

Maintenance Task Group

Singapore

March 14, 2011

Paul Congdon

Agenda

- Patents
- Process overview
- Request form review
- Web-site review
- Reports
- Initial list of maintenance items

Instructions for the WG Chair

The IEEE-SA strongly recommends that at each WG meeting the chair or a designee:

- Show slides #1 through #4 of this presentation
- Advise the WG attendees that:
 - The IEEE's patent policy is consistent with the ANSI patent policy and is described in Clause 6 of the *IEEE-SA Standards Board Bylaws*;
 - Early identification of patent claims which may be essential for the use of standards under development is strongly encouraged;
 - There may be Essential Patent Claims of which the IEEE is not aware. Additionally, neither the IEEE, the WG, nor the WG chair can ensure the accuracy or completeness of any assurance or whether any such assurance is, in fact, of a Patent Claim that is essential for the use of the standard under development.
- Instruct the WG Secretary to record in the minutes of the relevant WG meeting:
 - That the foregoing information was provided and that slides 1 through 4 (and this slide 0, if applicable) were shown;
 - That the chair or designee provided an opportunity for participants to identify patent claim(s)/patent application claim(s) and/or the holder of patent claim(s)/patent application claim(s) of which the participant is personally aware and that may be essential for the use of that standard
 - Any responses that were given, specifically the patent claim(s)/patent application claim(s) and/or the holder of the patent claim(s)/patent application claim(s) that were identified (if any) and by whom.
- The WG Chair shall ensure that a request is made to any identified holders of potential essential patent claim(s) to complete and submit a Letter of Assurance.
- It is recommended that the WG chair review the guidance in *IEEE-SA Standards Board Operations Manual* 6.3.5 and in FAQs 12 and 12a on inclusion of potential Essential Patent Claims by incorporation or by reference.

Note: WG includes Working Groups, Task Groups, and other standards-developing committees with a PAR approved by the IEEE-SA Standards Board.



25 March 2008

(Optional to be shown)

Participants, Patents, and Duty to Inform

All participants in this meeting have certain obligations under the IEEE-SA Patent Policy. Participants:

- “Shall inform the IEEE (or cause the IEEE to be informed)” of the identity of each “holder of any potential Essential Patent Claims of which they are personally aware” if the claims are owned or controlled by the participant or the entity the participant is from, employed by, or otherwise represents
 - “Personal awareness” means that the participant “is personally aware that the holder may have a potential Essential Patent Claim,” even if the participant is not personally aware of the specific patents or patent claims
- “Should inform the IEEE (or cause the IEEE to be informed)” of the identity of “any other holders of such potential Essential Patent Claims” (that is, third parties that are not affiliated with the participant, with the participant’s employer, or with anyone else that the participant is from or otherwise represents)
- The above does not apply if the patent claim is already the subject of an Accepted Letter of Assurance that applies to the proposed standard(s) under consideration by this group

Quoted text excerpted from IEEE-SA Standards Board Bylaws subclause 6.2

- Early identification of holders of potential Essential Patent Claims is strongly encouraged
- No duty to perform a patent search



Patent Related Links

All participants should be familiar with their obligations under the IEEE-SA Policies & Procedures for standards development.

Patent Policy is stated in these sources:

IEEE-SA Standards Boards Bylaws

<http://standards.ieee.org/guides/bylaws/sect6-7.html#6>

IEEE-SA Standards Board Operations Manual

<http://standards.ieee.org/guides/opman/sect6.html#6.3>

Material about the patent policy is available at

<http://standards.ieee.org/board/pat/pat-material.html>

If you have questions, contact the IEEE-SA Standards Board Patent Committee Administrator at patcom@ieee.org or visit <http://standards.ieee.org/board/pat/index.html>

This slide set is available at <http://standards.ieee.org/board/pat/pat-slideset.ppt>

Call for Potentially Essential Patents

- If anyone in this meeting is personally aware of the holder of any patent claims that are potentially essential to implementation of the proposed standard(s) under consideration by this group and that are not already the subject of an Accepted Letter of Assurance:
 - Either speak up now or
 - Provide the chair of this group with the identity of the holder(s) of any and all such claims as soon as possible or
 - Cause an LOA to be submitted

Other Guidelines for IEEE WG Meetings

- **All IEEE-SA standards meetings shall be conducted in compliance with all applicable laws, including antitrust and competition laws.**
 - **Don't discuss the interpretation, validity, or essentiality of patents/patent claims.**
 - **Don't discuss specific license rates, terms, or conditions.**
 - Relative costs, including licensing costs of essential patent claims, of different technical approaches may be discussed in standards development meetings.
 - Technical considerations remain primary focus
 - **Don't discuss or engage in the fixing of product prices, allocation of customers, or division of sales markets.**
 - **Don't discuss the status or substance of ongoing or threatened litigation.**
 - **Don't be silent if inappropriate topics are discussed ... do formally object.**

See *IEEE-SA Standards Board Operations Manual*, clause 5.3.10 and "Promoting Competition and Innovation: What You Need to Know about the IEEE Standards Association's Antitrust and Competition Policy" for more details.

Proposed Process

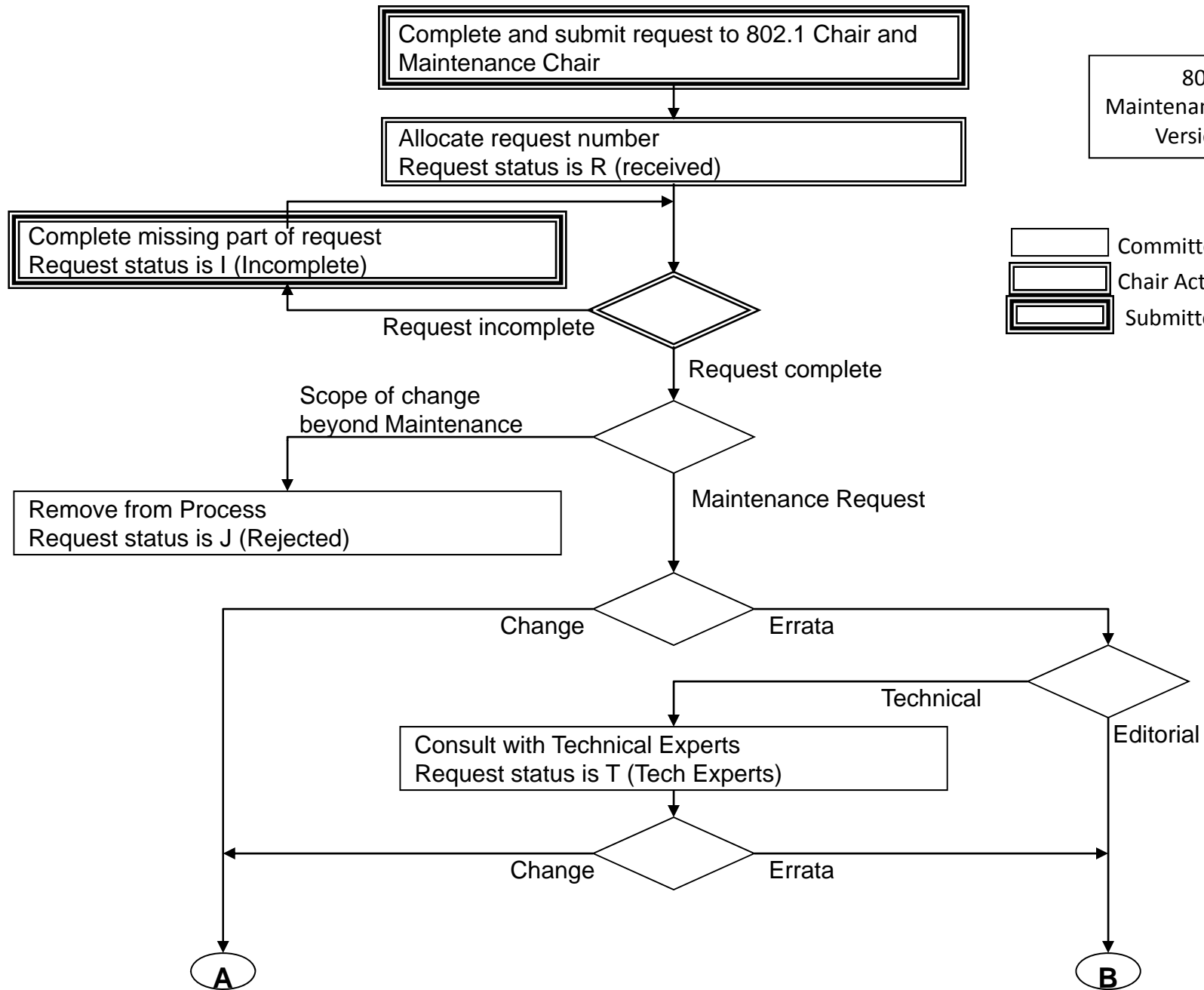
- Lifted from 802.3 – tools and methodology
- Thorough tracking of maintenance items from request to resolution
- Somewhat automated process of generating status information

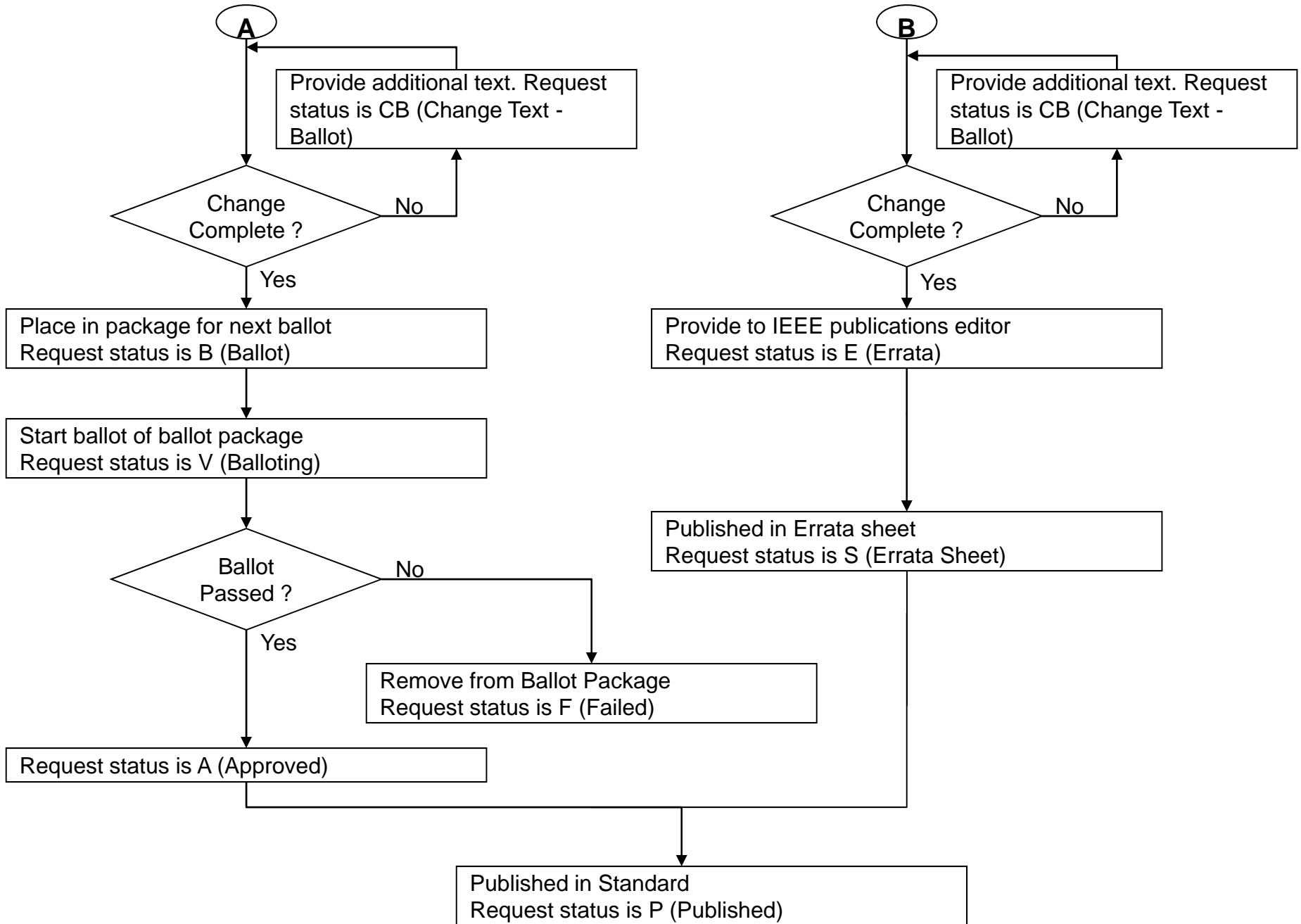
Review of 802.3 process

- Step 1 – Scope
 - Determine if in scope – not a new feature request
 - TG decisions are confirmed by WG
- Step 2 – Errata or Change
 - Errata in 802 are specific. Published text differs from approved text. Publish errata sheet
 - Changes needed are bugs to fix. Require WG ballot process.
 - TG determines priority for changes – Raise Corrigendum project or roll into next revision
- Step 3 – Complete Request
 - Assure change is well documented
 - Ready request for balloting process
- Step 4 – Ballot process of Change
 - Change requests are included in an official project
 - Normal ballot process

802.1
Maintenance process
Version 1.0

Committee Action
Chair Action
Submitter Action





S y m b o l	S t a t u s
A	A p p r o v e d i n b a l l o t
B	A w a i t i n g B a l l o t
C B	A w a i t i n g a d d i t i o n a l c h a n g e t e x t – B a l l o t
C E	A w a i t i n g a d d i t i o n a l c h a n g e t e x t – E r r a t a
E	E r r a t a , b a l l o t n o t r e q u i r e d
F	F a i l e d i n b a l l o t
I	I n c o m p l e t e
J	R e j e c t e d
P	P u b l i s h e d i n S t a n d a r d
R	R e q u e s t r e c e i v e d
S	P u b l i s h e d i n E r r a t a S h e e t
T	A w a i t i n g T e c h n i c a l e x p e r t s
V	B a l l o t i n g
W	W i t h d r a w n

S t a t u s I n f o r m a t i o n I n d e x

Submitting a Request

- Any WG member can submit a request
 - Note: The 802.3 submission form linked to password protected page
 - Generates email to maintenance mail reflector
- Maintenance TG works with submitter to vet request and track

Maintenance Request Form

- Similar to a ballot comment
- Text document linked off maintenance page
- Submitter emails to:
 - stds-802-1-maint-req@listserv.ieee.org
- Archive of submissions is at:
 - http://www.ieee802.org/1/private/email_mq/mail1.html
- Subscribe by sending to:
 - stds-802-1-maint-req-subscribe-request@listserv.ieee.org



maint-request.txt

Web-site updates

- <http://ieee802.org/1/maint.html>

Example Report

<u>Detailed Totals</u>	<u>Summary Totals</u>
<u>Detailed Totals</u>	<u>Summary Totals</u>
A = 1	Ready for ballot = 0
B = 0	Balloting = 0
CB = 0	Approved = 1
CE = 0	Awaiting clarification = 0
E = 0	Errata = 0
F = 0	To be categorised = 0
I = 0	Review by Technical experts = 0
J = 1	Withdrawn = 0
P = 2	Rejected = 1
R = 0	Published = 2
S = 0	
T = 0	Total = 4
V = 0	
W = 0	
Errors = 0	
Total = 4	Open = 1

Initial set of items

- Discussion