



Suggestion for L2 and L3 Streams

16-07-2013

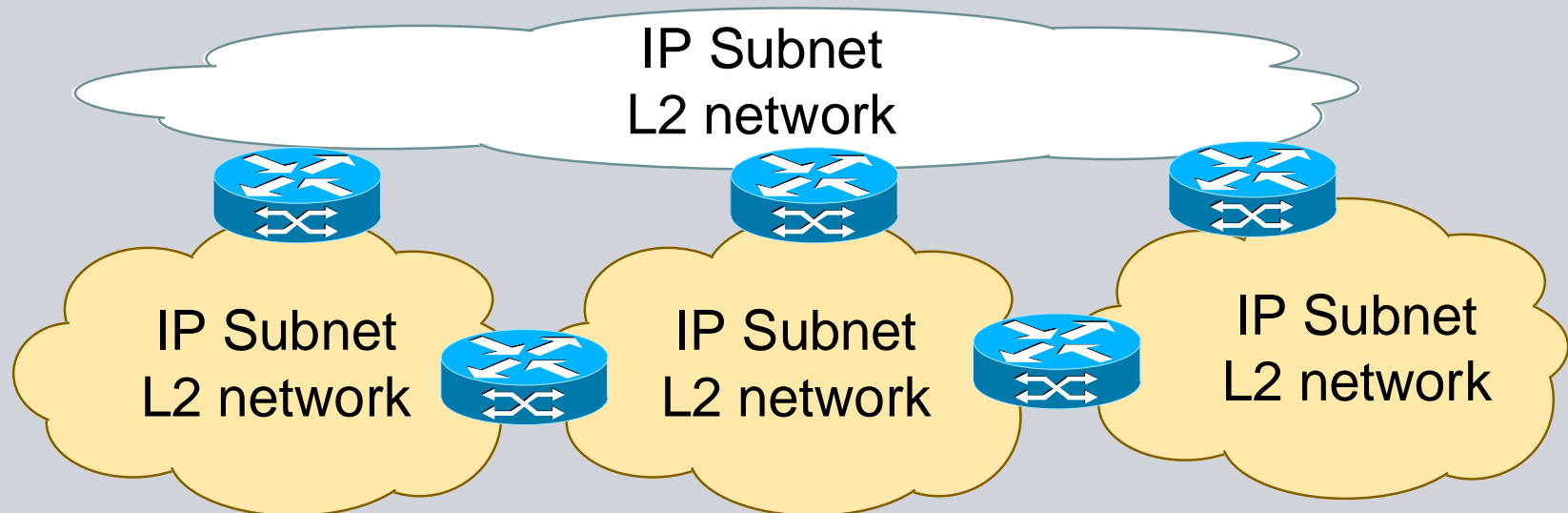
IEEE 802.3 Plenary Meeting – Geneva

Marcel Kießling, Siemens AG

IP Network

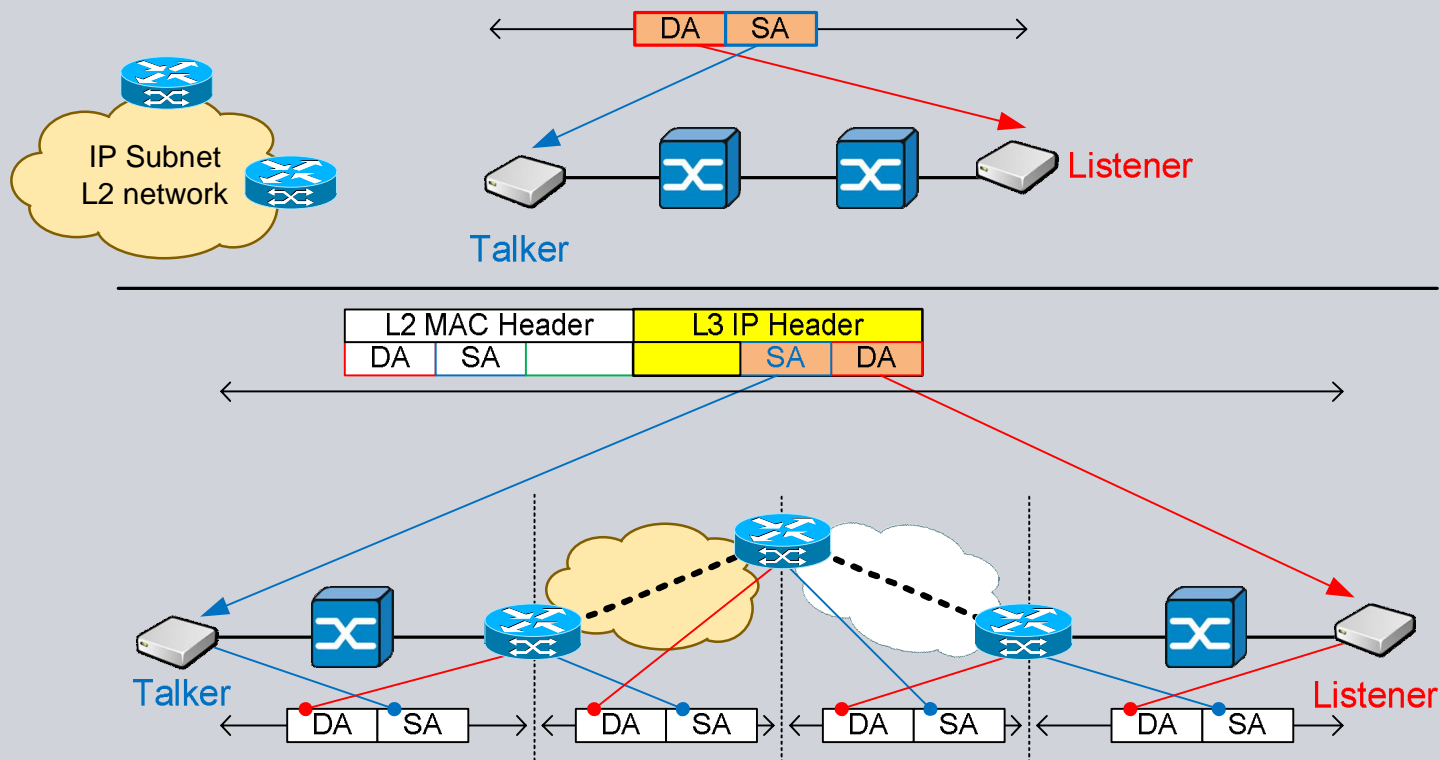
Connection between two IP Addresses

- IP Address in the same Subnet ?
 - YES: **L2 Forwarding** to the target
 - NO: **L2 Forwarding** to the **next router**



IP and Layer 2 in a network

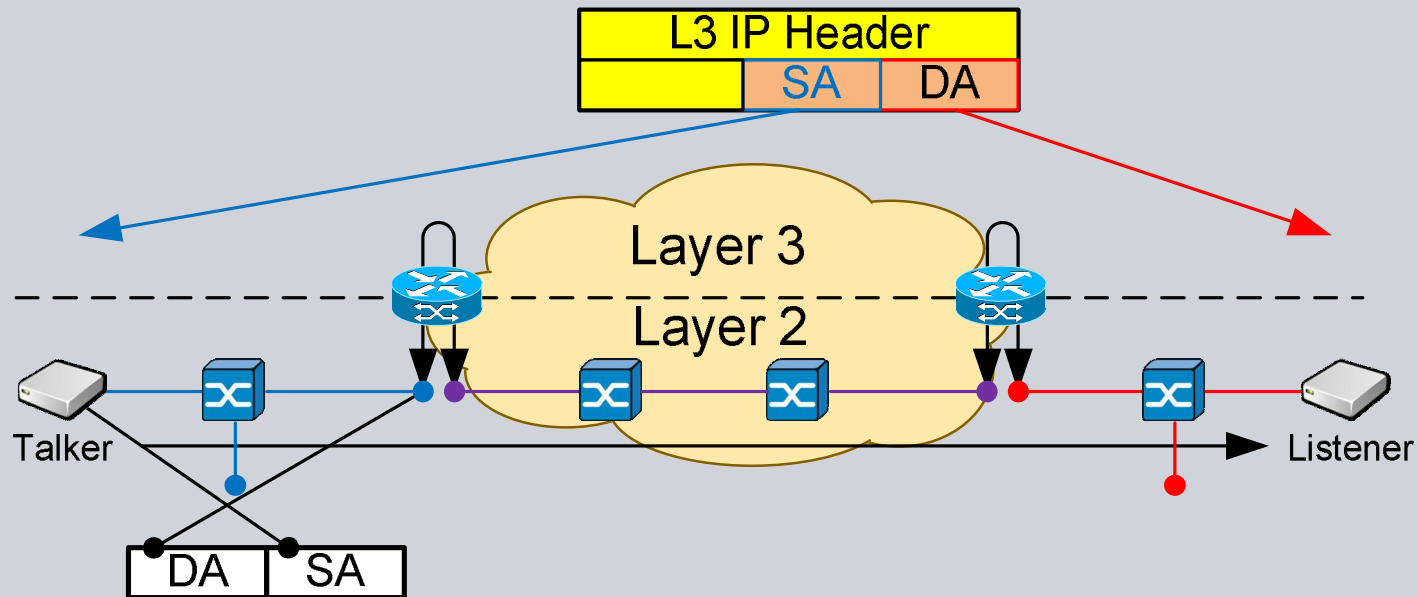
- DA **MAC** address is only valid inside a L2 network / IP Subnet



- DA **IP** address is fixed over whole connection
 - L2 Forwarding** to the **target** (Listener) or to the **next router** (closer to target-subnet)

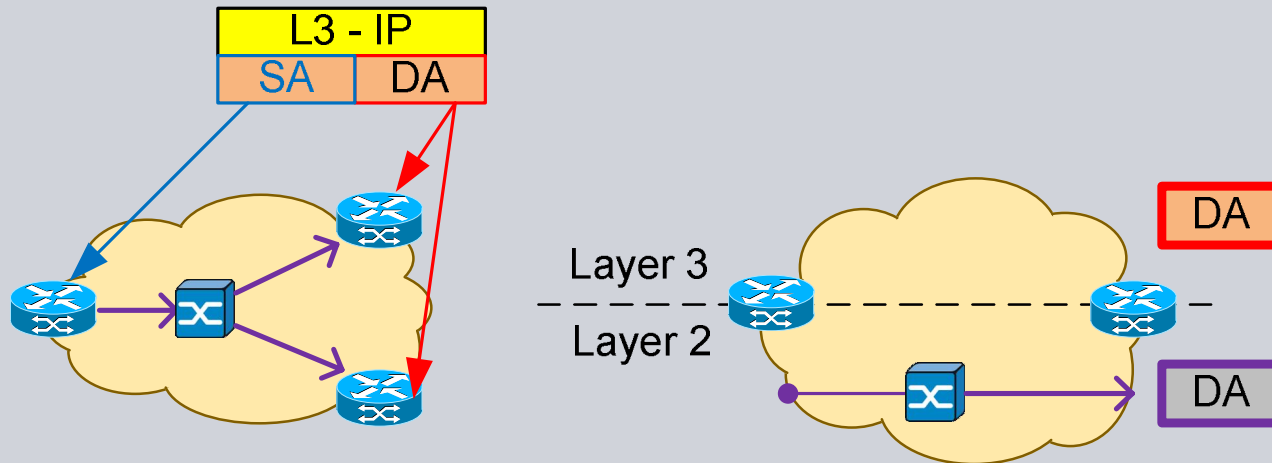
Mapping between L2 and L3

- Mapping of L3 Routes on L2 Paths
- Connection between L2 domains using L3 “forwarding” in router

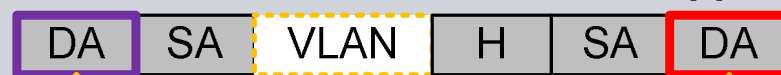


IP Multicast maps to L2 Multicast

- Mapping of L3 Routes to L2 Paths needed
- Connection between L2 domains using L3 in router



Multicast IP – L2 MAC Address Mapping



01-00-5E- + DA

Additional Information

Layer 2 and Layer 3 uses the same HW:

▪ <http://www.ieee802.org/1/files/public/docs2013/new-QoS-nfinn-L2-L3-cooperation-0113-v01.pdf>