



IEEE 802 Overview

www.ieee802.org



Contents

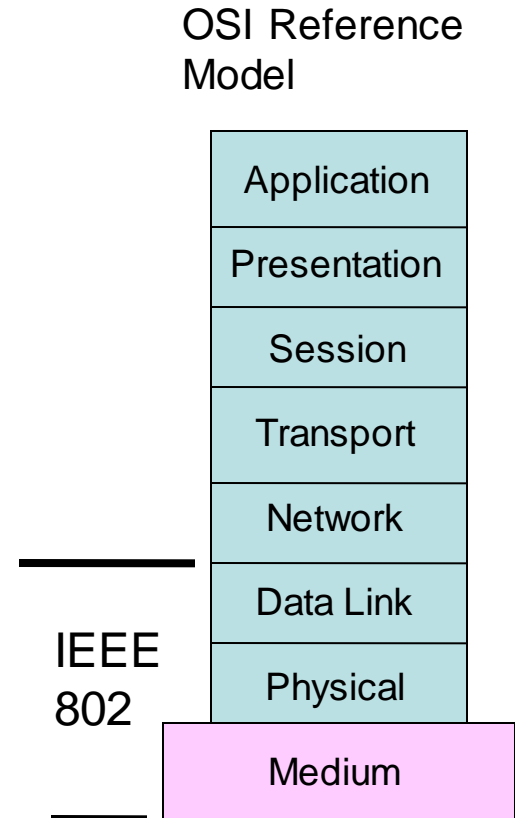
- Introduction to IEEE 802
- Introduction to IEEE standards process
- Getting more information



Introduction to IEEE 802

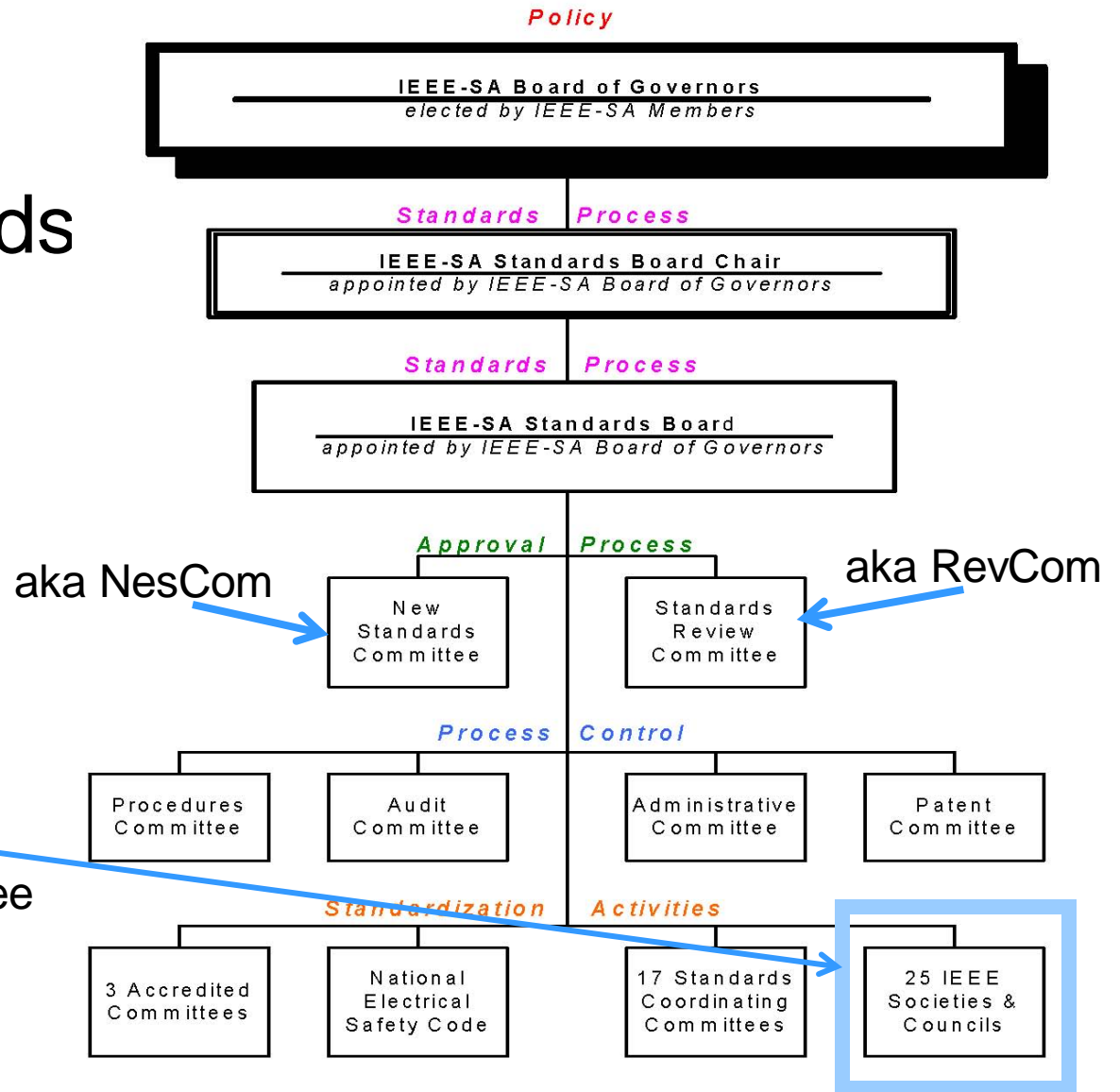
Who we are

- IEEE Project 802 LAN/MAN Standards Committee (aka IEEE 802 or LMSC)
 - Develop LAN and MAN standards
 - Mainly for link and physical layers of the network stack
 - In operation since March 1980





IEEE Standards Organization



IEEE 802 is here:
a standards committee
formed by the
Computer Society

Some terms

- PAR – Project Authorization Request – the document that authorizes work on a project.
- CSD – Criteria for Standards Development – the basis for determining whether to forward a PAR.
- WG - Working Group – responsible for developing standards in an area
- TAG – Technical Advisory Group – experts on a topic area that crosses working groups – may develop a recommended practice.
- Task Group or task force – a part of a working group which focuses on a particular project.



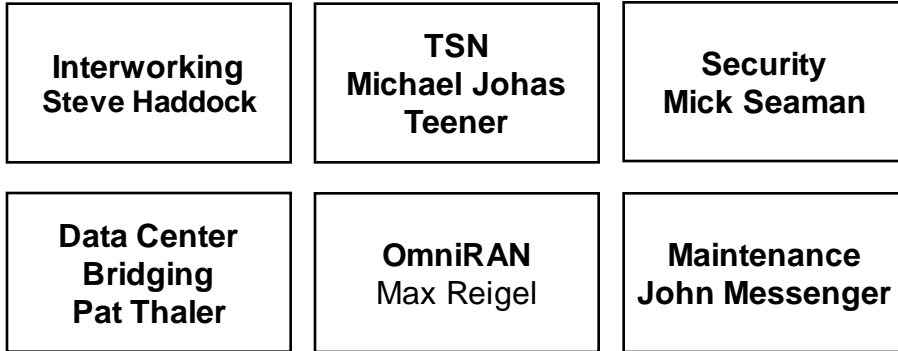
All those dots....decoder ring

- 802.1 Bridging and Architecture – generally the top of the link layer
- 802.3 Ethernet
- 802.11 Wireless LAN (WLAN)
- 802.15 Wireless Personal Area Network (WPAN)
- 802.16 Broadband Wireless Access (BWA)
- 802.18 Radio Regulatory TAG
- 802.19 Coexistence
- 802.21 Media Independent Handover
- 802.22 Wireless Regional Area Networks (WRAN)
- 802.24 Smart Grid TAG



IEEE 802.1 Organization

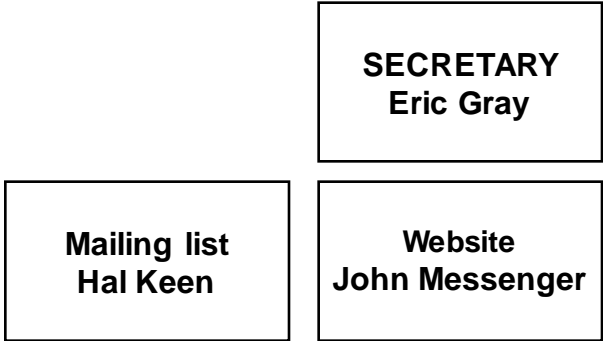
Task Group Chairs



CHAIR
Glenn Parsons

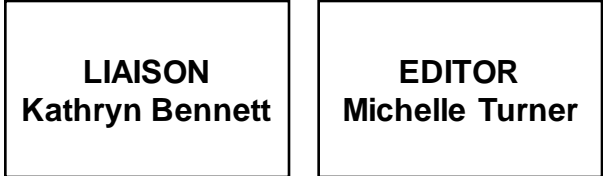
VICE CHAIR
John
Messenger

Appointed Officers



IEEE-SA staff

(non voting)



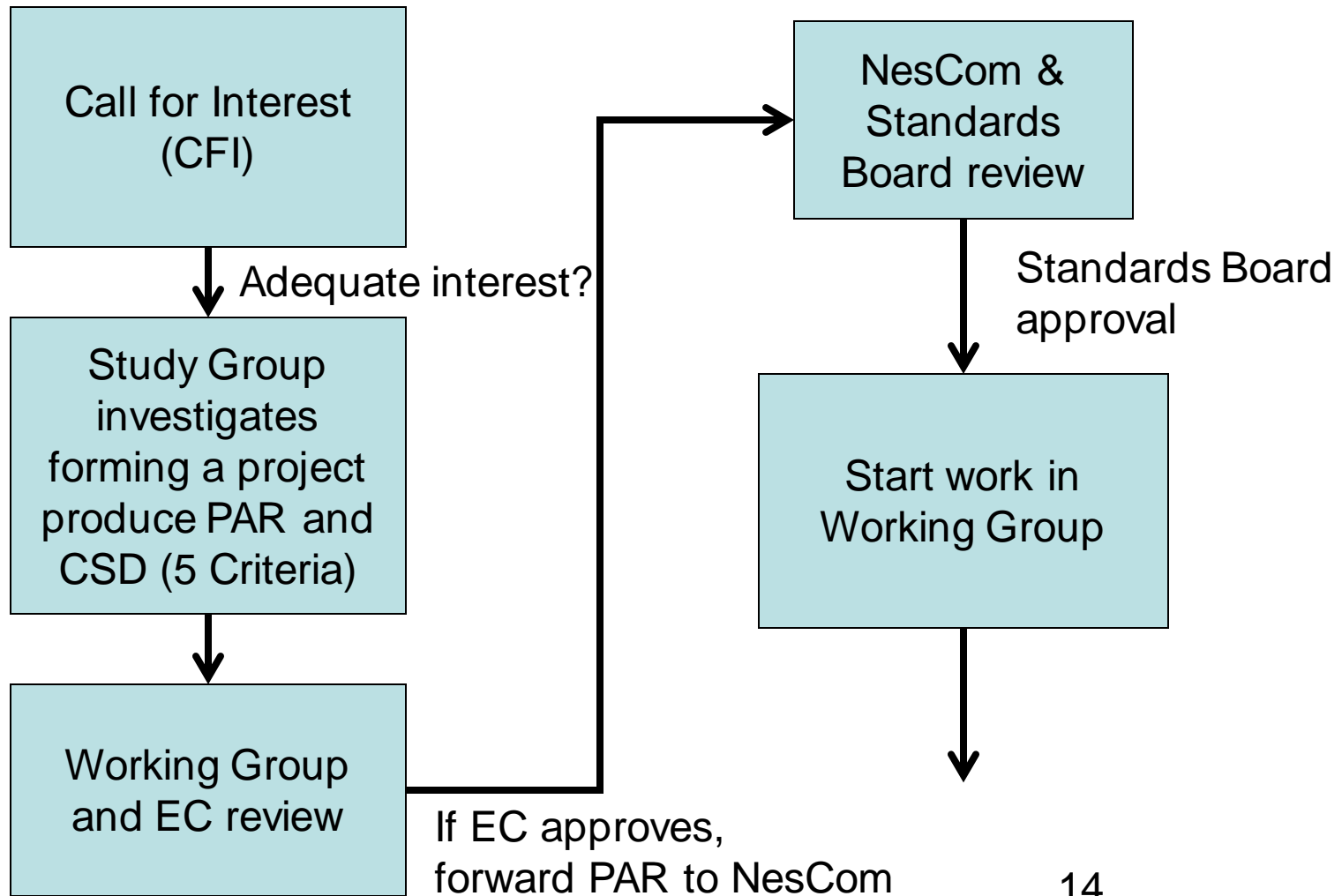


Introduction to IEEE standards process

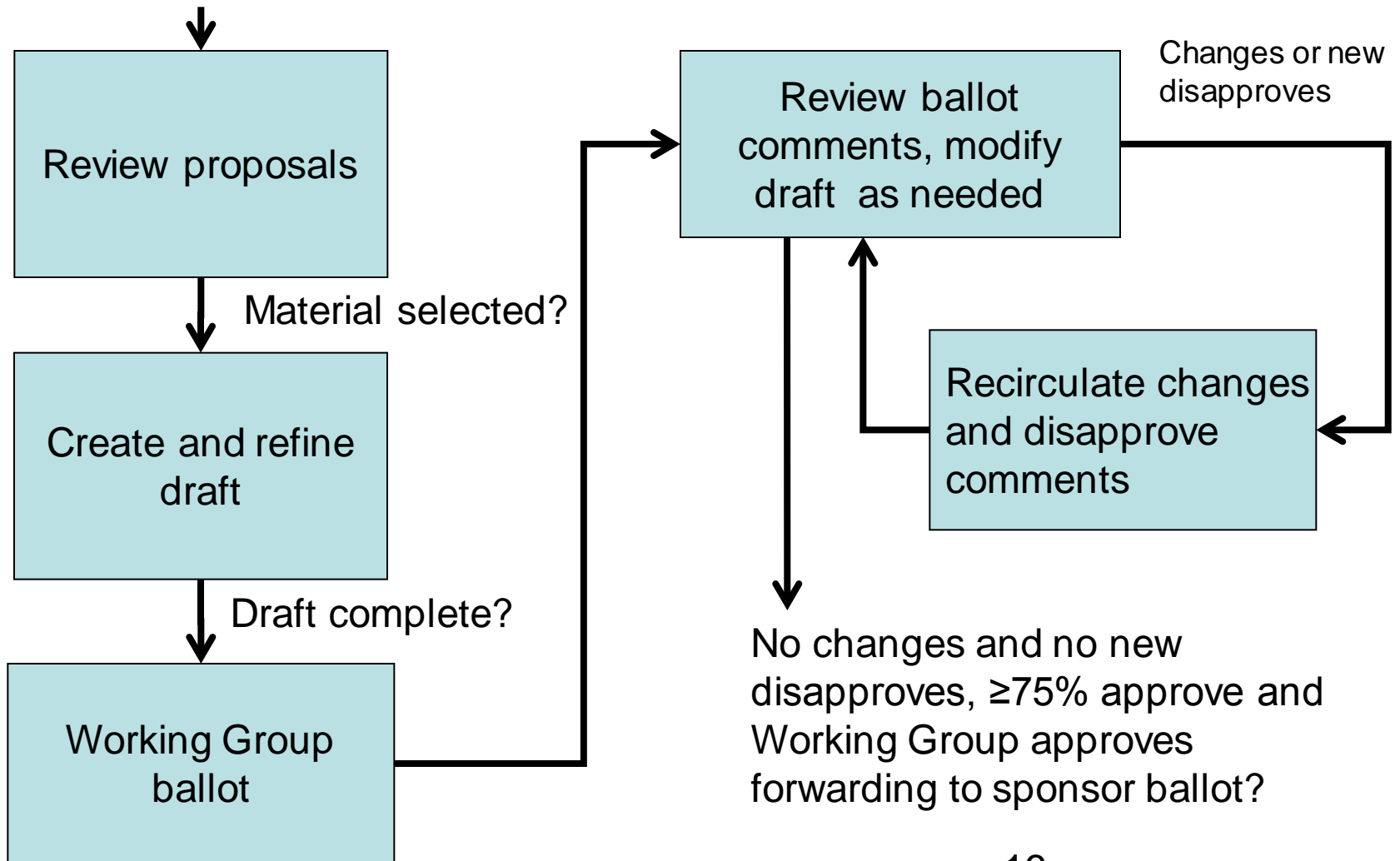
Principles of the process

- **Due process** – procedures are publicly available and followed consistently
- **Consensus** – requiring agreement of a majority or supermajority – for technical decisions here $\geq 75\%$
- **Openness** – ensuring materially interested and affected parties can participate
- **Balance** – representation from all interested parties without overwhelming influence from any one party
- **Right of appeal** – process to ensure due process

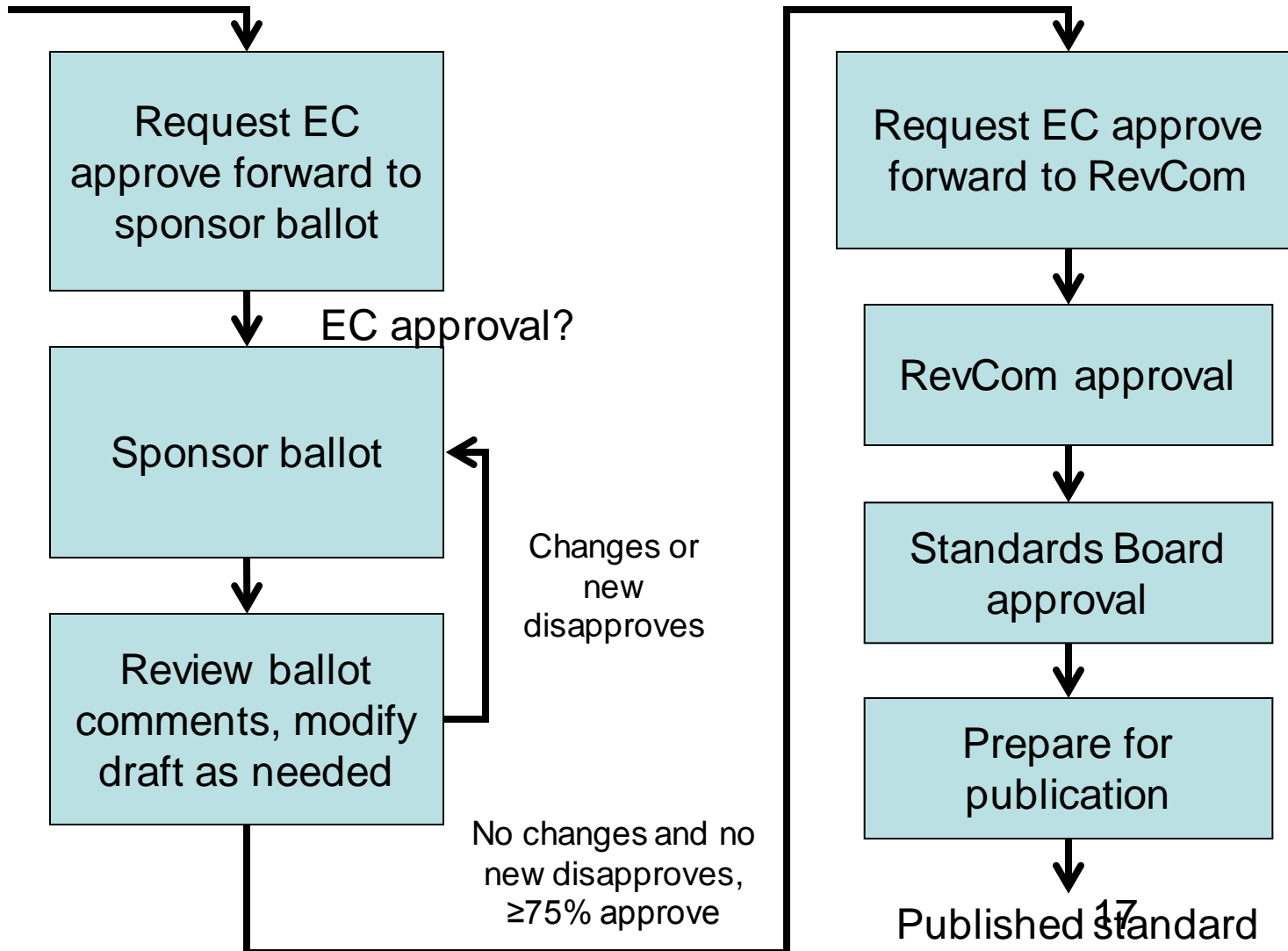
IEEE 802 standards development life cycle – part 1



IEEE 802 standards development life cycle – part 2



IEEE 802 standards development life cycle – part 3



Voting and membership

- Voters have responsibility to vote on letter ballots
- Three levels of voting occur in IEEE 802 standards development:
 - Sponsor ballot
 - Open to all interested parties
 - Via IEEE SA-membership or paying a per ballot fee
 - Participation requires an IEEE WebAccount
 - Working group
 - Requirements on next page
 - Task force or task group
 - Requirements vary – consult Working group.

Acquiring Working Group voting membership

- Participating at a meeting = at least 75% presence.
- For a new Working Group, persons participating in the initial meeting become members.
- For an existing Working Group, after attending 2 of last 4 plenary sessions or 1 plenary and 1 interim, membership starts at the next plenary attended.
 - In 802.1, a letter of intent to the chair is required.

Ways of Collaborating

- Join the 802.1 [mailing list](#)
 - Discussion and announcements
- Participation at 802.1 meetings
 - 802.1 meets 6 times per year for a week
- Participation on conference calls
 - Biweekly conference calls are expected
- Exchange of liaisons
 - As necessary
 - Formal indication of positions, drafts, and milestones



Getting more information



Resources

- IEEE 802 home page:
 - <http://www.ieee802.org>
- IEEE 802 chairs, etc.
 - <http://www.ieee802.org/wgchairs.shtml>
- IEEE 802.1 WG home page:
 - <http://www.ieee802.org/1>
- Links to IEEE and IEEE 802 procedural documents:
 - <http://www.ieee802.org/devdocs.shtml>
- Links to IEEE 802 orientation
 - <http://ieee802.org/orientation.shtml>