

| | | |
|------------------------------|---|---|
| Project | IEEE 802.16 Broadband Wireless Access Working Group < http://ieee802.org/16 > | |
| Title | Solution upon the AIs in 46 meeting. | |
| Date Submitted | 2007-01-04 | |
| Source(s) | Wu Xuyong, Huawei David Grandblaise , Motorola Kenneth Stanwood , Nextwav | Voice: +86-755-28972327 Fax: wuxuyong@huawei.com , david.grandblaise@motorola.com KStanwood@cygnuscom.com |
| Re: | 80216h-06_028 : Title: TGh Report closing plenary- Meeting 46 (2006-11-17) | |
| Abstract | Feedback on the AI summarization C80216h-06_123.xls | |
| Purpose | To consolidate the 16h draft. | |
| Notice | This document has been prepared to assist IEEE 802.16. It is offered as a basis for discussion and is not binding on the contributing individual(s) or organization(s). The material in this document is subject to change in form and content after further study. The contributor(s) reserve(s) the right to add, amend or withdraw material contained herein. | |
| Release | The contributor grants a free, irrevocable license to the IEEE to incorporate material contained in this contribution, and any modifications thereof, in the creation of an IEEE Standards publication; to copyright in the IEEE's name any IEEE Standards publication even though it may include portions of this contribution; and at the IEEE's sole discretion to permit others to reproduce in whole or in part the resulting IEEE Standards publication. The contributor also acknowledges and accepts that this contribution may be made public by IEEE 802.16. | |
| Patent Policy and Procedures | The contributor is familiar with the IEEE 802.16 Patent Policy and Procedures < http://ieee802.org/16/ipr/patents/policy.html >, including the statement "IEEE standards may include the known use of patent(s), including patent applications, provided the IEEE receives assurance from the patent holder or applicant with respect to patents essential for compliance with both mandatory and optional portions of the standard." Early disclosure to the Working Group of patent information that might be relevant to the standard is essential to reduce the possibility for delays in the development process and increase the likelihood that the draft publication will be approved for publication. Please notify the Chair < mailto:chair@wirelessman.org > as early as possible, in written or electronic form, if patented technology (or technology under patent application) might be incorporated into a draft standard being developed within the IEEE 802.16 Working Group. The Chair will disclose this notification via the IEEE 802.16 web site < http://ieee802.org/16/ipr/patents/notices >. | |

Solution upon the AIs in 46 meeting.

Wu Xuyong Huawei

David Grandblaise , Motorola

Kenneth Stanwood , Nextwav

Overview

According to IEEE C802.16-06/123: Action Items from Session #46 (Mariana Goldhamer; 2006-11-17)

I list some comment to be solved in the action items, some did have resolved and have consensus during the discussion. This contribution will propose some remedy to cover the comment which have got some consensus, the rest comment is to be solved later on in other contribution.

| AI | comment | Situation | By | Concern |
|--|---------|--------------------------|--------|--|
| up-date the figure | 211 | confirmed | Xuyong | figure h11 is confirmed by mariana |
| Ad-Hoc rationalize and improve the existing flowcharts | 214 | wait for resolution | Xuyong | Provide the flow charts and text for: CX operating flow for BS CX initializing flow for SS CX operating flow for SS |
| | 221 | confirmed | David | no relation with CSI or CMI |
| | 222 | confirmed | David | "Perform UCP" should be enough, (Paul have some other concern on the whole flowchart.) |
| | 223 | confirmed | Ken | Change "interference free slot" to "CSI or CMI" as Ken's suggestion. |
| | 227 | wait for confirmation | David | Should have been covered by 114r2 |
| | 230 | wait for resolution | Ken | "temporary community entry" status and "the final status" should be clarified |
| | 231 | confirmed | David | change "synchronous channel switching maybe executed" to: "channel distribution may be reallocated"(actually no synchronous channel switching needed, this expression is out of date somehow) |
| | 232 | confirmed | Ken | same as 231, (we should still work on the text more next time around.) |
| | 235 | wait for resolution | Ken | related to 214 and Shulan's adhoc |
| | 240 | wait for | Ken | related to 214 and Shulan's adhoc |

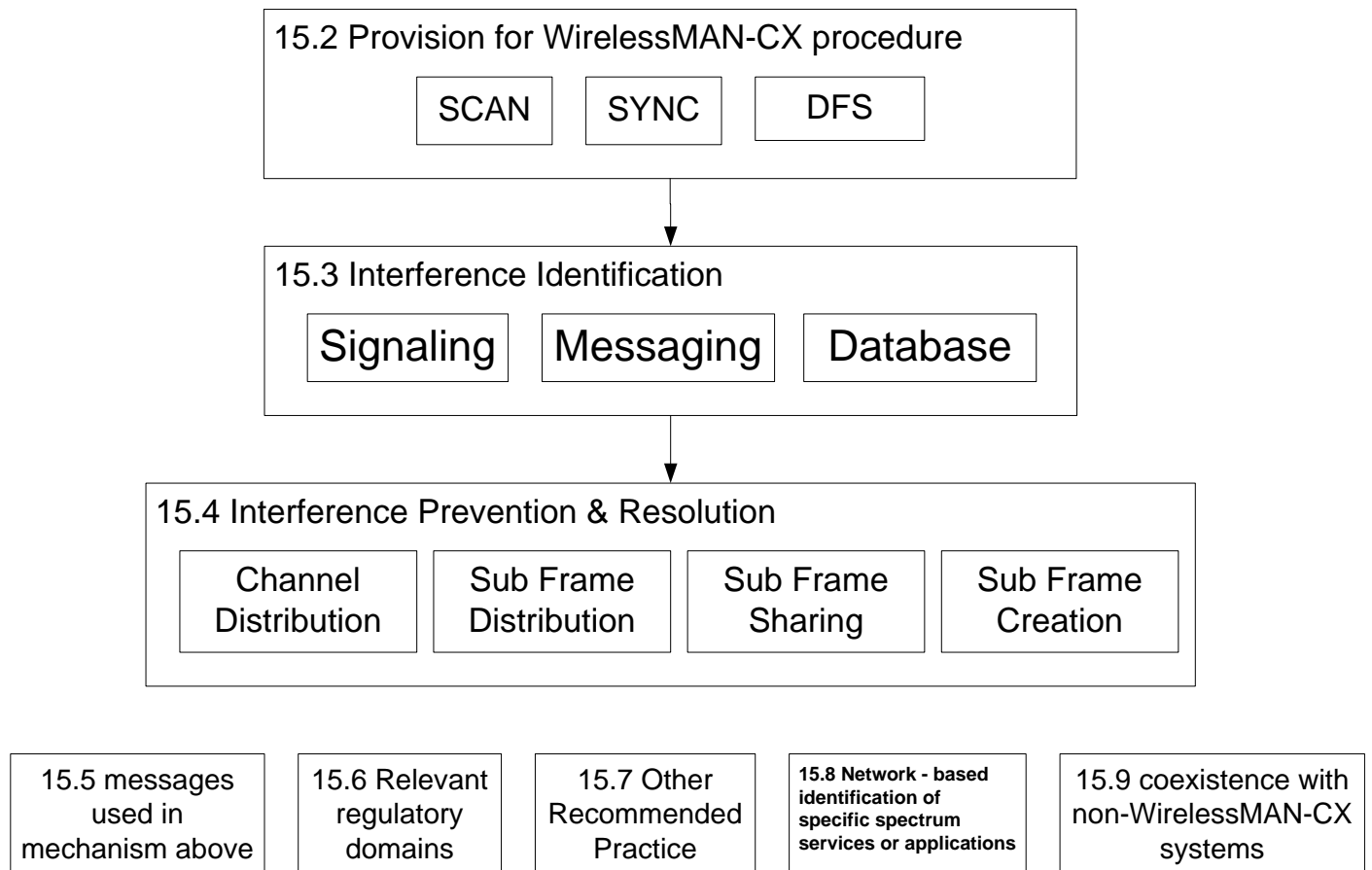
| | | | | |
|---|-----|---------------------------|--------|---|
| | | resolution | | |
| | 241 | wait for resolution | Ken | related to 214 and Shulan's adhoc |
| | 247 | wait for clarification | Ken | should be within A117 "Detailed description and consolidated text of the CXCC and CMI" |
| | 544 | waiting for clarification | Xuyong | |
| fix the issue of active/passive scanning | 220 | confirmed | David | Scan here is just an action taken on the each channel one by one. The basic distinction between passive scan and active scan is the specific action in scanning. Passive scan means measure or listen to the potential channel one by one, without any transmission. While Active scan leads to signal transmission on each potential channel, and wait for the feedback. |
| define ALL of CSI parameters | 253 | confirmed | David | Should have been covered by 112r3 |
| | 258 | confirmed | Ken | "ICSI cycle counted in CSI intervals" according to Ken's comment's suggestion. |
| | 259 | confirmed | Ken | "Number of ICSI cycles between OCSI recurrence of the same system" |
| | 261 | confirmed | David | 113r1 had explained some of the difference between the number of subframes and the number of systems in a neighborhood. |
| | 263 | confirmed | Ken | add one sentence after the first in 15.1.4.1.1, "The timing of each system within the neighborhood shall be synchronized, by using an unique time reference in the same region such as GPS or the equivalence, or by using synchronization mechanism in adhoc manner such as CXCC." |
| Al Shawn: provide the figures with both UL and DL | 270 | confirmed | Ken | see in the temporary visio file |
| Fix the ACS process - (Mariana, Shawn, John, Liwen) through the | 196 | wait for resolution | Ken | |

| | | | | |
|---|-----|---------------------------|---------|--|
| document - target: only 4 flowcharts | | | | |
| | 223 | confirmed | Ken | change "interference free slot" to "CSI or CMI" as Ken's suggestion. |
| | 544 | waiting for clarification | Xuyong | |
| revise 6.4 and fix the table h3 | 99 | wait for resolution | Avi | discussed in Paul's ad-hoc and email thread |
| | 101 | wait for resolution | David | discussed in Paul's ad-hoc and email thread |
| | 206 | wait for resolution | David | discussed in Paul's ad-hoc and email thread |
| | 207 | wait for resolution | David | discussed in Paul's ad-hoc and email thread |
| | 208 | wait for resolution | Richard | discussed in Paul's ad-hoc and email thread |
| | 255 | wait for resolution | David | discussed in Paul's ad-hoc and email thread |

Reference:

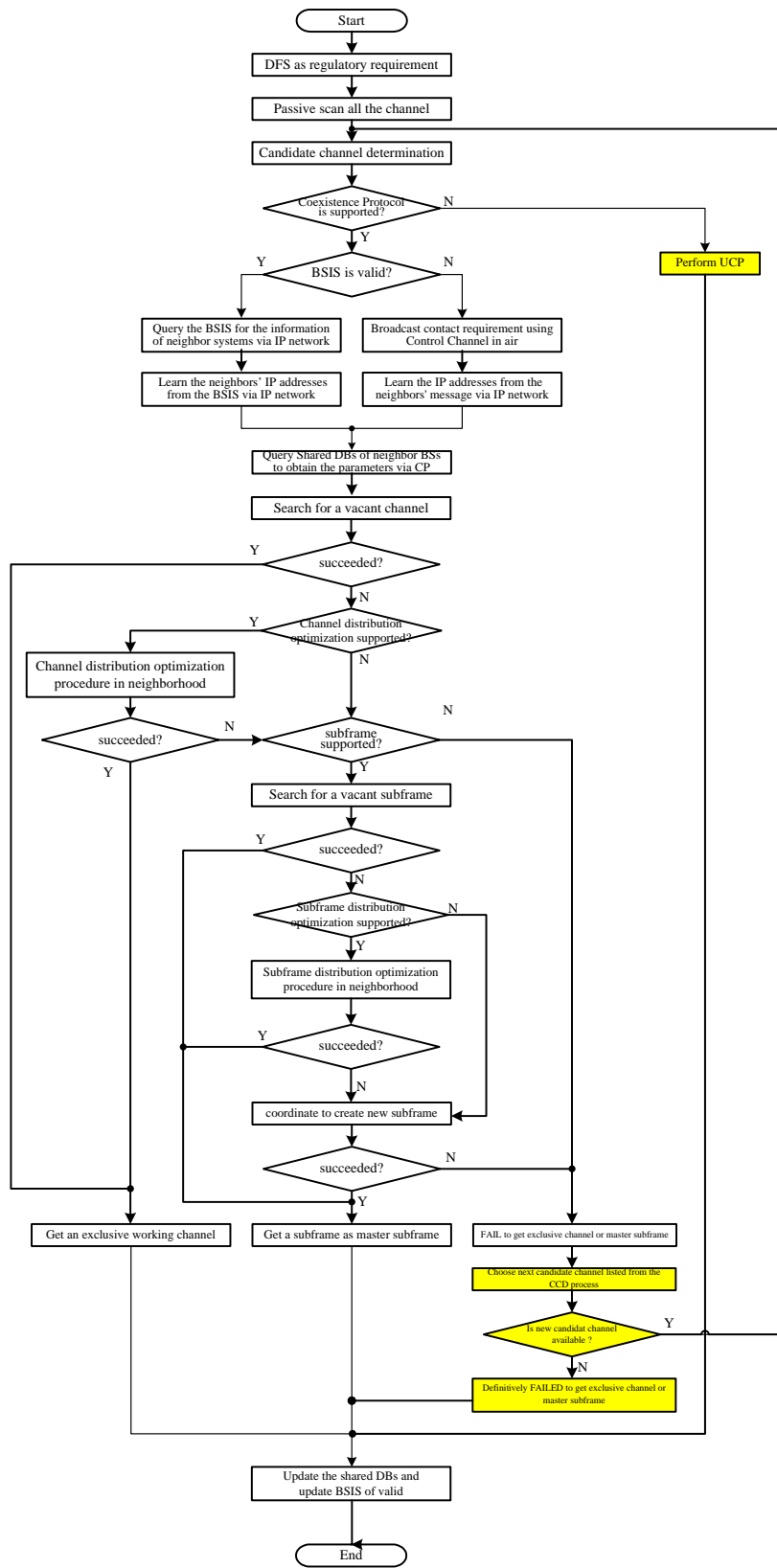
- [1] *IEEE 802.16-06/068r2: comment database of IEEE 802.16 LB24 (2006-11-17)*
- [2] *IEEE P802.16h/D1: Working Document for P802.16h (2006-08-01)*
- [3] *80216h-06_059 : IEEE 802.16 Working Group Working Group Letter Ballot #24 (2006-10-11)*
- [4] *IEEE 802.16-2004: IEEE Standard for Local and metropolitan area networks Part 16: Air Interface for Fixed Broadband Wireless Access Systems (2004-10-01)*
- [5] *IEEE 802.16e-2005: IEEE Standard for Local and metropolitan area networks Part 16: Air Interface for Fixed and Mobile Broadband Wireless Access Systems Amendment 2: Physical and Medium Access Control Layers for Combined Fixed and Mobile Operation in Licensed Bands and Corrigendum 1 (2006-02-28)*
- [6] *IEEE C802.16-06/123: Action Items from Session #46 (Mariana Goldhamer; 2006-11-17)*

Proposed Changes accordingly: (comment with consensus only)***Comment 211 resolutions:******Change figure h11 as indicate:***



Comment 222 resolutions, by David (not having consensus yet):

Change figure h12 as indicate:



Comment223:

Change 15.1.3.1 page 45 line 19 as indicate:

A new BS uses the ~~interference-free slot CSI or CMI~~ to broadcast the message containing the contact request and/or the cognitive radio signal transmitting the IP address

Comment231:

Change 15.1.3.1 page 46 line 15 as indicate:

If the LE BS finds that there is no "free" channel at that moment, ~~synchronous channel switching maybe executed~~ channel distribution may be reallocated, or the coexistence neighbor topology provides the guidelines of with whom it should negotiate to share the channel.

Comment220:

Change 15.1.3.1 page 43 line 62 as indicate:

Figure h12 shows the initialization procedures for the WirelessMAN-CX BSs. Note, that the procedures that the BS used to create a Master slot or channel switching are also applicable for the operating stage. The detailed negotiation and update procedures are described in section 15.5.2 and 15.4.1.2. Scan here is just an action taken on the each channel one by one. The basic distinction between passive scan and active scan is the specific action in scanning. Passive scan means measure or listen to the potential channel one by one, without any transmission. While Active scan leads to signal transmission on each potential channel, and wait for the feedback.

Comment258/259:

Change 15.1.4.1.1 page 48 line 33 as indicate:

And parameter deal with the ICSI and OCSI cycle (see 15.3.1.1.1):

N_{ICSI_Cycle} : ICSI cycle counted in CSI ~~eyeles~~ intervals

N_{OCSI_Cycle} : ~~OCSI cycle counted in ICSI cycles~~ Number of ICSI cycles between OCSI recurrences of the same system

Comment 263:

Add one sentence after the first in 15.1.4.1.1,

The timing of each system within the neighborhood shall be synchronized, by using an unique time reference in the same region such as GPS or the equivalence, or by using synchronization mechanism in adhoc manner such as CXCC.

Comment 270:

Replace figure h19 as indicate:

