

UCP simulation: Approach and Initial Results

IEEE 802.16 Presentation Submission Template (Rev. 8.3)

Document Number:

IEEE C802.16h-07/019

Date Submitted:

2007-01-15

Source:

**Paul Piggin
NextWave Broadband Inc.
12670 High Bluff Drive
San Diego CA 92130 USA**

Voice: **1 858 480 3100**
Fax: **1 858 480 3105**
E-mail: **[ppiggin @ nextwave.com](mailto:ppiggin@nextwave.com)**

Venue:

Session #47

Base Document:

Purpose:

Notice:

This document has been prepared to assist IEEE 802.16. It is offered as a basis for discussion and is not binding on the contributing individual(s) or organization(s). The material in this document is subject to change in form and content after further study. The contributor(s) reserve(s) the right to add, amend or withdraw material contained herein.

Release:

The contributor grants a free, irrevocable license to the IEEE to incorporate material contained in this contribution, and any modifications thereof, in the creation of an IEEE Standards publication; to copyright in the IEEE's name any IEEE Standards publication even though it may include portions of this contribution; and at the IEEE's sole discretion to permit others to reproduce in whole or in part the resulting IEEE Standards publication. The contributor also acknowledges and accepts that this contribution may be made public by IEEE 802.16.

IEEE 802.16 Patent Policy:

The contributor is familiar with the IEEE 802.16 Patent Policy and Procedures <<http://ieee802.org/16/ipr/patents/policy.html>>, including the statement "IEEE standards may include the known use of patent(s), including patent applications, provided the IEEE receives assurance from the patent holder or applicant with respect to patents essential for compliance with both mandatory and optional portions of the standard." Early disclosure to the Working Group of patent information that might be relevant to the standard is essential to reduce the possibility for delays in the development process and increase the likelihood that the draft publication will be approved for publication. Please notify the Chair <<mailto:chair@wirelessman.org>> as early as possible, in written or electronic form, if patented technology (or technology under patent application) might be incorporated into a draft standard being developed within the IEEE 802.16 Working Group. The Chair will disclose this notification via the IEEE 802.16 web site <<http://ieee802.org/16/ipr/patents/notices>>.

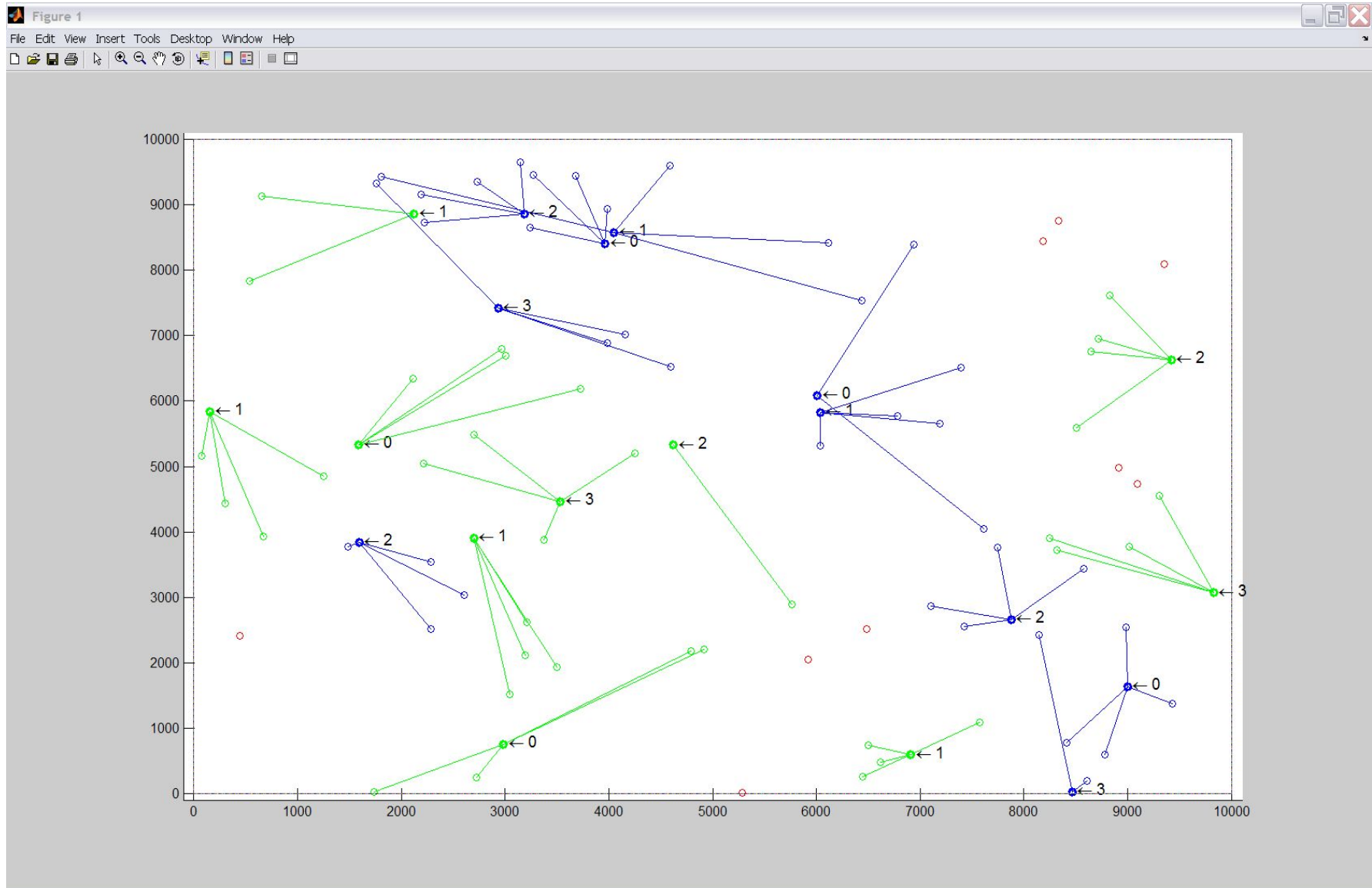
UCP simulation: Approach and Initial Results

Paul Piggin
NextWave Broadband

Presentation Overview

- Present a simulation environment for proof of concept of UCP (Uncoordinated Coexistence Protocol) – sub clause 6.4.2.4 in P802.16h/D1
- Considering 3.65GHz, looking to demonstrate coexistence with 802.11y and supporting a solution based on UCP
- Simulation overview:
 - Equipment
 - Environment
- LBT and EQP/aEQP features and simulation results
- Further work

Definition of the *Simulation Space*



High-level simulation model

- Current traffic model – full buffer
- 802.16h initial assumptions for equipment are similar to *WiMAX Forum Release 1* certification parameters
- 802.11 model (under development) but based on 802.11a 5GHz OFDM with some modifications defined by 802.11 TGy
- Simulation 1-10secs averaged n times to generate a data point in the results that follow

Simulation assumptions: Equipment I

- 5ms frames
- 47 symbols per frame
 - 26 in the downlink (1 for preamble)
 - 21 in the uplink
- 102 μ s symbol duration
- RTG=60 μ s, SSTTG=SSRTG=50 μ s (WiMAX Forum parameters), TTG >50 μ s

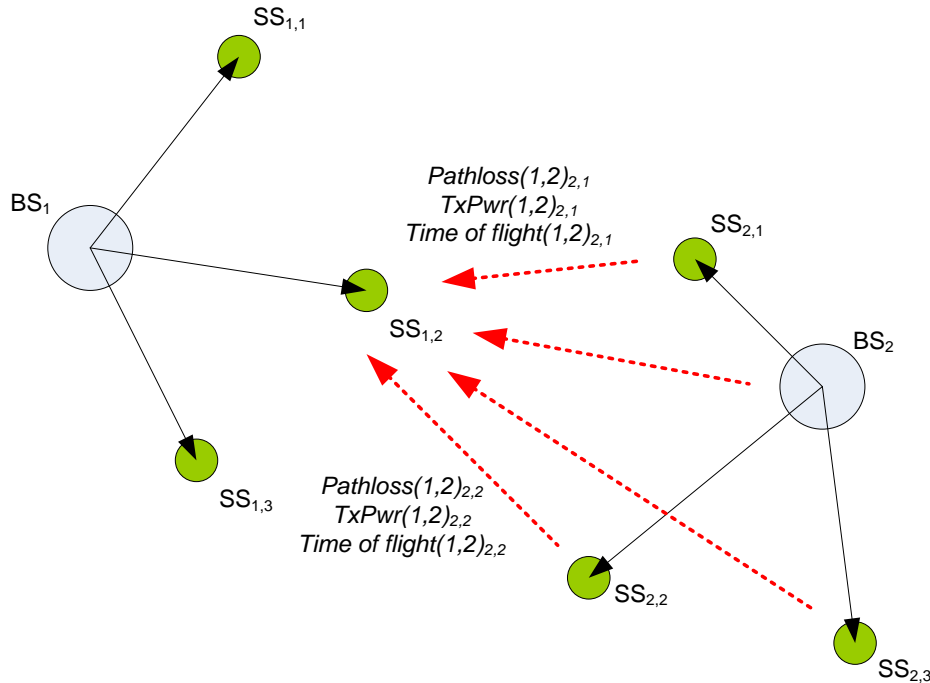
Simulation assumptions: Equipment II

- 0 dBi antenna BS and MS (omni)
- 10MHz channels (5 channels in the simulation)
- 3 modulation schemes supported:
 - CTC QPSK $\frac{3}{4}$ (sensitivity -85.1dBm, Pwr = 20dBm)
 - CTC 16QAM $\frac{1}{2}$ (sensitivity -82.8dBm , Pwr = 17dBm)
 - CTC 16QAM $\frac{3}{4}$ (sensitivity -78.7dBm, , Pwr = 17dBm)
 - (NB AWGN from WiMAX Forum RCT v1.0.0)
- Noise Figure = 6dB (BS & SS)
- Adjacent channel rejection (all modulation schemes):
 - $n \pm 1 = 10\text{dB}$
 - $n \pm 2 = 30\text{dB}$
 - $> n \pm 2 = 40\text{dB}$

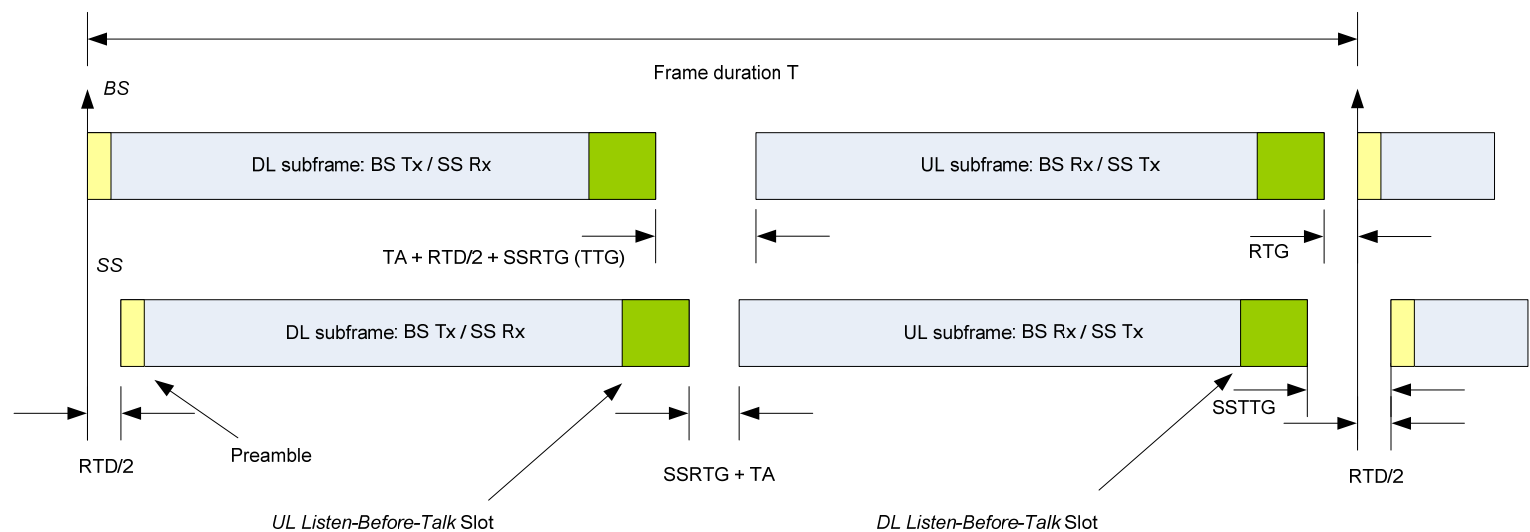
Simulation assumptions: Environment

- 1km square simulation area
- Free space path loss model ($n=2$)
- No height variation in devices
- Specify x 802.16h BS and y 802.11y APs
- Up to z SS/STA associated with each BS/AP, respectively
- UCP:
 - DCS (undertaken once at the beginning of the simulation to distribute frequency allocation)
 - EQP/aEQP
 - LBT

Interference geometry calculation

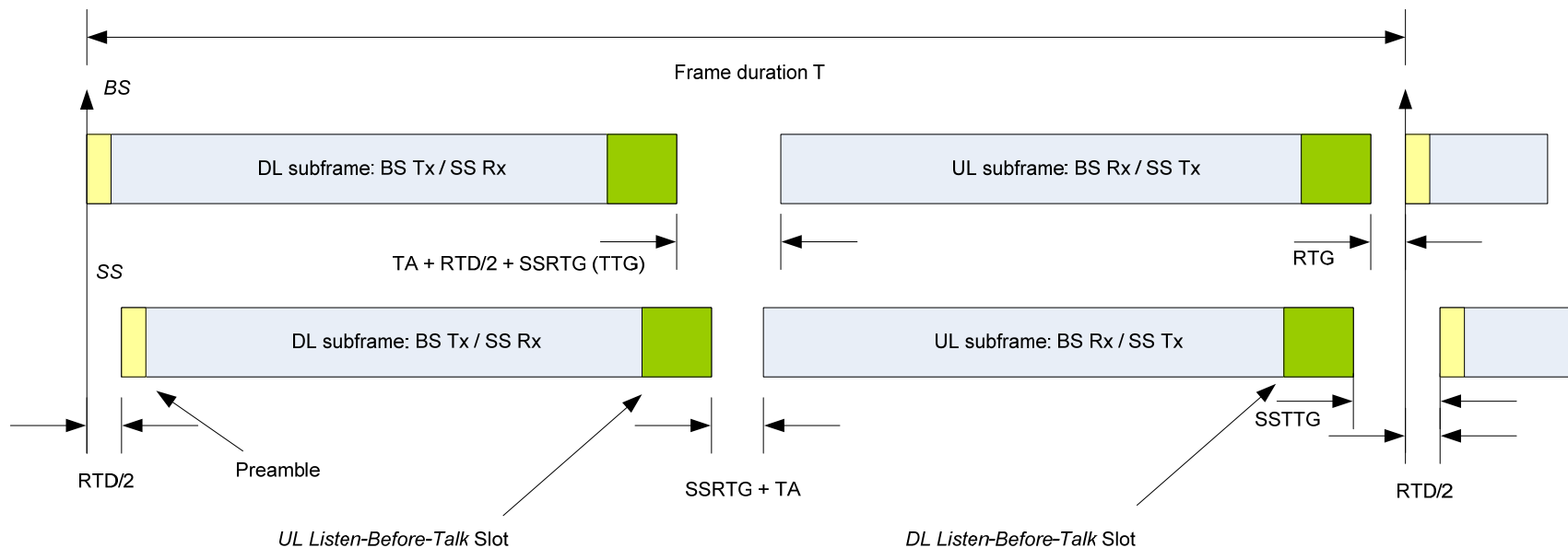


- Evaluation of link budget to calculate interference
- Compensation for *time of flight* given the microsecond resolution in the simulation
- -> Provides a decision on whether or not a device is transmitting at a given simulation instant

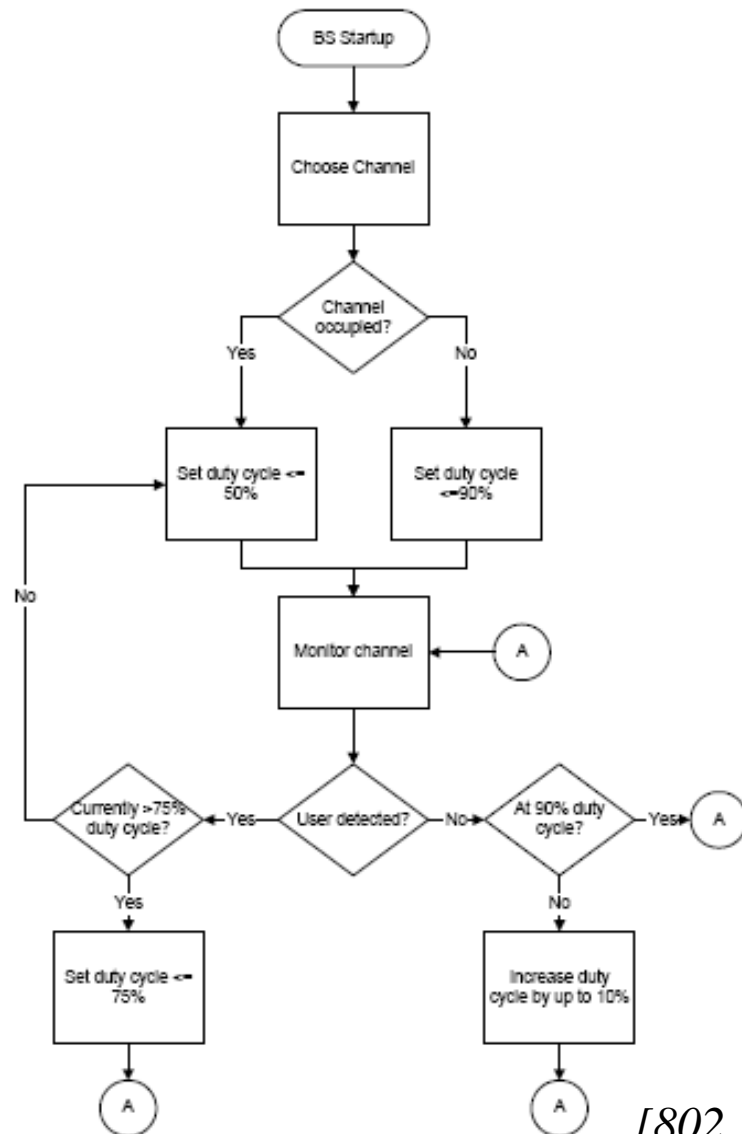


Listen Before Talk (LBT)

- Configuration:
 - DL LBT
 - UL LBT
 - DL&UL LBT
- First realisation: measured in a dedicated OFDM slot (102 μ s) just prior to respective DL and UL sub-frame
- Controlled at BS and associated SS - act independently



Adaptive Extended Quiet Period (EQP/aEQP)



- As implemented in 802.16h/D1
- Threshold 1 = -80dBm
- Threshold 2 = -75dBm
- Controlled at the BS
- Driven by interference calculations in the entire EQP UL sub-frame
- Measured at 50 μ s intervals

[802.16h/D1 sub clause 6.4.3.4]

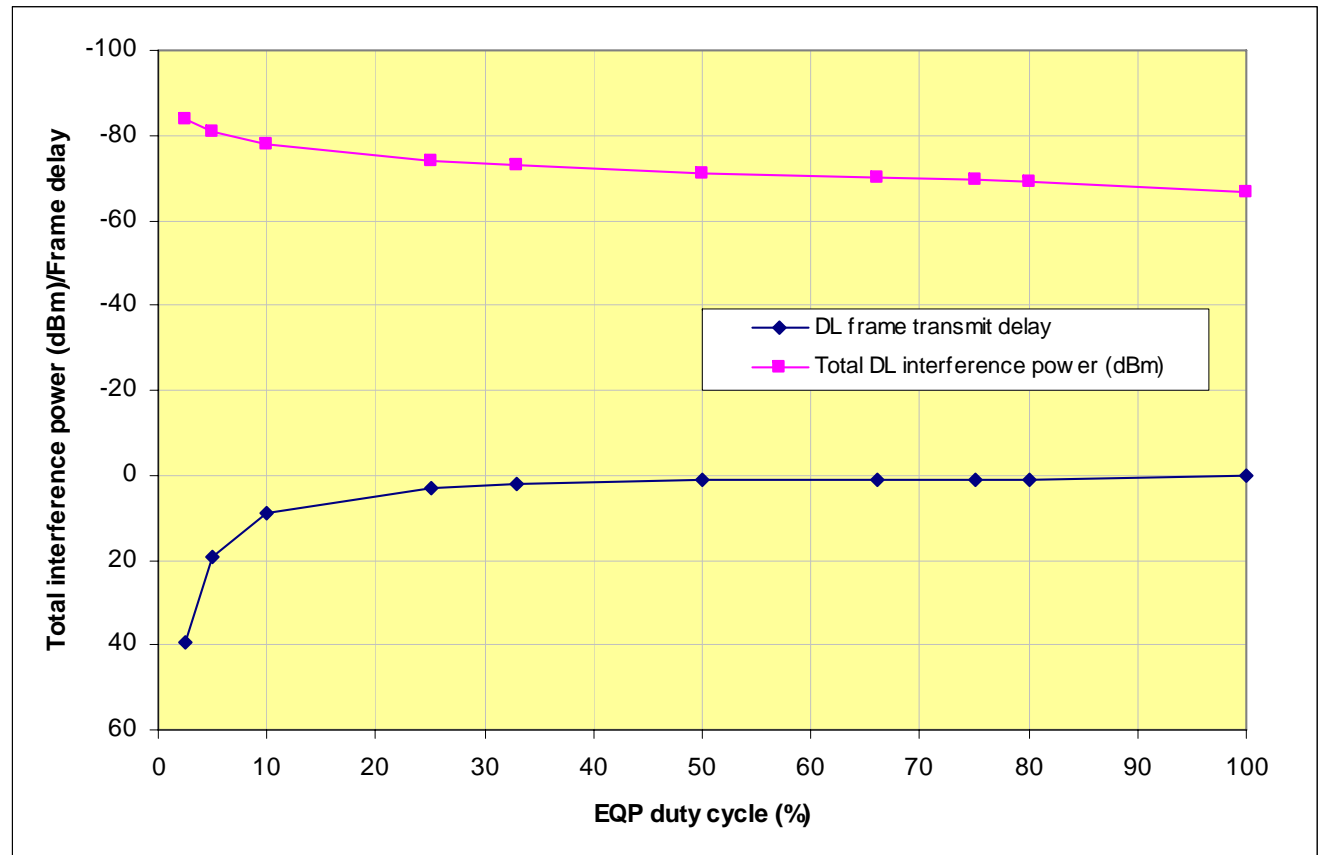
Results summary

- 16h BS with a maximum of 4 SS per BS
- Specification of the number of channels based on bandwidth
- Frame sync. and/or EQP sync.

- What *system wide* results are produced?
devices_active
general_int_level
- What *user specific* results are produced?
dl_lbt_interference_power_per_lbt_slot
ul_lbt_interference_power_per_lbt_slot
failed_dl_lbt_ratio
failed_ul_lbt_ratio
eqp_ratio
dl_aeqp_interference_assessment
dl_dot16_activity
ul_dot16_activity
dl_dot11_activity
ul_dot11_activity
dl_dot16_transmit_delay
ul_dot16_transmit_delay
dl_dot11_transmit_delay
ul_dot11_transmit_delay

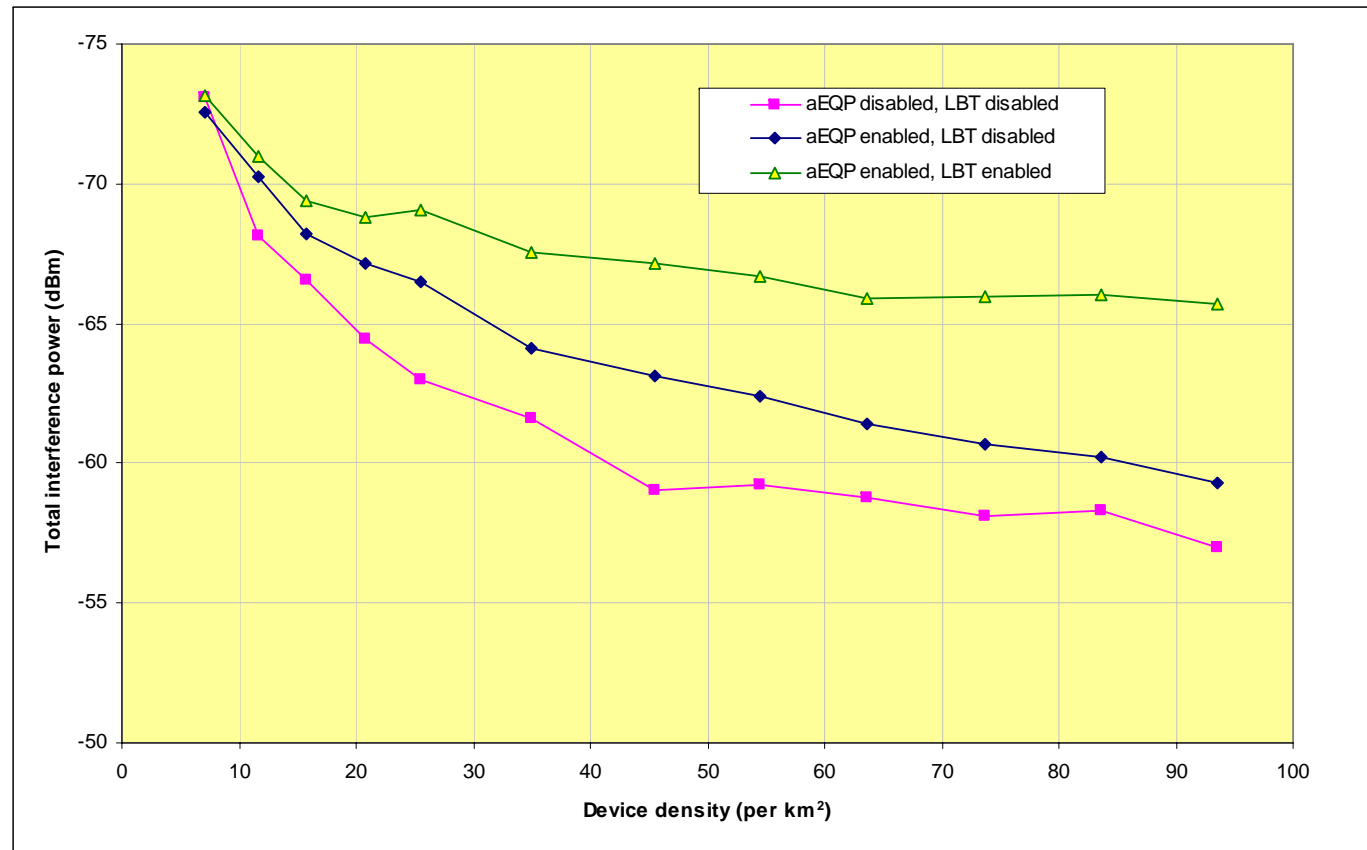
Simulation results I

- 5 channels
- No BS sync.
- Results for DL
- EQP behaviour



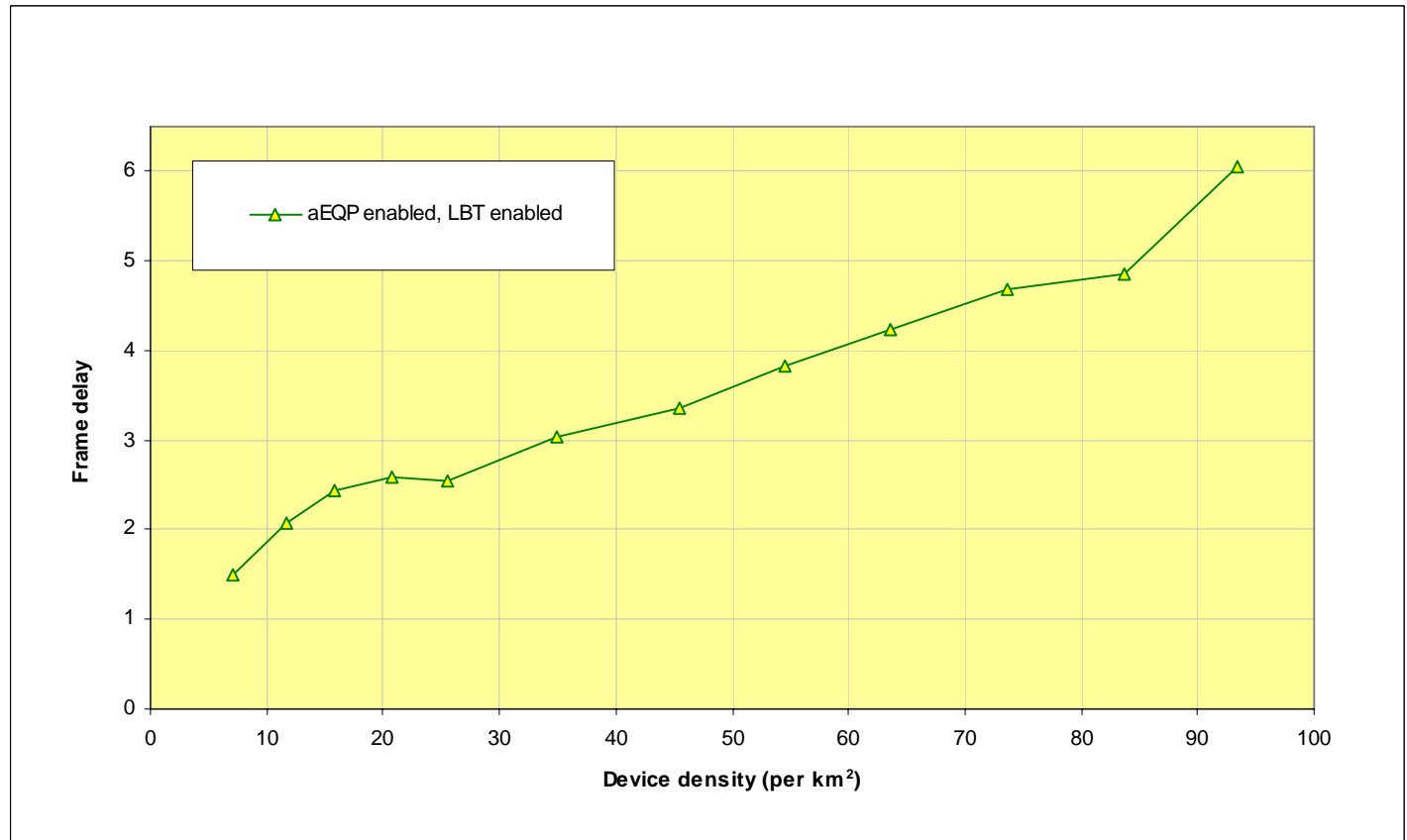
Simulation results II

- 1 channel
- No BS sync.
- DL considered
- aEQP and LBT behaviour



Simulation results III

- 1 channel
- No BS sync.
- DL considered
- aEQP and LBT behaviour



Future work

- Fully integrate the 802.11 model
- Improved interference reporting based on the incorporating of an 802.11 model
- Provide a statistical traffic model
- Provide a more realistic method for interference calculation
- Applicability to other bands containing 802.11 devices in other *legacy bands*