

Project	IEEE 802.16 Broadband Wireless Access Working Group < http://ieee802.org/16 >	
Title	The 2nd fast feedback channel region to reduce transfer delay of fast feedback data for 2-hop MR system	
Date Submitted	2007-03-13	
Source(s)	Ki Seok Kim, Hyunjae Kim, Sungcheol Chang, Young-il Kim ETRI 161,Gajeong-Dong,Yuseung-Gu, Daejeon, Korea 205-350	Voice:+82-42-860-5481 Fax: +82-42-861-1966 Email: khjgo@etri.re.kr
	Kyu Ha Lee, Changkyoon Kim Samsung Thales San 14, Nongseo-Dong, Giheung-Gu, Yongin, Gyeonggi-Do, Korea 449-712	Voice:+82-31-280-9917 Fax: +82-31-280-1620 Email: kyuha.lee@samsung.com
	Yousuf Saifullah, Shashikant Maheshwari, Haihong Zheng Nokia 6000 Connection Drive, Irving, Tx	Voice: +1(0) 972 894 5000 Email: Yosuf.saifullah@nokia.com
	Aik Chindapolk, Jimmy Chui, Hui Zeng Siemens Corporate Research 755 College Road East, Princeton, NJ, USA	Voice: +1 609 734 3364 Fax: +1 609 734 6565 Email: aik.chindapol@siemens.com
Re:	This is a response to Call for Technical Proposals regarding IEEE project P802.16j	
Abstract	In this contribution, we propose the 2nd fast feedback channel region between RS and MR-BS	
Purpose	Adoption of the proposed text and tables	
Notice	This document has been prepared to assist IEEE 802.16. It is offered as a basis for discussion and is not binding on the contributing individual(s) or organization(s). The material in this document is subject to change in form and content after further study. The contributor(s) reserve(s) the right to add, amend or withdraw	

material contained herein.

Release The contributor grants a free, irrevocable license to the IEEE to incorporate text contained in this contribution, and any modifications thereof, in the creation of an IEEE Standards publication; to copyright in the IEEE's name any IEEE Standards publication even though it may include portions of this contribution; and at the IEEE's sole discretion to permit others to reproduce in whole or in part the resulting IEEE Standards publication. The contributor also acknowledges and accepts that this contribution may be made public by IEEE 802.16.

Patent Policy and Procedures The contributor is familiar with the IEEE 802.16 Patent Policy and Procedures (Version 1.0) <<http://ieee802.org/16/ipr/patents/policy.html>>, including the statement "IEEE standards may include the known use of patent(s), including patent applications, if there is technical justification in the opinion of the standards-developing committee and provided the IEEE receives assurance from the patent holder that it will license applicants under reasonable terms and conditions for the purpose of implementing the standard."

Early disclosure to the Working Group of patent information that might be relevant to the standard is essential to reduce the possibility for delays in the development process and increase the likelihood that the draft publication will be approved for publication. Please notify the Chair <<mailto:r.b.marks@ieee.org>> as early as possible, in written or electronic form, of any patents (granted or under application) that may cover technology that is under consideration by or has been approved by IEEE 802.16. The Chair will disclose this notification via the IEEE 802.16 web site <<http://ieee802.org/16/ipr/patents/notices>>.

The 2nd fast Feedback channel region to reduce transfer delay of fast feedback data for 2-hop MR system

Ki Seok Kim, Hyunjae Kim, Sungcheol Chang, Young-il Kim, Kyu Ha Lee, Changkyoon Kim, Yousuf Saifullah, Shashikant Maheshwari, Haihong Zheng, Aik Chindapolk, Jimmy Chui, Hui Zeng

ETRI, Samsung Thales, Nokia, Siemens

1. Motivation

Generally, the fast feedback data in uplink fast feedback channel should be transferred as fast as possible. If MS sends the feedback data to MR-BS via RS with one or more frame transfer delays, the channel adaptation for MS can not be performed promptly by MR-BS. Therefore, the additional feedback channel region for rapid and accurate transmission of feedback data of MS in RS area is required. On the other hand, CQI is not seriously affected by transfer delay. However, If CQI can be also transmitted to MR-BS in a frame, MR-BS can easily control the CQICH allocation of MSs. Therefore, this additional feedback channel region can be also used to transfer the CQI of MS. Consequently, in our proposal, MR-BS can obtain the feedback data and CQI from MS in a frame by inserting another fast feedback channel region within RB period where RS can send the uplink data to MR-BS. Therefore, we can expect to get better system performance if the transfer delay can be reduced by the proposed fast feedback channel region.

2. Suggested Remedy

2.1 Proposed Fast Feedback Channel Structure for 2-hop MR system

Figure 1 shows the example of feedback channel allocation in the case of using two fast feedback channel regions in a frame. In order to reduce the transfer delay of fast feedback data, we propose another fast feedback channel region in addition to conventional one. This 2nd fast feedback channel region may be located within RB period where RS can send the uplink data to MR-BS. However, the location of 2nd fast feedback channel region which is informed by additional fast feedback allocation IE can be changed according to the position of RB period. The time-slot difference between the 1st and 2nd fast feedback channel region must be considered in the view of the processing time which is the time to retransmit the feedback data of MS1 to MR-BS after processing it. In RB period, MR-BS sets up the Tx fast feedback channel for RS in order to transmit fast feedback data and also sets up the Rx fast feedback channel for MR-BS to receive fast feedback data.

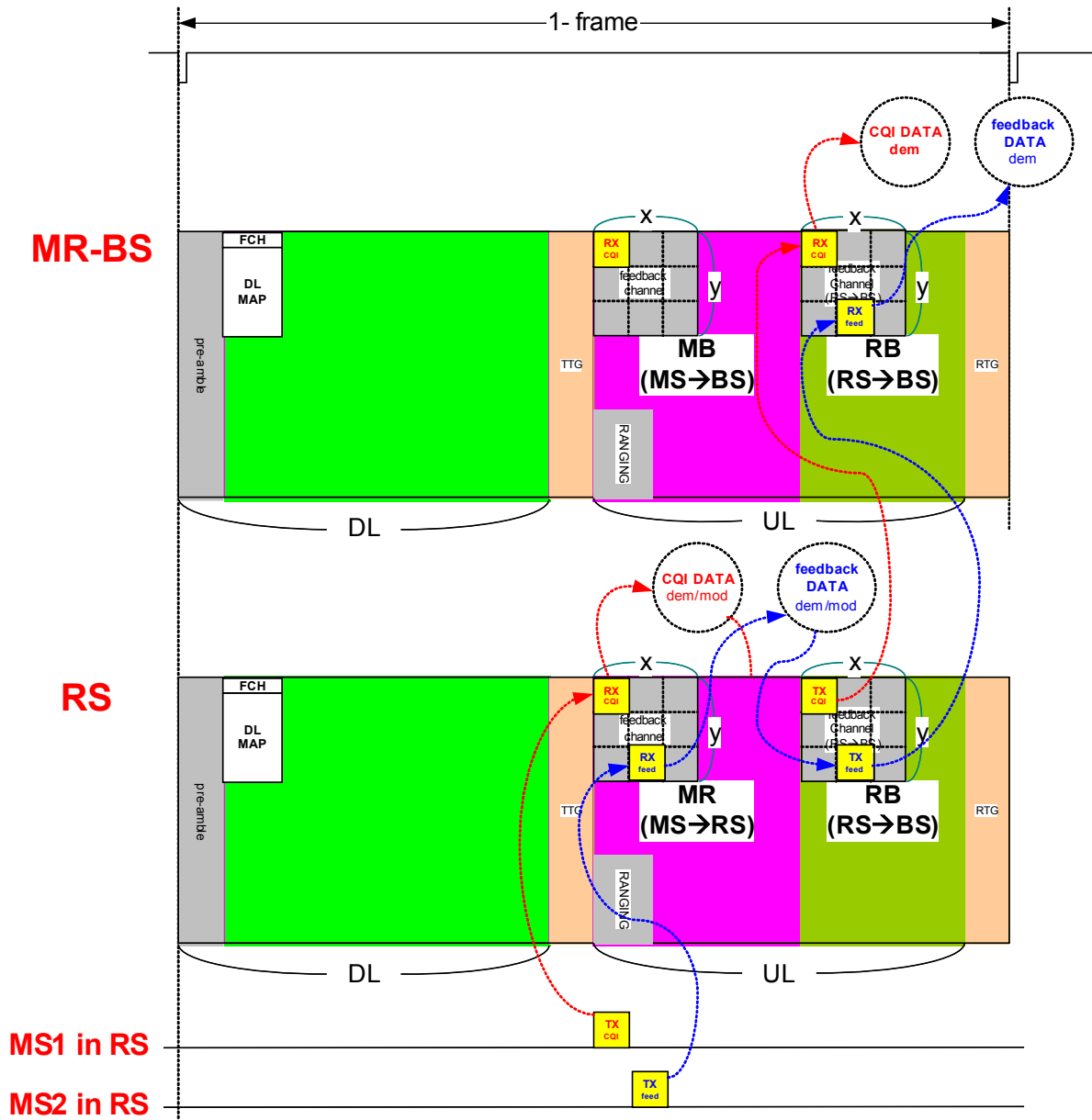


Figure 1. The example of fast feedback channel allocation in the case of using two fast feedback channel regions in a frame

Figure 2 shows the process diagram for the proposed fast feedback channel allocation. First of all, MR-BS broadcasts the 1st fast feedback channel allocation information by using FAST_FEEDBACK allocation IE. Therefore, all MSs and RSs in MR-BS can know the 1st fast feedback channel region. In the case of MS1 in MR-BS area, MR-BS allocates the fast feedback channel #n for MS1. After measuring downlink channel quality information, MS1 sends the fast feedback data through fast feedback channel #n and MR-BS can detect the fast feedback data of MS1.

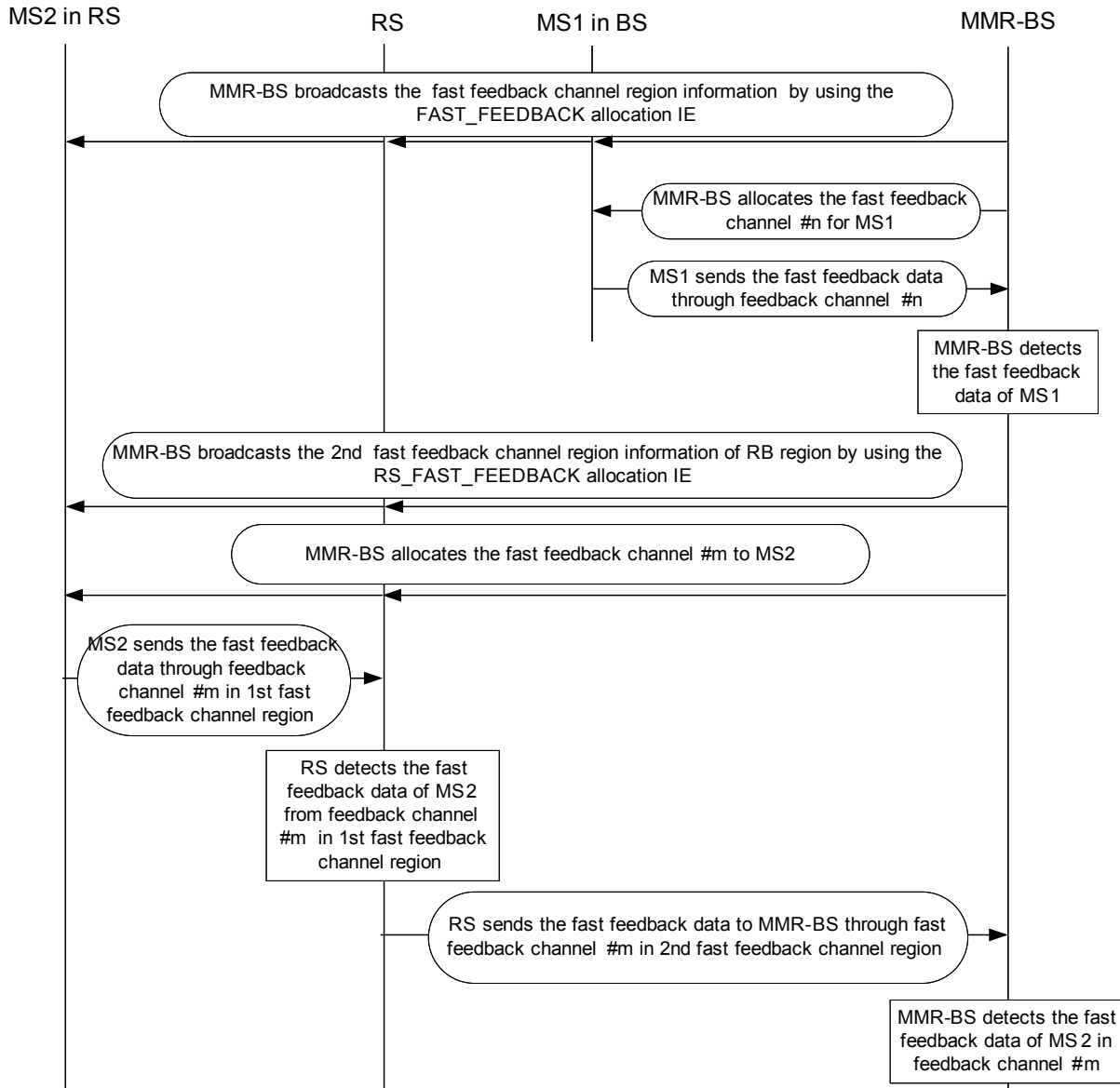


Figure 2. The process diagram for the proposed fast feedback channel allocation

In the case of MS2 in RS area, after broadcasting the 2nd fast feedback channel allocation information by using the RS_FAST_FEEDBACK allocation IE, MR-BS and RS allocate the 2nd fast feedback channel region within RB region. MR-BS allocates the fast feedback channel #m in 1st feedback channel region to MS2. And then, MS2 sends the fast feedback data through feedback channel #m. RS detects the fast feedback data of MS2 from feedback channel #m in the 1st fast feedback channel region. And then, RS sends the fast feedback data to MR-BS through feedback channel #m in 2nd fast feedback channel region. Finally, MR-BS detects the fast feedback data of MS2 from feedback channel #m in 2nd fast feedback channel region. Generally, the 2nd fast feedback channel with the same size of 1st fast feedback

channel should be allocated within RB period. Optionally, BS may allocate different size of region for the 1st and 2nd fast feedback channels. In this case, BS shall provide the RS with the mapping table of the 1st and the 2nd fast feedback channels. But this kind of method is also ignored in this contribution due to the complexity of pre/post processing.

3. Proposed Text Changes

[insert section 8.4.5.29 as follow]

8.4.5 Map message fields and IEs

8.4.5.4.29 RS-FAST-FEEDBACK allocation IE

MR-BS may place RS-FAST-FEEDBACK allocation IE() in the UL-MAP to allocate RS-FAST-FEEDBACK region. RS forwards the fast feedback messages from MS to MR-BS through RS-FAST-FEEDBACK region. The format of RS-FAST-FEEDBACK allocation IE is defined in Table xxx.

Table xxx. RS-FAST-FEEDBACK allocation IE Format

Syntax	Size	Notes
RS FAST FEEDBACK allocation IE {		
OFDMA symbol offset	8 bits	
Subchannel offset	7 bits	
No. OFDMA symbols	7 bits	
No. subchannels	7 bits	
Reserved	3 bits	
}		

4. References

[1] The 2nd fast feedback channel region to reduce transfer delay of fast feedback data for 2-hop MMR system, C802.16j-06_120.doc, Ki Seok Kim, Hyunjae Kim, Sungcheol Chang, Young-il Kim, Kyu Ha Lee, Changkyoon Kim, ETRI, Samsung Thales