

|                |  |   |
|----------------|--|---|
| Project        | <b>IEEE 802.16 Broadband Wireless Access Working Group</b> < <a href="http://ieee802.org/16">http://ieee802.org/16</a> >   |   |
| Title          | <b>Corrections on MS network entry procedures in transparent RS systems</b>  |   |
| Date Submitted | <b>2007-07-05</b>  |   |
| Source(s)      | <p>Kanchei (Ken) Loa, Yi-Hsueh Tsai,<br/>Yung-Ting Lee, Hua-Chiang Yin,<br/>Shiann-Tsong Sheu, Youn-Tai Lee,</p> <p>Institute for Information Industry<br/>8F, No. 218, Sec. 2, Dunhua S. Rd.,<br/>Taipei City 106, Taiwan</p> <p>Masato Okuda</p> <p>Fujitsu</p>  | <p>Voice: +886-2-27399616<br/>Fax: +886-2-23782328<br/><a href="mailto:loa@nmi.iii.org.tw">loa@nmi.iii.org.tw</a></p> <p><a href="mailto:okuda@jp.fujitsu.com">okuda@jp.fujitsu.com</a></p> |
| Re:            | IEEE 802.16j-07/019: "Call for Technical Comments Regarding IEEE Project 802.16j"  |   |
| Abstract       | This contribution proposes corrections on MS network entry procedures in transparent RS systems.   |   |
| Purpose        | Text proposal for 802.16j Baseline Document.   |   |
| Notice         | <i>This document does not represent the agreed views of the IEEE 802.16 Working Group or any of its subgroups. It represents only the views of the participants listed in the "Source(s)" field above. It is offered as a basis for discussion. It is not binding on the contributor(s), who reserve(s) the right to add, amend or withdraw material contained herein.</i>   |   |
| Release        | The contributor grants a free, irrevocable license to the IEEE to incorporate material contained in this contribution, and any modifications thereof, in the creation of an IEEE Standards publication; to copyright in the IEEE's name any IEEE Standards publication even though it may include portions of this contribution; and at the IEEE's sole discretion to permit others to reproduce in whole or in part the resulting IEEE Standards publication. The contributor also acknowledges and accepts that this contribution may be made public by IEEE 802.16.   |   |
| Patent Policy  | <p>The contributor is familiar with the IEEE-SA Patent Policy and Procedures:<br/>&lt;<a href="http://standards.ieee.org/guides/bylaws/sect6-7.html#6">http://standards.ieee.org/guides/bylaws/sect6-7.html#6</a>&gt; and<br/>&lt;<a href="http://standards.ieee.org/guides/opman/sect6.html#6.3">http://standards.ieee.org/guides/opman/sect6.html#6.3</a>&gt;.</p> <p>Further information is located at &lt;<a href="http://standards.ieee.org/board/pat/pat-material.html">http://standards.ieee.org/board/pat/pat-material.html</a>&gt; and<br/>&lt;<a href="http://standards.ieee.org/board/pat">http://standards.ieee.org/board/pat</a>&gt;.</p> |   |

# Correction on MS network entry procedures in transparent RS systems

*Kanchei (Ken) Loa, Yi-Hsueh Tsai, Yung-Ting Lee,  
Hua-Chiang Yin, Shiann-Tsong Sheu, Youn-Tai Lee  
Institute for Information Industry (III)*

## Introduction

This contribution corrects sequences chart and flow charts in baseline document IEEE 802.16j-06/026r4 for MS network entry procedures in transparent RS systems such that these charts are consistent with P802.16-2004 Cor2/D4. In order to facilitate the incorporation of this proposal into IEEE 802.16j standard, specific changes to the baseline working document IEEE 802.16j-06/026r4 are listed below.

Moreover, the flow charts of MS network entry procedures in Corrigenda 2/Draft 4 are provided in figure 1 for reference.

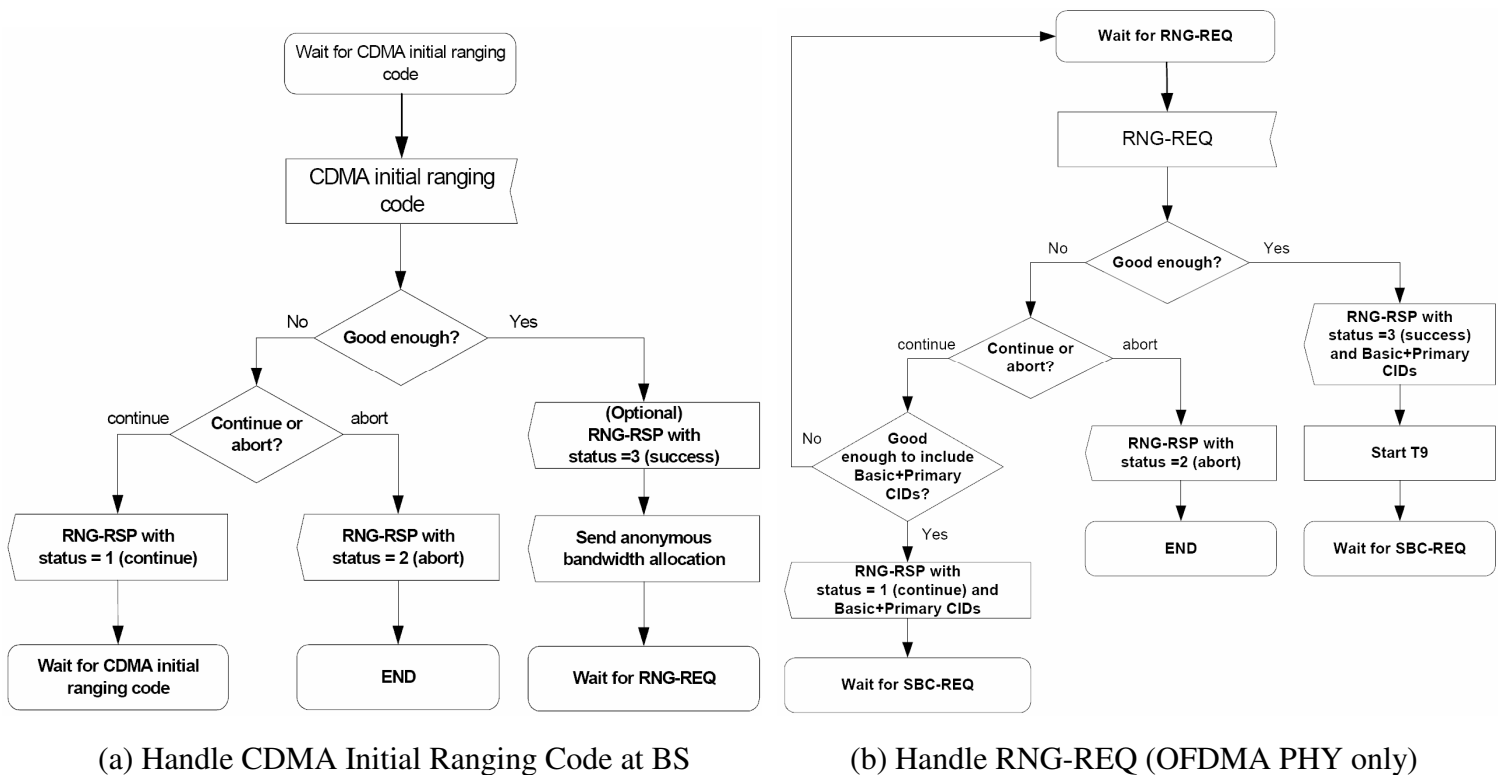
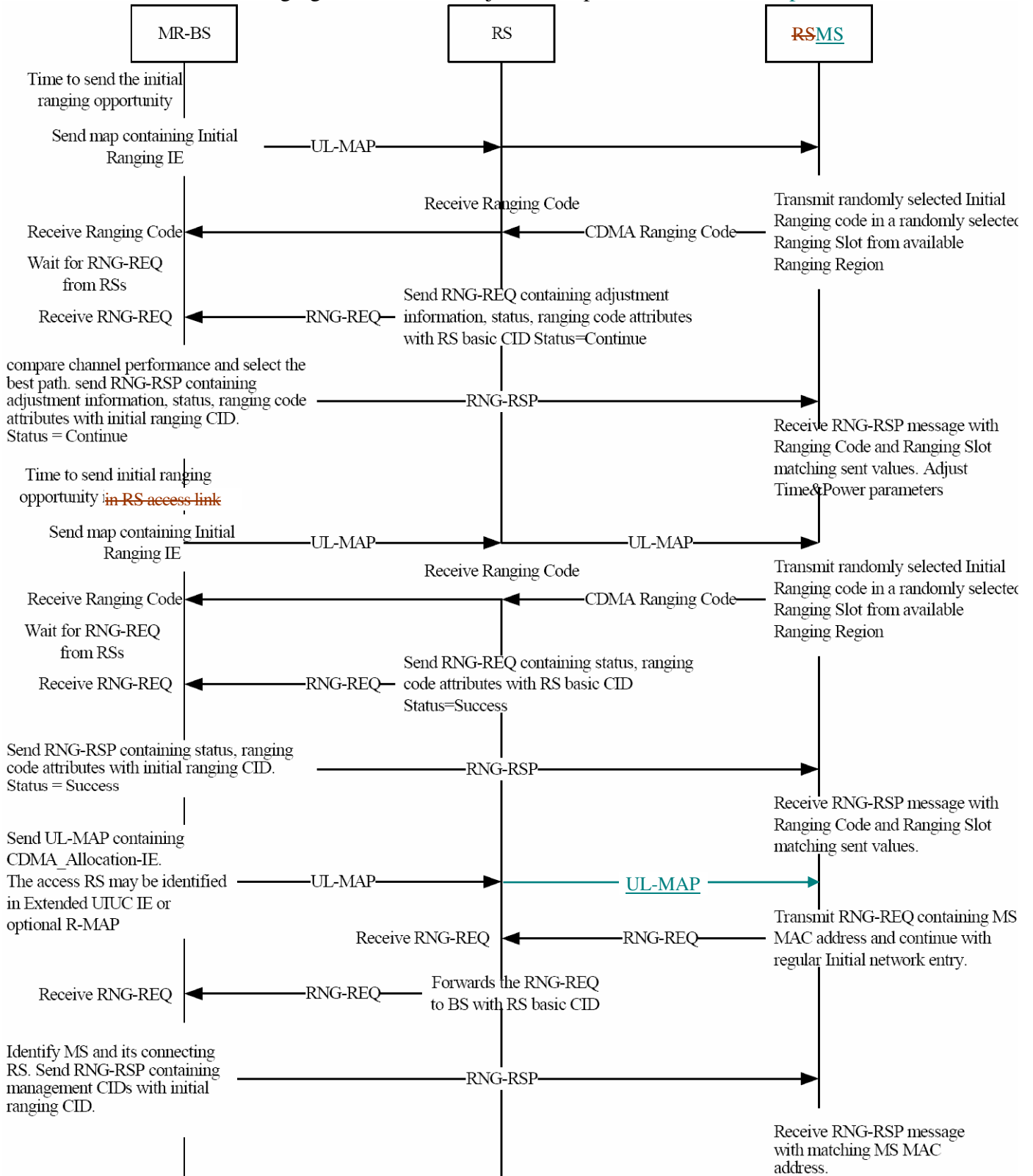


Figure 1 MS network entry procedures

## Proposed text changes

[Change the figure 199a in page 79 as following indicated]

Table 199a—Ranging and automatic adjustments procedure in **MRtransparent** mode



[Replaced the figure 95a in page 80 as following indicated]

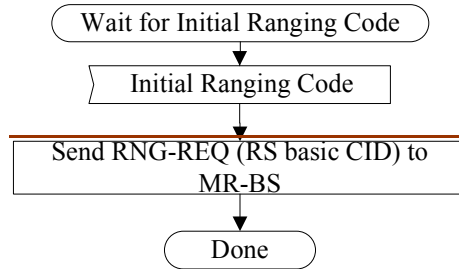


Figure 95a MS CDMA initial Ranging—Access Transparent RS

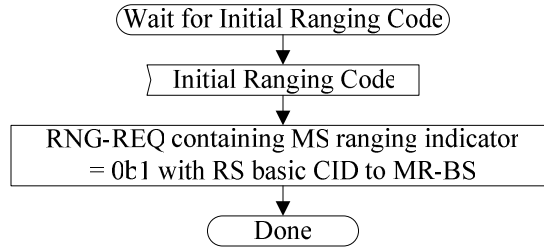


Figure 95a—Handle CDMA initial ranging code at transparent RS

[Replaced the figure 95b in page 80 as following indicated]

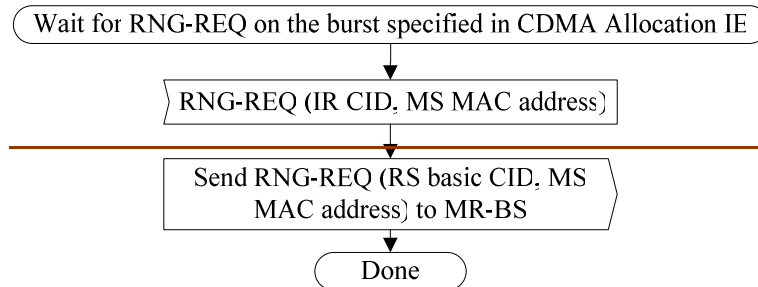


Figure 95b MS initial Ranging—Access Transparent RS

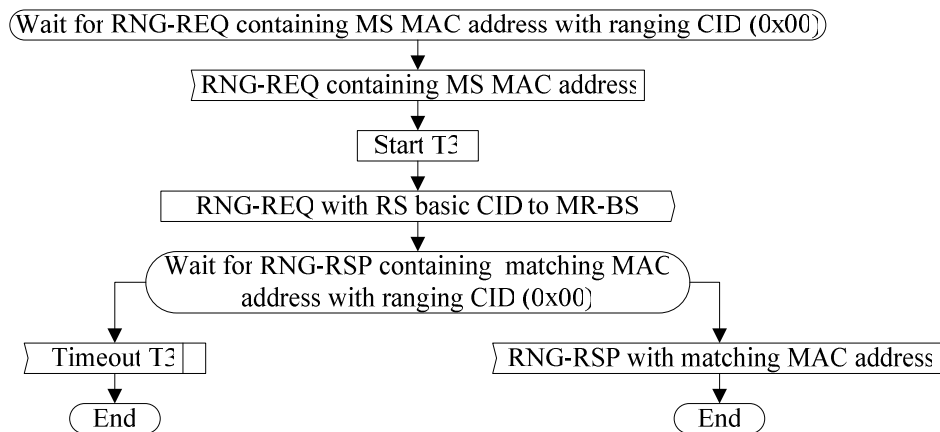


Figure 95b—Handle RNG-REQ in transparent RS

[Replaced the figure 95c in page 81 as following indicated]

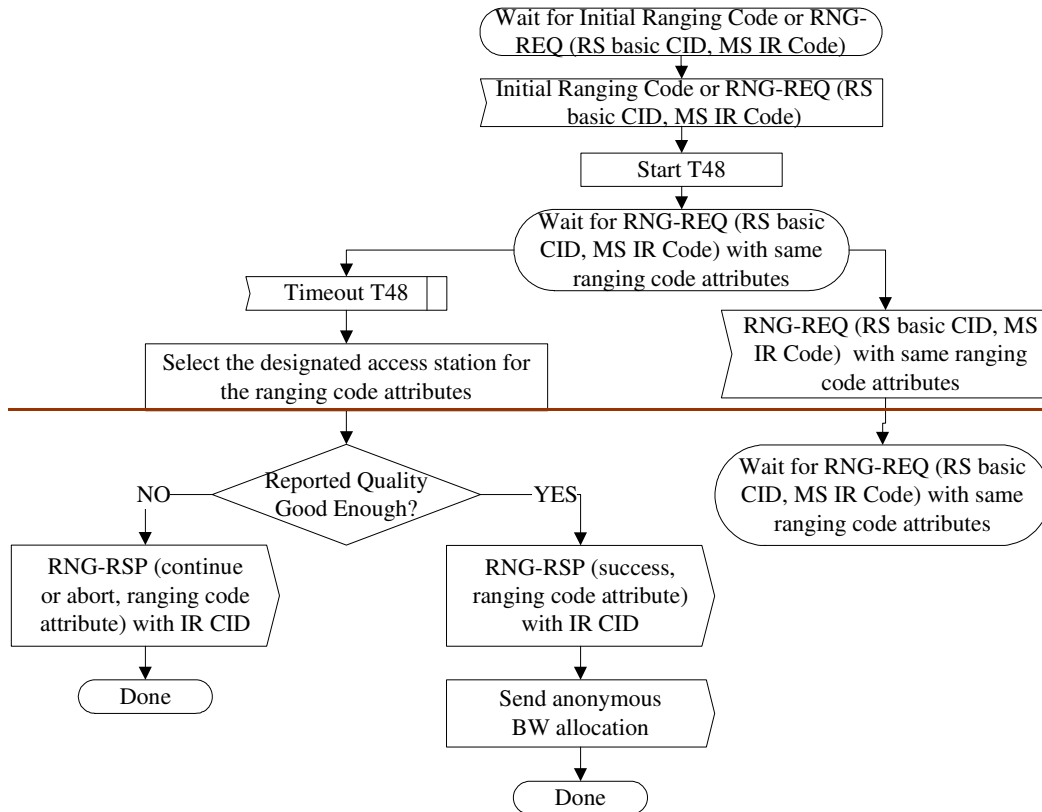


Figure 95c—MS CDMA Initial Ranging with Transparent RS—MR-BS

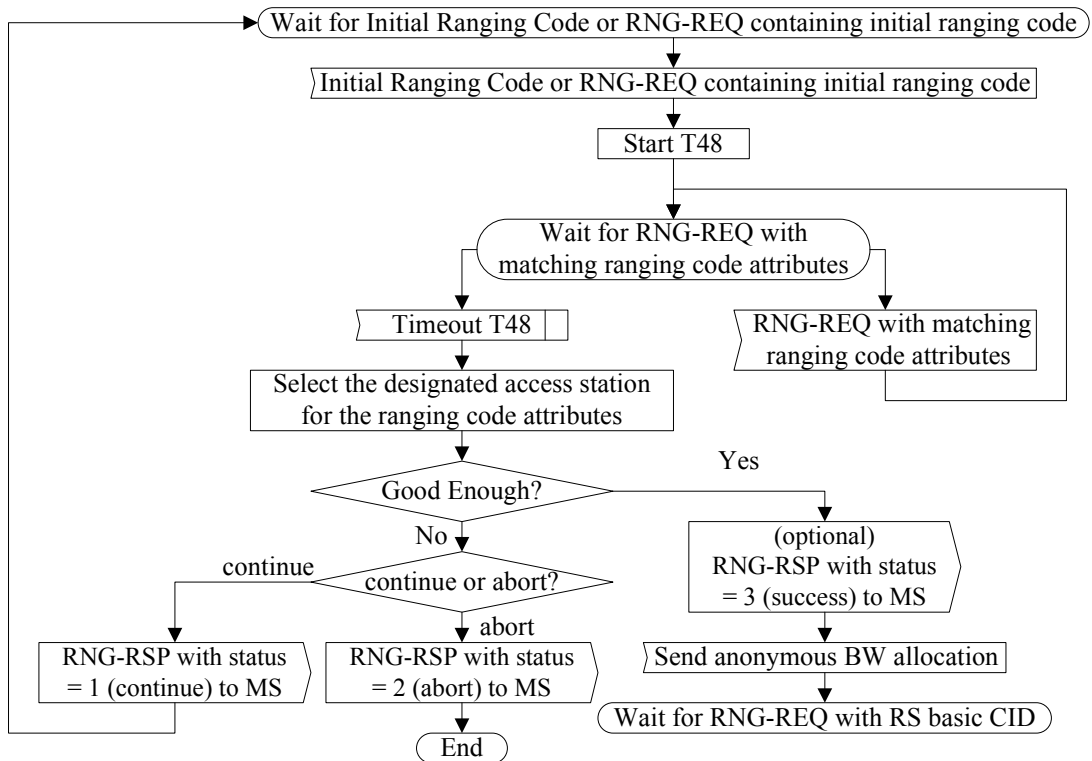
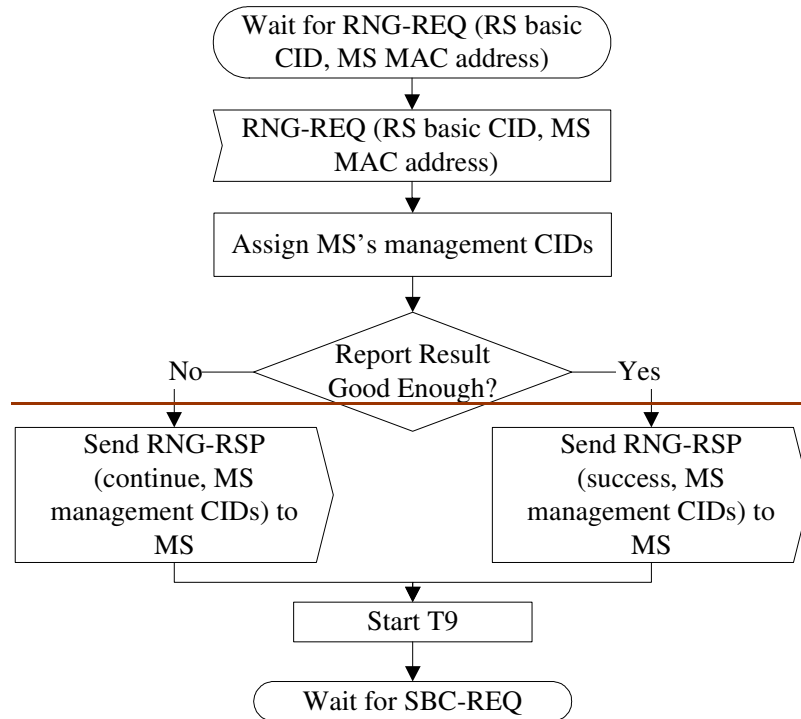


Figure 95c—Handle CDMA initial ranging code in transparent mode at MR-BS

[Replaced the figure 95d in page 82 as following indicated]



Note: T9 is the timer between the MR-BS sending an RNG-RSP to an MS and receiving an SBC-REQ from the same MS

~~Figure 95d—MS Initial Ranging with Transparent RS—MR-BS~~

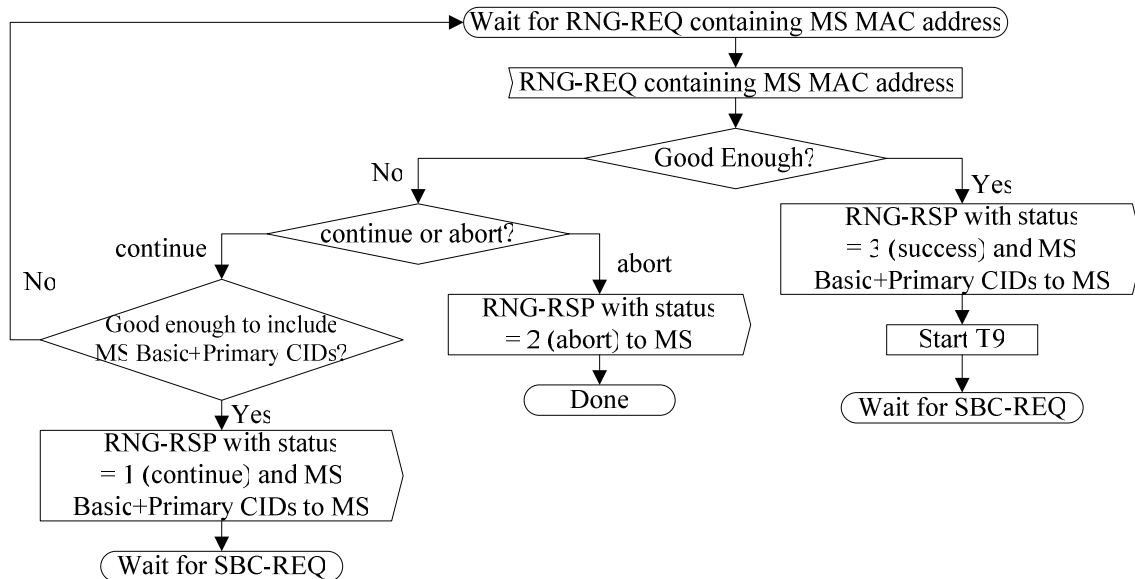


Figure 95d—Handle RNG-REQ in transparent mode at MR-BS