

Project	IEEE 802.16 Broadband Wireless Access Working Group < http://ieee802.org/16 >	
Title	Changes on Sleep-mode SDL	
Date Submitted	2004-03-08	
Source(s)	Changjae Lee, Kiseon Ryu, Jay Jin LG Electronics, Inc. 533, Hogue-1dong, Dongan-gu, Anyang-shi, Kyongki-do, Korea	Voice: 82-31-450-4387 Fax: 82-31-450-7912 [mailto:cjlee16@lge.com]
Re:	This is a response to a Call for Comments IEEE802.16e-04/xx on IEEE P802.16e-D1	
Abstract	This document contains suggestions to change the SDL on Sleep mode operation.	
Purpose	This document is submitted for review by 802.16e Working Group members	
Notice	This document has been prepared to assist IEEE 802.16. It is offered as a basis for discussion and is not binding on the contributing individual(s) or organization(s). The material in this document is subject to change in form and content after further study. The contributor(s) reserve(s) the right to add, amend or withdraw material contained herein.	
Release	The contributor grants a free, irrevocable license to the IEEE to incorporate material contained in this contribution, and any modifications thereof, in the creation of an IEEE Standards publication; to copyright in the IEEE's name any IEEE Standards publication even though it may include portions of this contribution; and at the IEEE's sole discretion to permit others to reproduce in whole or in part the resulting IEEE Standards publication. The contributor also acknowledges and accepts that this contribution may be made public by IEEE 802.16.	
Patent Policy and Procedures	The contributor is familiar with the IEEE 802.16 Patent Policy and Procedures < http://ieee802.org/16/ipr/patents/policy.html >, including the statement "IEEE standards may include the known use of patent(s), including patent applications, provided the IEEE receives assurance from the patent holder or applicant with respect to patents essential for compliance with both mandatory and optional portions of the standard." Early disclosure to the Working Group of patent information that might be relevant to the standard is essential to reduce the possibility for delays in the development process and increase the likelihood that the draft publication will be approved for publication. Please notify the Chair < mailto:chair@wirelessman.org > as early as possible, in written or electronic form, if patented technology (or technology under patent application) might be incorporated into a draft standard being developed within the IEEE 802.16 Working Group. The Chair will disclose this notification via the IEEE 802.16 web site < http://ieee802.org/16/ipr/patents/notices >.	

Changes on Sleep mode SDL

Changjae Lee, Ki-Seon Ryu, Jay Jin

LG Electronics

1. Background

According to line 37-41 at page 35 in TGe Draft Document IEEE 802.16e-D1, “During a listening-interval, the MSS shall decide whether to stay awake or go back to sleep based on a positive MOB_TRF-IND from the Serving BS.”

There are four cases to decide during listening-interval.

- 1) The MSS receives MOB_TRF_IND message with num-positive=0.
- 2) The MSS receives MOB_TRF_IND message with num-positive>0, but there were not PDUs addressed for it.
- 3) The MSS receives MOB_TRF_IND message with num-positive>0, there were PDUs addressed for it.
- 4) The MSS didn't receive any MOB_TRF-IND message although the listening interval has passed.

In the case of 1) and 2), the MSS shall return to Sleep mode.

In the case of 3), the MSS shall remain awake, terminating the sleep-interval and re-entering Normal Operation.

According to line 20-21 at page 43, “If the MSS does not find the expected MOB_TRF-IND broadcast message, the MSS shall return to Normal Operation.”

So, in the case of 4), the MSS shall return to Normal Operation.

But, the Figure 108d at page 39 shows something wrong as follows.

- MSS returns to Listening mode in spite of the case of 2).
- There is no description about the case of 4) in the figure.

So, we propose changes on Sleep mode SDL in the Figure 108d at page 39.

2. Proposed changes on Sleep mode operation SDL in IEEE P802.16e-D1

6.4.17 Sleep-mode for mobility-supporting MSS

[Replace Figure 108d to the following at page 39:]

From :

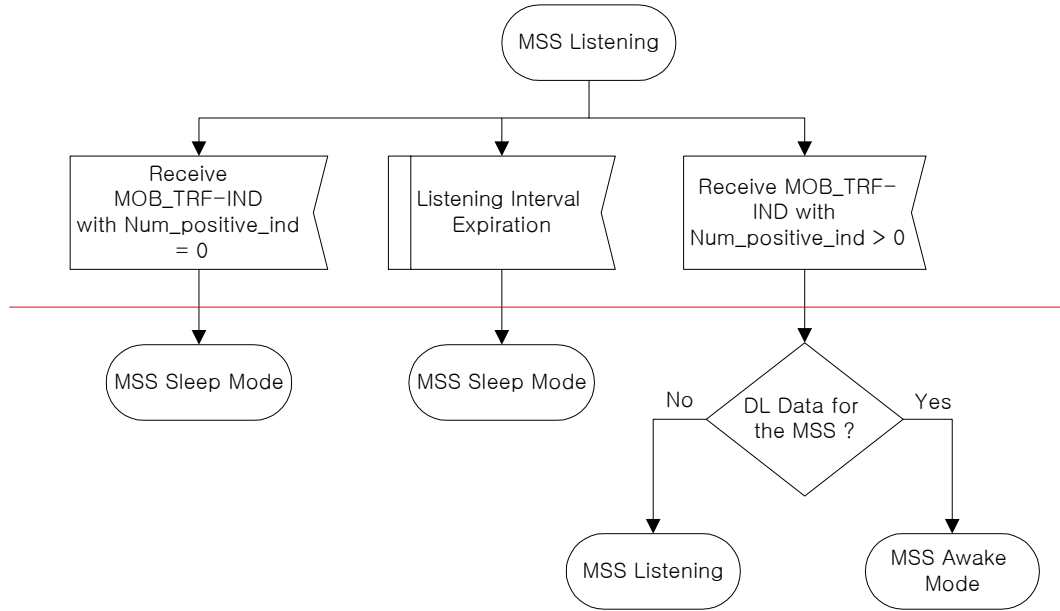


Figure 108d—Typical MSS Listening SDL Diagram

To :

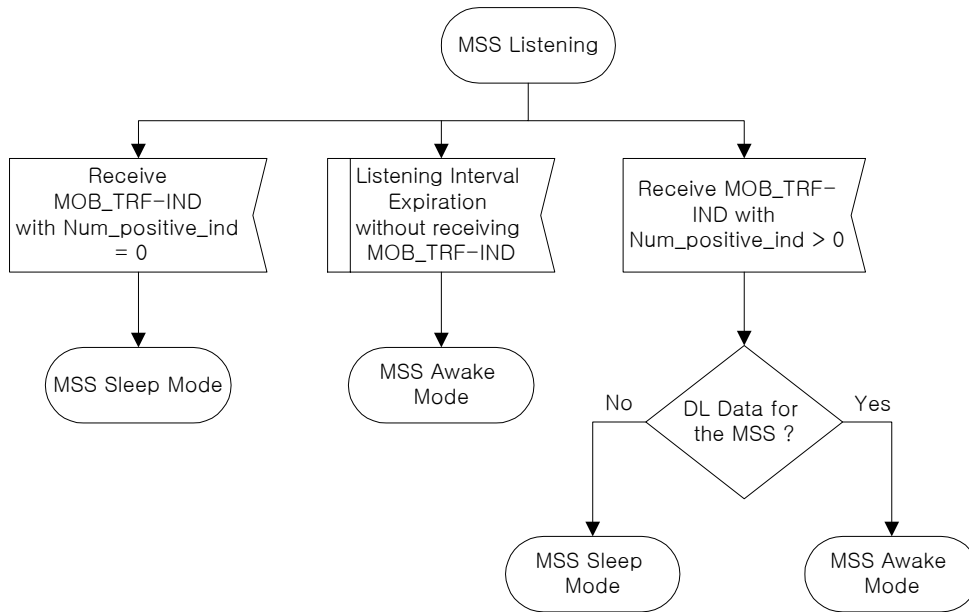


Figure 108d—Typical MSS Listening SDL Diagram