

| | | |
|------------------------------|---|--|
| Project | IEEE 802.16 Broadband Wireless Access Working Group < http://ieee802.org/16 > | |
| Title | Enhanced Broadcast/Multicast Capabilities | |
| Date | 2004-07-08 | |
| Submitted | | |
| Source(s) | Yong Chang/Ph.D, Geun Hwi Lim/Ph.D B.S.Bae/Ph.D, D.K.Kim Samsung Electronic, Suwon P.O.Box 105, 416, Maetan-3dong, Paldal-gu, Suwon-si,Gyeonggi-do, Korea 442-742 yongchang@samsung.com | |
| | Yongjoo Tcha, Sangho Yi, Seong-Choon Lee yjtcha@kt.co.kr KT, 17 Woomyeon-dong, Seocho-gu, Seoul, 137-792, Korea | |
| Re: | IEEE P802.16e/D3-2004 | |
| Abstract | Enhanced broadcast/multicast capabilities of 802.16e. | |
| Purpose | Review and Adopt the suggested changes into P802.16e/D3 | |
| Notice | This document has been prepared to assist IEEE 802.16. It is offered as a basis for discussion and is not binding on the contributing individual(s) or organization(s). The material in this document is subject to change in form and content after further study. The contributor(s) reserve(s) the right to add, amend or withdraw material contained herein. | |
| Release | The contributor grants a free, irrevocable license to the IEEE to incorporate material contained in this contribution, and any modifications thereof, in the creation of an IEEE Standards publication; to copyright in the IEEE's name any IEEE Standards publication even though it may include portions of this contribution; and at the IEEE's sole discretion to permit others to reproduce in whole or in part the resulting IEEE Standards publication. The contributor also acknowledges and accepts that this contribution may be made public by IEEE 802.16. | |
| Patent Policy and Procedures | The contributor is familiar with the IEEE 802.16 Patent Policy and Procedures < http://ieee802.org/16/ipr/patents/policy.html >, including the statement "IEEE standards may include the known use of patent(s), including patent applications, provided the IEEE receives assurance from the patent holder or applicant with respect to patents essential for compliance with both mandatory and optional portions of the standard." Early disclosure to the Working Group of patent information that might be relevant to the standard is essential to reduce the possibility for delays in the development process and increase the likelihood that the draft publication will be approved for publication. Please notify the Chair < mailto:chair@wirelessman.org > as early as possible, in written or electronic form, if patented technology (or technology under patent application) might be incorporated into a draft standard being developed within the IEEE 802.16 Working Group. The Chair will disclose this notification via the IEEE 802.16 web site < http://ieee802.org/16/ipr/patents/notices >. | |

History

| <u>Revision</u> | <u>Changes</u> |
|-----------------|--|
| <u>Rev 0.</u> | <ul style="list-style-type: none">• <u>C80216e-04/201</u> |
| <u>Rev 1.</u> | <ul style="list-style-type: none">• <u>Harmonize C80216e-04/201 with C80216e-4/191, C80216e-04/195r1, and C80216e-04/196.</u><ol style="list-style-type: none"><u>1. Multicast CID is introduced.</u><u>2. Reason for MBS_ZONE concept</u><u>3. MBS Security related text</u>• <u>Following Reply Comments are reflected more clearly.</u><ol style="list-style-type: none"><u>2. Reason for MBS_ZONE concept</u><u>3. MBS Security related text</u> |
| | |

Enhanced Broadcast/Multicast Capabilities

Yong Chang, Beom Sik Bae, Dae Gyun Kim, Geun Hwi Lim
Samsung Electronics, Ltd.

Yongjoo Tcha, Sangho Yi, Seong-Choon Lee

KT

1. Introduction

(1) Definition for Multicast and broadcast service on the cell

Multicast and broadcast service is defined as all MSS successfully registered to the specific multimedia broadcast content on the network level can receive on the cell the encrypted MAC PDUs of the multimedia broadcast content that multiple BSs transmit on the DL anywhere under the given time period.

(2) Requirements for the multicast and broadcast service on the cell

There are several basic requirements for MBS(multicast and broadcast service) on the cell. These requirements are listed below:

- **Power saving:** The MSS regardless of its current mode (e.g., awake mode, idle mode) shall save its power consumption during the period that the MSS is receiving MBS. There may be a mechanism for saving MSS's power during the period that the MSS is receiving the multicast and broadcast content from the BS.
- **Mobility:** The MSS shall be provided seamless connection for MBS when the MSS moves across the BSs boundaries.
- **MBS Zone:** MBS content may be transmitted to all or some selected MBS zone of the network. That is, the geographical zones to transmit the MBS content may be configured differently.
- **Security:** MBS contents may be securely delivered to the only authorized users. Encryption keys for MAC PDU of the MBS content may be the same over multiple BSs.

(3) MBS zone concept

MBS related parameters (e.g. security key, multicast CID, or etc.) may be different in some region. And a MBS content may be broadcast only in a restricted region. Therefore, when a MSS monitoring a MBS content moves and performs a handoff, the MSS should determine whether the stored MBS information is valid, and whether the MSS can continuously monitor the MBS content.

If the MSS knows the MBS content is not monitored in a cell owing to the using the different parameters or not transmitting the MBS content, the MSS should access to a new BS to update its parameters for the MBS content, especially if the MSS is in Idle state. If MBS Zone concept is introduced, a MSS can immediately know the validness of its stored MBS parameters by checking MBS zone identifier.

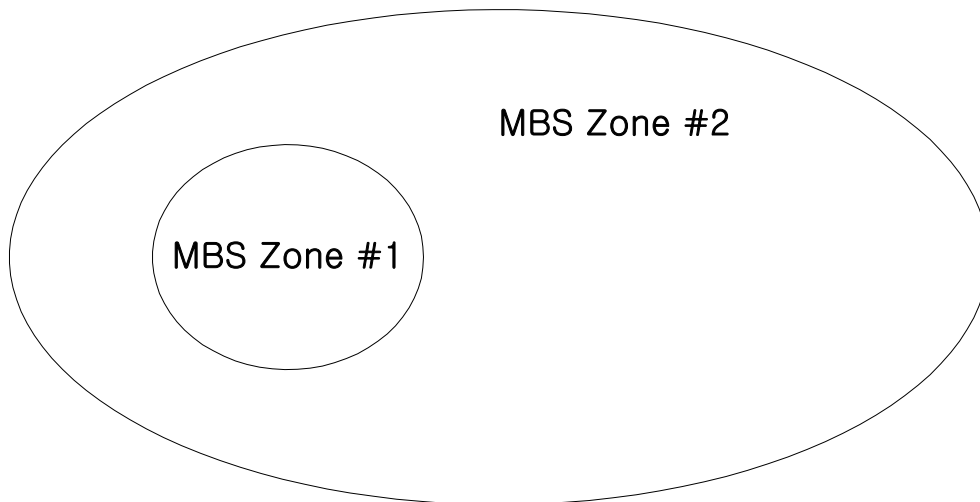
In our contribution, MBS zone is associated with a MBS service (or multicast CID). Also a same MBS zone identifier can be assigned for multiple MBS services.

Figure in the next page shows an example. It shows two kinds of MBS content. One (HBO and CNN) may be broadcast in a city region, but another (M Shop) may be broadcast only in a shopping mall. HBO (multicast CID = 1) and CNN (multicast CID = 2)

is associated with MBS zone #1 and M_Shop is associated with MBS zone #2. MS #1 is monitoring HBO, MS #2 CNN, and MS #3 M_shop. A BS included in MBS zone #1 transmits HBO and CNN, and the parameters for HBO or CNN are not changed in all BSs included in MBS zone #1. A BS included in MBS zone #2 transmits M_Shop. If a BS is included in MBS zone #1 and #2, the BS transmits HBO, CNN, and M_Shop. However, if a BS is included only in MBS zone #1, the BS transmits only HBO and CNN.

When MSS #3, which is monitoring M_shop, moves outside MBS zone #2, MSS #3 can know that the new BS does not transmit M_shop by checking MBS zone identifier, which can be known by receiving MBS_Zone_IE. If a new BS does not send a MBS_Zone id stored in MS #3, MSS #3 accesses a new BS to update the related parameters. If M_shop is not transmitted in the BS, MSS #3 stops monitoring M_shop content.

When MSS #1 or MSS #2, which monitors HBO or CNN moves outside MBS zone #2, but it moves inside MBS zone #1, the MSS may not do nothing and can continuously monitor HBO or CNN, Because a new BS also sends the MBS zone id stored in MSS #2 and MSS #3. When MSS #2 or MSS #3 moves outside MBS zone #1, the MSS accesses a new BS to update the related parameters. If HBO content is also transmitted from a new BS with the different parameter values, the MSS shall update the stored parameters received from the new BS and continuously monitor HBO or CNN. The parameters for the MBS content may include a new CID, new security, a new MBS zone identifier, and etc. If HBO or CNN is not transmitted from the new BS, the MSS stops monitoring it.

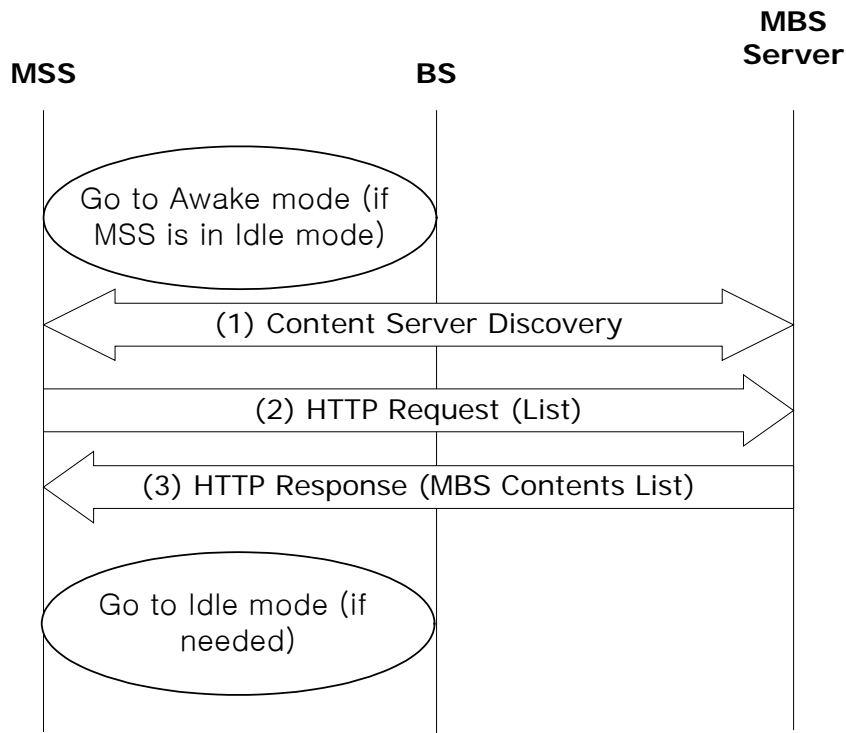


MSS #1 monitors and stores
 HBO : CID = 1
 MBS Zone id = 1
 MSS #2 monitors and stores
 CNN : CID = 2
 MBS Zone id = 1
 MSS #3 monitors and stores
 M_Shop : CID = 3
 MBS Zone id = 2

2. Multicast and Broadcast service operation

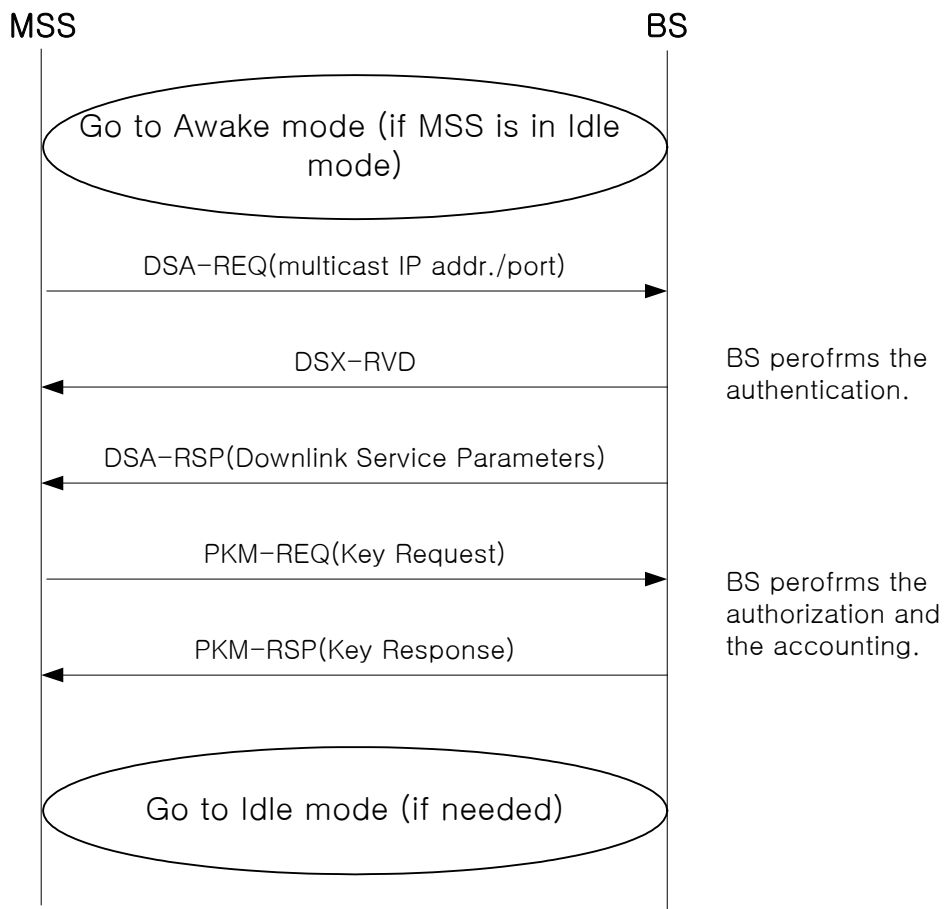
- **MBS Information Acquisition**

- (1) If MSS is in idle mode or powers up, MSS transits into the awake-mode.
- (2) MSS sends a HTTP Request for MBS list to MBS Content Server.
- (3) MBS Content Server sends a HTTP Response including MBS contents list, which includes some lists of MBS content name, Multicast IP addr./port no. (If MBS packets are delivered in IP packet), etc.
- (4) MSS either enter into the idle mode or stays in the awake-mode.



• **MBS Authentication and Security Key Acquisition**

(5) After acquiring the MBS Channel information, MSS sends DSA-REQ message with the specific



MBS content's multicast IP address and port number to the BS.

- (6) BS sends the DSX-RVD message to acknowledge DSA-REQ message and perform the authentication procedure for authorize the MBS content receipt.
- (7) After the successful authentication and authorization, the BS sends DSA-RSP message to the MS with the information of downlink service parameters(e.g, MBS SA-ID, etc)
- (8) MSS sends PKM-REQ message to the BS for obtaining the MBS key to decrypt the encrypted MBS MAC PDU transmitted from the BS.
- (9) BS sends PKM-RSP message to the MSS with the MBS key.
- (10) MSS decrypts the encrypted MAC PDUs for corresponding MBS content.

3. Proposed Text Changes to 802.16e/D3

6.3.13 ~~Establishment of multicast connections~~Multicast service on single cell

The BS may establish a downlink multicast service by creating a connection with each SS to be associated with the service. ~~Any available traffic CID value may be used for the service (i.e. there are no dedicated CIDs for multicast transport connections). Some traffic CID values may be assigned for the service (i.e. there may be some dedicated CIDs for multicast transport connections).~~ To ensure proper multicast operation, the CID used for the service is the same for all BSs and all MSSs on the same channel that participate in the connection. ~~The SSs need not be aware that the connection is a multicast connection.~~ The data transmitted on the connection with the given CID shall be received and processed by the MAC of each involved MSS. Thus each multicast SDU is transmitted only once per BS channel. Since a multicast connection is associated with a service flow, it is associated with the QoS and traffic parameters for that service flow.

ARQ is not applicable to multicast connections.

If a downlink multicast connection is to be encrypted, each SS participating in the connection shall have an additional security association (SA), allowing that connection to be encrypted using keys that are independent of those used for other encrypted transmissions between the MSSs and the BS.

6.3.14 Seamless Multicast and broadcast service over multiple cells

Multicast and broadcast service is defined as a kind of service that all MSSs successfully registered to the specific multicast and broadcast content on the network level can receive on the cell the encrypted MAC PDUs of the multicast and broadcast content that multiple BSs transmit anywhere under the given time period.

Multicast and broadcast service shall provide access control against thieves of service by enforcing high speed data encryption based on AES CTR defined in NIST Special Publication 800-38A, FIPS 197. Detail of MBS Security is defined in section 7.x.x.x PKMv2 MBS Security Support.

6.3.14.1 Establishment of multicast and broadcast services on the cell

Since the MSS in the idle mode can receive the multicast and broadcast service on the cell, the connection establishment of multicast and broadcast service between the BS and the MSS should be maintained regardless of the MSS's current mode. That is the connection for the MBS is not dedicated to the specific MSS and is maintained even though the MSS is either in awake/sleep mode or in the idle mode. If the MSS receiving MBS enters into the idle mode, the MSS continuously maintains the information of MBS connection such as the session context and the security context for the specific MBS and receives the current MBS without any interruption. This characteristic of the MBS connection is slightly different from the current definition of connection.

The BS may establish a downlink multicast and broadcast service by creating a multicast and broadcast virtual connection when the service commences. The virtual connection is a kind of a connection and is associated with the service, but is not associated with a certain MSS. The virtual connection in the BS is maintained until the service is not available furthermore. The virtual connection in the MSS may be created by performing the same procedure of creating a connection. The virtual connection in the MSS may not be deleted even though the MSS goes into Idle mode or the MSS does not monitor a downlink multicast and broadcast service. The virtual connection may be deleted when the service is not available anymore. Some traffic CID values may be assigned for the service (i.e. there are some dedicated CIDs for multicast transport connections). To ensure proper multicast and broadcast operation, the CID used for the service is the same for all MSSs on the same channel that have the same virtual connection. The data transmitted with the given CID may be received and processed by the MAC of each involved MSS. And each multicast and broadcast SDU is transmitted only once per BS channel. Since a multicast and broadcast virtual connection is associated with a service flow, it is associated with the QoS and traffic parameters for that service flow.

ARQ is not applicable to multicast and broadcast virtual connection.

If a downlink multicast and broadcast virtual connection is to be encrypted, each MSS participating in the connection shall have an additional security association (SA), allowing that virtual connection to be encrypted using keys that are independent of those used for other encrypted transmissions between the MSSs and the BS.

6.3.14.2 Validness of a virtual connection and CID assignment over multiple cells

To provide seamless multicast and broadcast service over multiple cells, a virtual connection for a multicast and broadcast service shall be valid through the **multiple** cells without re-establishment of new virtual connection. Also, CID value associated with the virtual connection shall be **the same** over the **multiple** cells.

If symbols for a seamless broadcast and multicast service can be distinguished with symbols for other services, CID value for a seamless multicast and broadcast service in a cell may be the same as a **CID value that** is used for a unicast service in the cell. The reason is that MSS can determine a CID for multicast and broadcast service and a CID for other services even though the same CID value may be assigned for both services.

6.3.14.3 Transmission of packets for a seamless multicast and broadcast service

BSs can transmit MAC PDUs for a seamless multicast and broadcast service with two approaches. One approach is to transmit a MAC PDU in one frame and another approach is to transmit coded symbols over multiple frames.

6.3.14.3.1 Unitary transmission approach

The unitary transmission approach is that BSs completely transmit a MAC PDU in one frame. BSs transmit a MAC PDU with the same way as BSs transmit a unicast MAC PDU. Therefore, to transmit a MAC PDU for a seamless multicast and broadcast service, BSs may use a DL-MAP IE that is used for the transmission of a unicast MAC PDU.

6.3.14.3.2 Time-slicing transmission approach

<TBD>

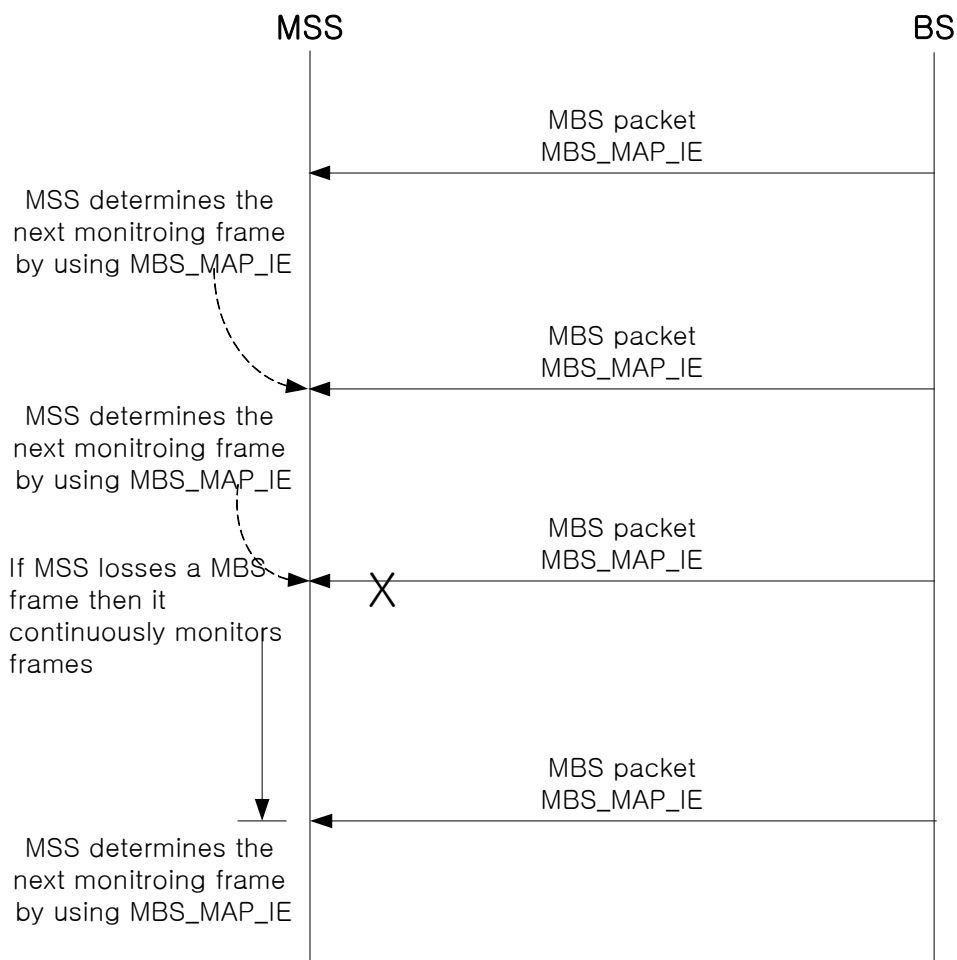
6.3.14.4 Performance enhancement with macro diversity

To increase the receiving performance, the transmission from each BS may be synchronized. That is to say, each BS may use the same CID value, the same security association, the same encrypted PDU, and the same transmission mechanism (symbol, subchannel, modulation, and etc.) for a multicast and broadcast service flow. -The MSS is not necessary to know which BSs are synchronized for the transmission. This makes the BS transmit the same broadcast information to all cells across the network in a synchronized manner such that instead of destructive interference, signals from neighbor cell will add and create a macro-diversity effect.

Such an effect would enable use of much more efficient modulation and coding for the multicast and broadcast content.

6.3.14.5 Power saving operation in MSS's idle mode

To reduce the MSS's power consumption, the BS may notify the number of the frame, which will contain the data for a broadcast



and multicast service flow. If MSS knows the frame number that the BS transmits, MSS may not monitor frames except the frame containing the data for the service flow. However, if MSS does not know the frame number, MSS shall continuously monitor frames until it can know the number of the frame containing the data for the service flow. To support this feature, BS may transmit MBS_MAP_IE in DL-MAP message. (see 8.4.5.3.9).

The MSS determines when to awake from the idle mode and to monitor next frame after reading MBS_MAP_IE. After receiving the frame at the time that the next frame scheduled to be transmitted over the air, the MSS repeats to read the MBS_MAP_IE for next frame to receive. However, if the MSS loses one or a few frames at that time that the next frame is scheduled to be transmitted, then the MSS continuously monitors consecutive frames till MSS reads the MBS_MAP_IE(see figure x.x.x)

6.3.14.6 Multicast and broadcast zone (MBS Zone)

A multicast and broadcast service flow may be transmitted in only a certain region. Also, a different CID or a different SA(Security Association) may be used in a different region for the same multicast and broadcast service flow. A multicast and broadcast zone identifier (MBS_ZONE) is used to indicate a region through which a CID and SA for a broadcast and multicast service flow are valid. If a MSS moves into BSs in the same MBS zone, the MSS is not necessary to re-establish a connection or a virtual connection to monitor the multicast and broadcast service flow. However, if a MSS moves into a different zone, the MSS may be necessary to re-establish a connection or a virtual connection for the multicast and broadcast service flow.

MBS zone may be associated with a CID for a multicast and broadcast service. Therefore, one BS may have multiple MBS zone identifiers. (see 8.4.5.3.10)

[...]

8.4.5.3.9 Multicast and Broadcast Service MAP IE (MBS_MAP_IE)

In the DL-MAP, a BS may transmit DIUC=15 with the MBS_MAP_IE() to indicate when the next data for a multicast and broadcast service flow will be transmitted. The offset value is associated with a CID value, and indicates the frame that the next data will be transmitted in by using the CID value. The offset value is an integer value and the next frame is calculated by adding the current frame number and offset value.

Table 256—Multicast and Broadcast Service MAP IE

| Syntax | Size | Notes |
|---------------|---------|----------------|
| MBS_MAP_IE { | | |
| Extended DIUC | 4 bits | MBS_MAP = 0x05 |
| Length | 4 bits | Length = 0x03 |
| CID | 16 bits | |
| Offset | 8 bits | |
| } | | |

8.4.5.3.10 Multicast and Broadcast Zone IE (MBS_Zone_IE)

In the DL-MAP, a BS may transmit DIUC=15 with the MBS_Zone_IE() to indicate which MBS zone identifier a BS supports. A BS may concurrently support multiple MBS Zones, but only one MBS zone identifier for one broadcast and multicast service shall be used in a BS.

Table 257—Multicast and Broadcast Zone IE

| <u>Syntax</u> | <u>Size</u> | <u>Notes</u> |
|------------------------------|---------------|--|
| <u>MBS_Zone_IE {</u> | | |
| <u> Extended DIUC</u> | <u>4 bits</u> | <u>MBS_MAP = 0x06</u> |
| <u> Length</u> | <u>4 bits</u> | <u>Length in bytes of Unspecified data field</u> |
| <u> MBS Zone Identifier</u> | <u>8 bits</u> | |
| <u>}</u> | | |

[...]

11.13.x MBS zone identifier assignment

The DSA-RSP message may contain the value of this parameter to specify a MBS Zone identifier. This parameter indicates a MBS zone through which the connection or virtual connection for the associated service flow is valid.

| <u>Type</u> | <u>Length</u> | <u>Value</u> | <u>Scope</u> |
|---------------------|---------------|----------------------------|----------------|
| <u>[145/146].29</u> | <u>8</u> | <u>MBS zone identifier</u> | <u>DSA-RSP</u> |