

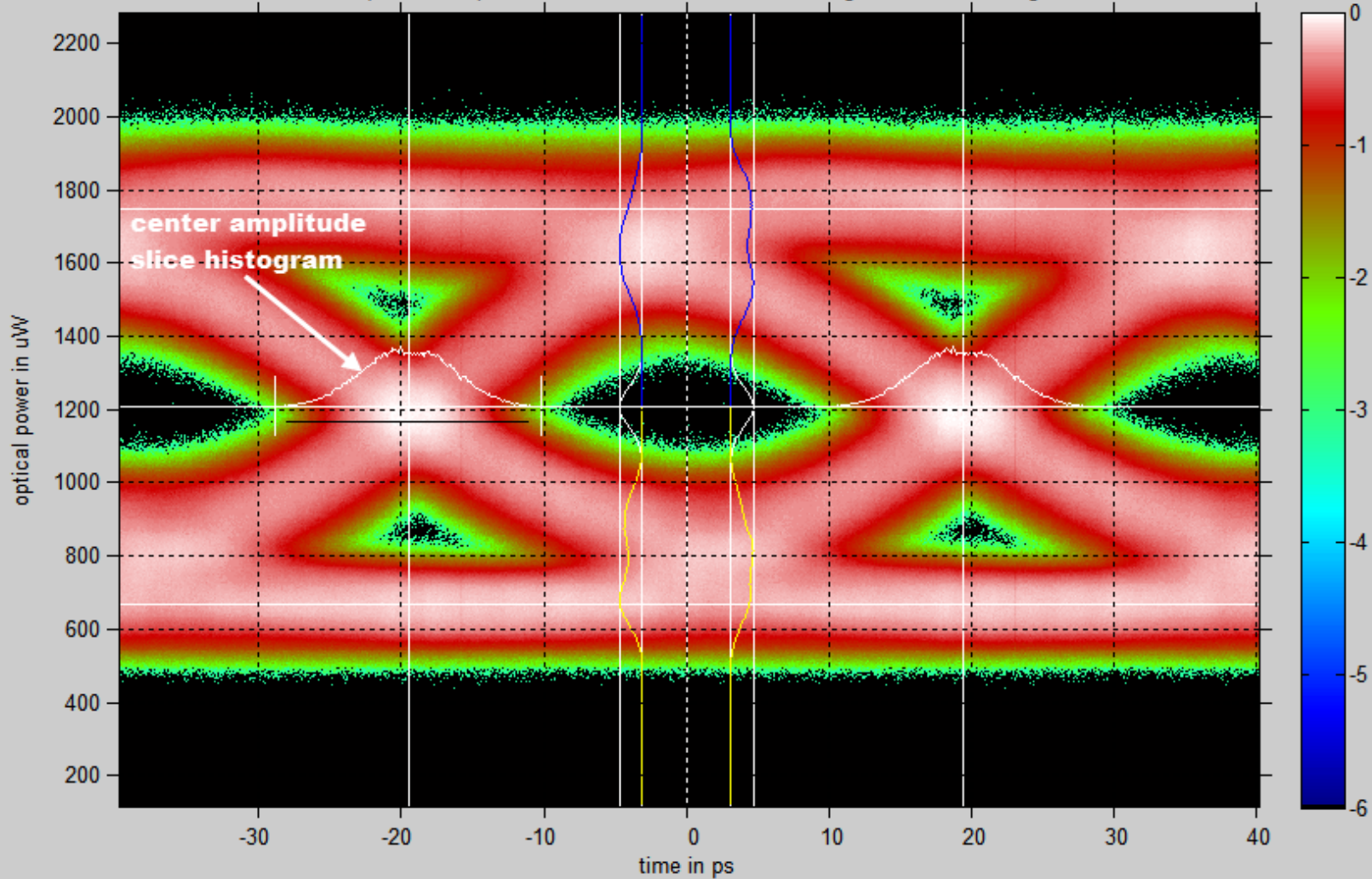
Stressed Rx Input Signal Observations

John Petrilla: Avago Technologies

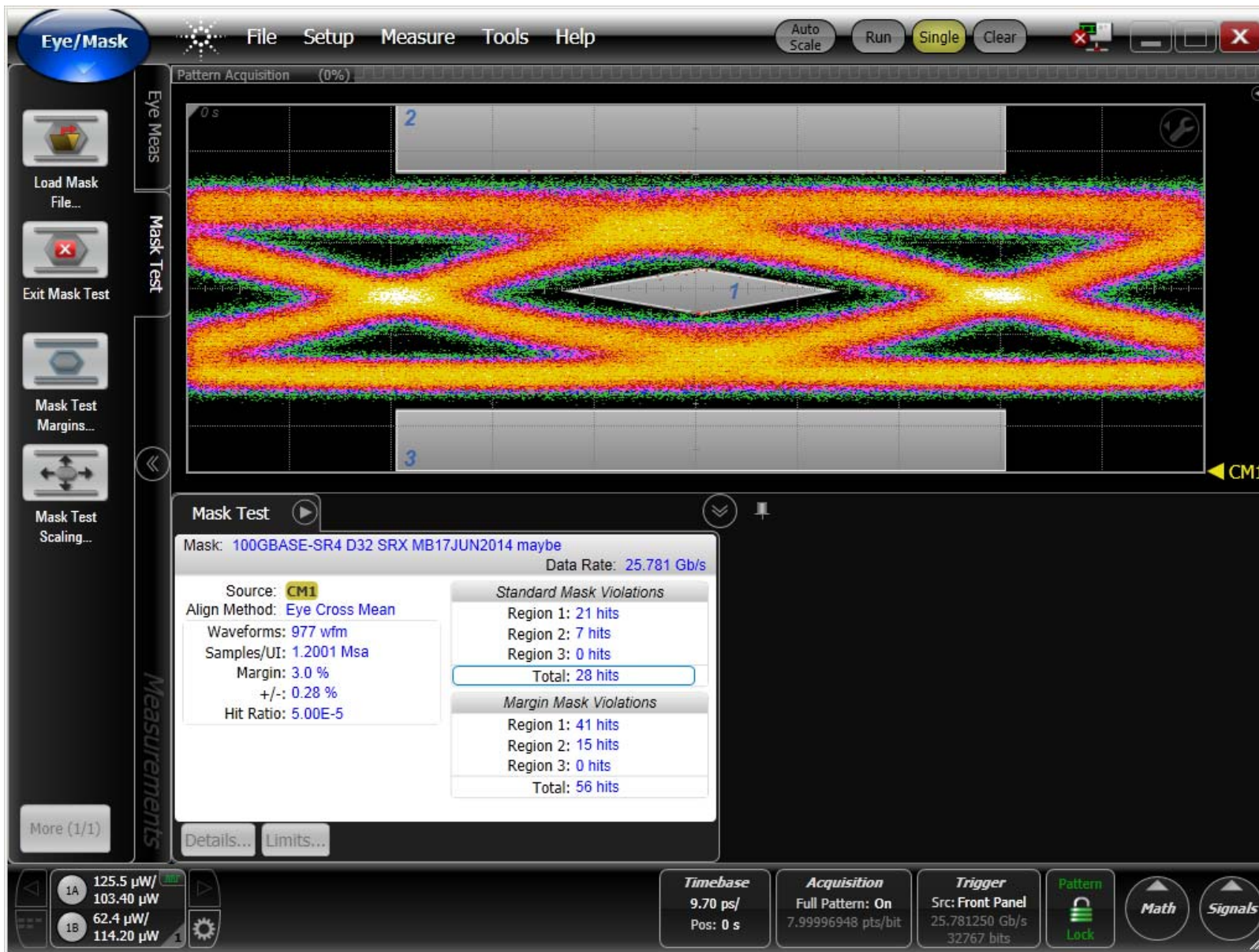
October 2014

Day 1 ~ 2 Mega samples, SEC Calculation

SEC extraction, Input file=srx120m.cgsx
SEC = 4.892 dB_o R= 45.0 uW N= 52.4 uW S= 14.0 uW M= 30.3 uW +/-0.10/0.04 UI histo offset/Width
OMA=1080.0 uW (0.334 dBm) EH=178.6 uW Pave=1208.0 uW Logic0=667.2 uW Logic1=1747.2 uW



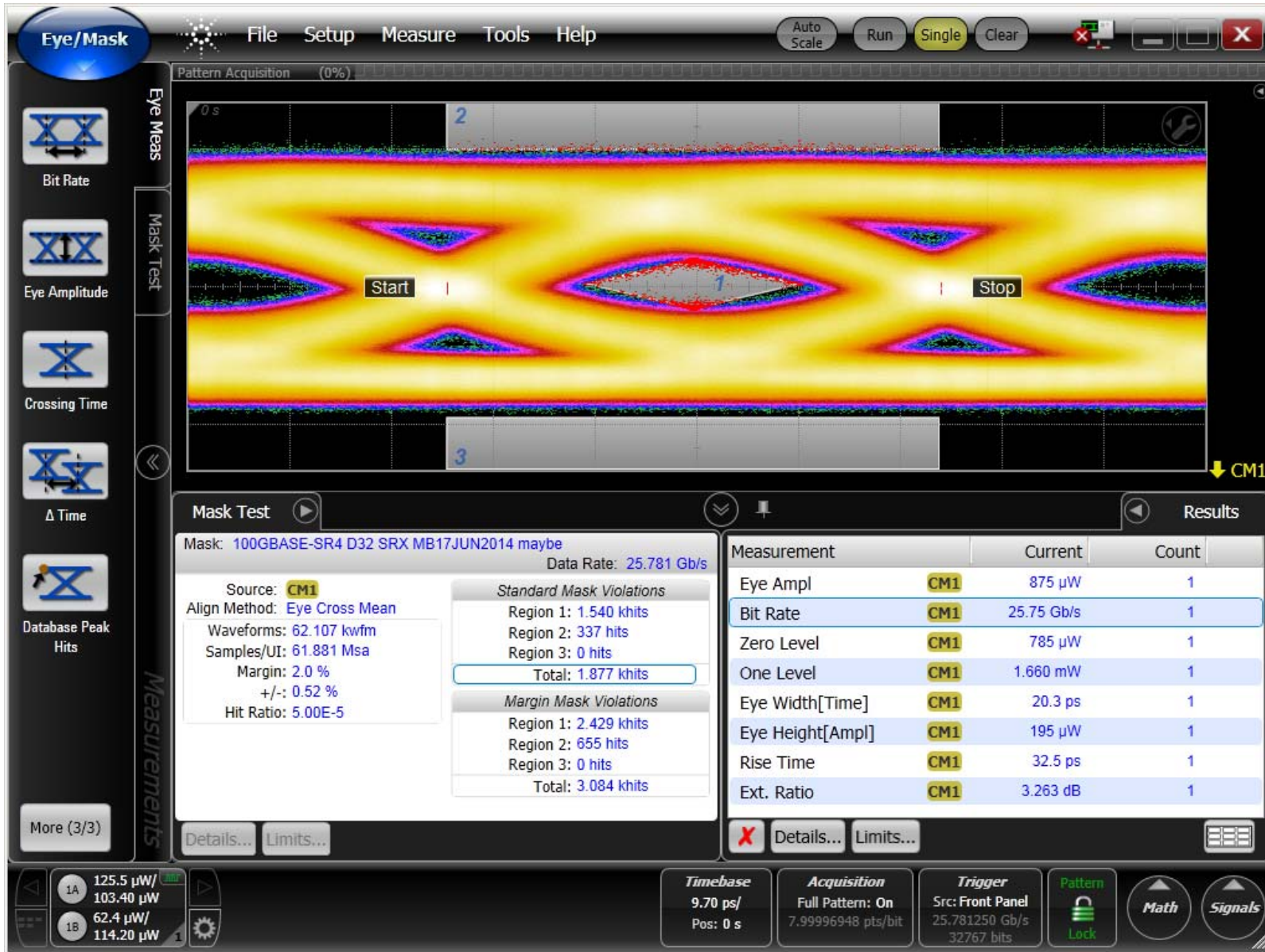
Day 1 ~ 2 Mega samples, SRS Mask Check



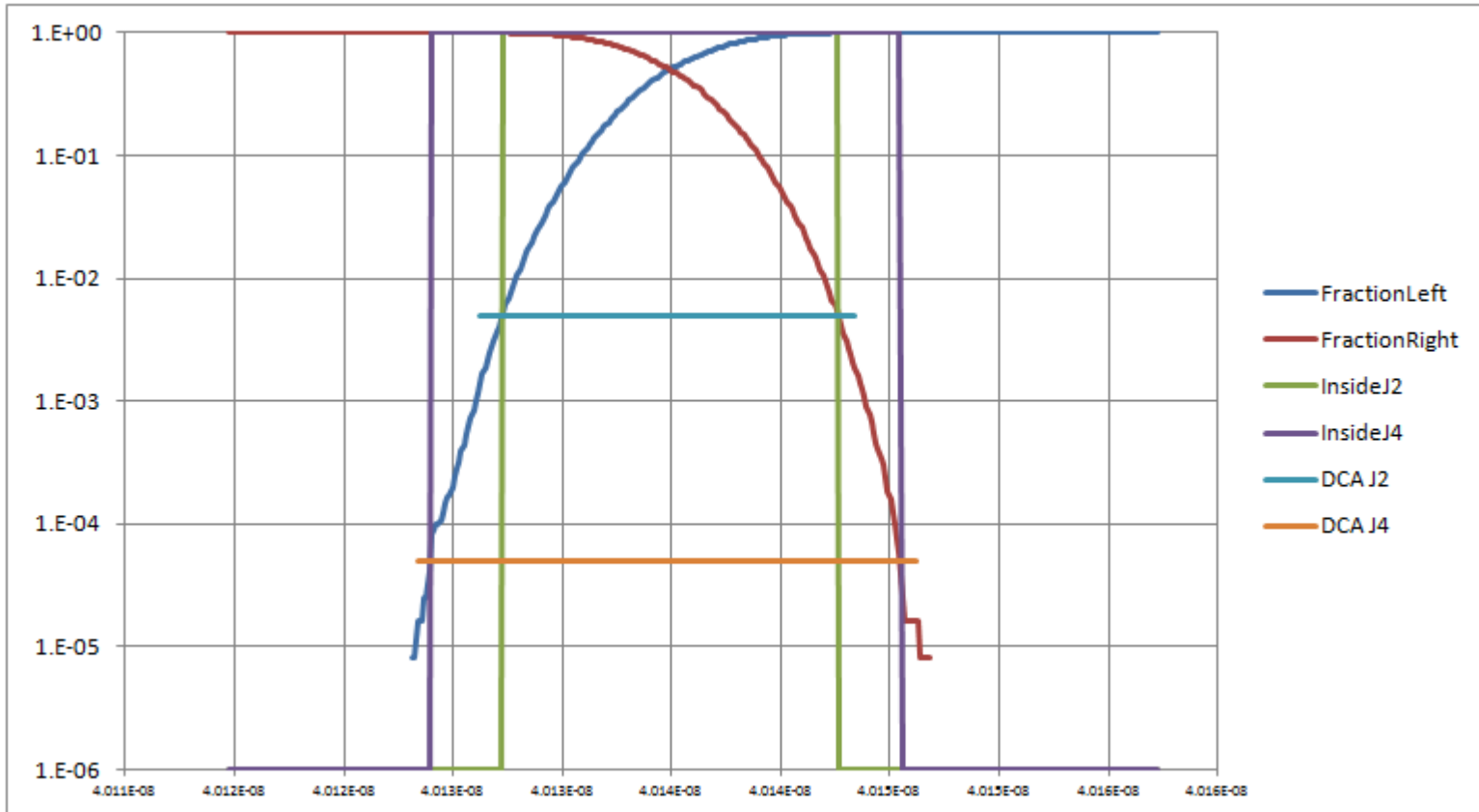
Day 1 ~ 2 Mega samples, SRS Recipe Fit

- Conditions:
- SEC: 4.9dB (target 4.9)
- SECnoJitter: 4.5dB (target >2.5)
- mask margin: 3% (target >0% to {0.28, 0.5, 0.5, 0.33, 0.33, 0.4})
- J2: 0.35UI (target 0.39)
- J4: 0.51UI (target 0.53)
- SJ: 0.05UI pp 10MHz (<0.05UI @10MHz, <5UI @1MHz)) Set to 10 MHz since no CRU
- RJ: 0.5ps rms (no specific target)
- SAI1 : 0 (no specific target)
- SAI2: 0 (no specific target)
- GNG: 0 (no specific target)
- IBS: ? (target < 0.1UI)
- ER: 3.3dB (target 2dB)
- CRU: no (target = yes)
- LPF type: $k1*\sqrt{f}+k2*f$ from transmission lines (target = BT4)
- aggressor OMA: none (target +3)
- OMAcacPattern: PRBS31 (target=8x1,8x0)
- StressPattern: PRBS31 (target=PRBS31 or RSFEC_ESI or valid traffic)

Day 2 ~ 127 Mega samples



Day 2 ~ 127 Mega samples, J2 & J4 Observations



	J2 (seconds)	J2(UI)	J4 (seconds)	J4(UI)
Histo	1.536E-11	0.3960	2.155E-11	0.5555
DCA	1.713E-11	0.4416	2.278E-11	0.5872

Observations

Differences are seen for J2 & J4 values between results reported from the DCA and taken from SEC histogram and between results from Day1 and Day 2.