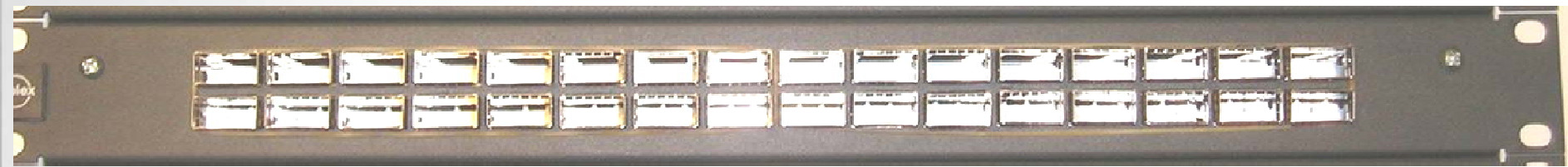




Common MDI requirements

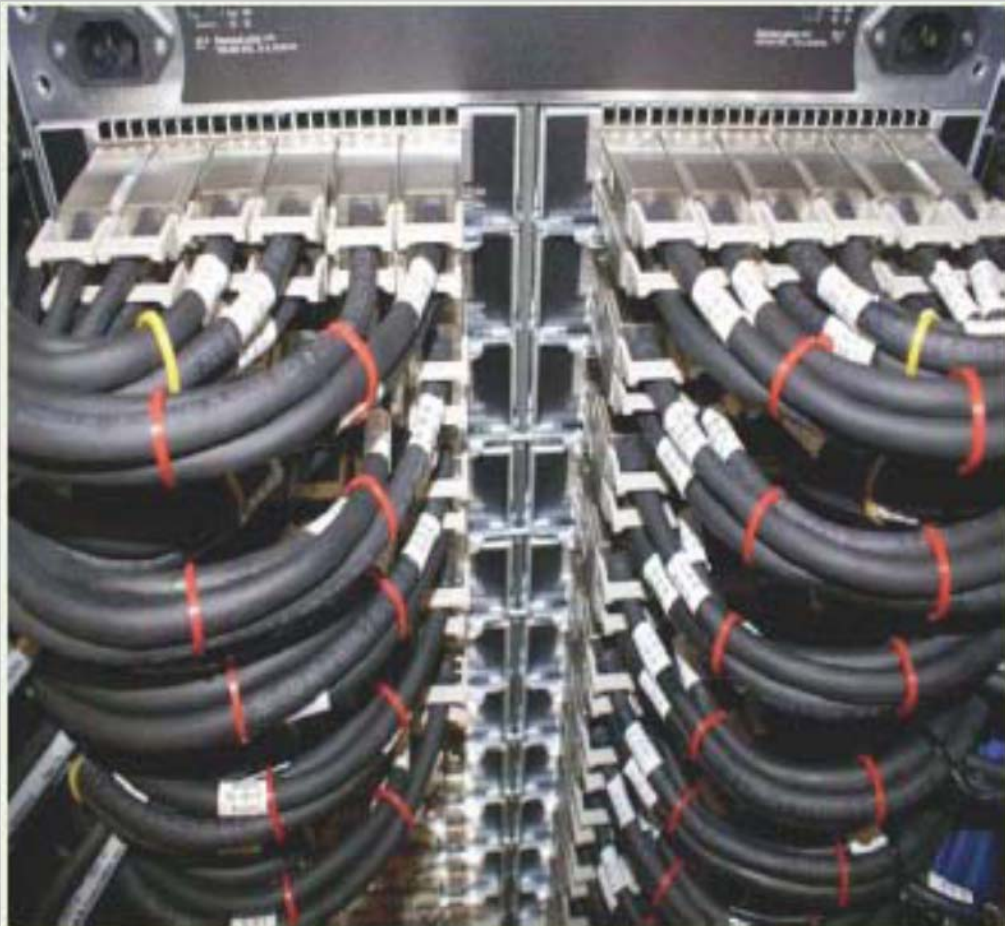
Tom Palkert

36 port 100G Ethernet switch



molex[®]

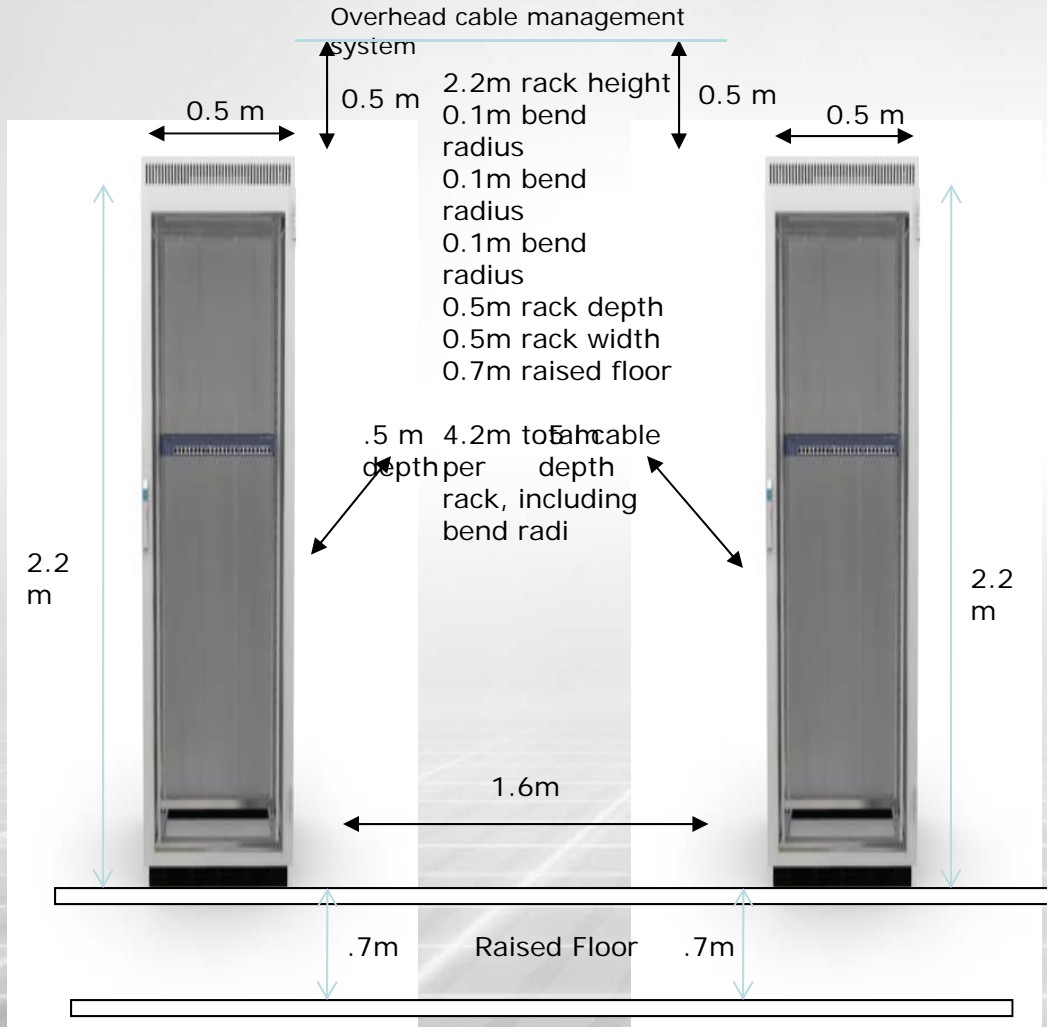
Must support copper



Must support active cables and optics

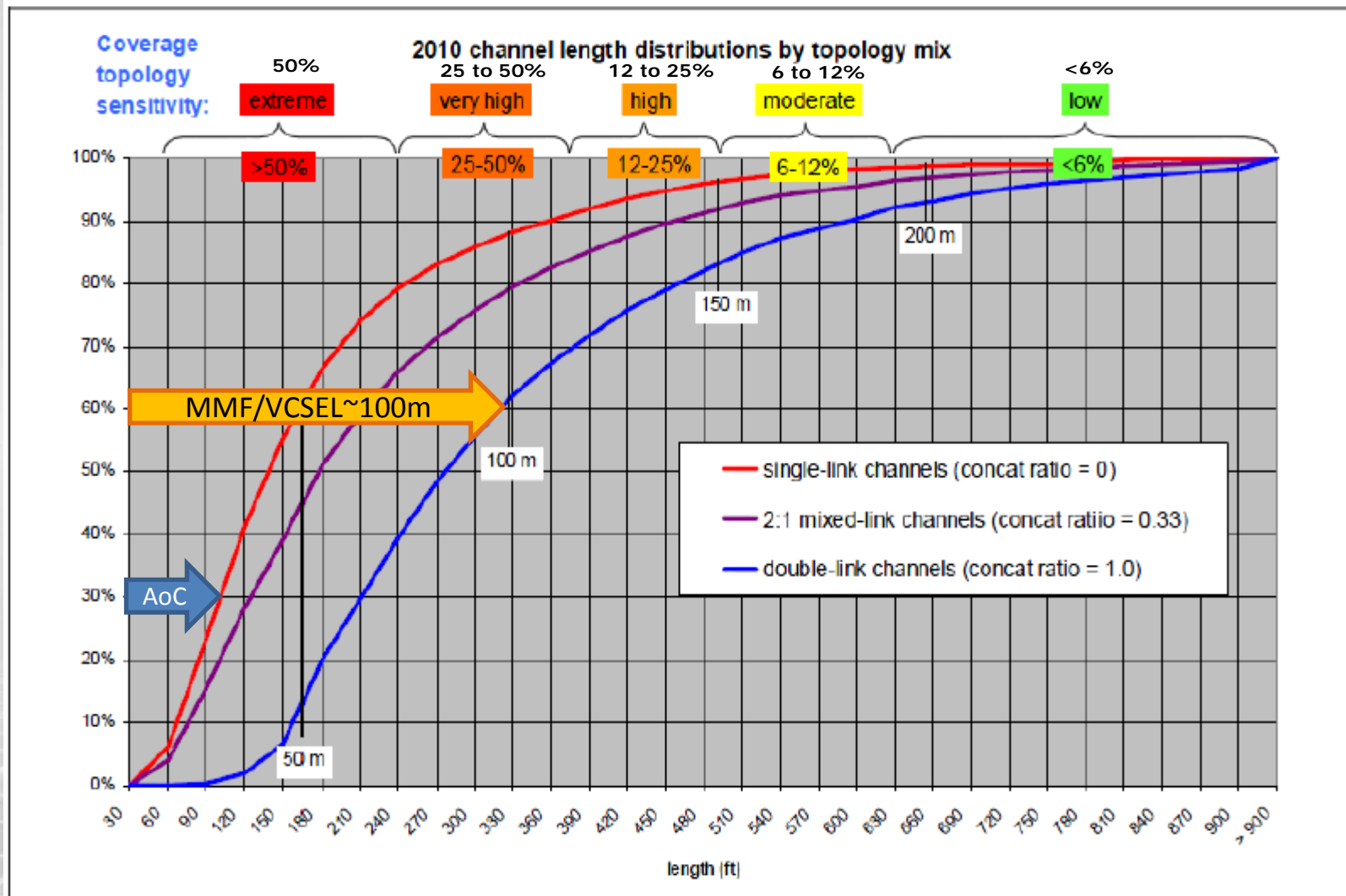


What distances must be supported?



Intra Rack
and
Rack to
Rack

Must support up to 1km for data center applications



Coverage topology sensitivity = (single-link coverage - double-link coverage) / single-link coverage

Why have a common MDI?

- **Allows multiple variants to be used in a single port.**
 - Links can be optimized based on distance, thermals, cost, size etc.
 - i.e. a 30 AWG 3m copper cable could be used for lowest cost or an MR optical module could be used if all ports need the same I/O type for max interop.

What does it mean for bj and the optical study group

- Common host trace loss, connector loss, S parameters should be defined for both non-retimed copper (bj) and retimed optical (SR4, PSM4, LR)
 - i.e. nAUI should have the same host characteristics that are used to specify 100GBASE-CR4

OIF VSR reference channel

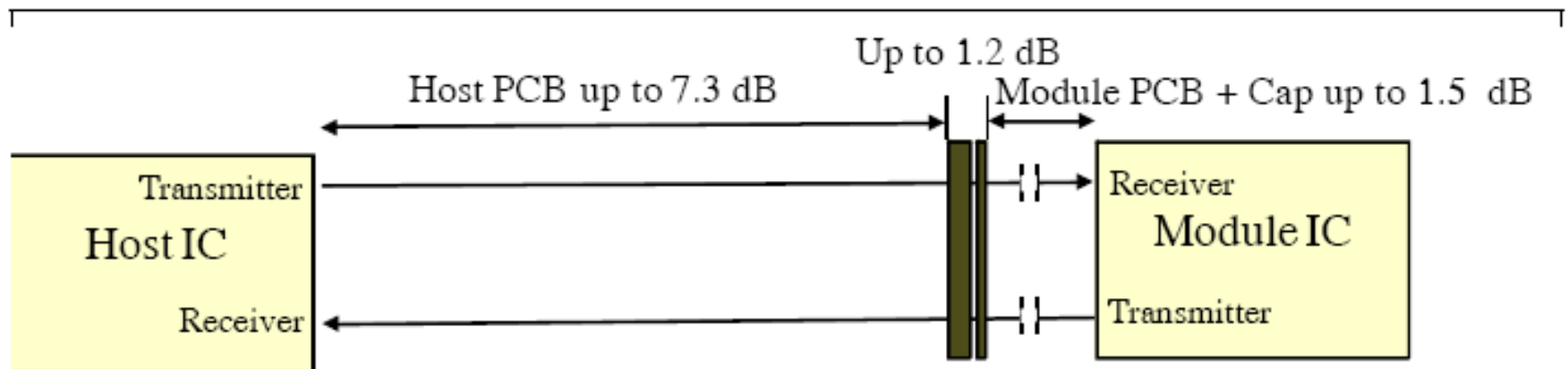


Figure 1-17. CEI-28G-VSR full Channel Reference Model