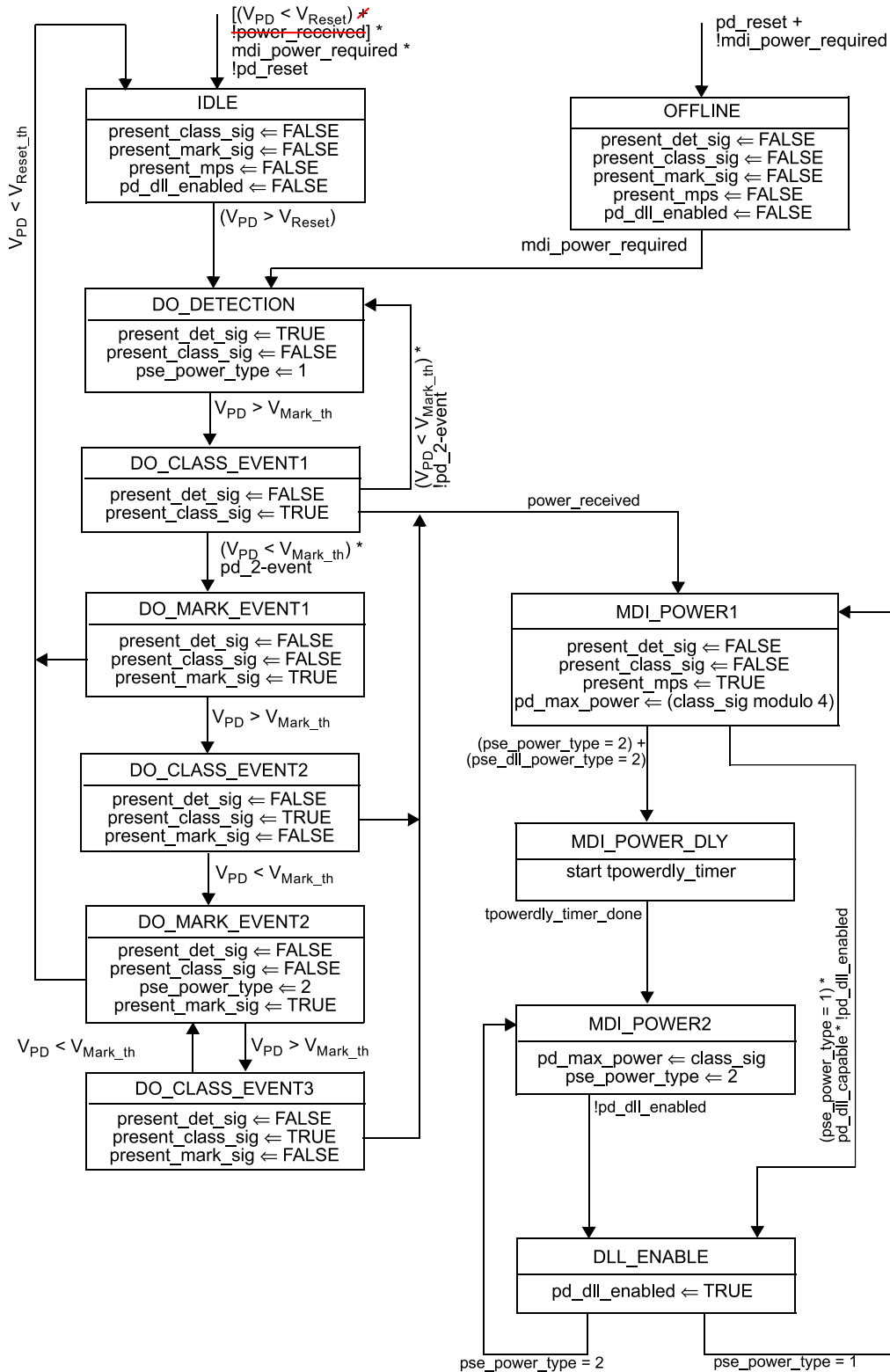


Legacy PD State Machine fix v110

Change Figure 33–31 as follows (changes marked in red):



33.3.7.1 Input voltage

Add at the end of 33.3.7.1 the following paragraph:

The behavior of a PD at a voltage outside of V_{Port_PD} is undefined once the PD reaches the MDI_POWER1 state, until V_{PD} is below V_{Reset} .