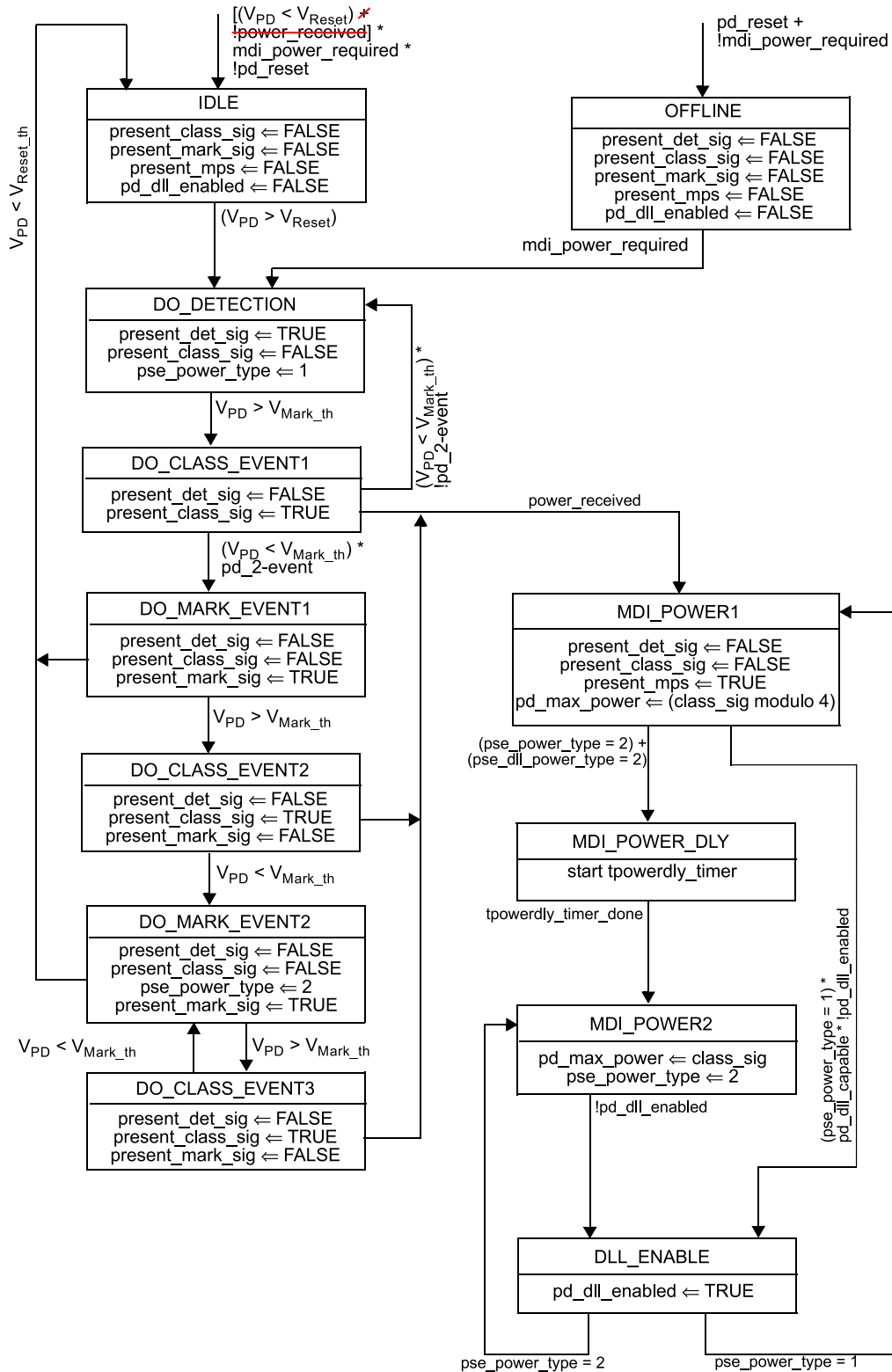


Legacy PD State Machine fix v112

Change Figure 33–31 as follows (changes marked in red):



33.3.7.1 Input voltage

Add at the end of 33.3.7.1 the following paragraph:

The behavior of a PD at a voltage outside of V_{Port_PD} is undefined once the PD reaches **MDI_POWER1**, until V_{PD} falls below V_{Reset} .