

Length Distribution

Wayne Larsen
Commscope

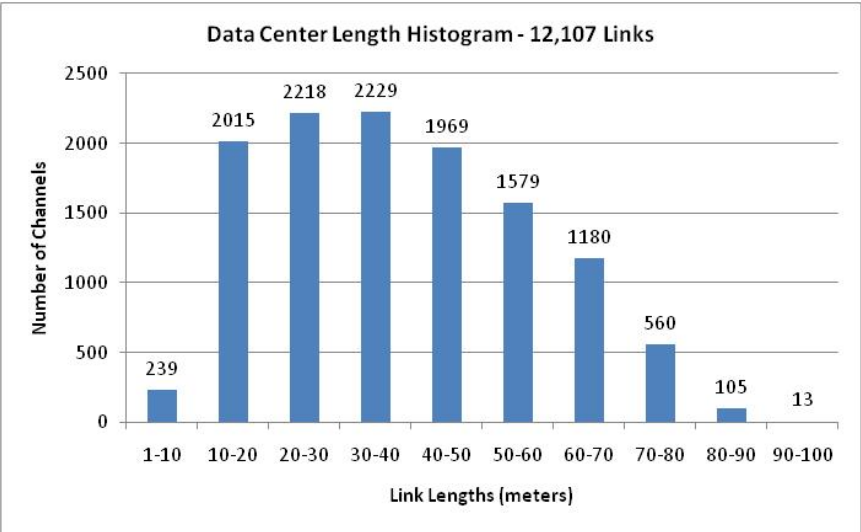
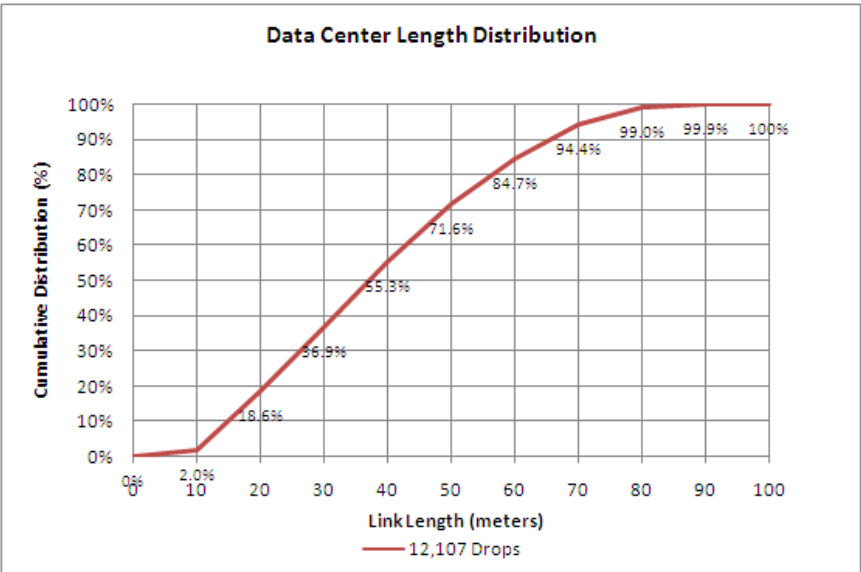
support

- Val Maguire
- Frank Straka
- Ron Nordin
- Bob Wagner
- George Zimmerman
- The Siemon Company
- Panduit
- Panduit
- Panduit
- CME Consulting (Commscope)

Length Distribution

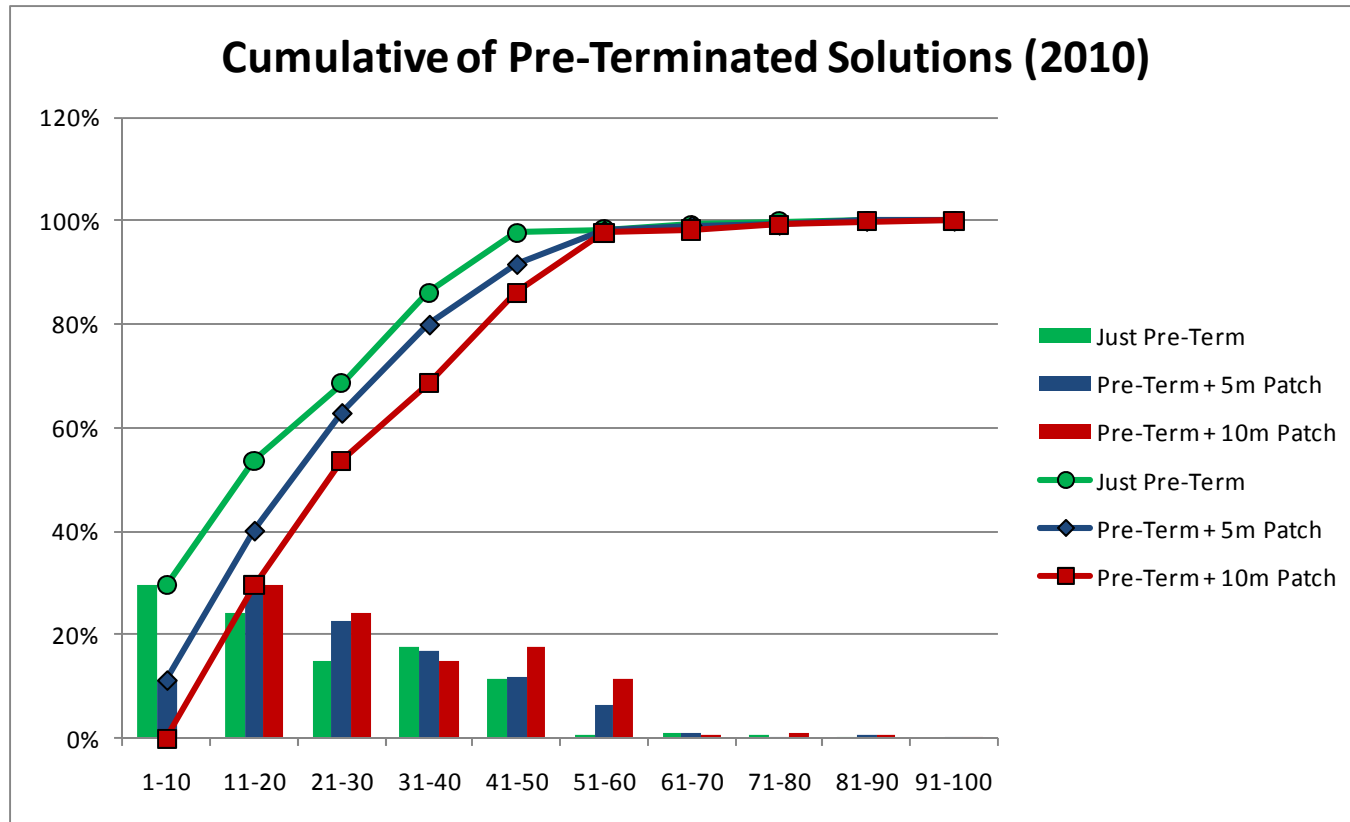
- The intent of this contribution is to review the market information on the lengths of deployed channels that has been contributed to other standards committees in the past.
- It is hoped that this will be helpful in determining the maximum reach of NGBASE-T.
- These reports are for copper only, not fiber.

(Note that this is based on existing installations. Future installations may have different length distributions.)



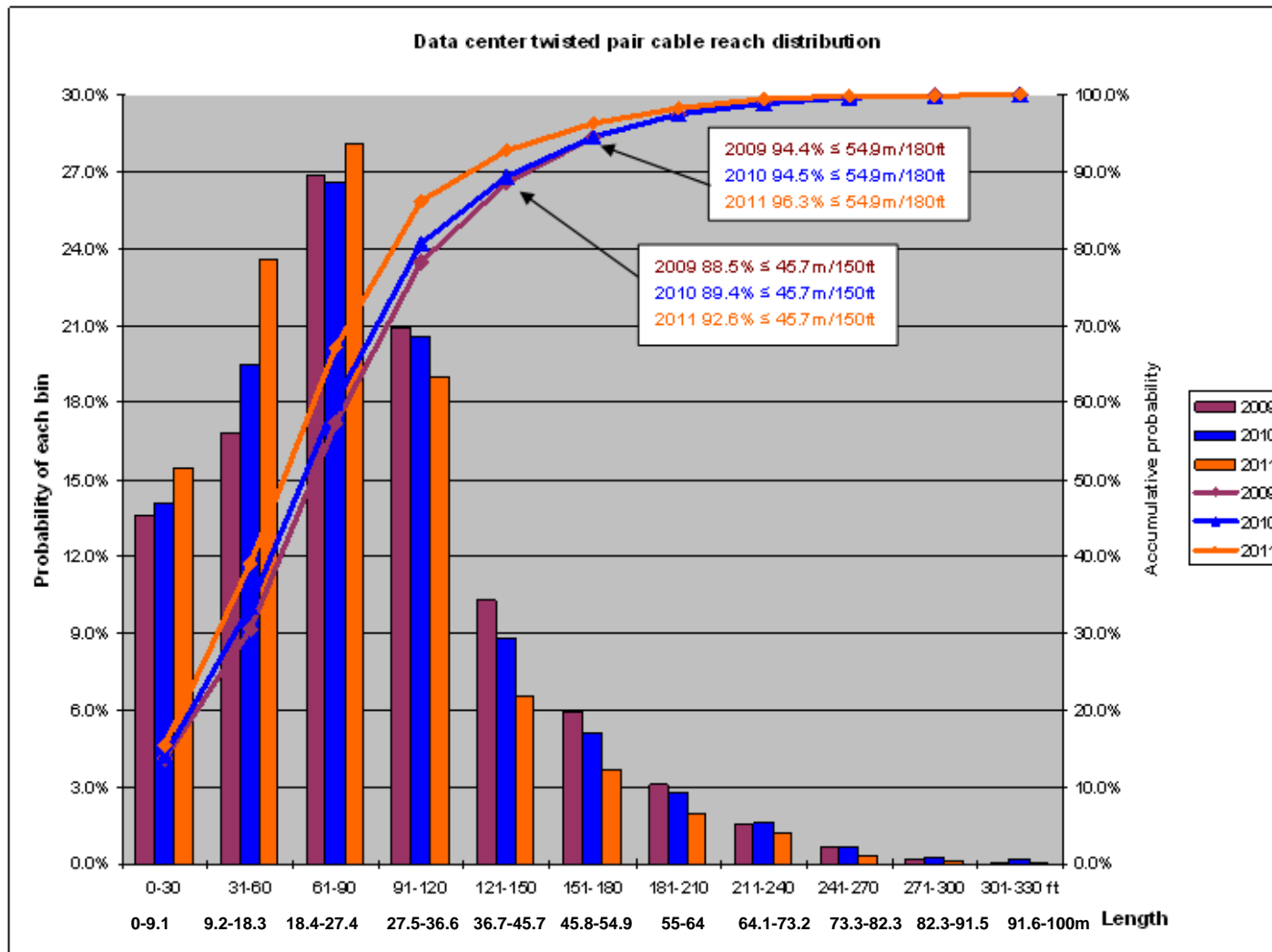
Source: TR42.7-2011-06-049-LengthHistogram
 (Contribution made by Val Maguire of The Siemon Company to TIA in June, 2011)

2010 Pre-Terminated Solutions with Patch Cords Added



Patch cords just added to the total length of the pre-terminated solution

Source: TR42.7-2011-10-070-ChannelLengths
 (Contribution made by Frank Straka of Panduit to TIA October 2011)



Data source: CommScope, Inc.

Conclusion

- A reach of 30-50 m (70 m according to Siemon) will accommodate the majority of the demand.