

IEEE P802.3bz 2.5/5GBASE-T
Enterprise Noise and Use Case Analysis ad hoc

Enterprise Cabling Impulse Noise Test Station

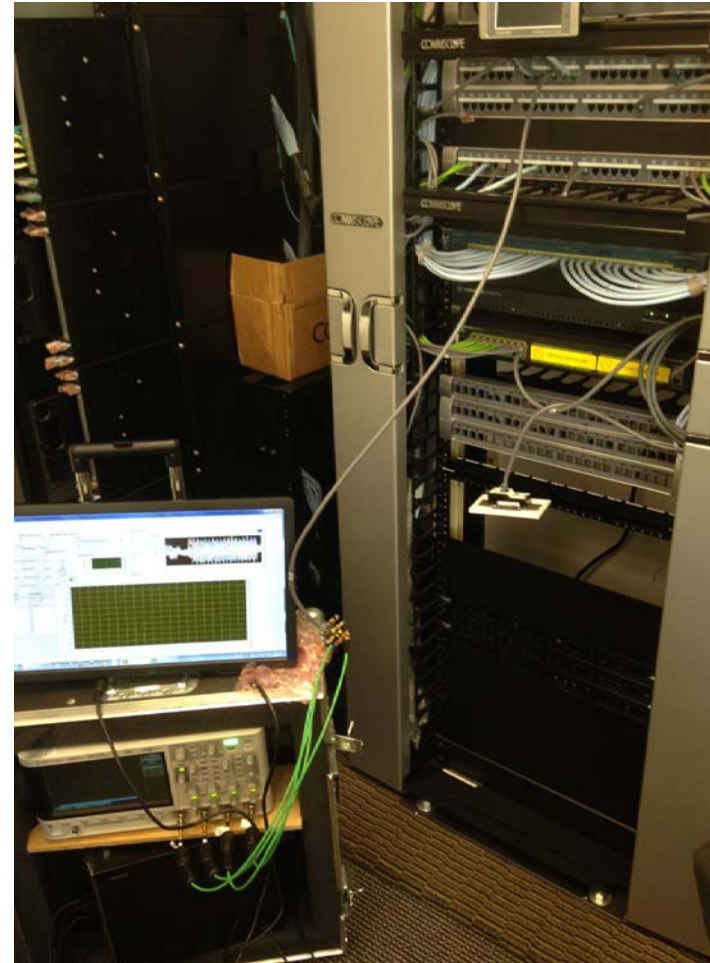
B. Moffitt
CommScope Systems Engineering

Measurements through MDI connector

Startup

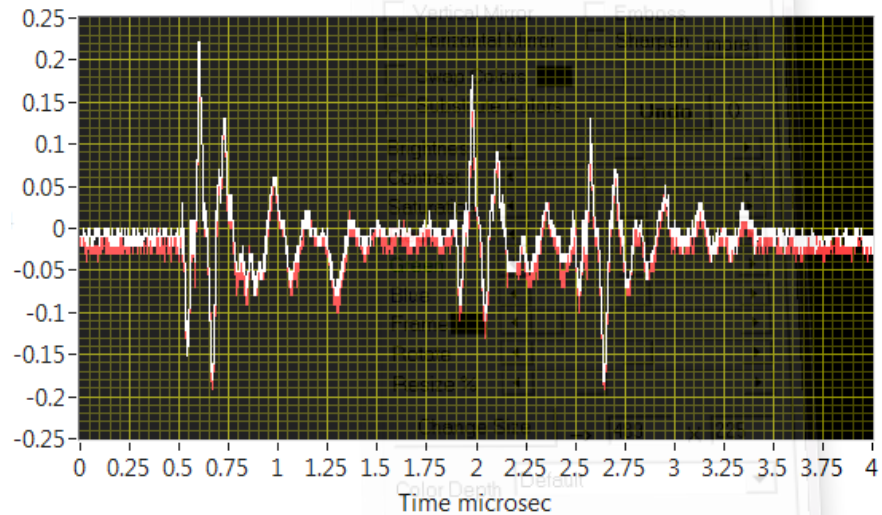
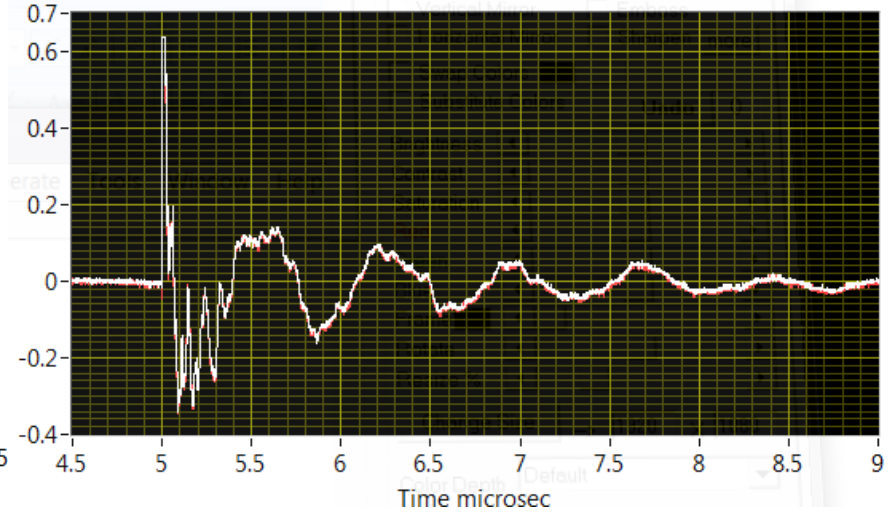
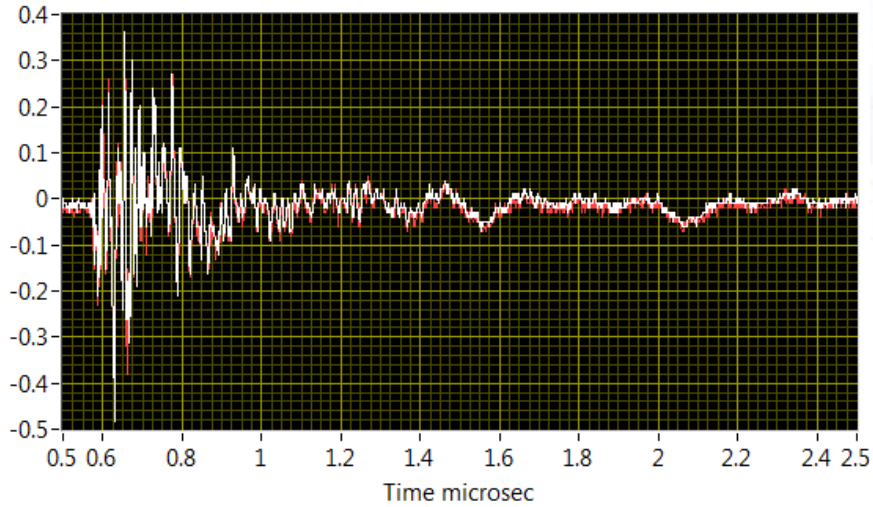


Packaged for travel



MDI connector SMA ports direct into 4 port Oscilloscope
- Side pair and split pair

Typical samples so far:



Just getting started

- * Need to find more sites available for measurement
 - Texas and the east coast are somewhat humid at this point.