



The Effect of DCD at 10G

Steve Krooswyk

Prakash R

Assumptions

3% and 5% DCD is modeled as Bi-Modal TX Jitter. It is the only jitter included in this simulation.

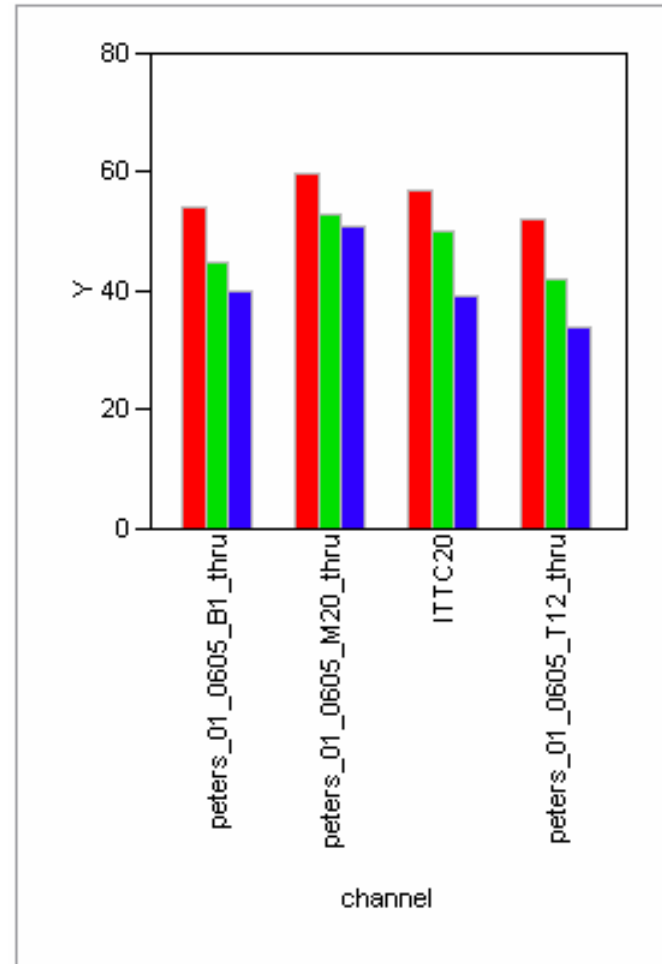
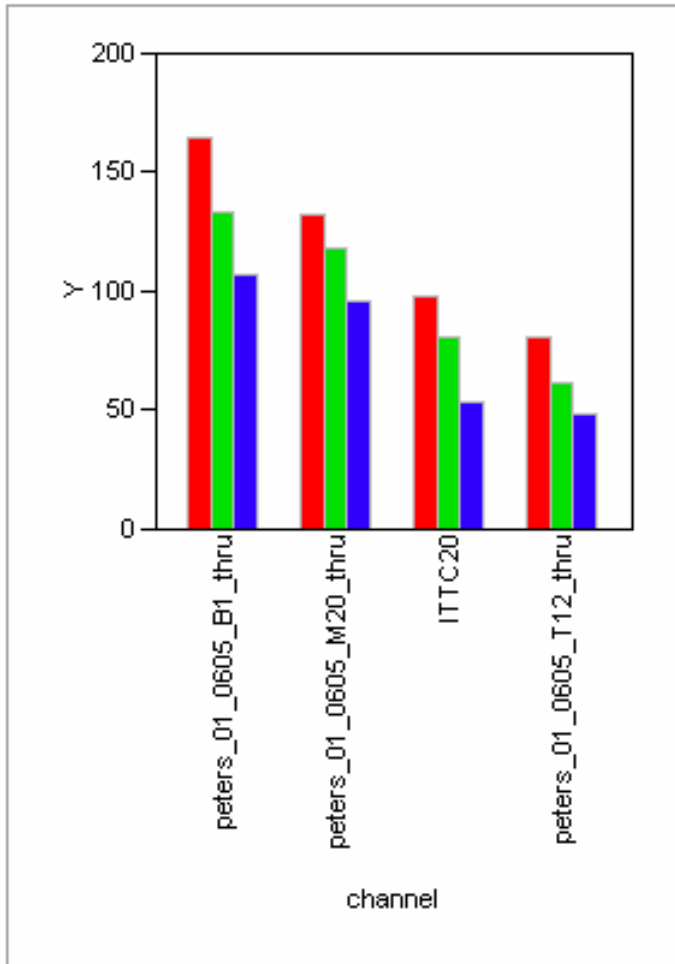
Joint Equalization for FFE and DFE is designed using DFE Script

FFE is modeled at the transmitter instead of the receiver

There is no crosstalk included in this simulation

3 tap FFE and 5 tap DFE

Results 0, 3, and 5% DCD



Pulse Responses

