



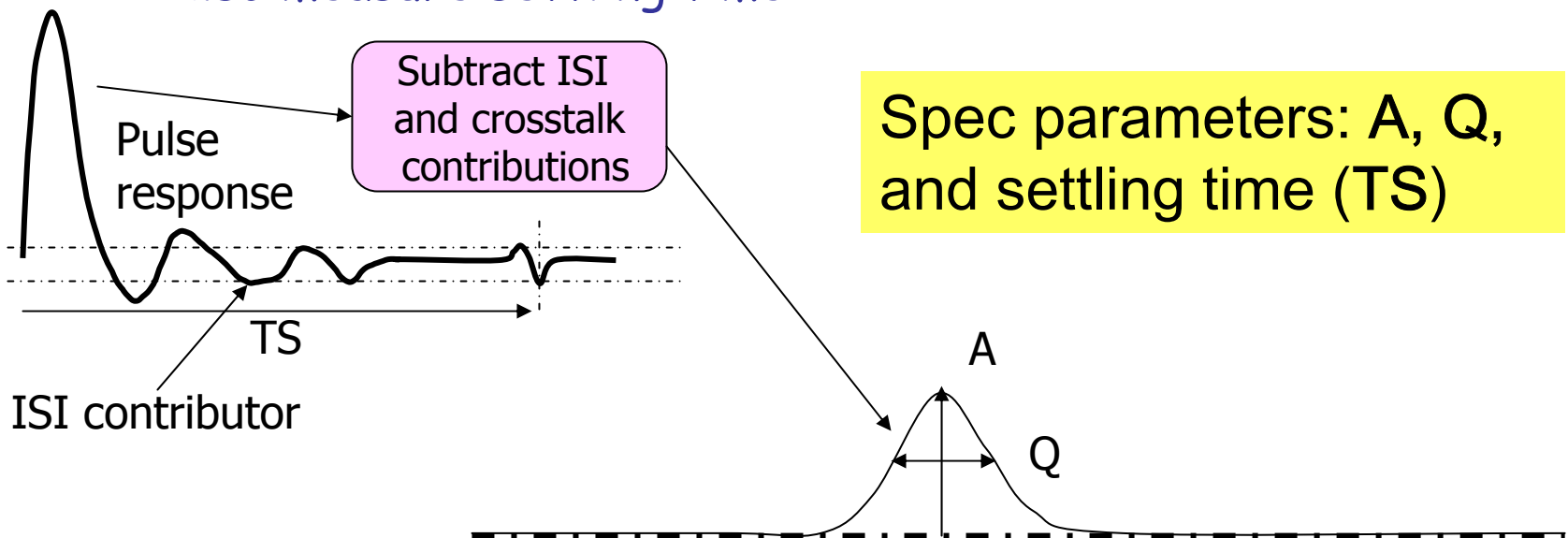
Normative Channel Pulse Response Report Out

04-21-2005

Richard Mellitz, Matt Hendrick,
Steve Krooswyk

It's not an eye : review

- Basic approach ... measure the bump! 😊
 - Utilize the sum of ISI distortion to reduce the "pulse in a window" of the system pulse response.
 - Further reduce the "pulse in the window" with the crosstalk pulse response
 - Also measure settling time

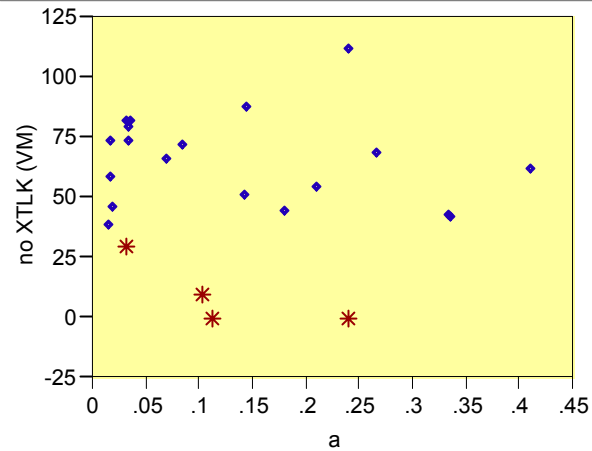


- This is not an eye, but these 3 parameters should correlate to an eye

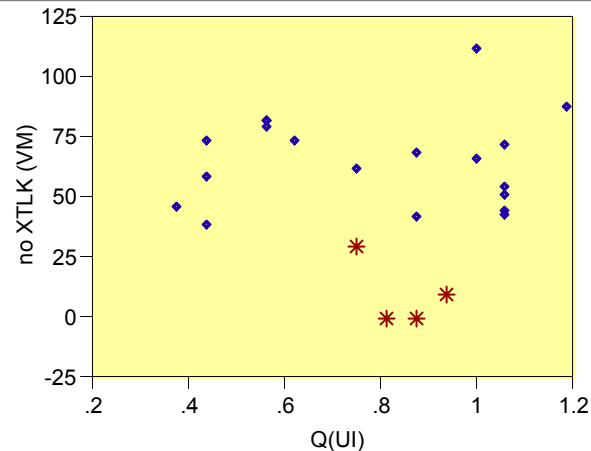
NO Correlation to abler_01_0304

Fit Y by X Group

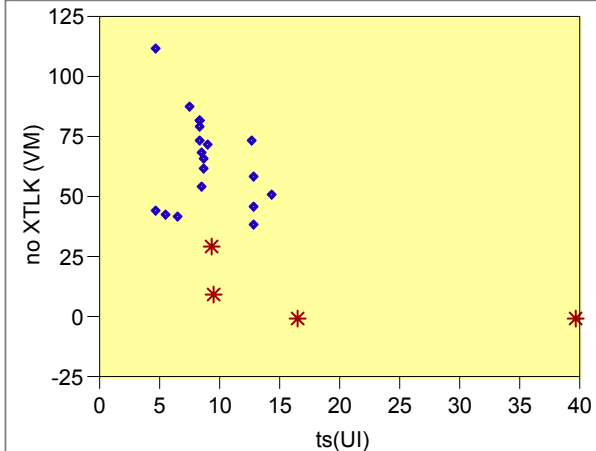
Bivariate Fit of no XTLK (VM) By a



Bivariate Fit of no XTLK (VM) By Q(UI)



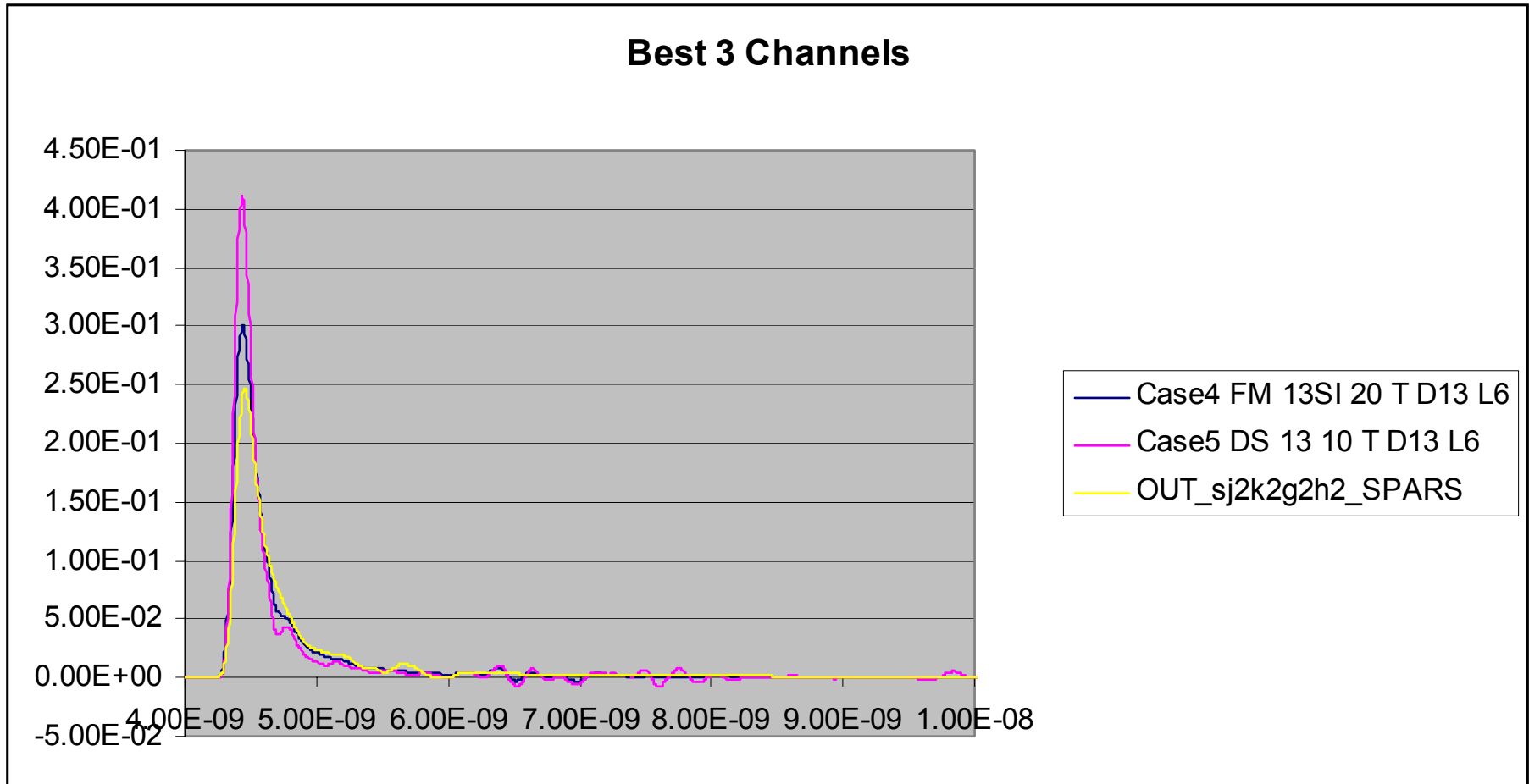
Bivariate Fit of no XTLK (VM) By ts(UI)



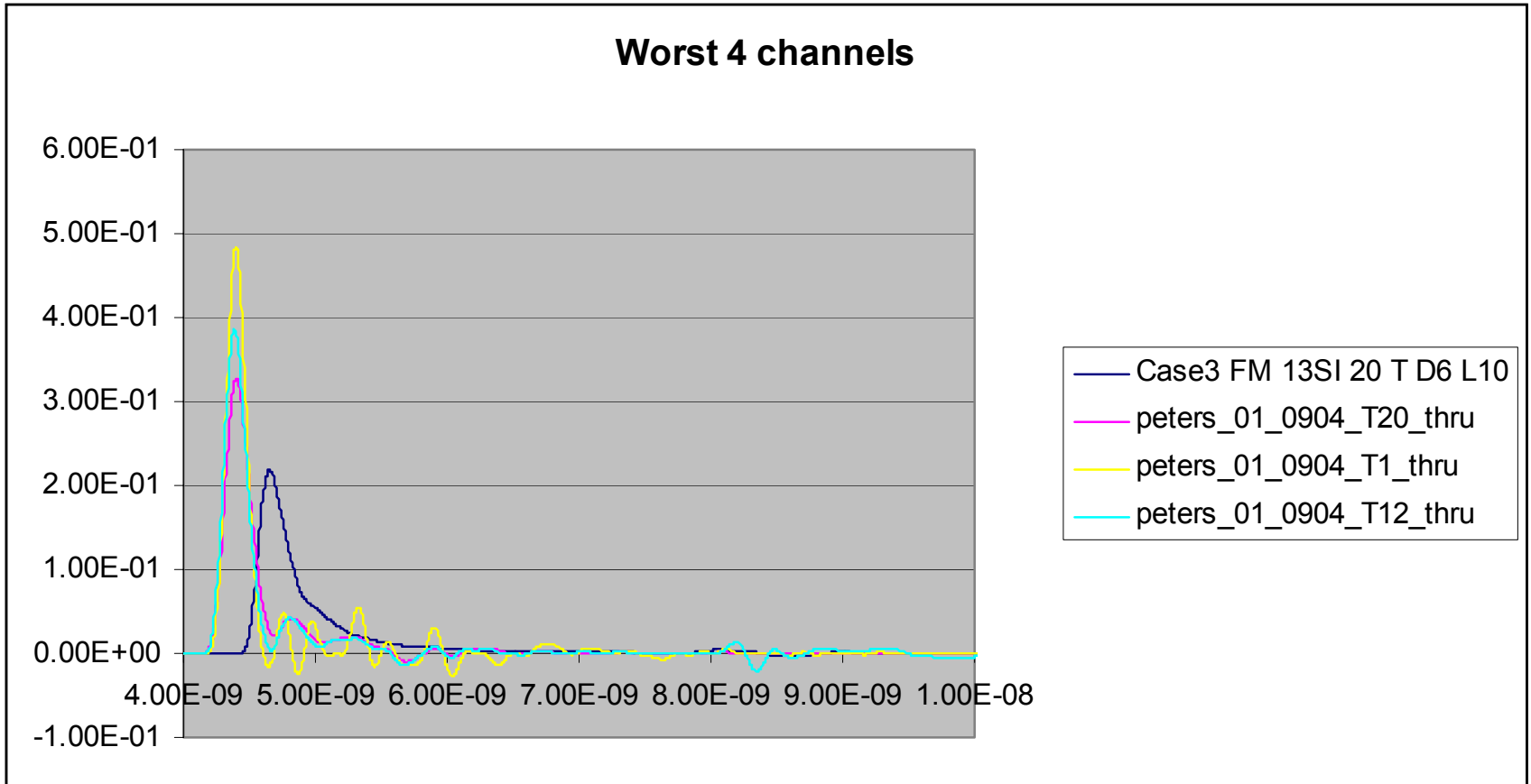
* Is peters0904 T1,T12,T20 and Tyco Case 3

NO crosstalk or DCD but pkg in included

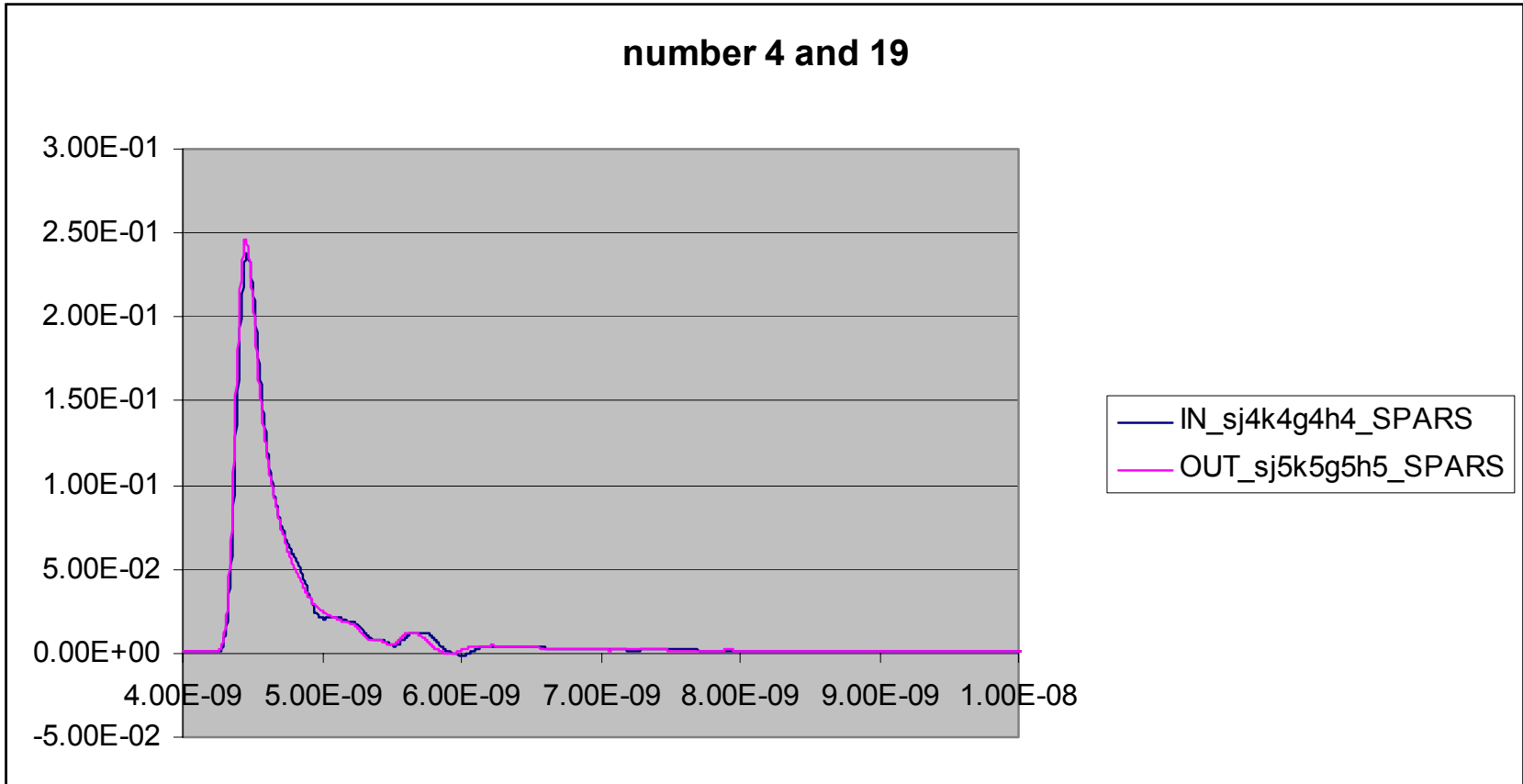
Pulse response for 3 best channels



Pulse response for 3 worst channels

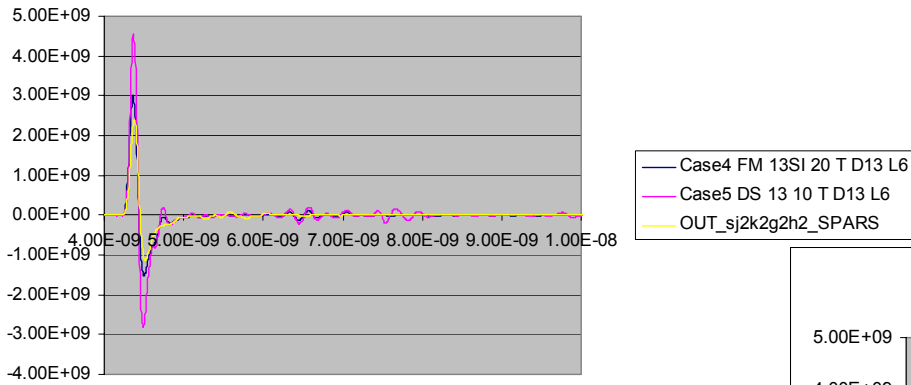


Pulse response between 4 and 19

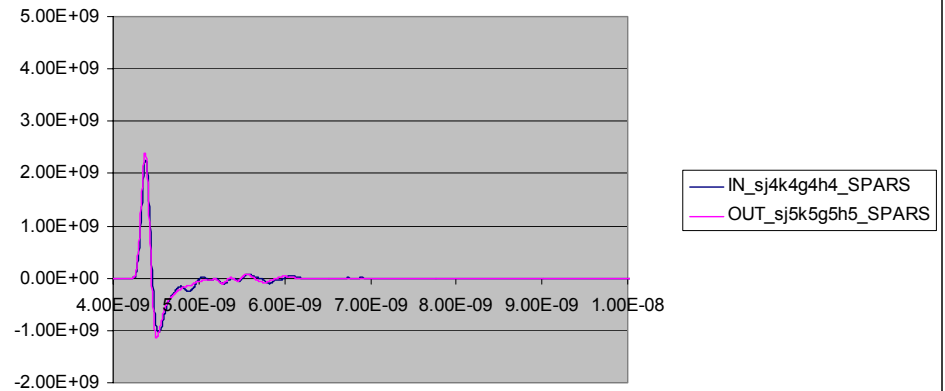


Pulse derivative comparison

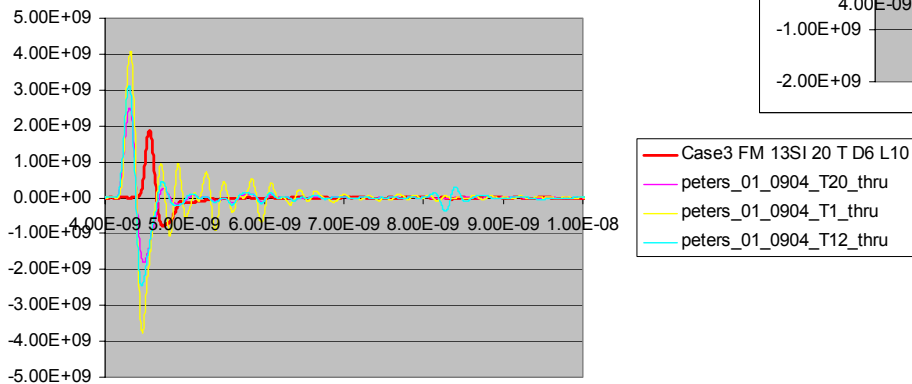
Best 3 Channels dv/dt of pulse



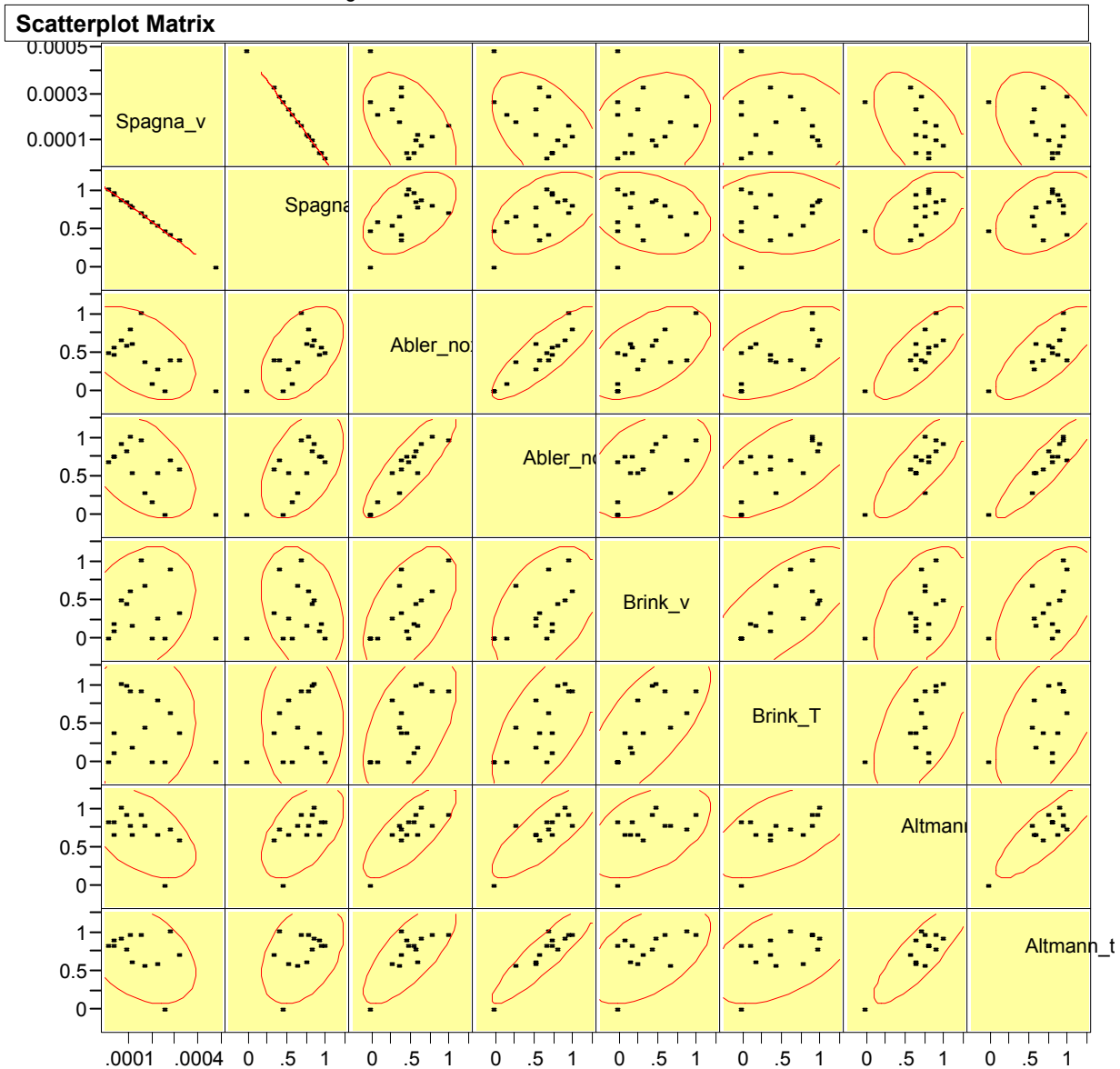
number 4 and 19 dv/dt of pulse



Worst 4 channels dv/dt of pulse



Analysis results differ



Summary

- No Correlation between a , q , and T_s and Abler.
- Lack of a detailed description for how to evaluate channels complicates matters.