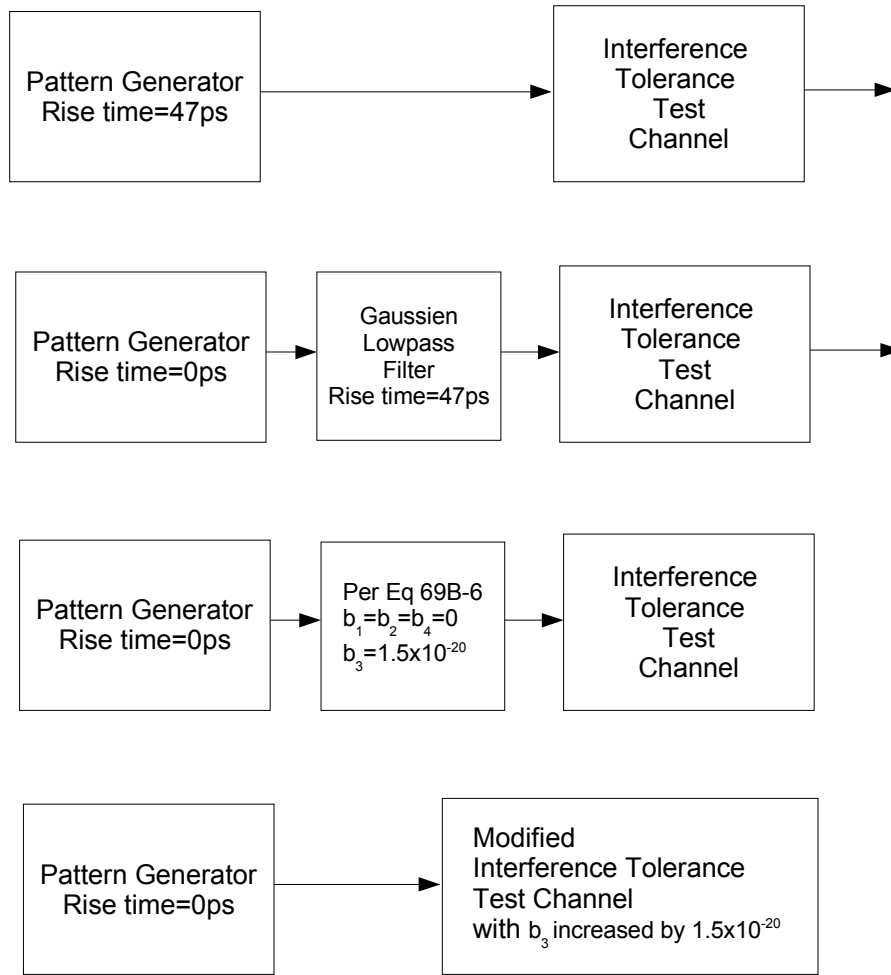


# Allowing for Pattern generator with fast rise time in Interference Tolerance test.

Proposal, if the pattern generator does not have rise time control, shift control to the channel.



## Equivalent Functions

Proposed changes:

Add a note to table 72-10 10GBASE-KR interference tolerance parameters:

If the rise time of the pattern generator is less than 47ps, increase the parameter  $b_3$ , used to define the interference tolerance test channel (defined in Table 69B-1) by the amount

$$\text{increment of } b_3 = \frac{1.5 * 10^{-20} * (47 \text{ ps}^2 - (\text{generator rise time})^2)}{(47 \text{ ps}^2)}$$

Add a note to table 71-7 10GBASE-KX4 interference tolerance parameters:

If the rise time of the pattern generator is less than 130ps, increase the parameter  $b_3$ , used to define the interference tolerance test channel (defined in Table 69B-1) by the amount

$$\text{increment of } b_3 = \frac{11.6 * 10^{-20} * (130 \text{ ps}^2 - (\text{generator rise time})^2)}{(130 \text{ ps}^2)}$$

Add a note to table 70-7 1000BASE-KX interference tolerance parameters:

If the rise time of the pattern generator is less than 320ps, increase the parameter  $b_3$ , used to define the interference tolerance test channel (defined in Table 69B-1) by the amount

$$\text{increment of } b_3 = \frac{69.3 * 10^{-20} * (320 \text{ ps}^2 - (\text{generator rise time})^2)}{(320 \text{ ps}^2)}$$