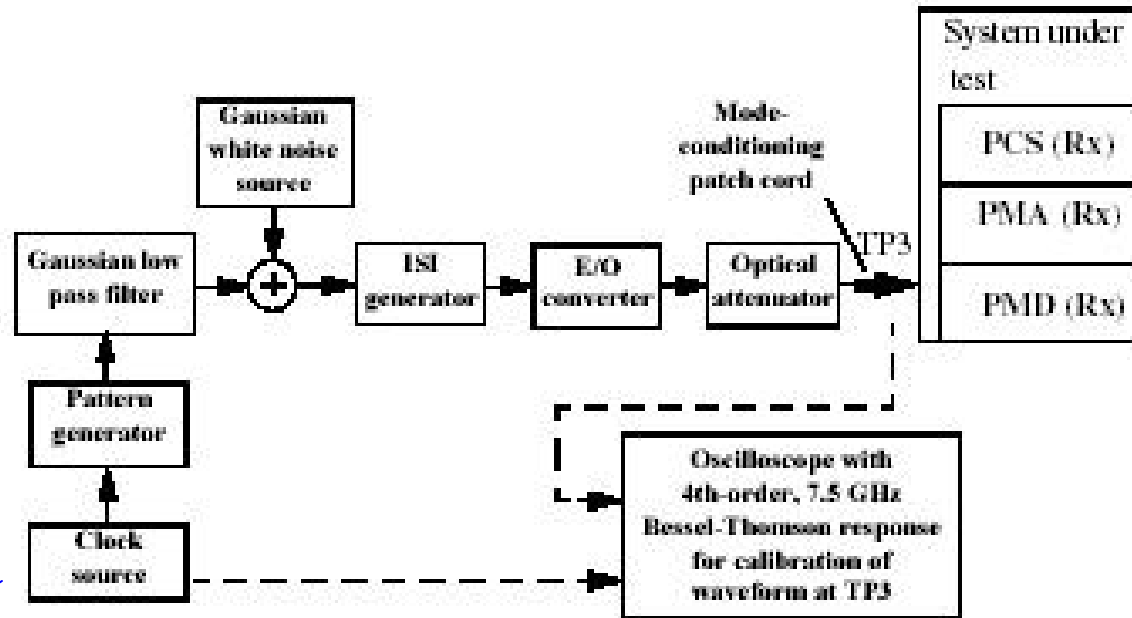




Rx jitter test options

- In all cases, add/adjust SJ until tester jitter, as seen through 4 MHz HPF, matches TP2 allowance (0.033 UI rms)
- Primary options
 1. Add SJ to comprehensive test to achieve 0.033 UI rms (~0.082 UI pk-pk SJ)
 2. Adjust magnitude of SJ in JT test to achieve 0.093 UI pk-pk
- Secondary options
 1. Full frequency template or selected points
 2. Describe jitter magnitude in actual values or as viewed through a 4 MHz HPF
- Potentially adjust TP2 allowance downward to ~0.03 UI rms and scale other magnitudes above

Primary option 1: Addition of SJ to TP3 comprehensive tester



Sinusoidally modulated clock source

Figure 68-10—Reference measurement configuration for comprehensive stressed receiver sensitivity and overload test

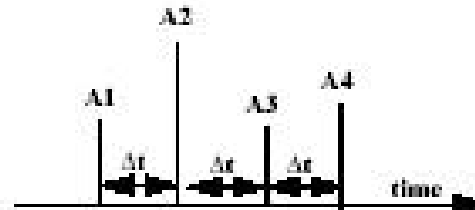


Figure 68-11—Illustration of parameters defining ISI generator impulse responses