

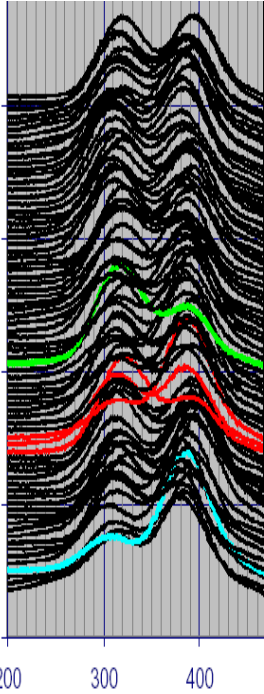
The need for split symmetric stressor

Paul Kolesar

IEEE 802.3aq

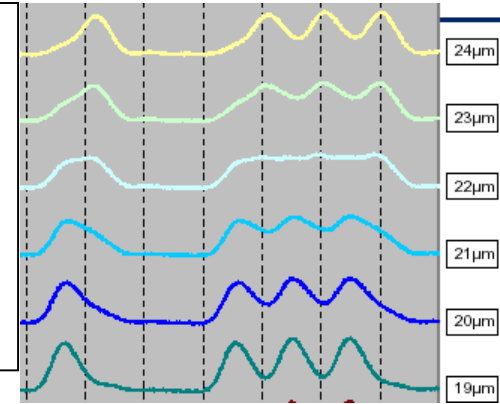
March, 2006

Dynamic channel operation



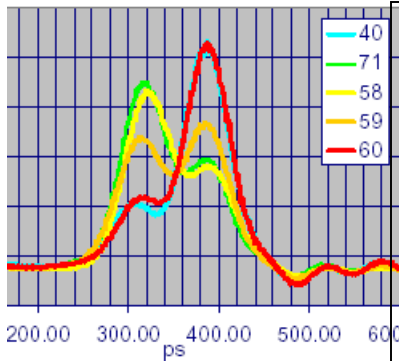
Near-center launch shows sensitivity to fiber movement: pre-cursor to split-symmetric to post-cursor waveforms sequentially generated

Offset launches on fiber with “kinked” DMD show similar behavior with variation in offset



Kropp_1_1004

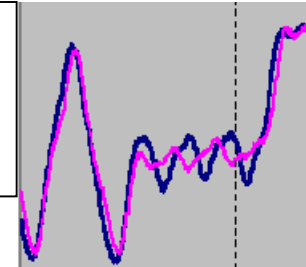
While split-symmetric response may be a rare long-term operating condition, tolerating split-symmetric pulses is essential to operation in dynamic channel.



Isolation of successive quasi-static states 58, 59, 60 show all three pulse shapes, including deeply notched split-symmetric response

King_1_1104

Kinked DMD fibers show sensitivity to polarization changes



Kropp_1_1004