

NOTE: For PHYs which do not support the fast retrain capability the variable fast_retrain_flag is set to FALSE

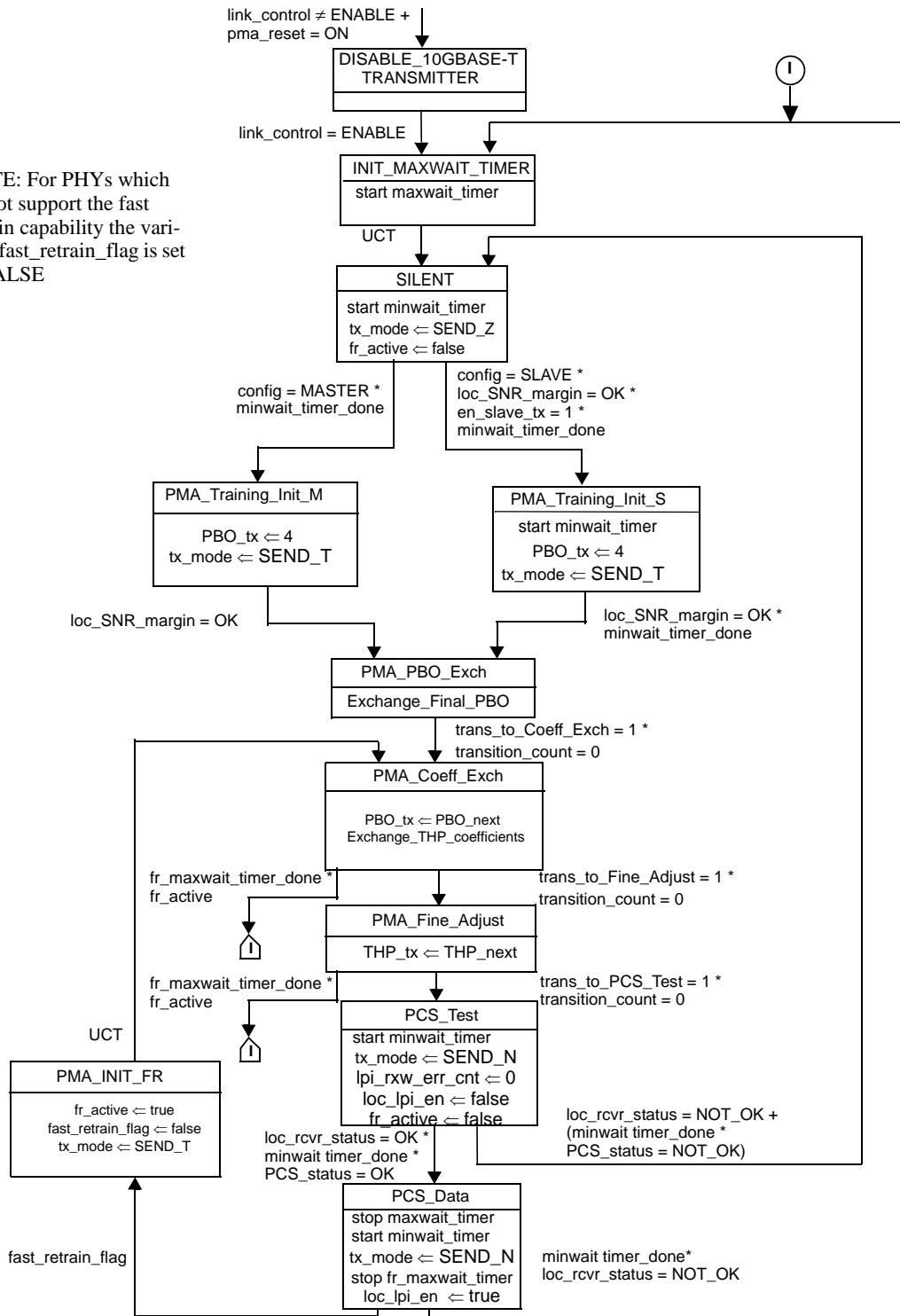


Figure 55-24—PHY Control state diagram

55.4.6.5 Fast retrain state diagram

Insert a new subclause 55.4.6.5 after subclause 55.3.6.4, containing Figure 55-27b, as shown below

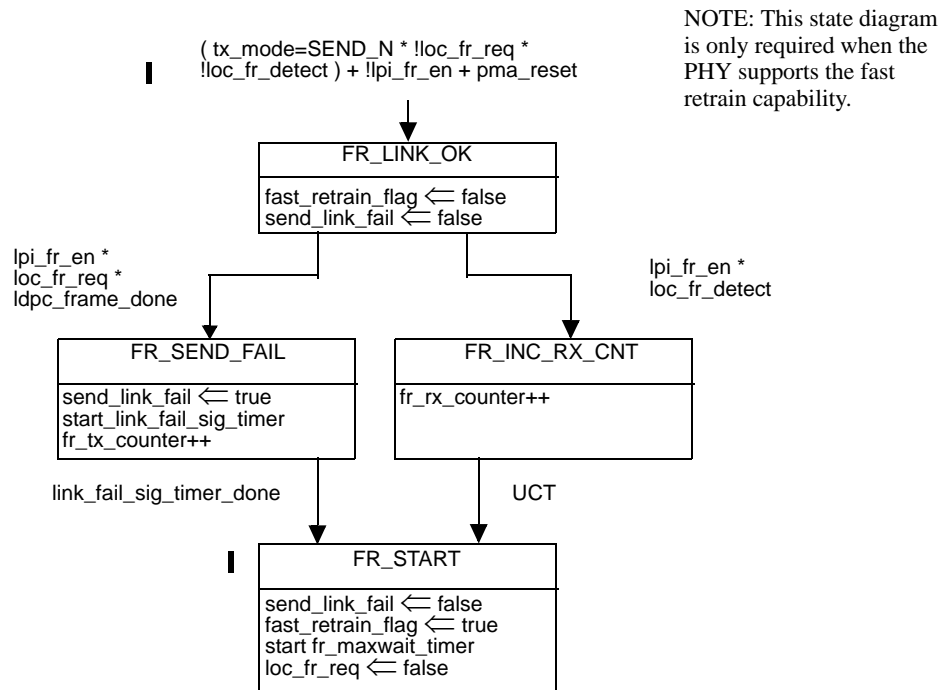


Figure 55–27b—Fast retrain control state diagram

55.5.3.5 Transmit clock frequency

Insert the following text after the existing text in 55.5.3.5:

When the transmitter is in the LPI transmit mode or when the receiver is in the LPI receive mode the transmitter clock short term rate of frequency variation shall be less than 0.1 ppm/second. The short term frequency variation limit shall also apply when switching to and from the LPI mode.

55.6 Management interfaces

10GBASE-T makes extensive use of the management functions that may be provided by the MDIO (Clause 45), and the communication and self-configuration functions provided by Auto-Negotiation (Clause 28). Additional Auto-Negotiation requirements are set forth within this subclause.