

Corner Case Discussion

IEEE802.3az Figure 40-15b

Mario Traeber



Supporters

- Chadha, Mandeep (Vitesse)
- Chou, Joseph (Realtek)
- Grimwood, Mike (Broadcom)
- Healey, Adam (LSI)
- Parnaby, Gavin (Solarflare)

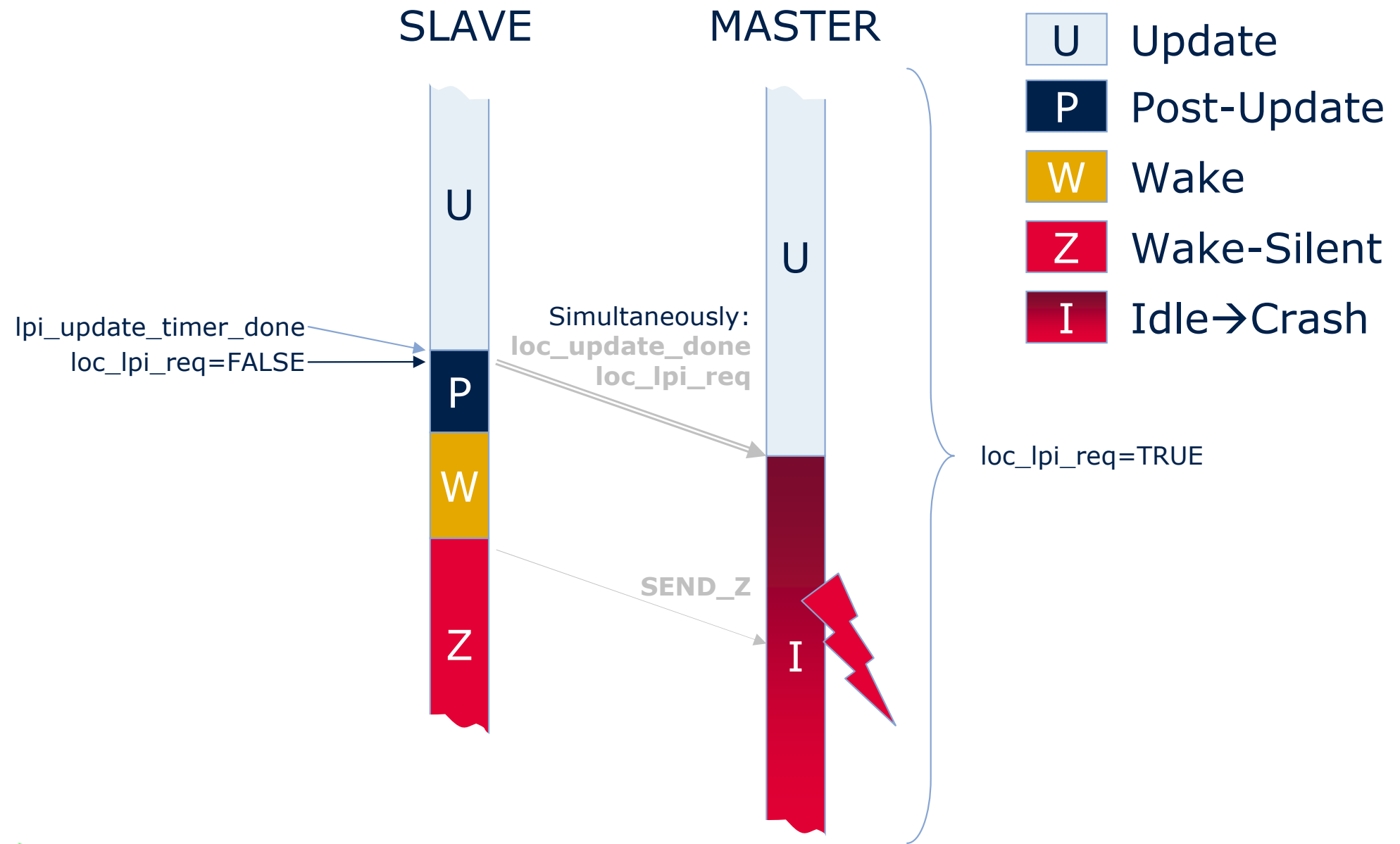


Description of the Corner Case (1)

- A corner case in the IEEE802.3az-clause40 PHY control state diagram has been identified (see Figure 40-15b)
- Scenario:
 - Master continuously gets `loc_lpi_req=true`
 - Master and Slave are in UPDATE state
 - Slave gets timed out (`lpi_update_timer_done`) and transitions into POST_UPDATE. At the same time or shortly after (but within the same symbol period) the slave gets a LPI deassert by `loc_lpi_req=false`
 - Slave sends both inband status information simultaneously to the Master (since it can only signal with 8ns time-resolution):
 - `loc_update_done=true`
 - `loc_lpi_req=false`
- Issue:
 - Master is still in UPDATE and must take immediate transition to IDLE as of Figure 40-15b
 - Slave proceeds with a WAKE and times out into WAKE_SILENT thus ceasing transmission of IDLE symbols which will kill the Master's update of filter coefficients.



Description of the Corner Case (2)



The “8ns synchronization effect”

- The state-diagram in Figure 40-15b assumes asynchronous timing.
- However, inband signaling is used to exchange the variables between link-partners. These signals are thus “synchronized” to the symbol period.
- Consequently, the time-resolution for some of the variables is 8ns and not asynchronous.
- This in turn causes the corner case as described before since it generates the possibility that `LOC_UPDATE_DONE=TRUE` and `LOC_LPI_REQ=FALSE` are sent simultaneously on the line though being generated in a sequence.
- Since the current implementation of state-transitions in UPDATE does assume both signals not asserted at the same time this corner case is generated.



Counter Measures in the State-Diagram

- Change:**
 rem_lpi_req in branch condition from UPDATE to POST_UPDATE is changed to qualify the lpi_update_timer expiration only to allow a link-partner to follow into POST_UPDATE for a WAKE
- Include:**
 loc_update_done into branch condition from UPDATE to IDLE to judge validity of rem_lpi_req

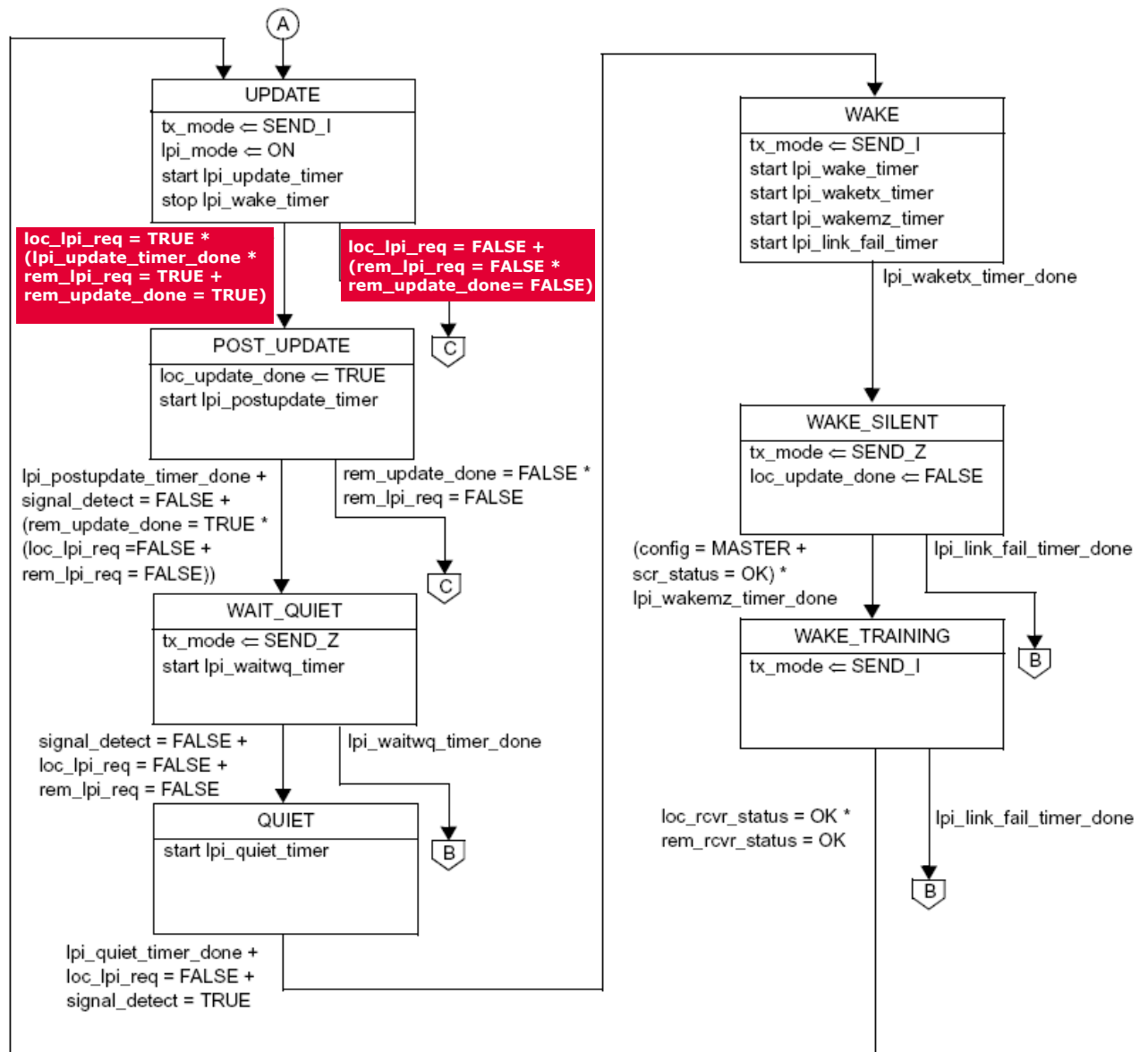
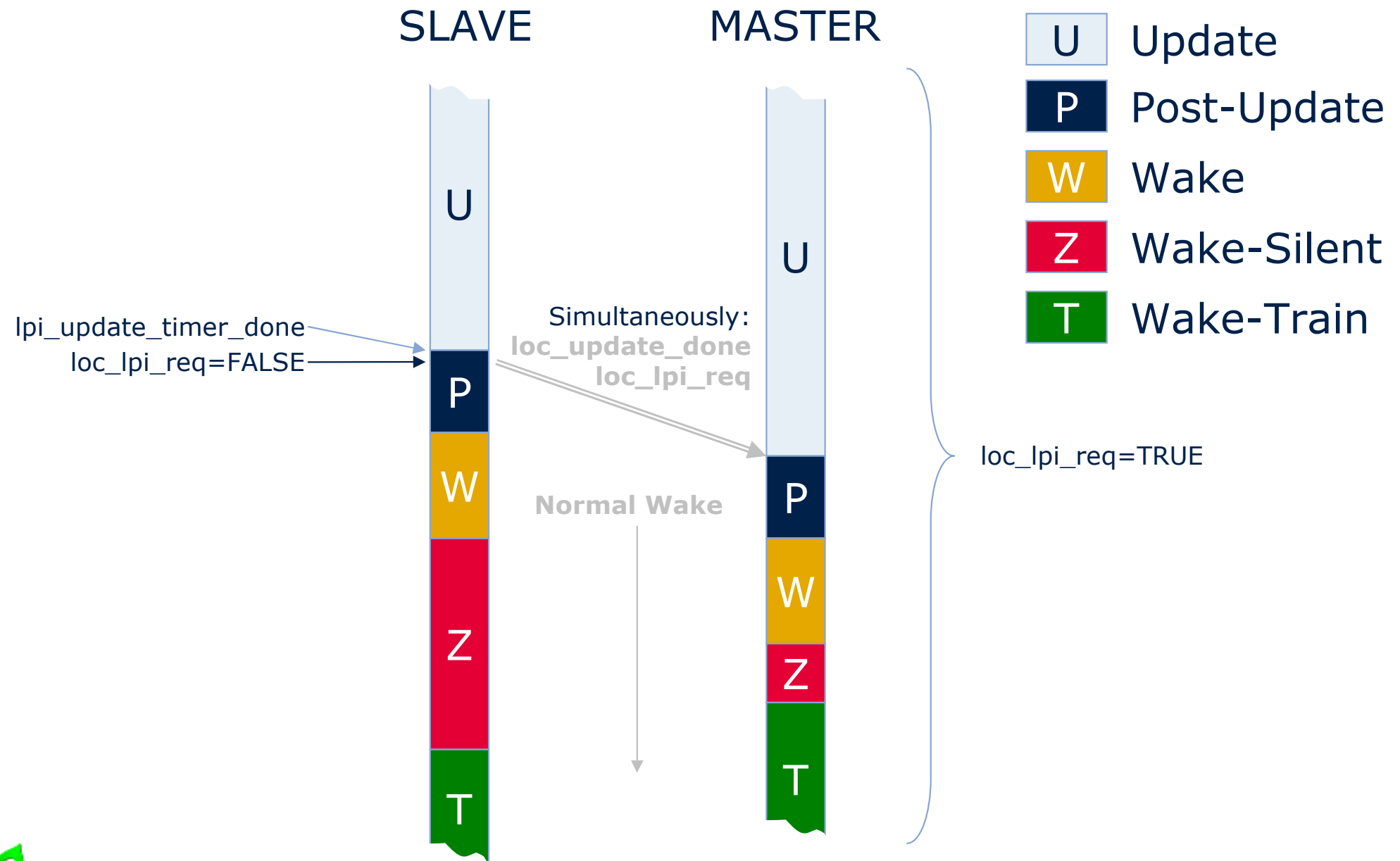


Figure 40–15b—PHY Control state diagram, part b (optional)



Description of the corrected Sequence



Conclusion

- The synchronization effect of the inband signaling to the symbol period generates a corner case in the UPDATE state.
- The corner case can simply be fixed by slight modification of the state transition out of UPDATE.

