



nAUI Ad Hoc Interconnect Definition

ryan.latchman@gennum.com

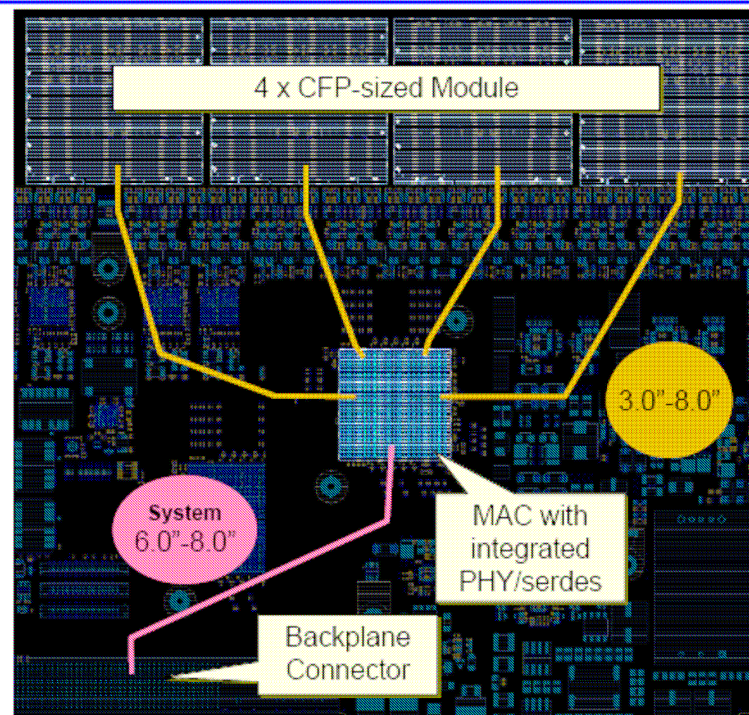
Agenda

1. Call for patents
 1. (<http://standards.ieee.org/board/pat/pat-slideset.ppt>)
2. Agenda – Interconnect Definition
 1. Presentation: Ali Ghiasi
 2. Presentation: Ryan Latchman
3. Path Forward

Previous Link Distance Inputs

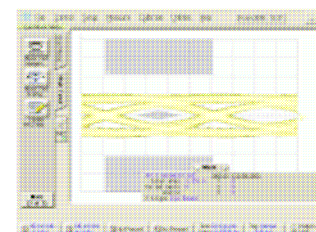
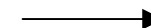
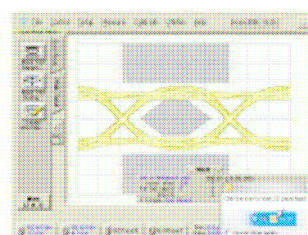
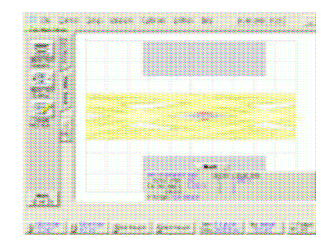
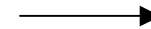
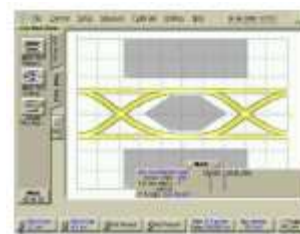
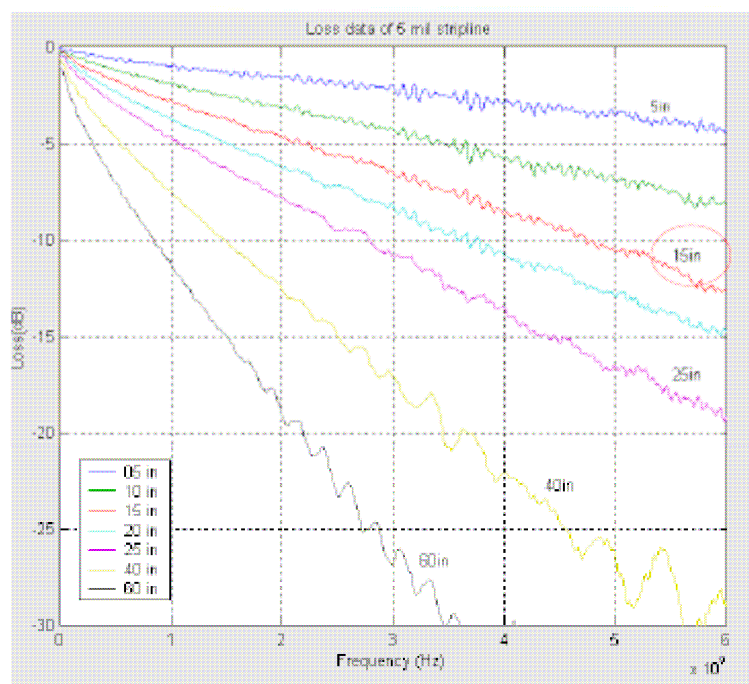
- Nicholl_01_07_08
 - We recommend targeting the PMD service interface at a distance of 4" and XLAUI/CAUI at a distance of 8"

CFP: Four Port Host



Previous Link Distance Inputs

- Latchman_01_07_08
 - >10dB loss at 5.5GHz (+extra connectors & cables & eval board FR4)



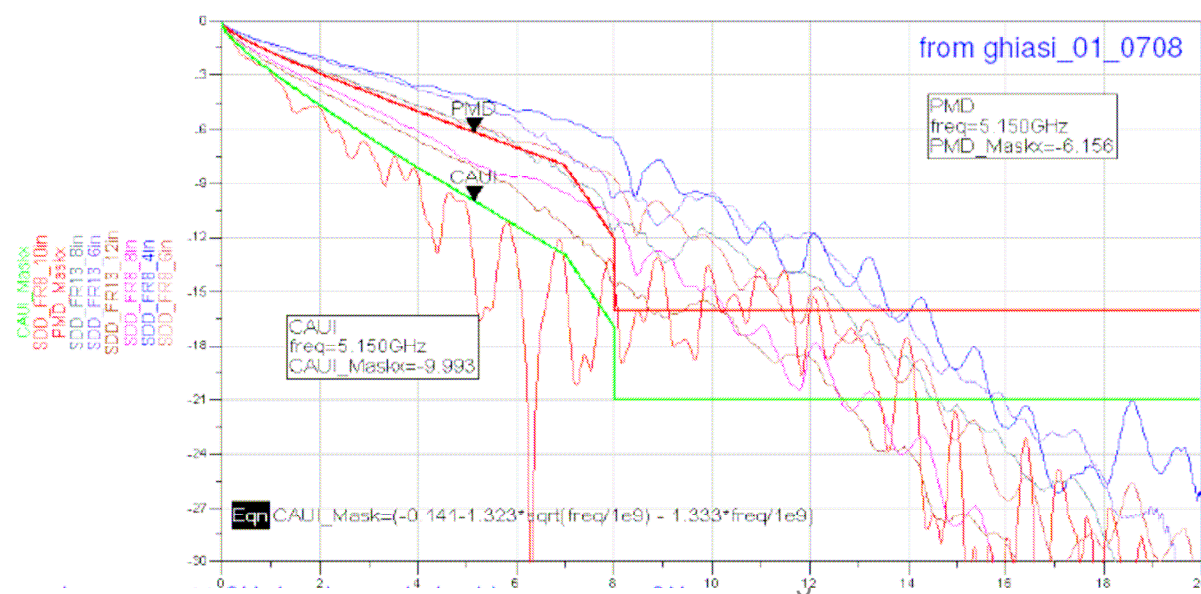
Previous Link Distance Inputs

- Ghiasi_01_07_08
 - See previous presentation

Interface	Isola FR4-8 *	N4000-13 **	Loss at Nyquist	Host PCB Loss at Nyquist 2	Relative to XF
XFP/SFI	150 mm	200 mm	6 dB	4,500	0.00%
petrilla_02_0508	150 mm	200 mm	6 dB	4,500	0.00%
XALUI/CAUI Proposal	250 mm	375 mm	10 dB	8,500	189.00%

*. Assumes 5 mils moderately coupled ~ 7% wide 0.5 oz striplines

**. Connector loss and HCB loss subtracted



Previous Link Distance Inputs

- 802.3ba D1.0 PPI interface
 - nAUI should be able to support greater than this, but similar style in defining

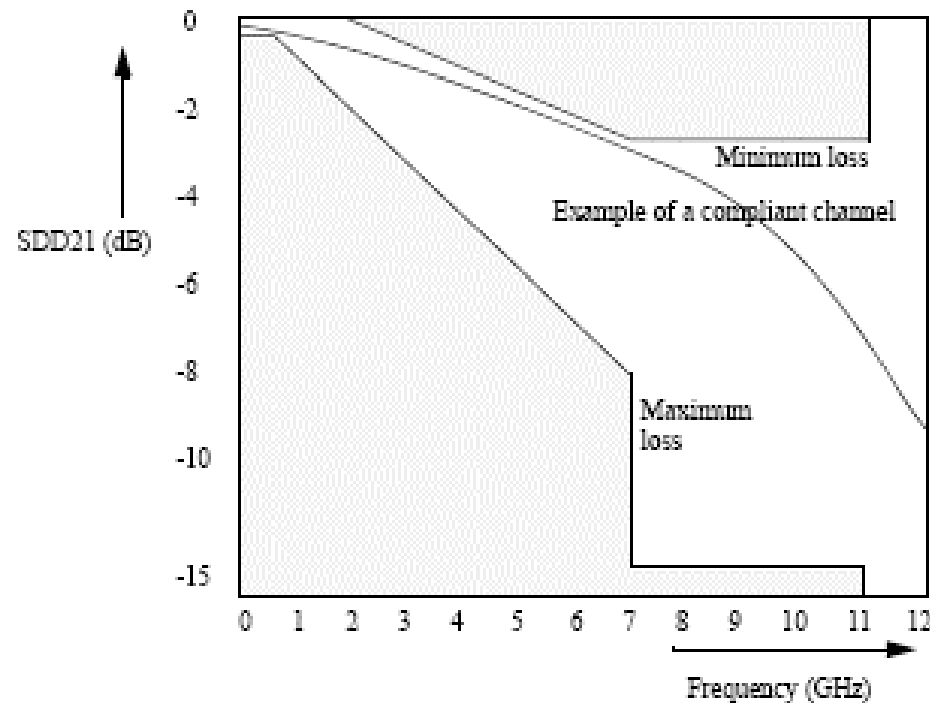


Figure 86-4—PPI channel recommendation

Proposal

- -10dB at 5.5GHz
 - Minimum loss not as important since interface is retimed

