

# Comment #122 on Draft 1.1

IEEE 802.3bp - Interim Meeting - January 2015

Brett McClellan, Marvell

---

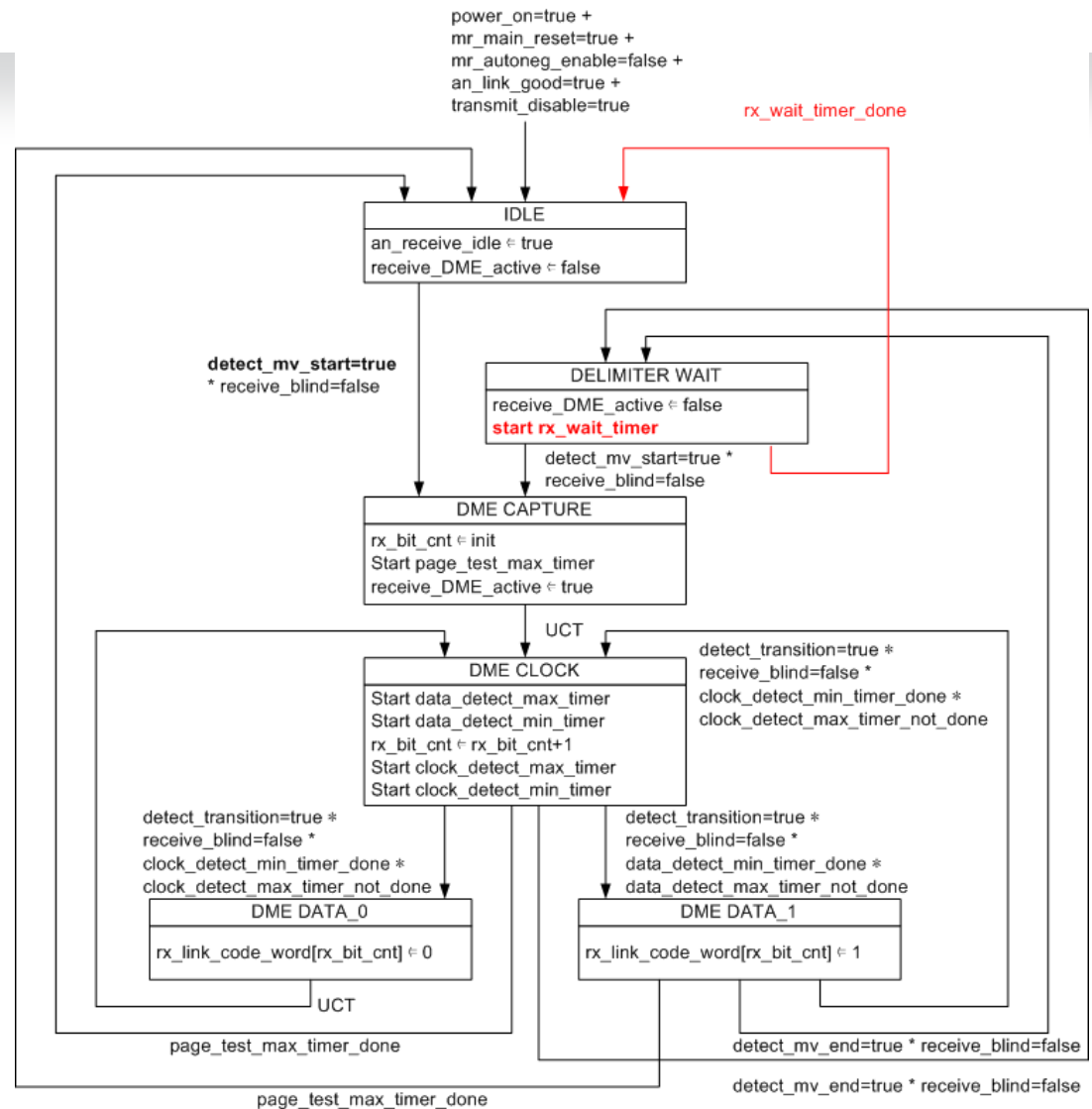
# Comment #122

## Issue

- There is a lockup condition in state DELIMITER WAIT.
- If the link partner stops transmitting there is no path back to the IDLE state which triggers TRANSMIT\_DISABLE

## Remedy

- Add a transition to IDLE. Clause 73 had this transition. See Fig 73-10
- Take this path after a sufficient timeout  $rx\_wait\_timer = 100$  to  $105\mu s$



# THANK YOU