

NOTE — In this figure, the xMII is used as a generic term for the Media Independent Interfaces for implementations of 100 Mb/s and above. For example: for 100 Mb/s implementations this interface is called MII; for 1 Gb/s implementations it is called GMII; for 10 Gb/s implementations it is called XGMII; etc.

xMII = MEDIA INDEPENDENT INTERFACE PHY = PHYSICAL LAYER DEVICE
 MDI = MEDIUM DEPENDENT INTERFACE PMA = PHYSICAL MEDIUM ATTACHMENT
 PCS = PHYSICAL CODING SUBLAYER PMD = PHYSICAL MEDIUM DEPENDENT

Figure 0–1—Relationship of MAC Merge to the ISO/IEC Open Systems Interconnection (OSI) reference model and the IEEE 802.3 Ethernet LAN model

1
2
3
4
5
6
7
8
9
10
11
12
13
14
15
16
17
18
19
20
21
22
23
24
25
26
27
28
29
30
31
32
33
34
35
36
37
38
39
40
41
42
43
44
45
46
47
48
49
50
51
52
53
54

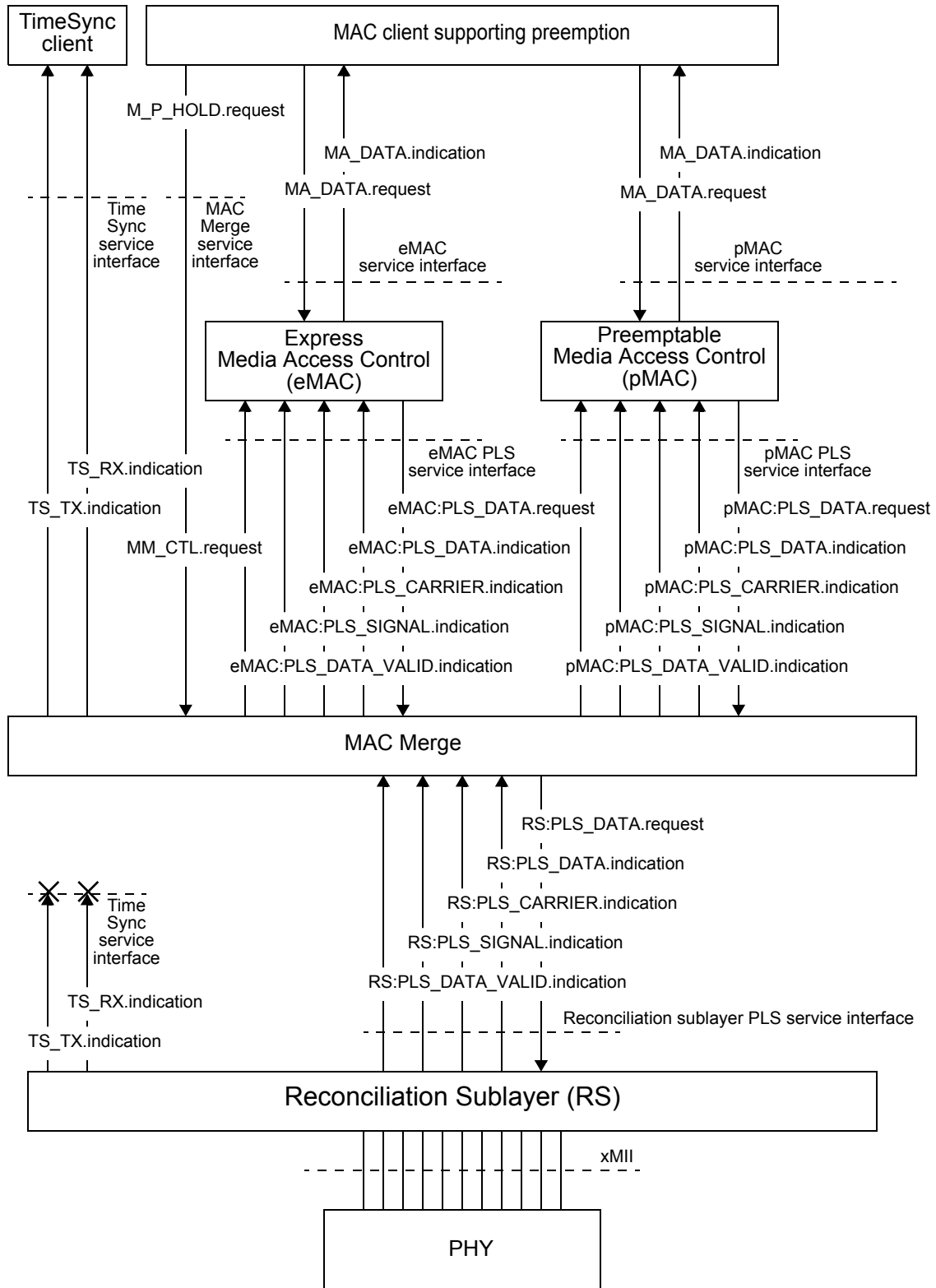


Figure 0-2—MAC Merge sublayer service interfaces diagram