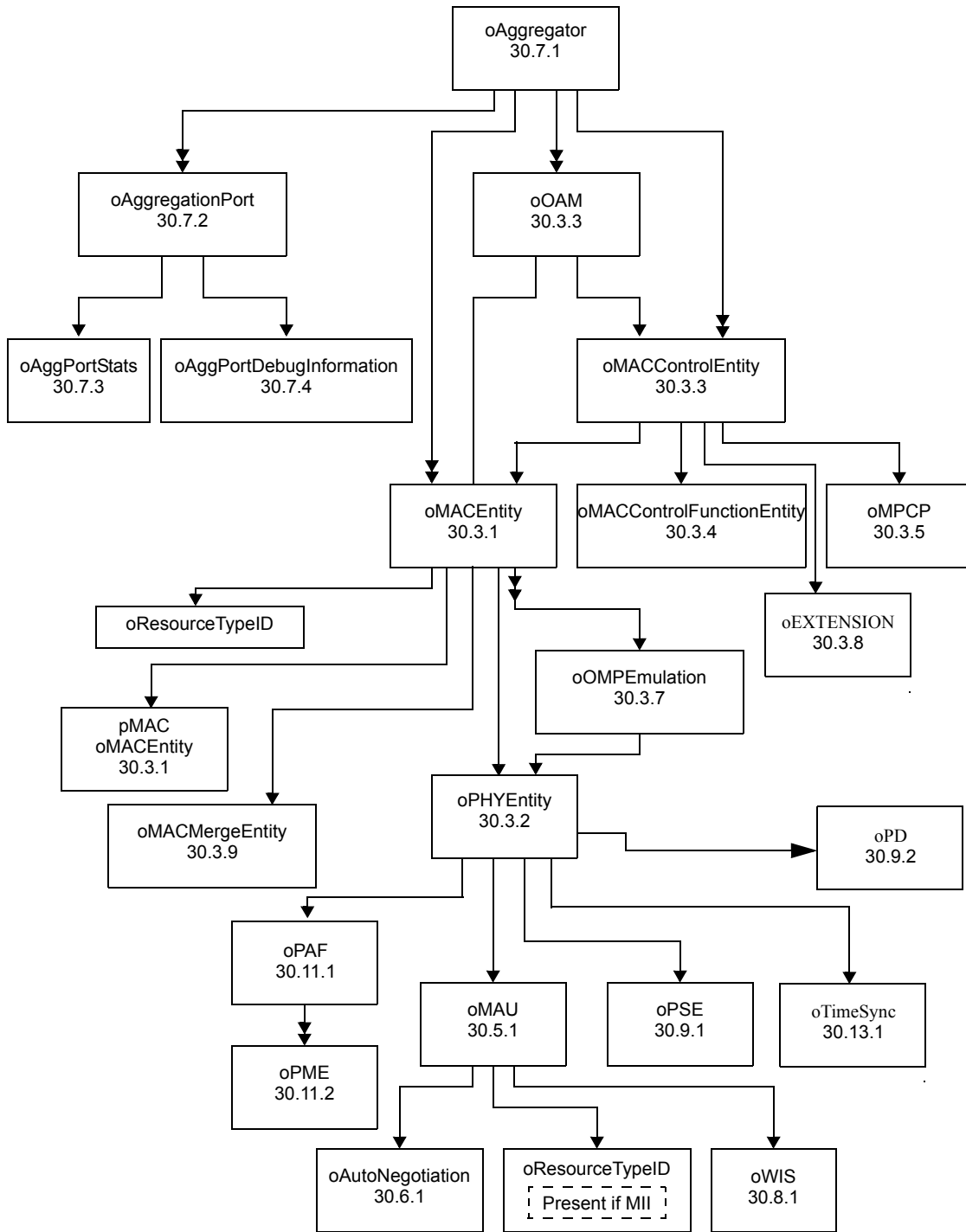


The relationship between oMACEntity and oMACMergeEntity is a two to one relationship

- >> Denotes one-to-many relationship
- > Denotes one-to-one relationship
- >>———— Denotes many-to-one relationship

Note—The objects oAggregator, oAggregationPort, oAggPortStats and oAggPortDebugInformation are deprecated by IEEE Std 802.1AX-2008.

Figure 0-3a— DTE System entity relationship diagram



—————>> Denotes one-to-many relationship pMAC=Preemptive MAC
 —————> Denotes one-to-one relationship >>————— Denotes many-to-one relationship

Note—The objects oAggregator, oAggregationPort, oAggPortStats and oAggPortDebugInformation are deprecated by IEEE Std 802.1AX-2008.

Figure 0–3a— DTE System entity relationship diagram