

Issue #1: Optional PSE behavior exists in the text; is not yet represented in SD.

CI 33	SC 33.2.6	P 90	L 6	# 123
Stover, David		Linear Technology		
Comment Type	T	Comment Status	A	PSE Detection
Allowable detection behavior is inconsistent between CC_DET_SEQ variants. Particularly, CC_DET_SEQ 3 is unique in that an invalid detection signature on alt_pri prevents PSE from investigating alt_sec.				
<i>SuggestedRemedy</i>				
Add the following text: "A Type 3 or Type 4 PSE detecting an invalid PD signature on either alternative may perform detection on the other alternative."				
Response		Response Status	C	
ACCEPT IN PRINCIPLE.				
Add the following text: "A Type 3 or Type 4 PSE detecting an invalid PD signature on either alternative may perform detection on the other alternative, and if valid may perform classification on that pairset."				

Proposed fix:

1. Add the following to the PSE variables section

#### option\_probe\_alt\_sec

This option variable indicates if the PSE will continue to detect and conditionally class on the Secondary Alternative in the event an invalid detect or class result is found on the Primary Alternative. This variable applies to CC\_DET\_SEQ = 3.

Values:

FALSE: PSE does not probe the Secondary Alternative if an invalid signature is found on the Primary Alternative.

TRUE: PSE does probe the Secondary Alternative if an invalid signature is found on the Primary Alternative.

#### det\_once\_sec

This variable indicates if the PSE has probed the Secondary Alternative at least once following exit from ENTRY\_SEC. This variable is only valid when sism is TRUE.

Values:

FALSE: The PSE has not probed on the Secondary Alternative.

TRUE: The PSE has probed the Secondary Alternative at least once.

2. Make the following modifications to PSE state diagram (see next page)

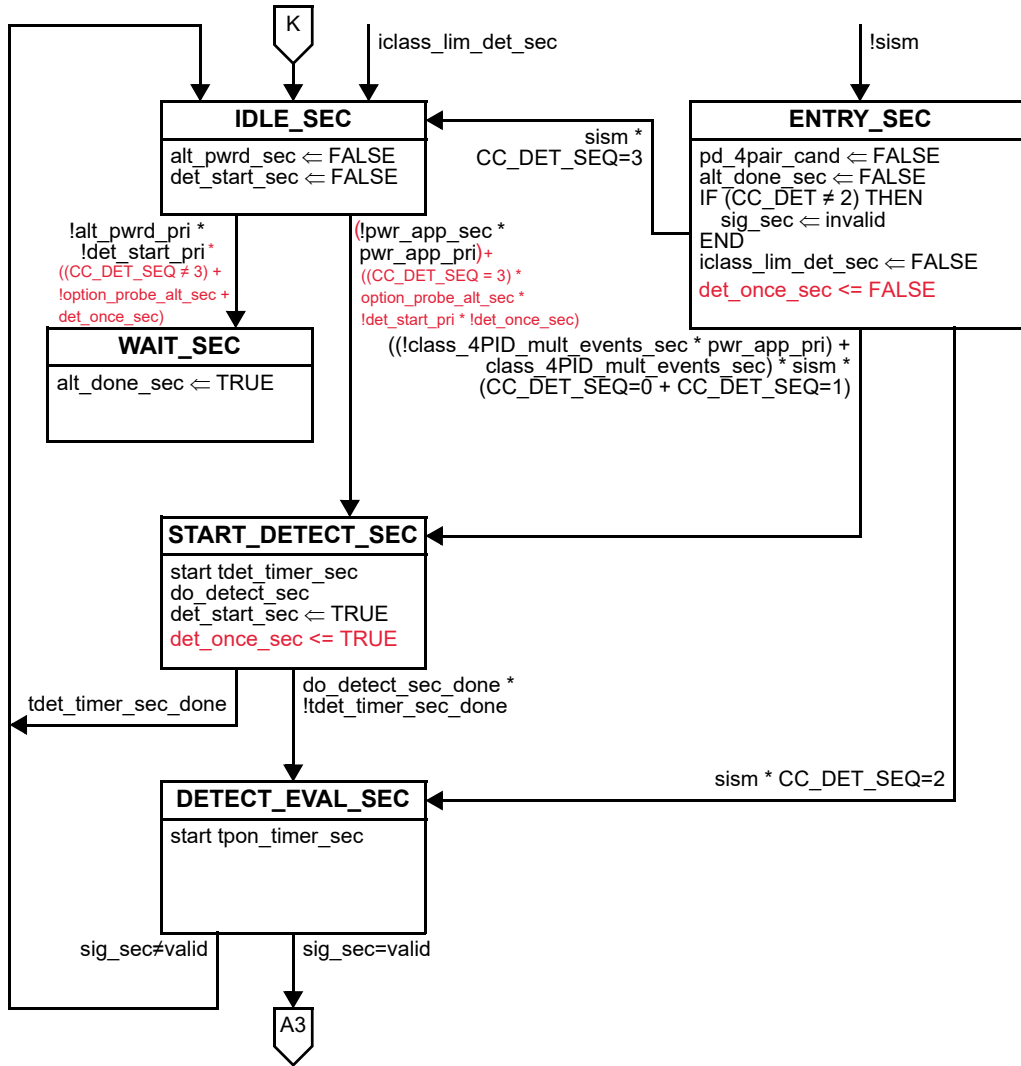


Figure 33-17—Type 3 and Type 4 Secondary Alternative dual-signature semi-independent PSE state diagram

1  
2  
3  
4  
5  
6  
7  
8  
9  
10  
11  
12  
13  
14  
15  
16  
17  
18  
19  
20  
21  
22  
23  
24  
25  
26  
27  
28  
29  
30  
31  
32  
33  
34  
35  
36  
37  
38  
39  
40  
41  
42  
43  
44  
45  
46  
47  
48  
49  
50  
51  
52  
53  
54

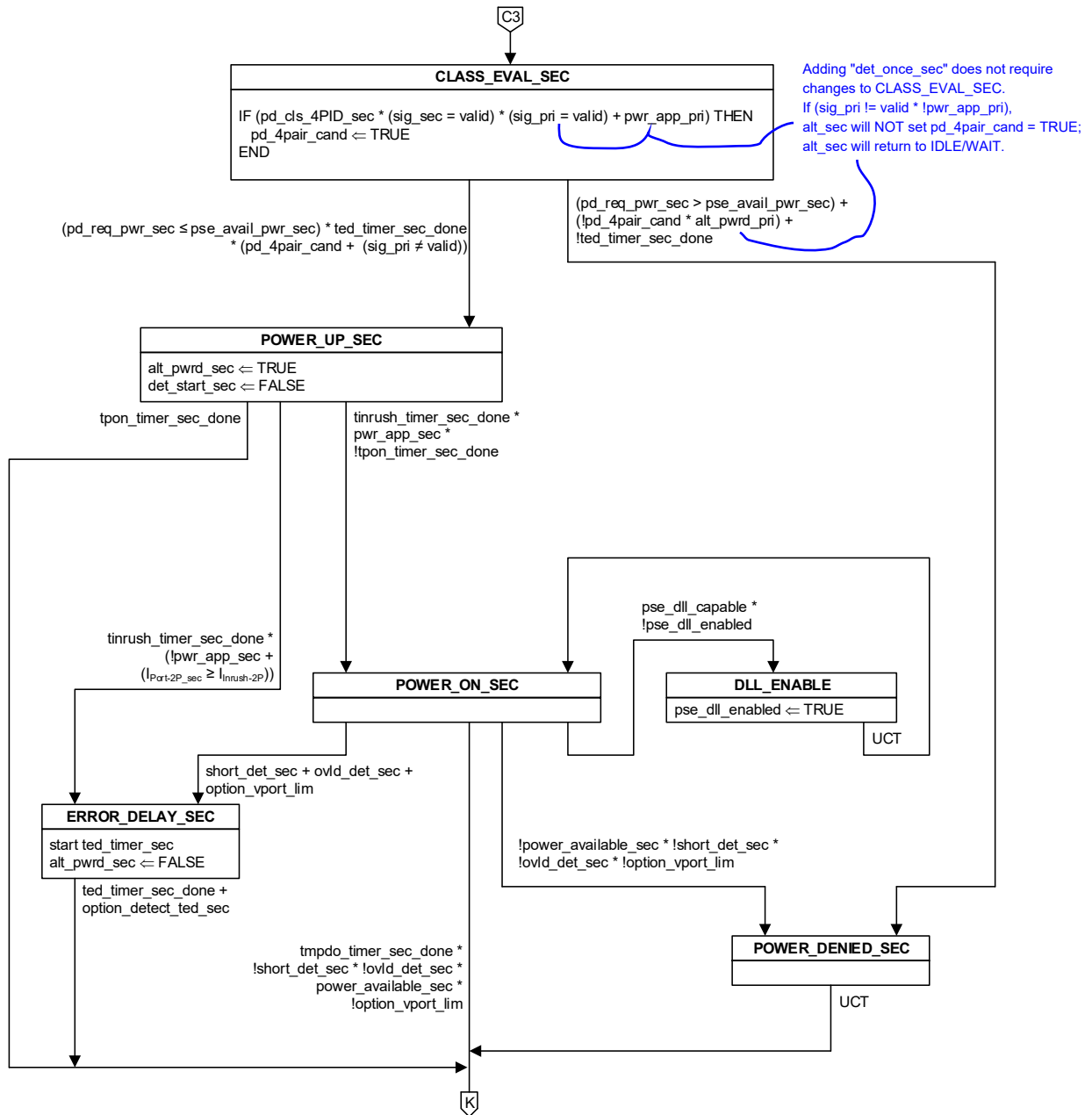


Figure 33–17—Type 3 and Type 4 Secondary Alternative dual-signature semi-independent PSE state diagram (continued)

1  
2  
3  
4  
5  
6  
7  
8  
9  
10  
11  
12  
13  
14  
15  
16  
17  
18  
19  
20  
21  
22  
23  
24  
25  
26  
27  
28  
29  
30  
31  
32  
33  
34  
35  
36  
37  
38  
39  
40  
41  
42  
43  
44  
45  
46  
47  
48  
49  
50  
51  
52  
53  
54

Issue #2: Classification in PSE SD is expressed in terms of `pse_avail_pwr`, `class_num_events`. Behavior in PSE SD today may not perform as intended.

Proposed fix: Make the following changes to PSE SD (see next page)

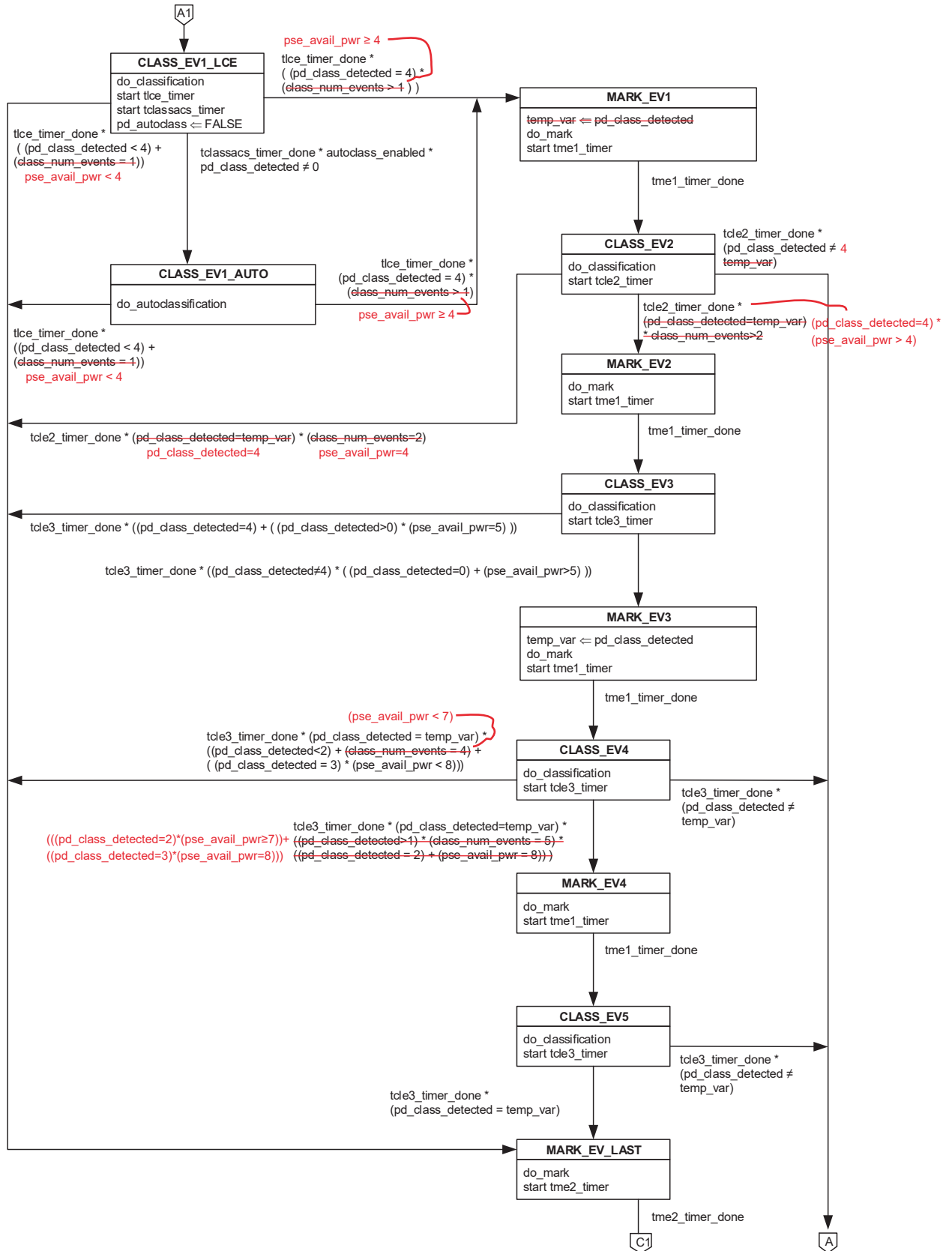


Figure 33–18—Type 3 and Type 4 PSE single-signature classification state diagram

NOTE: Repeat these changes for "\_SEC" Class SD

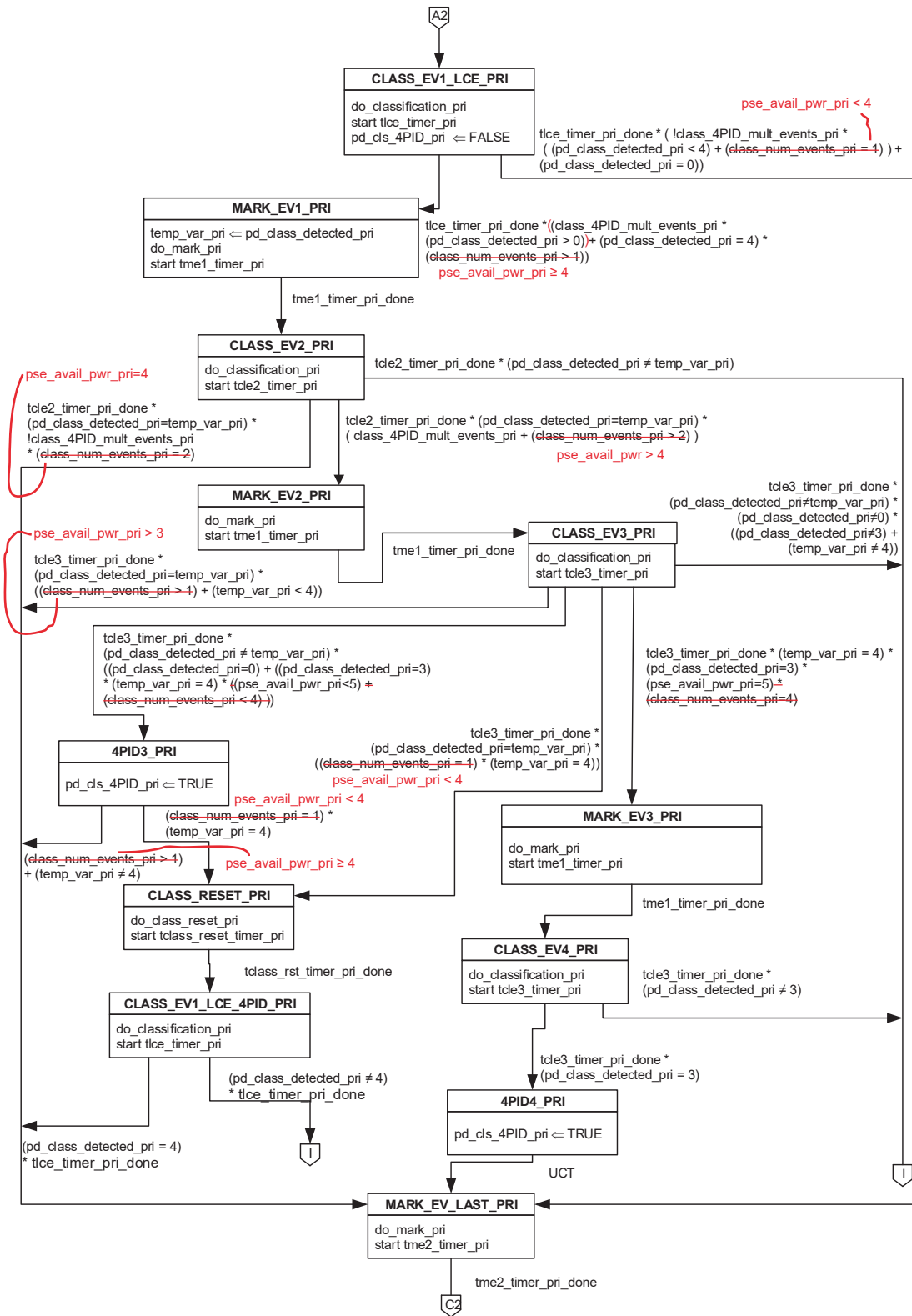


Figure 33–19—Type 3 and Type 4 PSE dual-signature classification state diagram on the Primary Alternative