

# Agenda and General Information

IEEE P802.3cv Power over Ethernet (Maintenance #15)

Chad Jones  
Cisco Systems, Inc,  
Teleconference, October 12, 2020

# Agenda

---

- Welcome and Introductions
- Approve Agenda
- Goals for this meeting
- Reflector and Web
- Ground Rules
- IEEE
  - Structure, Bylaws and Rules
  - Call for Patents
  - IEEE Standards Process
- Comment resolution
- Presentations

# Goals for the meeting

---

- Review rejected comment
- Craft a solution

# Task Force Decorum

---



- An officer is permitted to make an audio or slideshow recording of this meeting exclusively for the purpose of generating minutes which shall not be copied or distributed. **IEEE 802.3 meetings do not use this option.** Recording of the proceedings by any other participant or observer, in part or in whole, via any means, is prohibited. (January 2020 IEEE-SA Standards Board Ops Manual 5.3.3.2)
- Press (i.e., anyone reporting publicly on this meeting) are to announce their presence (January 2020 IEEE-SA Standards Board Ops Manual 5.3.3.3)
- The conference tool has a chat function. Chats to all should be treated as a public statement. Material in the chat window may appear in the minutes.
- Cell phone ringers off
- Please observe proper decorum in meetings – **MUTE YOUR PHONE IF NOT SPEAKING**

# Reflector and Web

---

- To subscribe to the Maintenance reflector, send an email to:

[ListServ@ieee.org](mailto:ListServ@ieee.org)

with the following in the body of the message (do not include “<>”):

*[subscribe stds-802-3-maint <yourfirstname> <yourlastname>](#)*

**OR** visit <http://www.ieee802.org/3/maint/reflector.html> for instructions on subscribing via the Listserv web interface

- Send P802.3cv reflector messages to:

[stds-802-3-maint@listserv.ieee.org](mailto:stds-802-3-maint@listserv.ieee.org)

- Task Force web page URL:

<http://www.ieee802.org/3/cv/index.html>

# IEEE P802.3cv Power over Ethernet (Maintenance #15)

## Approved Project Documents

---

- PAR
  - [http://www.ieee802.org/3/cv/P802d3cv\\_PAR.pdf](http://www.ieee802.org/3/cv/P802d3cv_PAR.pdf)
- 5 Criteria
  - NA
- Objectives
  - NA

# Task Force Private Area

---

- URL: <http://www.ieee802.org/3/private/maint/cvballot/index.html>
  - Username:
  - Password:
- Write it down...
- Note - The draft, and any other content, is posted for your review only, and neither the content nor access information should be copied or redistributed to others in violation of document copyrights.

# Ground Rules

---

- Based upon IEEE 802.3 Rules
  - Foundation based upon Robert's Rules of Order
  - Anyone in the room may speak
  - Anyone in the room may vote
- **RESPECT**... give it, get it
- NO product pitches
- NO corporate pitches
- NO prices!!!
  - This includes costs, ASPs, etc. no matter what the currency
- NO restrictive notices

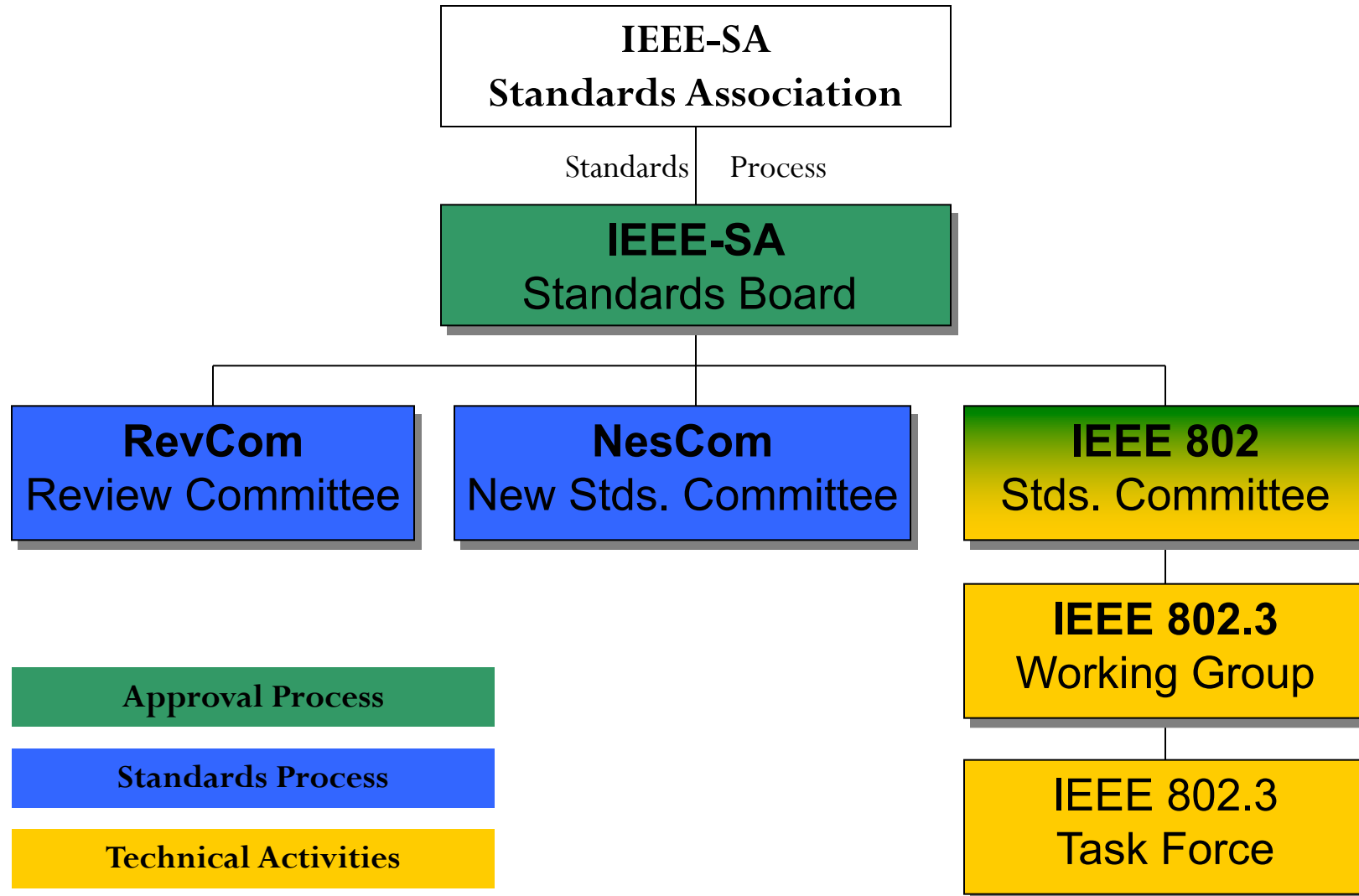


# Attendance

---

- ~~Tutorial Material on attendance tool~~
  - ~~[http://ieee802.org/3/minutes/attendance\\_procedures.pdf](http://ieee802.org/3/minutes/attendance_procedures.pdf)~~
  -
- ~~Access details~~
  - URL: ~~<http://imat.ieee.org/>~~
  - (For interim) Password will be provided

# IEEE Structure



# Important Bylaws and Rules

---

- **IEEE-SA Operations Manual**  
[http://standards.ieee.org/develop/policies/sa\\_opman/](http://standards.ieee.org/develop/policies/sa_opman/)
- **IEEE-SA Standards Board Bylaws**  
<http://standards.ieee.org/develop/policies/bylaws/>
- **IEEE-SA Standards Board Operations Manual**  
<http://standards.ieee.org/develop/policies/opman/>
- **IEEE 802 LAN/MAN Standards Committee (LMSC) Policies and Procedures**  
<https://ieee.app.box.com/v/PandP-LMSC>
- **IEEE 802 LAN/MAN Standards Committee (LMSC) Operations Manual**  
<http://www.ieee802.org/devdocs.shtml>
- **IEEE 802 LAN/MAN Standards Committee (LMSC) Working Group (WG) Policies and Procedures**  
<http://www.ieee802.org/devdocs.shtml>
- **IEEE 802.3 Working Group Operating Rules**  
[http://ieee802.org/3/rules/P802\\_3\\_rules.pdf](http://ieee802.org/3/rules/P802_3_rules.pdf)

# **Participants have a duty to inform the IEEE**

- Participants **shall** inform the IEEE (or cause the IEEE to be informed) of the identity of each holder of any potential Essential Patent Claims of which they are personally aware if the claims are owned or controlled by the participant or the entity the participant is from, employed by, or otherwise represents
- Participants **should** inform the IEEE (or cause the IEEE to be informed) of the identity of any other holders of potential Essential Patent Claims

**Early identification of holders of potential  
Essential Patent Claims is encouraged**

# Ways to inform IEEE

- Cause an LOA to be submitted to the IEEE-SA ([patcom@ieee.org](mailto:patcom@ieee.org)); or
- Provide the chair of this group with the identity of the holder(s) of any and all such claims as soon as possible; or
- **Speak up now and respond to this Call for Potentially Essential Patents**

If anyone in this meeting is personally aware of the holder of any patent claims that are potentially essential to implementation of the proposed standard(s) under consideration by this group and that are not already the subject of an Accepted Letter of Assurance, please respond at this time by providing relevant information to the WG Chair

# Other guidelines for IEEE WG meetings

- All IEEE-SA standards meetings shall be conducted in compliance with all applicable laws, including antitrust and competition laws.
  - Don't discuss the interpretation, validity, or essentiality of patents/patent claims.
  - Don't discuss specific license rates, terms, or conditions.
    - Relative costs of different technical approaches that include relative costs of patent licensing terms may be discussed in standards development meetings.
    - Technical considerations remain the primary focus
  - Don't discuss or engage in the fixing of product prices, allocation of customers, or division of sales markets.
  - Don't discuss the status or substance of ongoing or threatened litigation.
  - Don't be silent if inappropriate topics are discussed ... do formally object.

-----  
For more details, see *IEEE-SA Standards Board Operations Manual*, clause 5.3.10 and  
*Antitrust and Competition Policy: What You Need to Know* at  
<http://standards.ieee.org/develop/policies/antitrust.pdf>

# Patent-related information

The patent policy and the procedures used to execute that policy are documented in the:

- **IEEE-SA Standards Board Bylaws**  
(<http://standards.ieee.org/develop/policies/bylaws/sect6-7.html#6>)
- **IEEE-SA Standards Board Operations Manual**  
(<http://standards.ieee.org/develop/policies/opman/sect6.html#6.3>)

Material about the patent policy is available at

<http://standards.ieee.org/about/sasb/patcom/materials.html>

**If you have questions, contact the IEEE-SA  
Standards Board Patent Committee  
Administrator at [patcom@ieee.org](mailto:patcom@ieee.org)**

# **IEEE SA COPYRIGHT POLICY**

**By participating in this activity, you agree to comply with the IEEE Code of Ethics, all applicable laws, and all IEEE policies and procedures including, but not limited to, the IEEE SA Copyright Policy.**

- Previously Published material (copyright assertion indicated) shall not be presented/submitted to the Working Group nor incorporated into a Working Group draft unless permission is granted.
- Prior to presentation or submission, you shall notify the Working Group Chair of previously Published material and should assist the Chair in obtaining copyright permission acceptable to IEEE SA.
- For material that is not previously Published, IEEE is automatically granted a license to use any material that is presented or submitted.



# IEEE SA COPYRIGHT POLICY

■ The IEEE SA Copyright Policy is described in the IEEE SA Standards Board Bylaws and IEEE SA Standards Board Operations Manual

- IEEE SA Copyright Policy, see  
Clause 7 of the IEEE SA Standards Board Bylaws  
<https://standards.ieee.org/about/policies/bylaws/sect6-7.html#7>  
Clause 6.1 of the IEEE SA Standards Board Operations Manual  
<https://standards.ieee.org/about/policies/opman/sect6.html>

■ IEEE SA Copyright Permission

- <https://standards.ieee.org/content/dam/ieee-standards/standards/web/documents/other/permissionltrs.zip>

■ IEEE SA Copyright FAQs

- <http://standards.ieee.org/faqs/copyrights.html/>

■ IEEE SA Best Practices for IEEE Standards Development

- [http://standards.ieee.org/develop/policies/best\\_practices\\_for\\_ieee\\_standards\\_development\\_051215.pdf](http://standards.ieee.org/develop/policies/best_practices_for_ieee_standards_development_051215.pdf)

■ Distribution of Draft Standards (see 6.1.3 of the SASB Operations Manual)

- <https://standards.ieee.org/about/policies/opman/sect6.html>

---

## Participant behavior in IEEE-SA activities is guided by the IEEE Codes of Ethics & Conduct

- All participants in IEEE-SA activities are expected to adhere to the core principles underlying the:
  - [IEEE Code of Ethics](#)
  - [IEEE Code of Conduct](#)
- The core principles of the IEEE Codes of Ethics & Conduct are to:
  - *Uphold the highest standards of integrity, responsible behavior, and ethical and professional conduct*
  - *Treat people fairly and with respect, to not engage in harassment, discrimination, or retaliation, and to protect people's privacy.*
  - *Avoid injuring others, their property, reputation, or employment by false or malicious action*
- The most recent versions of these Codes are available at <http://www.ieee.org/about/corporate/governance>

---

## Participants in the IEEE-SA “*individual process*” shall act independently of others, including employers

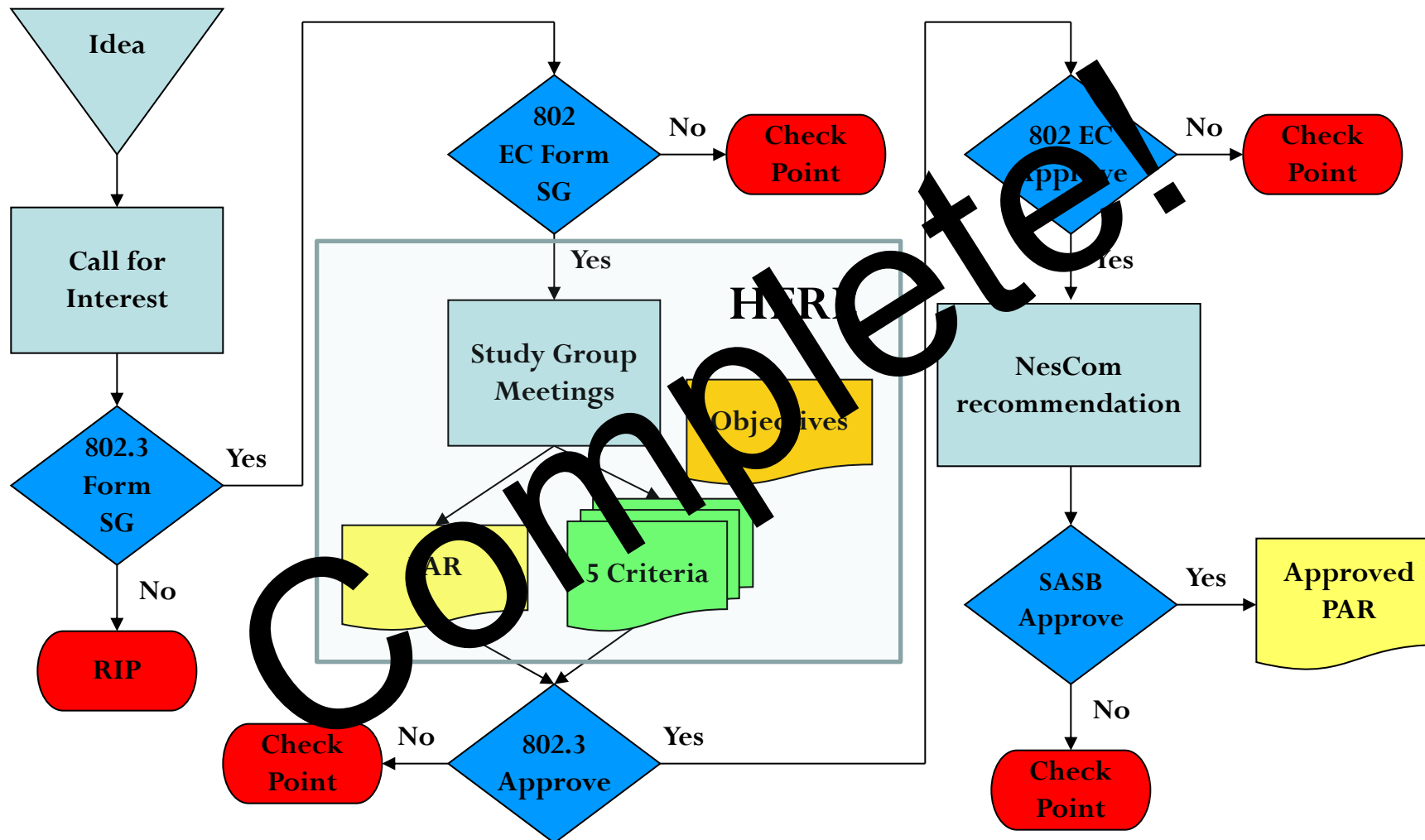
- The [IEEE-SA Standards Board Bylaws](#) require that “*participants in the IEEE standards development individual process shall act based on their qualifications and experience*”
- This means participants:
  - **Shall act & vote** based on their personal & independent opinions derived from their expertise, knowledge, and qualifications
  - **Shall not act or vote** based on any obligation to or any direction from any other person or organization, including an employer or client, regardless of any external commitments, agreements, contracts, or orders
  - **Shall not direct** the actions or votes of other participants or retaliate against other participants for fulfilling their responsibility to act & vote based on their personal & independently developed opinions
- By participating in standards activities using the “*individual process*”, you are deemed to accept these requirements; if you are unable to satisfy these requirements then you shall immediately cease any participation

---

## IEEE-SA standards activities shall allow the fair & equitable consideration of all viewpoints

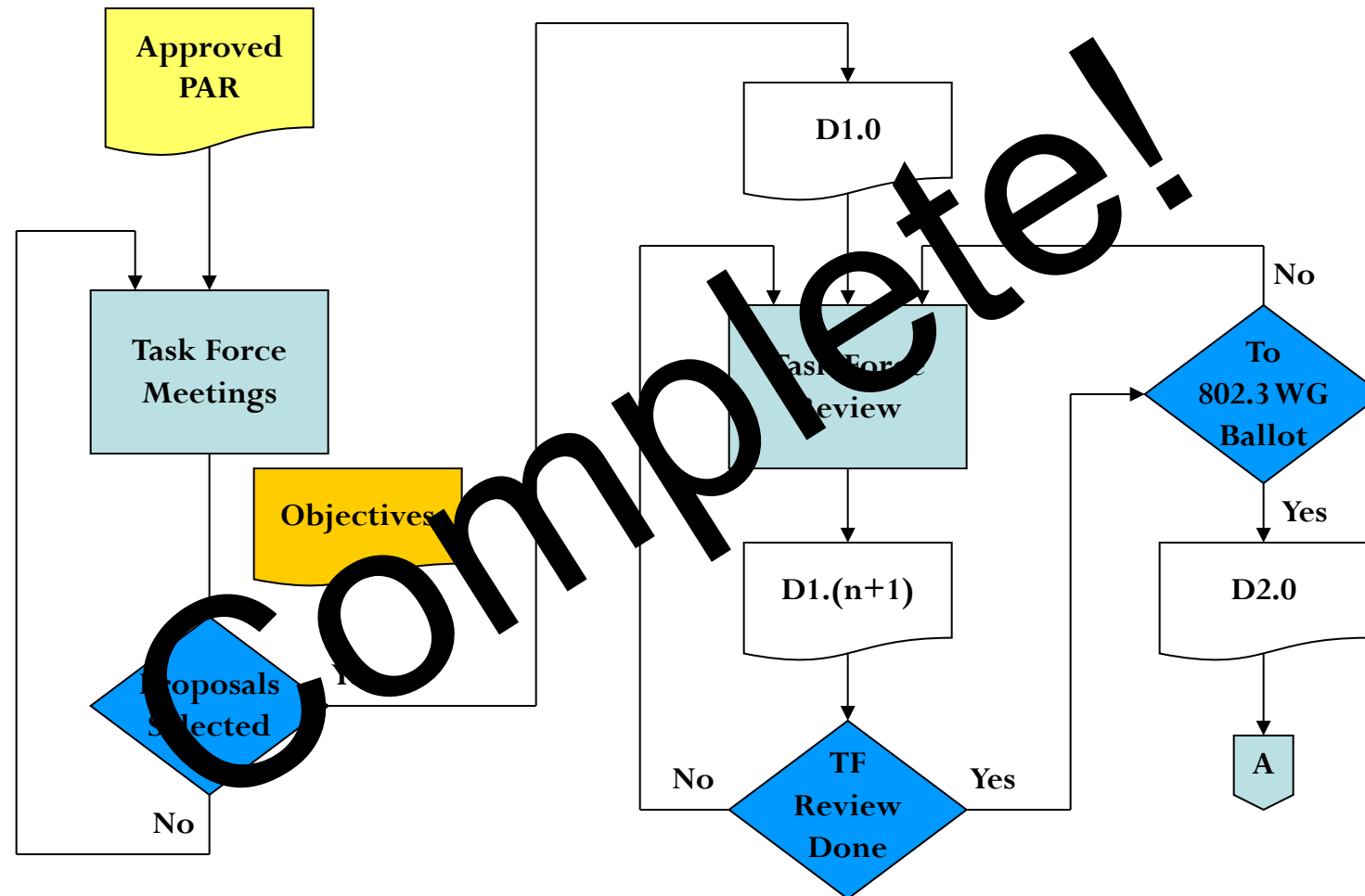
- The [IEEE-SA Standards Board Bylaws](#) (clause 5.2.1.3) specifies that *“the standards development process shall not be dominated by any single interest category, individual, or organization”*
  - This means no participant may exercise *“authority, leadership, or influence by reason of superior leverage, strength, or representation to the exclusion of fair and equitable consideration of other viewpoints”* or *“to hinder the progress of the standards development activity”*
- This rule applies equally to those participating in a standards development project and to that project’s leadership group
- Any person who reasonably suspects that dominance is occurring in a standards development project is encouraged to bring the issue to the attention of the Standards Committee or the project’s IEEE-SA Program Manager

# Overview of IEEE 802.3 Standards Process (1/5)- Study Group Phase

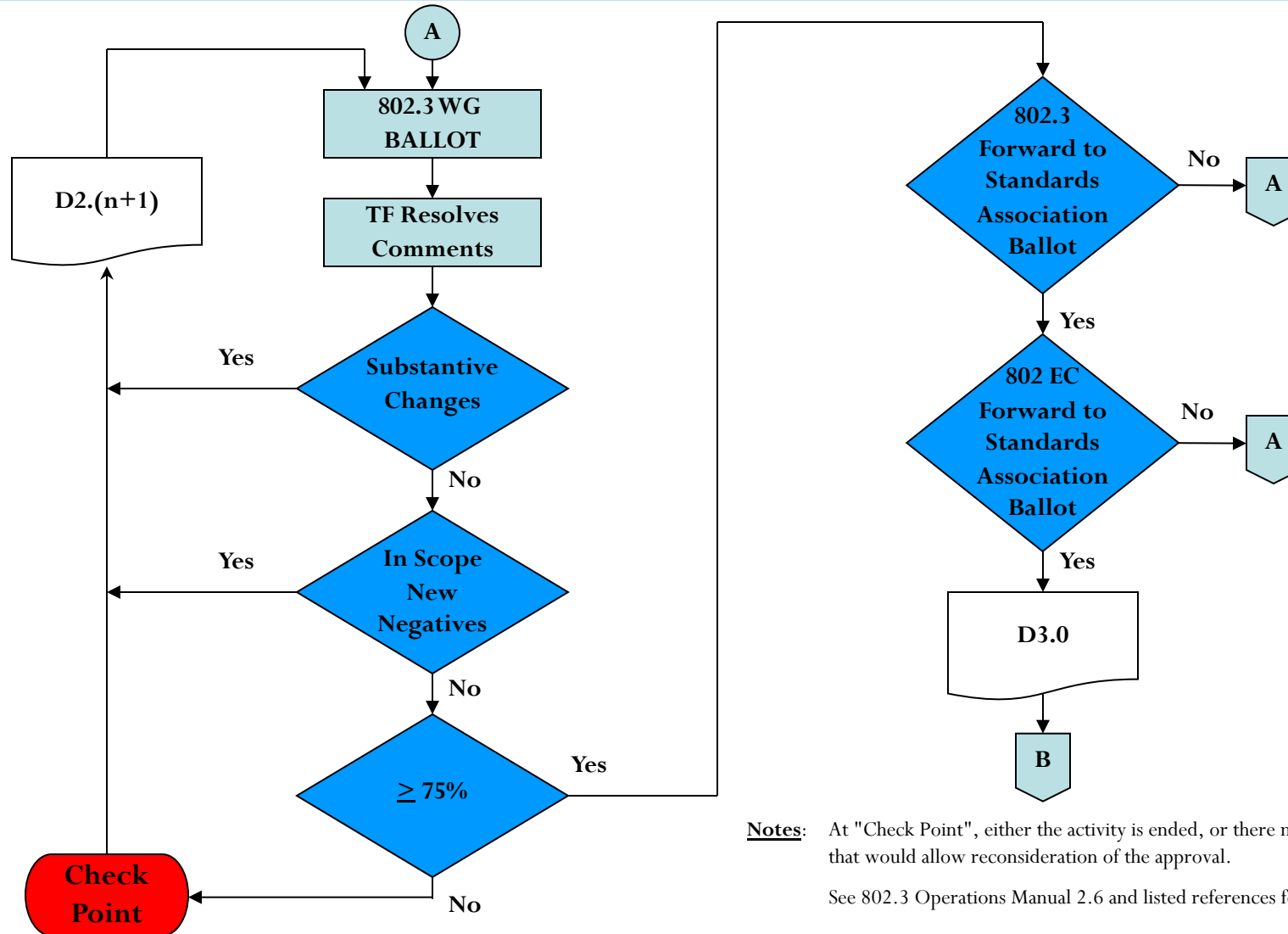


Note: At "Check Point", either the activity is ended, or there may be various options that would allow reconsideration of the approval.

# Overview of IEEE 802.3 Standards Process (2/5) – Task Force Comment Phase



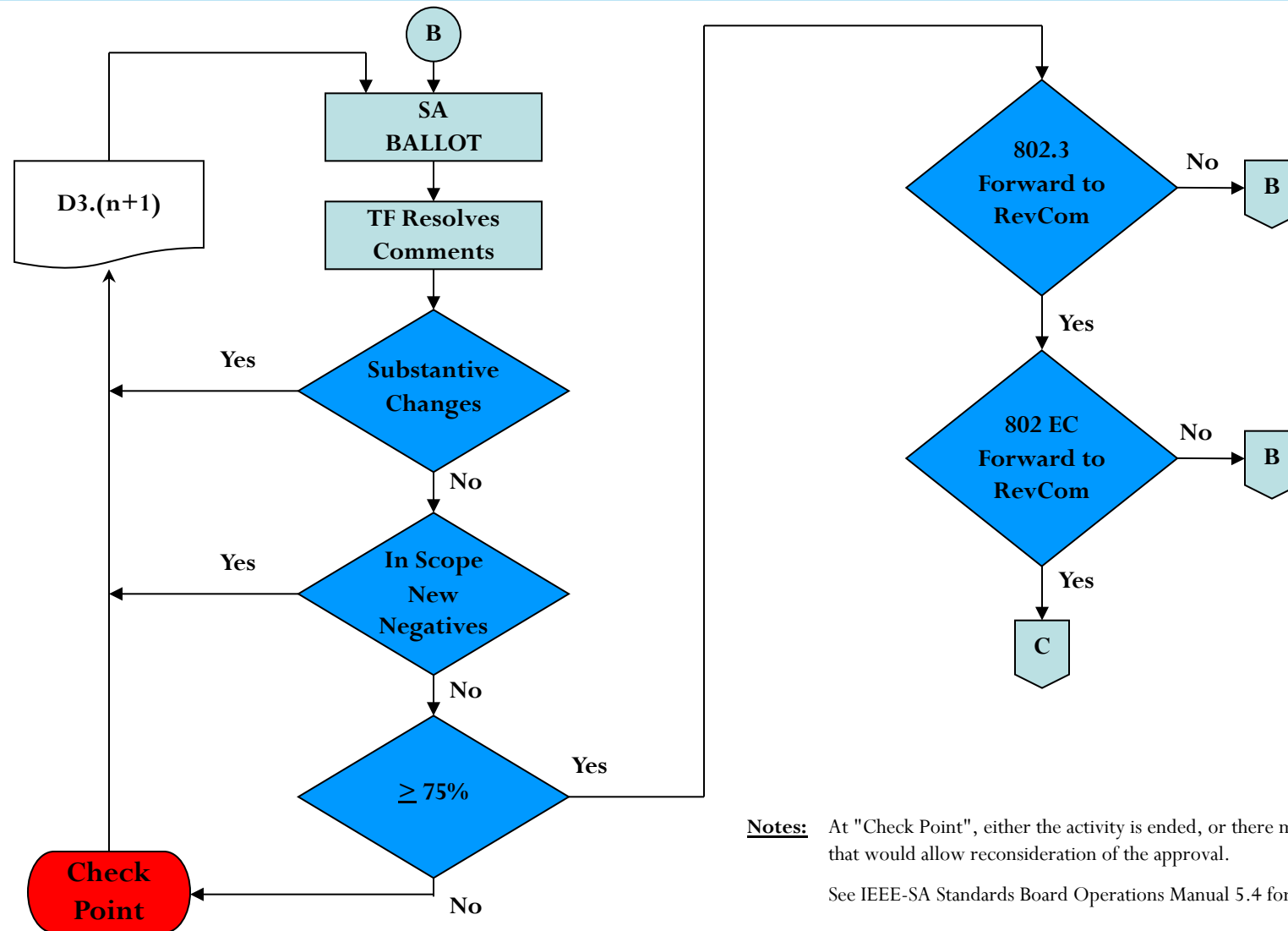
# Overview of IEEE 802.3 Standards Process (3/5) – Working Group Ballot Phase



**Notes:** At "Check Point", either the activity is ended, or there may be various options that would allow reconsideration of the approval.

See 802.3 Operations Manual 2.6 and listed references for complete description

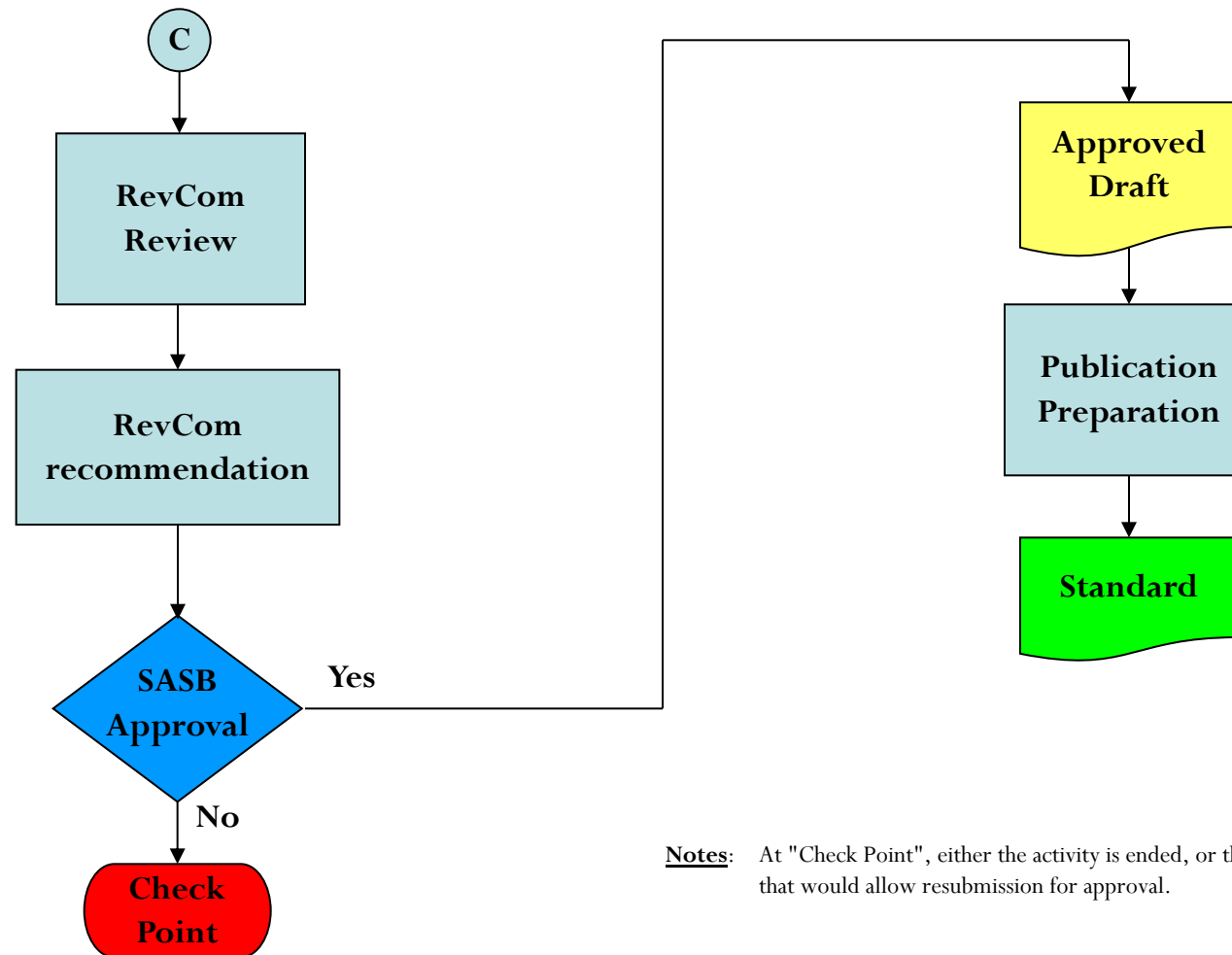
# Overview of IEEE 802.3 Standards Process (4/5)- IEEE Standards Association (SA) Ballot Phase



**Notes:** At "Check Point", either the activity is ended, or there may be various options that would allow reconsideration of the approval.  
See IEEE-SA Standards Board Operations Manual 5.4 for complete description



# Overview of IEEE 802.3 Standards Process (5/5) – Final Approvals / Standard Release



**Notes:** At "Check Point", either the activity is ended, or there may be various options that would allow resubmission for approval.

# Comment Resolution

---

There is ambiguity regarding the permitted power draw during the inrush delay phase. The issue is that in the POWER DELAY state, pse assigned class is set, based on the number of class events and the PD re- requested Class. During this state, the variables pd max power and pse assigned class may be in conflict, where pd max power would be less than pse assigned class. Similarly, the NO POWER states all depend on the PD obeying pd max power.

This proposed solution addresses the ambiguity in the definition of the “the assigned Class” in 145.3.8.2. For good measure, we point to pd max power in a few other locations.

# Rejected Solution

## 145.3.3.3.2 Variables

**Change the definition of pd max power as follows:**

pd max power

A variable indicating the maximum power that the PD may draw from the PSE. See power classifications in Table 145–29. **The values for PClass PD and PPeak PD are derived from this variable.**

## 145.3.3.4.2 Variables

**Change the definition of pd max power mode(X) as follows:**

pd max power mode(X)

A variable indicating the maximum power that the PD may draw from the PSE on Mode X. See power classifications in Table 145–29. **The values for PClass PD-2P and PPeak PD-2P are derived from this variable.**

## 145.3.8.2 Input average power

**Change the 4th paragraph as follows:**

PClass PD and PClass PD-2P defined in Table 145–29 are determined per the assigned Class. The assigned PSE Class is determined by the number of class events and the PD requested Class, as shown in Table 145–11. **During inrush or in a NOPOWER state, the PD input power limit is not necessarily the same as the PSE assigned Class.**

PClass PD is the maximum average PI power and applies to single-signature PDs. PClass PD-2P is the maximum average power on a pairset and applies to dual-signature PDs.

# Proposed Solution

---

## 145.3.8.2 Input average power

**Add note after the 4th paragraph as follows:**

**NOTE** – While in INRUSH, NOPOWER\_INRUSH, POWER\_DELAY, POWEROFF, and NOPOWER, the PD input power limit is not necessarily the same as the PSE assigned Class.

---

# Thank You!