



Considerations for a successful EFM Standardization Project within IEEE802.3

Steve Jackson
Nortel Networks
RTP, NC
January 2001

The Question

Should IEEE 802.3 form a SG to develop a Standards Project Proposal (PAR & 5 Criteria)?

From the interest that we have seen the obvious answer is - YES!

...but then that brings us to...

Question #2

What is it that we are going to:

- **Standardize?**
- **Evaluate the 5 Criteria against?**

So far, all we have agreed upon is a “market area.”

More Questions:

- ✿ What is the standards focus and environment for EFM?
- ✿ Ethernet from the residence, to where?
- ✿ After we get to “where”, then what?
- ✿ Who are the customers and who are the users?
- ✿ Have we invited network providers and carriers to participate?
- ✿ What are the impacts to existing network infrastructure
- ✿ How will network providers manage EFM?

A BIG Question:

Given that applications used in most EFM target environments are likely to be highly asymmetrical in bandwidth requirements:

What are the odds for commercial success of a standard which, by definition, will require adopters to capitalize a 'reverse' data path equal in cost to the 'forward' path, and which 'reverse' path will likely not generate any appreciable revenue?

Characteristics of a Mass-Market Standard

- **Encompass traditional elements that address requirements of carrier networks**
 - Signaling, Services & Applications, Asset Control, Traffic Management, Provisioning, Billing, Maintenance
- **Can gain acceptance from Service Providers**
 - low cost, minimizes customer disruption, broad acceptance
- **Design allows network providers to support existing infrastructures as they evolve**
- **Support S/W “hooks” with flexibility to introduce services driven by customer markets**

Market Justification for Standard

- **Idealized Access Method**

- Uses a protocol not tied to a specific physical layer architecture; allowing end users flexibility to establish local networks

- **Evolutionary**

- Support existing architecture as new media are deployed; limiting stranded costs and other economic hindrances

- **Optical Technology**

- Continued investment in copper media is ending anyway
 - standard should anticipate this shift and accelerate it ...
 - efficiencies of scale encourage conversion AND competition

- **Realize End-To-End Ethernet**

Market Criteria in opposition to an 802.3 EFM Standard

- Existing Market is Captive to LECs (in the USA) and similar organizations elsewhere
- Dealing with Outside Plant & Local Exchange Carriers is not in the traditional area of expertise for this group.
- There are already too many flavors of DSL, assuming copper media for EFM.
- Irrespective of EFM media, at the end of “the first mile” you are on top of a telephone pole in the middle of nowhere. At best, this is an inhospitable environment.

Market Criteria in opposition to an 802.3 EFM Standard

- **Standardization within 802.3 is NOT a guarantee of success.**
- **Existing copper media is of inconsistent, and often very poor, quality.**
- **The turnover rate for existing media is too slow.**
- **There would be a whole new (to 802.3) set of requirements for:**
 - Environmental conditions
 - Lightning protection
 - Reliability
 - Etc., etc.

Issues & Criteria for Ethernet to the Home

- **Ethernet from the home to where?**
 - What impacts are there to the central office internal plant vs. external plant facilities?
 - What consideration will be given to the craft (telco-speak for labor pool) available?
- **How comprehensive is the scope of the standard effort?**
 - Will 802.3 address Operations Administration, Application Management and Billing for this technology?
 - Is there to be any guidance regarding interoperability with existing residential broadband installed plant?

Conclusions

- **I and my team would like to understand the main intent and primary focus for the EFM work.**
- **Presently we believe further study is required to identify the standards scope and charter that EFM will detail, before the PAR is formally initiated.**
- **We would request 802.3 to perform a preliminary assessment of the actual scope of standards work and possible impacts to existing facilities (CO and Outside Plant).**
- **We would recommend a SG focus that identifies a functional reference model. Specifically but not inclusively, this model would identify the possible termination points, or common reference points, specific for EFM access.**



Graphical Strawman: Offered as a Basis for Talking Points (flames cheerfully extinguished)

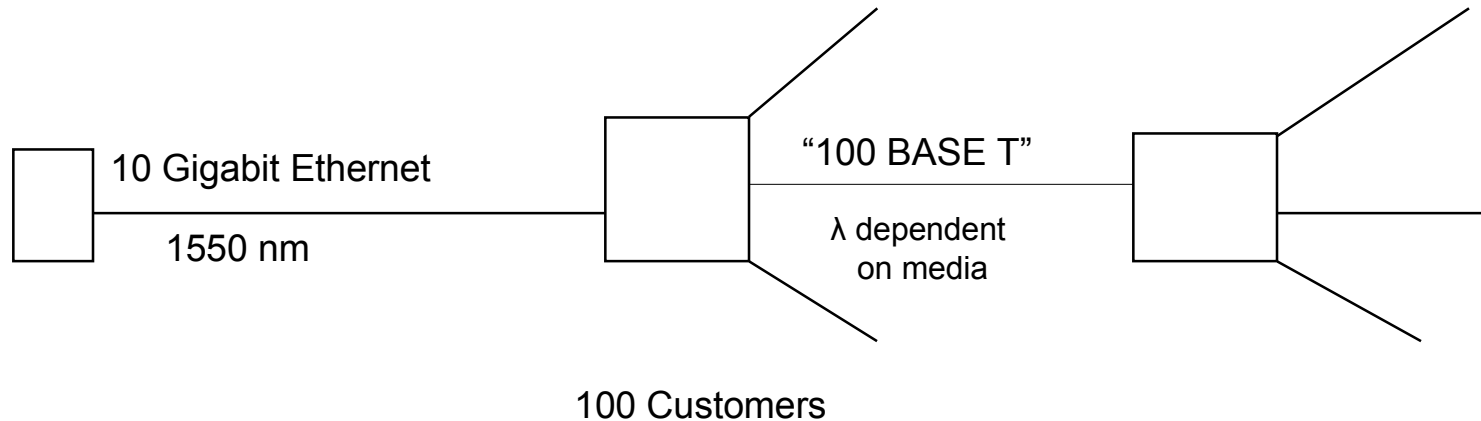
Steve Jackson
Nortel Networks
RTP, NC
January 2001

Distribution Network Strawman

Wiring Center (CO)

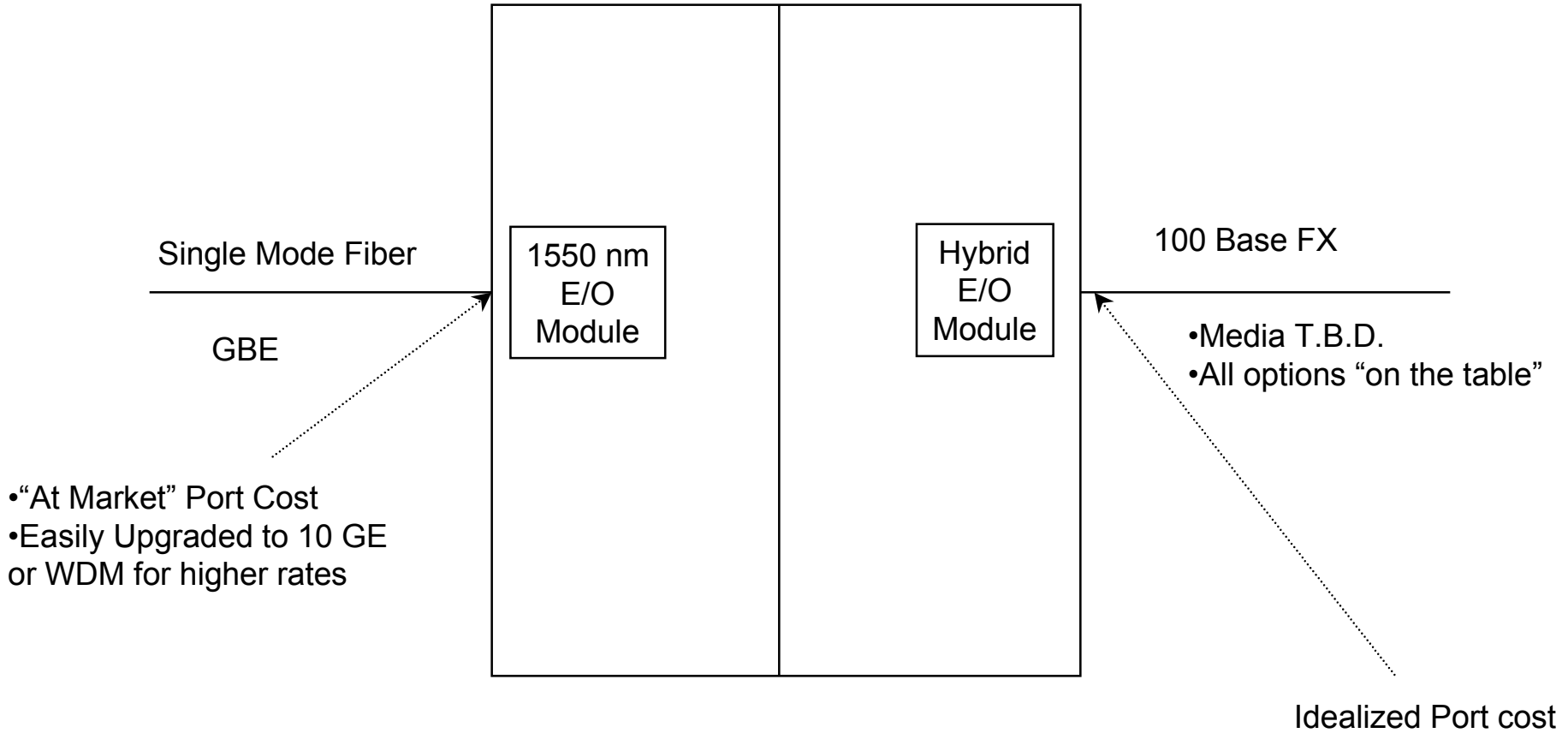
Curb
(pedestal/vault
pole mount)

Customer Premise
Equipment
(CPE) (see detail)



Active Curb

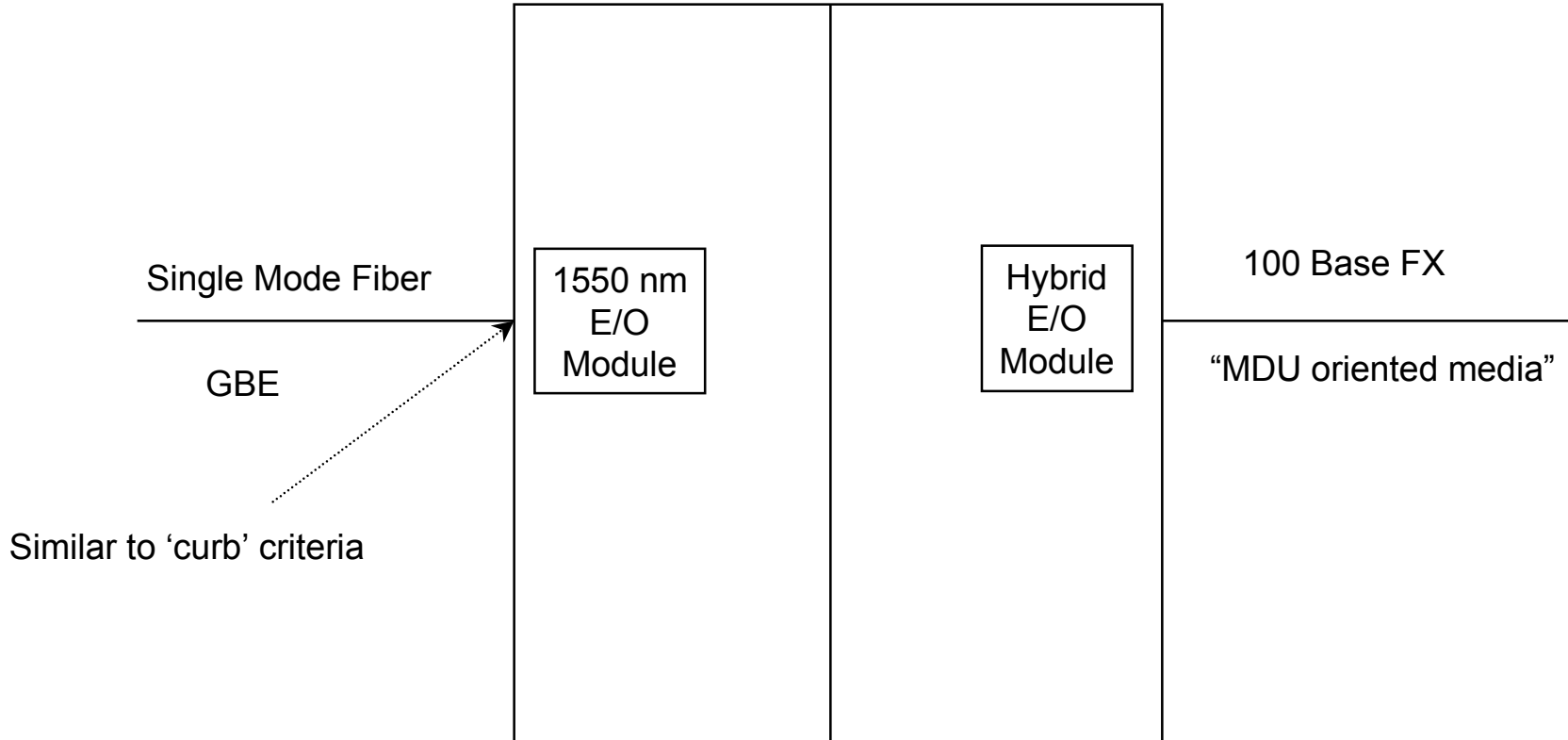
1-30+ Residences



Active MDU

1-30+ Apartments

Also suitable for
urban hybrid deployment
(business & residential users)



Digital Access Gateway (CPE)

