

# Ethernet in the First Mile:

Sergey V. Zakourdaev  
(Individual)

[szakourd@mikron.ru](mailto:szakourd@mikron.ru)

March 12-15, 2001

# Ethernet in the First Mile:

Base line CDMA MAC Protocol (IEEE 802.3) can't meet the QoS requirements.

Ethernet in the First Mile must be :

- All-switched Multi-Service Ethernet
- All services over IP ( IP over Ethernet)

# Ethernet in the First Mile:

Inexpensive Ethernet 0,1/1 Mbps network cards permit customers to get high speed full duplex access to Internet by means of computers (PC,NC,notebook,PDA) via the “client – swiplex – server – Internet” diagram (Fig 1). Swiplex is the switch, which has 10 input channel C Mbps and 1 output channel 10 C Mbps.

Interconnection of customers’ computers (clients) with the Swiplex could be provided by:

- xDSL modems via telephone circuits.
- cable modems via coaxial part of the hybrid fiber/coaxial TV network.
- radio modems of the wireless access networks.

# Ethernet is the First Mile.

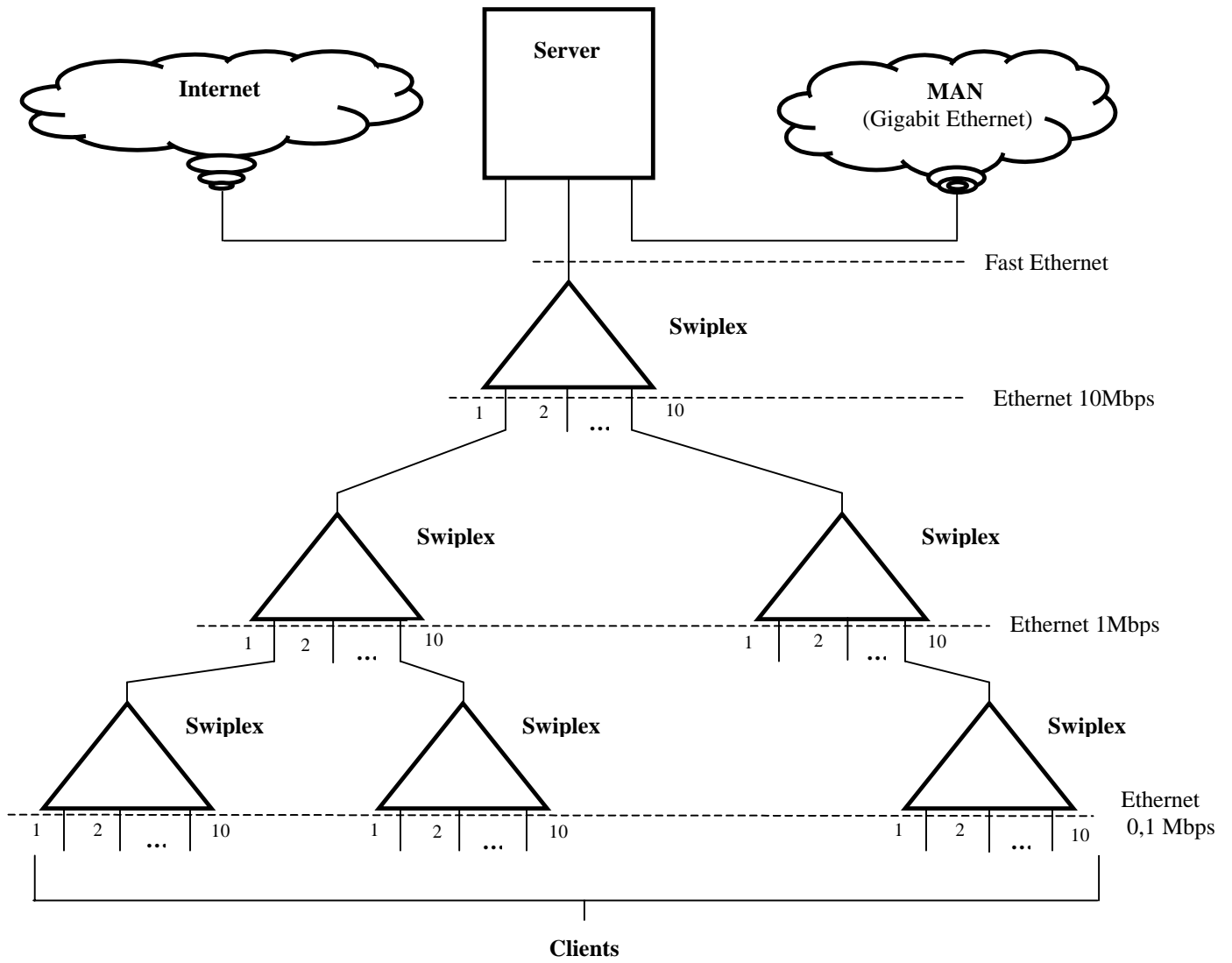


Fig. 1