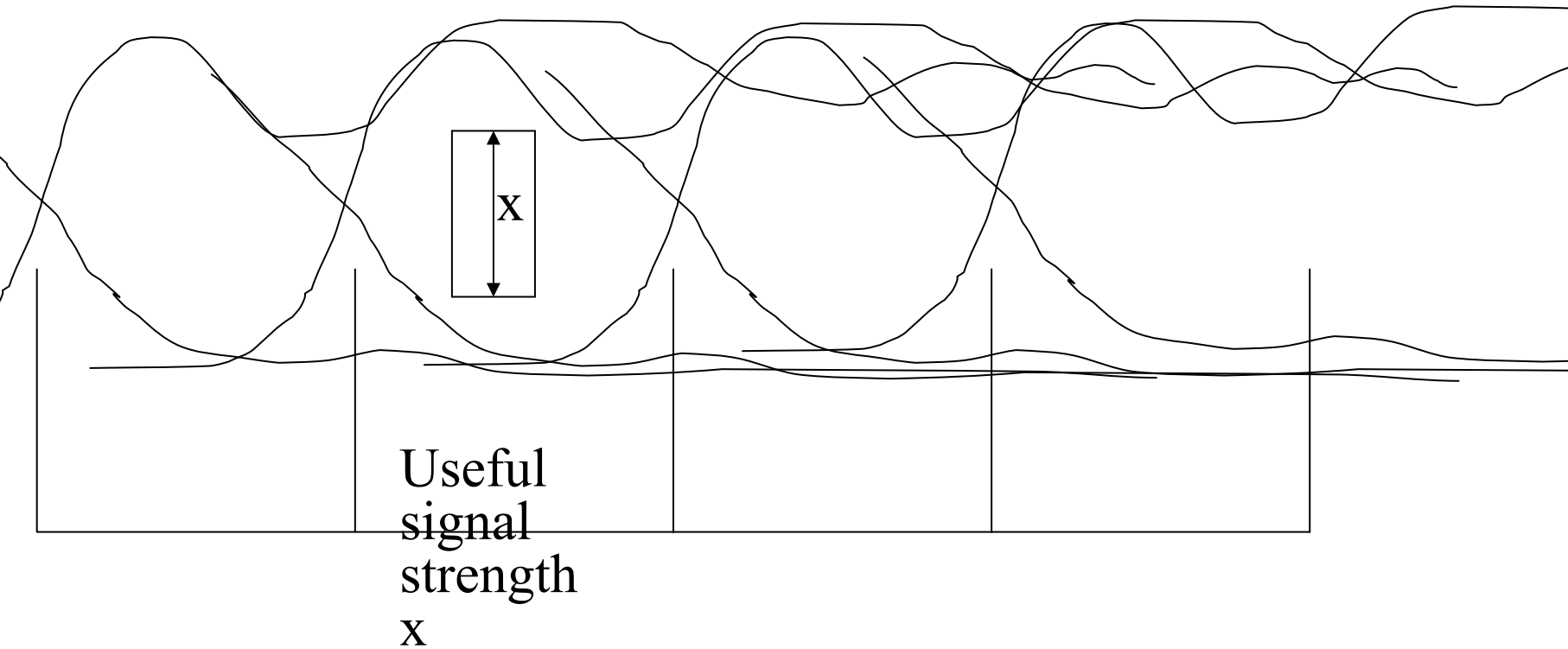
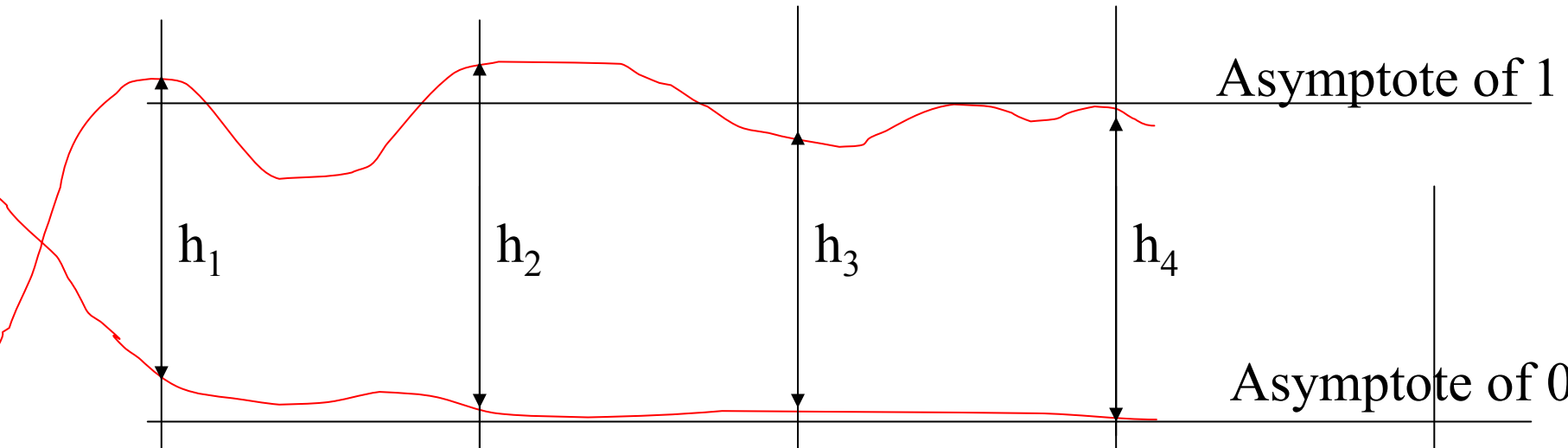


Find an approximation to the settled 0 and 1 levels



Find an approximation to the settled 0 and 1 levels



“OMA”
on 0101
square
wave

“OMA”
on 0011
square
wave

“OMA” on
000111
square
wave (3+3)

“OMA” on
00001111
square
wave (4+4)

and so
on...

What matters for product Tx?

- $OMA = h$
 - $OMA-TDP = x$
 - $TDP = h/x$
- Y, must be less than maximum
- or Y, must exceed minimum
- or Y, must exceed minimum
- A low value of h flatters the recorded TDP
 - A high value of h flatters the recorded OMA but does not affect the integrity of the link