

*Modify definition of MA\_DATA primitives in sub-clause 77.2.2.6, page 671, line 29 as shown below:*

MAC:MA\_DATA.indication(DA, SA, m\_sdu, receiveStatus)

The service primitive is defined in 31.32.3.2.

MCF:MA\_DATA.indication(DA, SA, m\_sdu, receiveStatus)

The service primitive is defined in 31.3.

MAC:MA\_DATA.request (DA, SA, m\_sdu)

The service primitive is defined in 31.32.3.2. The action invoked by this service primitive is not considered to end until the transmission of the frame by the MAC has concluded. The ability of the MAC control layer to determine this is implementation dependent.

MCF:MA\_DATA.request (DA, SA, m\_sdu)

The service primitive is defined in 31.3.

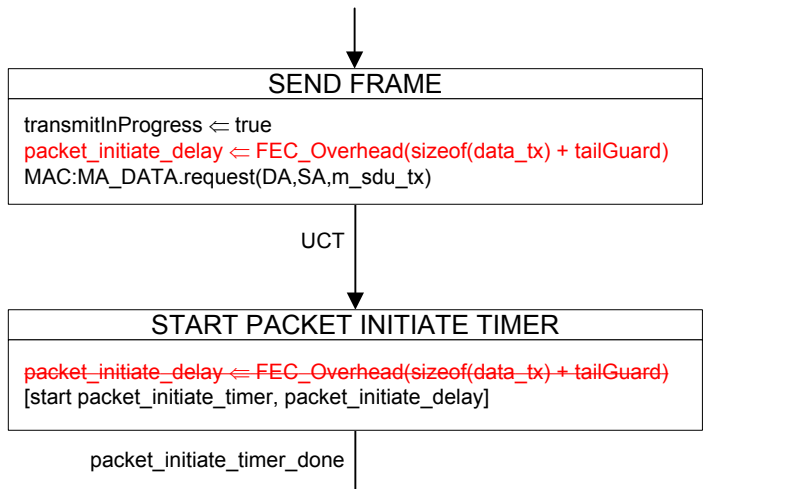
*Modify definition of FEC\_Overhead function in Sub-clause 77.2.2.4, page 670, line 31 as shown below:*

FEC\_Overhead(length)

This function calculates the additional amount of time (in octet times) that the MPCP control multiplexer waits following transmission of a frame of size 'length' by the MAC. The additional time is added so as to allow the insertion of parity data into the frame by the PHY layer. As described in 76.3.2.4, FEC encoder adds 32 parity octets for each block of 216 data or control octets. FEC\_Overhead() returns the number of octets that the PHY inserts during transmission of a particular packet and its subsequent IPG. Parameter 'length' represents the size of an entire frame including preamble, SFD, DA, SA, Length/Type, FCS, and IPG. The following formula is used to calculate the overhead:

$$\text{FEC\_Overhead}(\text{length}) = \text{length}12 + \text{FEC\_PARITY\_SIZE} \times \left\lfloor \frac{\text{fecOffset} + \text{length}}{\text{FEC\_PAYLOAD\_SIZE}} \right\rfloor$$

Modify the state diagram in Figure 77-13 as shown below:



Modify the state diagram in Figure 77-14 as shown below:

