

**IEEE 802.3aq
10GBASE-LRM
Task Force**

Report to IEEE 802.3 CSMA/CD WG

PortLand, OR
12 JULY 2004

Outline

- **Officers**
- **Reflector and web**
- **Standards process**
- **10GBASE-LRM Objectives**
- **Interim meeting report**
- **10GBASE-LRM Timeline**
- **Goals for this meeting**
- **Agenda for this meeting**

IEEE 802.3aq Officers

David Cunningham, Chair, david_cunningham@agilent.com

Nick Wiener, Editor, nick.weiner@phyworks-ic.com

Reflector and WEB

There is a reflector set up

To subscribe, use this URL:

- <http://grouper.ieee.org/groups/802/3/aq/reflector.html>

To subscribe via e-mail send this message

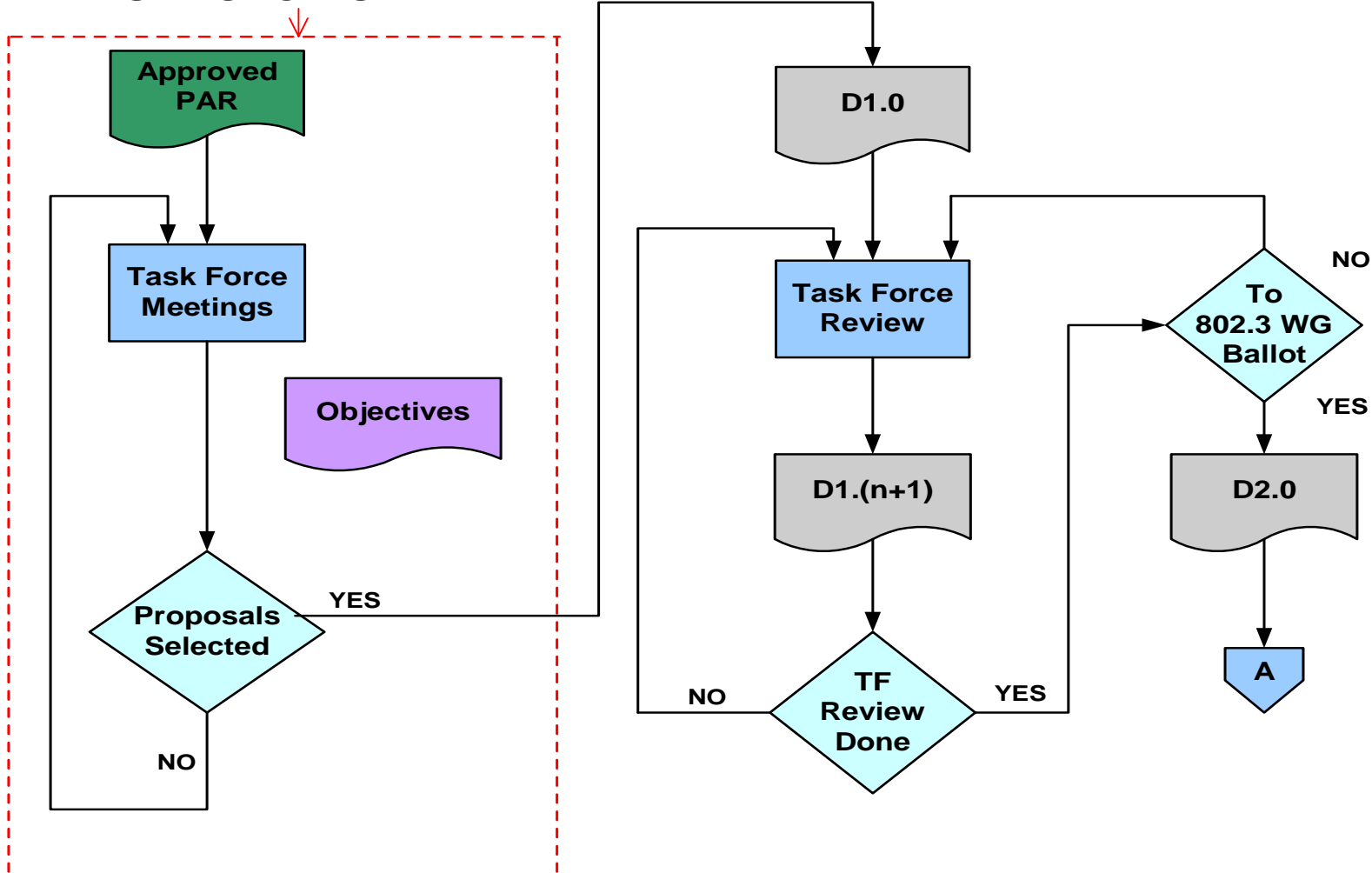
- [stds-802-3-10gmmf <yourfirstname> <yourlastname>](mailto:stds-802-3-10gmmf<yourfirstname><yourlastname>@ieee.org)
to ListServ@ieee.org

10GMMF Study Group web page URL:

- <http://grouper.ieee.org/groups/802/3/aq/index.html>

IEEE STANDARDS PROCESS (The role of a Task Force)

TASK FORCE IS HERE



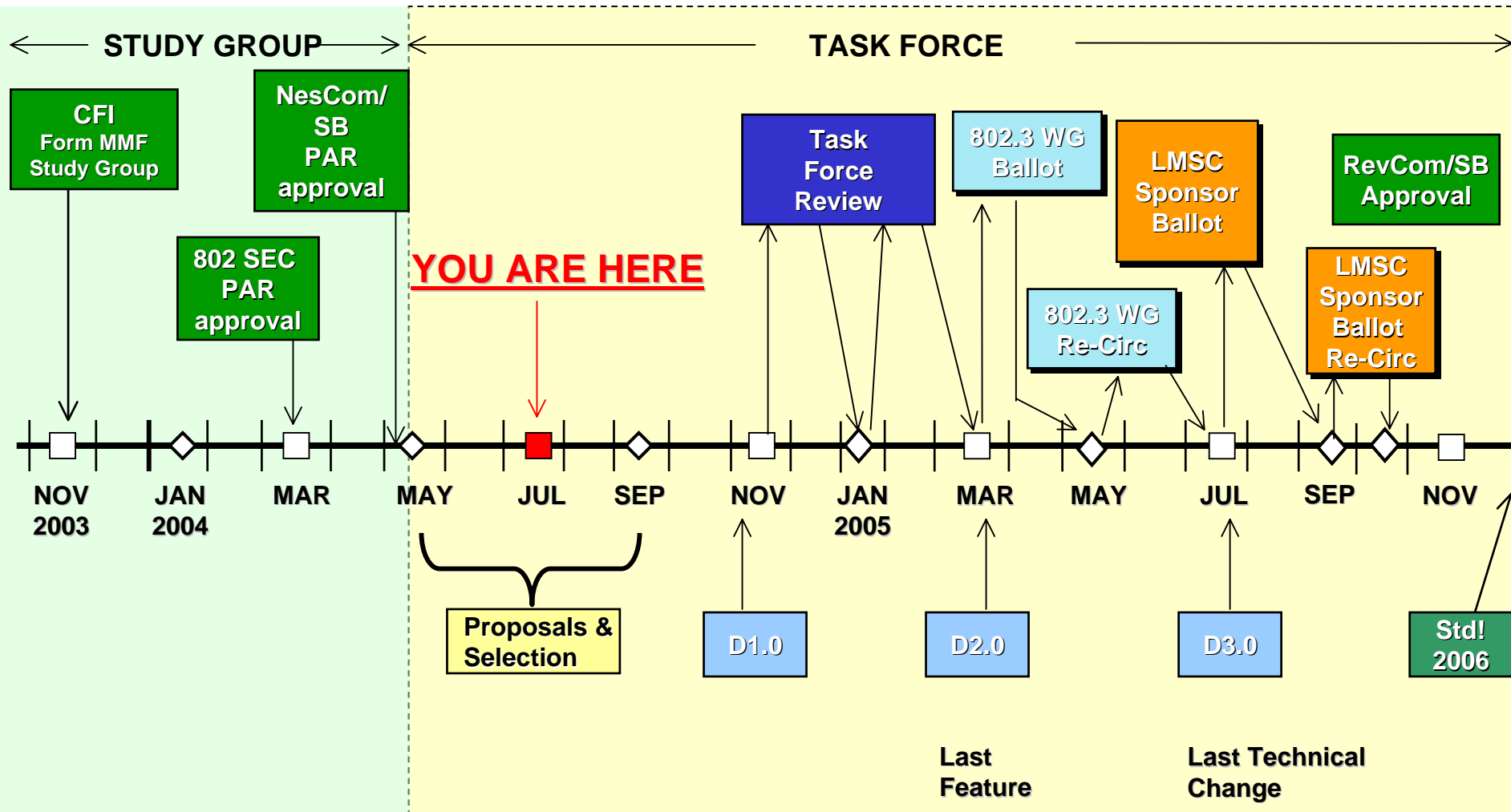
OBJECTIVES

- **Use the existing 10GBASE-R PCS**
- **Support a BER of better than or equal to 10^{-12}**
- **Support fiber media selected from IEC 60793-2-10: 2003**
- 62.5 μ m
 - 160/500 MHz-km (A1b, 60793-2-10:2003)
 - 200/500 MHz-km (A1b, 60793-2-10:2003)
- 50 μ m
 - 500/500 MHz-km (A1a.1, 60793-2-10:2003)
 - 400/400 MHz-km (A1a.1, 60793-2-10:2003)
 - 1500/500 MHz-km (A1a.2, 60793-2-10:2003)
- **Provide a Physical Layer specification which supports link distances of:**
 - at least 220m on installed 500MHz.km multimode fiber
 - at least 300m on selected multimode fiber

Long Beach interim meeting

- We became a Task Force and held our first meeting!
- 2 day meeting
- ~ 80 attendees
- 18 presentations
- Agreed a straw-man timeline for the project
- Created MMF Channel Ad Hoc

10GBASE-LRM DRAFT TIMELINE



Announced Goals for this week.

- **To adopt a baseline fiber model for 62/125 FDDI-grade fiber.**
- **To select baseline technologies for the standard.**
- **To direct the editor to draft the initial baseline draft for review at the next interim meeting.**

Proposed Agenda,

Tuesday 13 July

08:00 AM	Opening Remarks
08:40 AM	Ad Hoc Reports
10:10 AM	Break
10:30 AM	MMF Modeling & Measurements 1
12:00	Lunch
1:00 PM	MMF Modeling & Measurements 2
3:00 PM	Break
3:25 PM	Technology Proposals & Comparisons
5:40 PM	Adjourn for day

Proposed Agenda, Wednesday 14 July

08:00 AM	Meeting Start
08:20 AM	Open period for late presentations
09:20 AM	EDC Baseline Proposal
12:00	Lunch
1:30 PM	Closing Session and Motions
3:00 PM	Break
5:00 PM	End of 10GBASE-LRM TF Meetings

- **Thursday 15 July: Expect Ad Hoc to meet.**
- **All meetings will be in meeting room: Queen Marie**