

802.1au BCN evaluation:
BCN-MAX
Dynamic Range

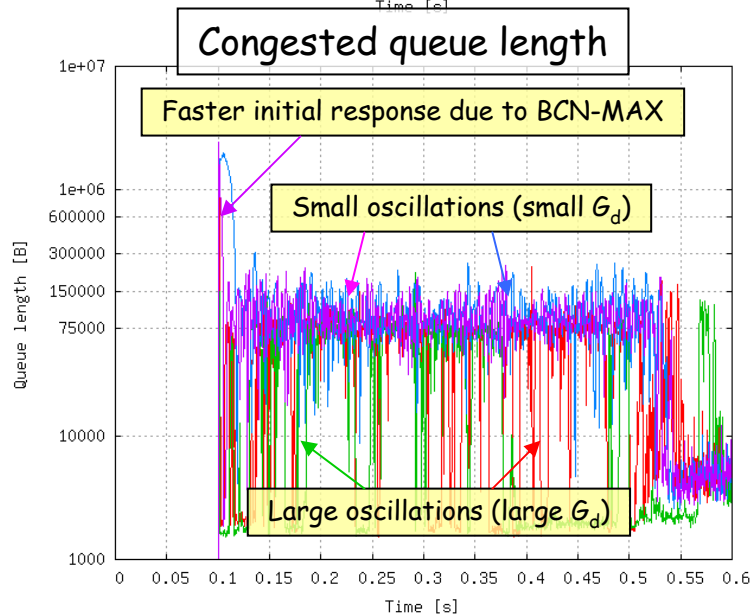
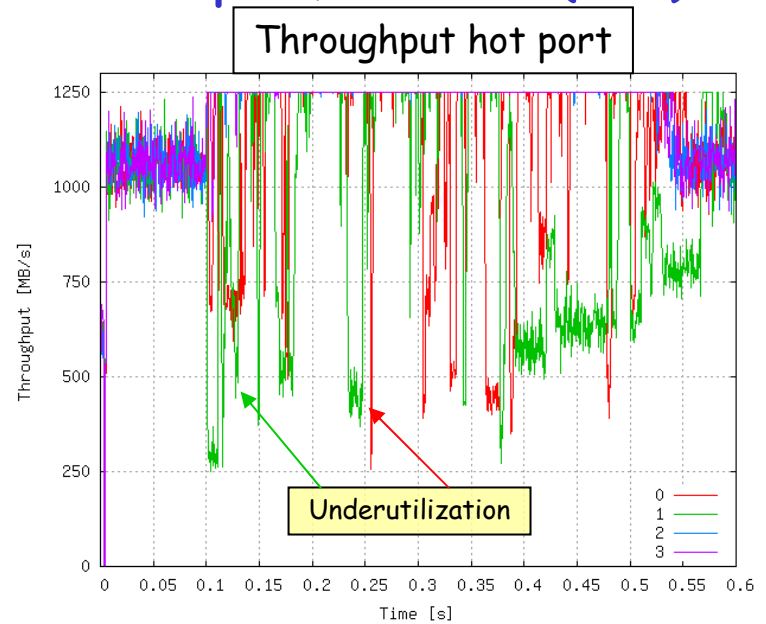
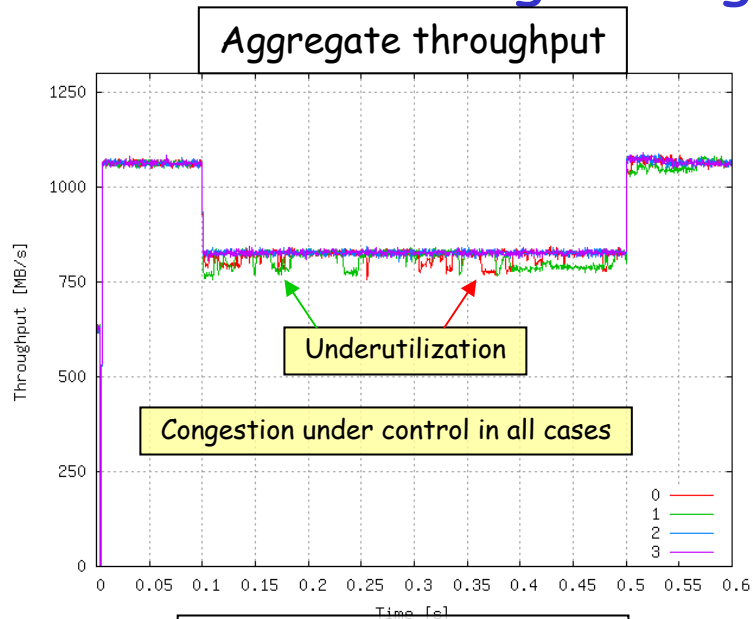
Cyriel Minkenbergh & Mitch Gusat
IBM Zurich Research Lab

Simulation Setup

- 16 ports, single-stage
- Load = 85%
- Uniform destination distribution
- 1500 B frames
- Partitioned memory
- Lossless operation
 - PAUSE applied on a per input basis based on local high/low watermarks
 - $\text{watermark}_{\text{high}} = M - r_{\text{tt}} * \text{bw}$
 - $\text{watermark}_{\text{low}} = \text{watermark}_{\text{high}} / 2$

- $W = 2.0$
- $M = 300 \text{ KB}$
- $Q_{\text{eq}} = M/4$
- $Q_{\text{sc}} = (\text{watermark}_{\text{high}} + \text{watermark}_{\text{low}})/2$
- $G_{\text{d0}} = 1 / ((2W+1) * Q_{\text{eq}}) = 4/(5 * Q_{\text{eq}})$
- $G_{\text{i}} = 400 * G_{\text{d}}$
- $R_{\text{u}} = R_{\text{min}} = 10 \text{ Mb/s}$
- No BCN(0,0), no self-increase

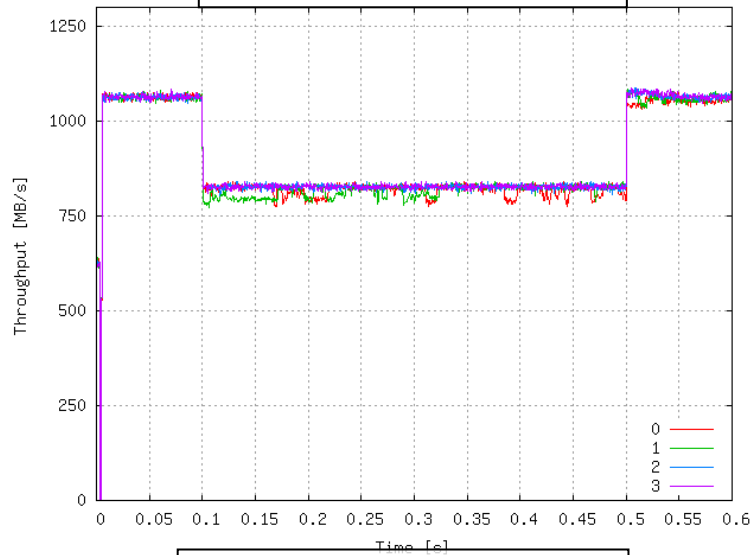
BCN-MAX: Single-stage IG hotspot, N = 16 (PM)



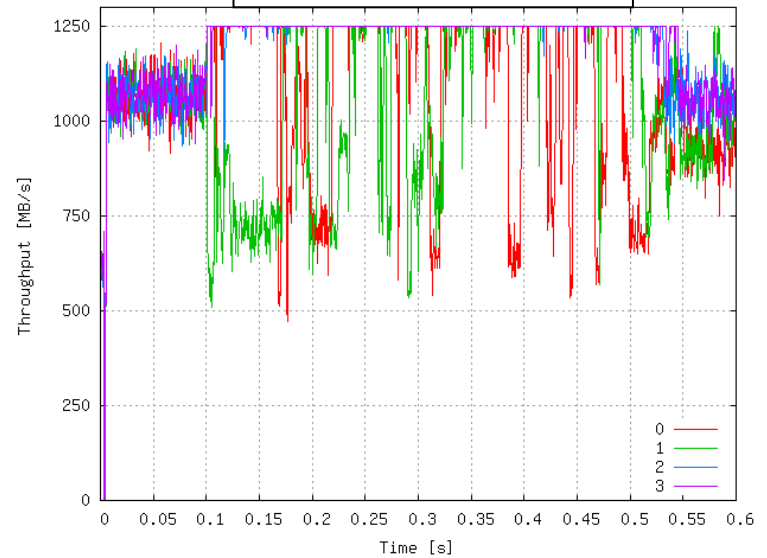
$P_s = 2\%$, $G_d = 2.5 \cdot G_{d0}$, BCN-MAX off
 $P_s = 2\%$, $G_d = 2.5 \cdot G_{d0}$, BCN-MAX on
 $P_s = 2\%$, $G_d = 0.5 \cdot G_{d0}$, BCN-MAX off
 $P_s = 2\%$, $G_d = 0.5 \cdot G_{d0}$, BCN-MAX on

BCN-MAX: Single-stage IG hotspot, $N = 16$ (SM)

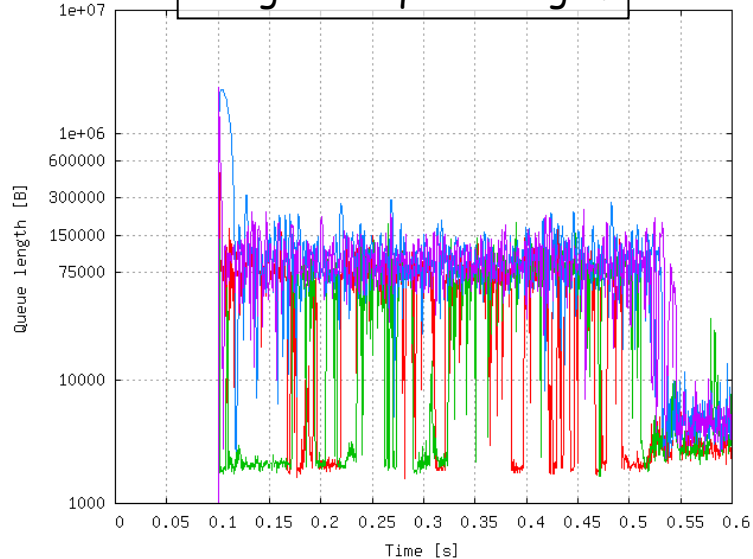
Aggregate throughput



Throughput hot port

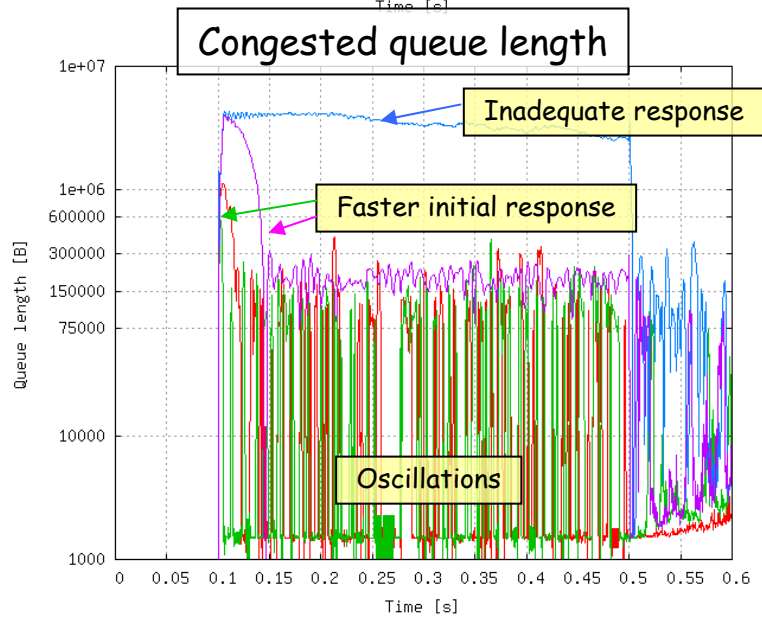
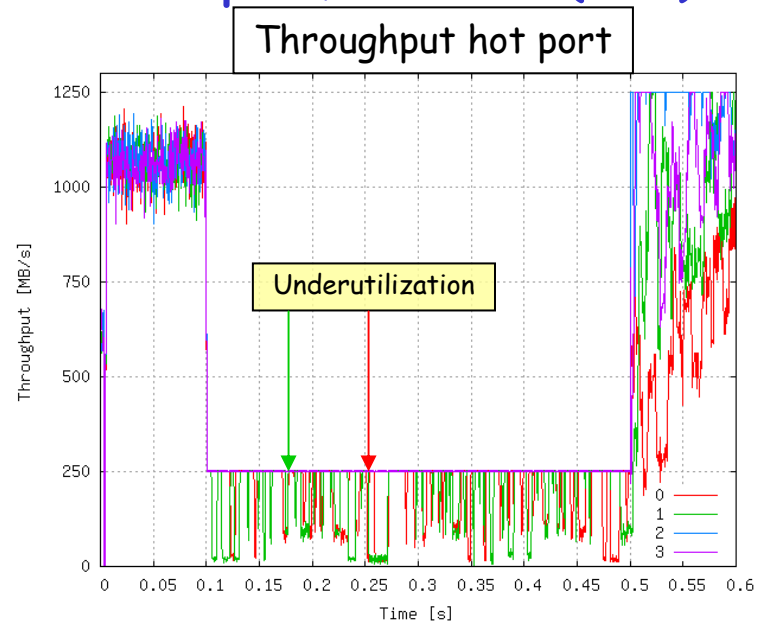
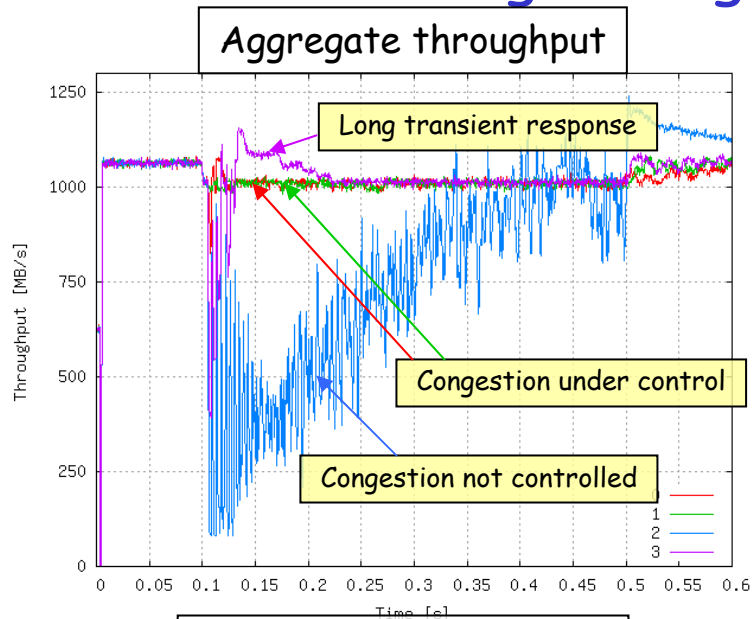


Congested queue length



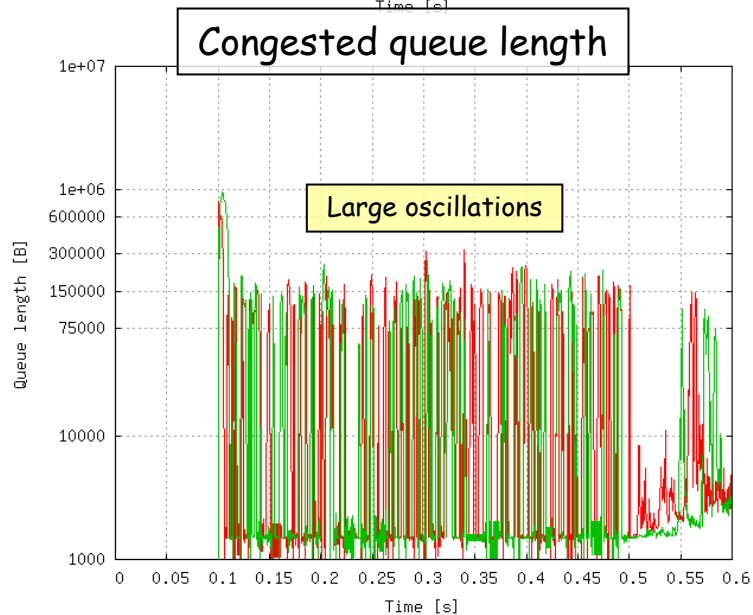
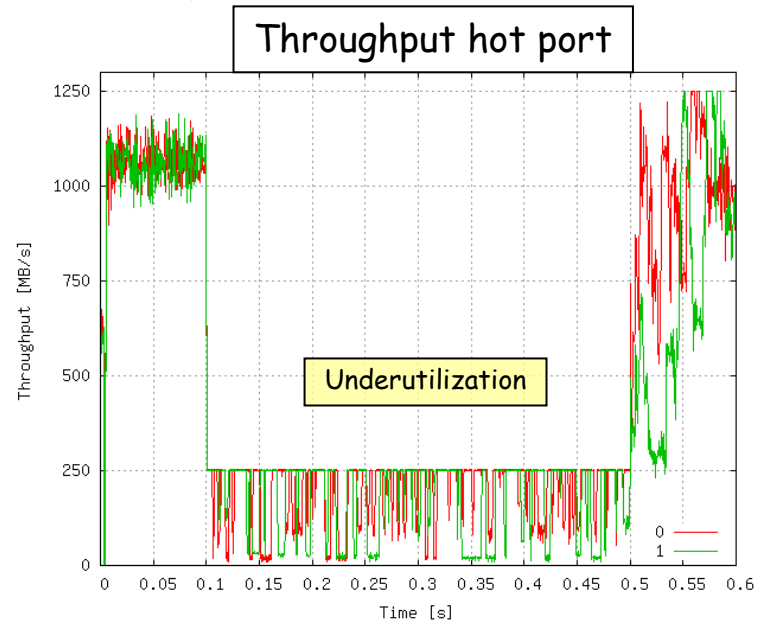
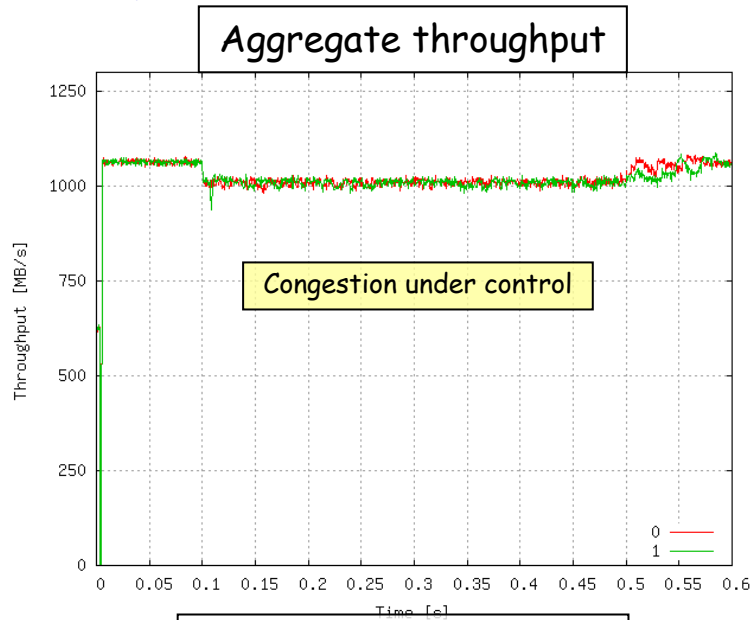
$P_s = 2\%$, $G_d = 2.5 \cdot G_{d0}$, BCN-MAX off
 $P_s = 2\%$, $G_d = 2.5 \cdot G_{d0}$, BCN-MAX on
 $P_s = 2\%$, $G_d = 0.5 \cdot G_{d0}$, BCN-MAX off
 $P_s = 2\%$, $G_d = 0.5 \cdot G_{d0}$, BCN-MAX on

BCN-MAX: Single-stage OG hotspot, N = 16 (PM)



$P_s = 2\%$, $G_d = 2.5 \cdot G_{d0}$, BCN-MAX off
 $P_s = 2\%$, $G_d = 2.5 \cdot G_{d0}$, BCN-MAX on
 $P_s = 2\%$, $G_d = 0.5 \cdot G_{d0}$, BCN-MAX off
 $P_s = 2\%$, $G_d = 0.5 \cdot G_{d0}$, BCN-MAX on

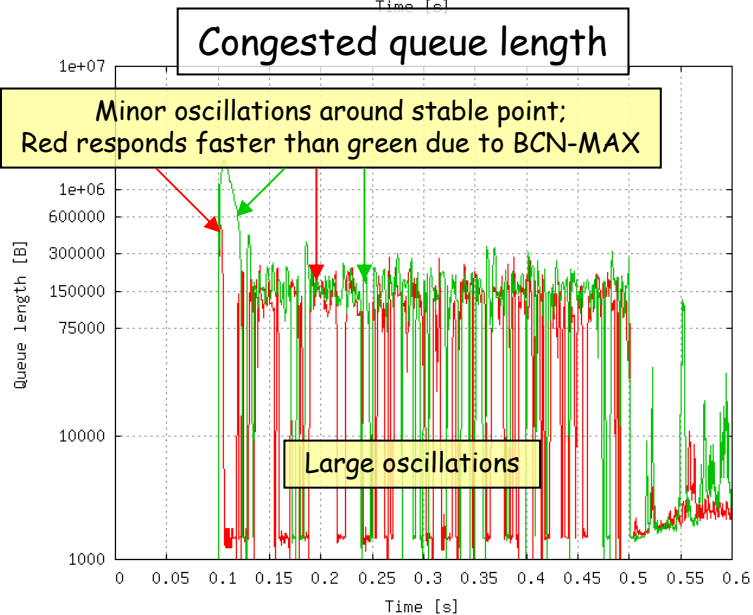
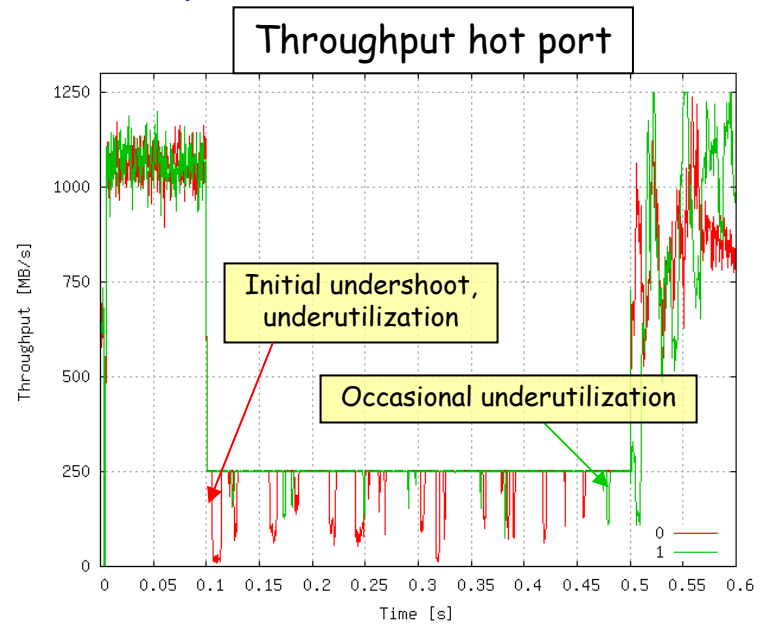
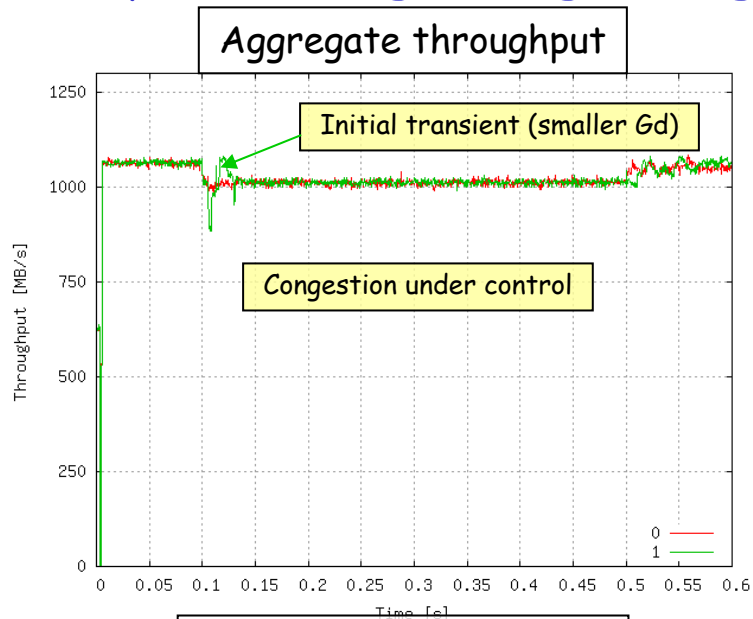
Dynamic range: Single-stage OG hotspot, N = 16, DRF = 1



$P_s = 2\%$, $G_d = 2.5 \cdot G_{d0} / DRF$, BCN-MAX on
 $P_s = 2\%$, $G_d = 2.5 \cdot G_{d0} / DRF$ BCN-MAX off

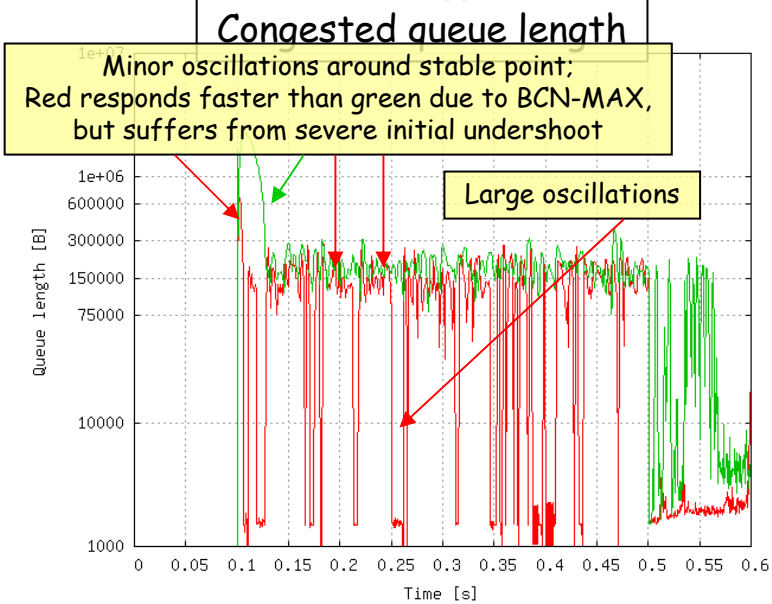
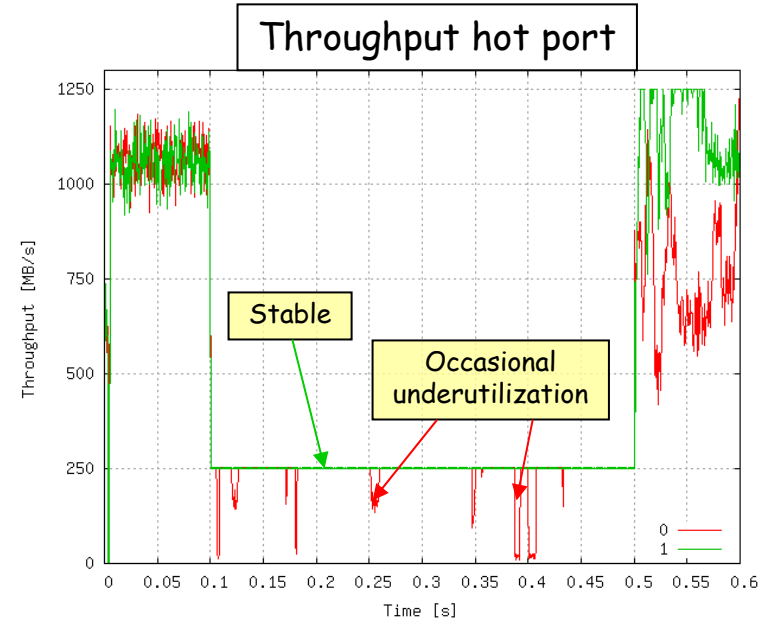
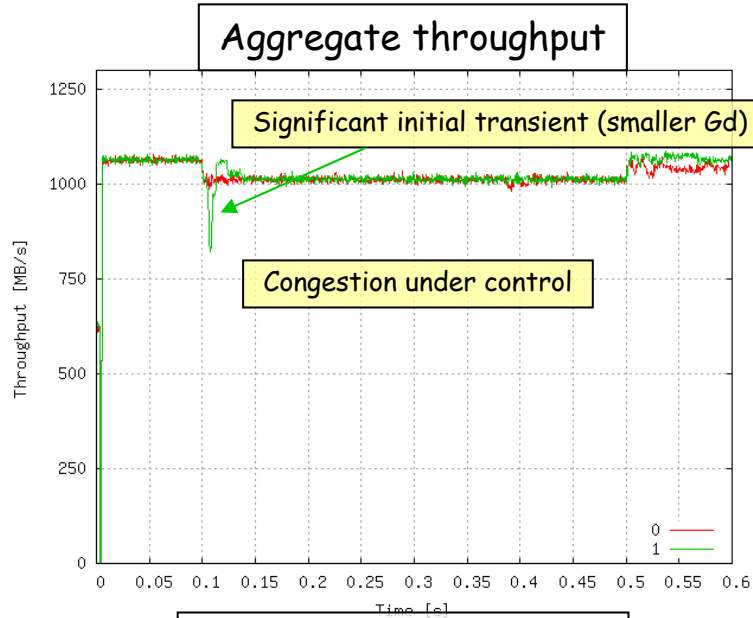
DRF = dynamic range factor

Dynamic range: Single-stage OG hotspot, $N = 16$, $DRF = 2$



$P_s = 2\%$, $G_d = 2.5 \cdot G_{d0} / DRF$, BCN-MAX on
 $P_s = 2\%$, $G_d = 2.5 \cdot G_{d0} / DRF$, BCN-MAX off

Dynamic range: Single-stage OG hotspot, N = 16, DRF = 4



$P_s = 2\%$, $G_d = 2.5 * G_{d0} / DRF$, BCN-MAX on
 $P_s = 2\%$, $G_d = 2.5 * G_{d0} / DRF$ BCN-MAX off