

Revised Layer Diagrams for 802.1AS

Geoffrey M. Garner
SAMSUNG Electronics (Consultant)

IEEE 802.1 AVB TG
2008.02.05

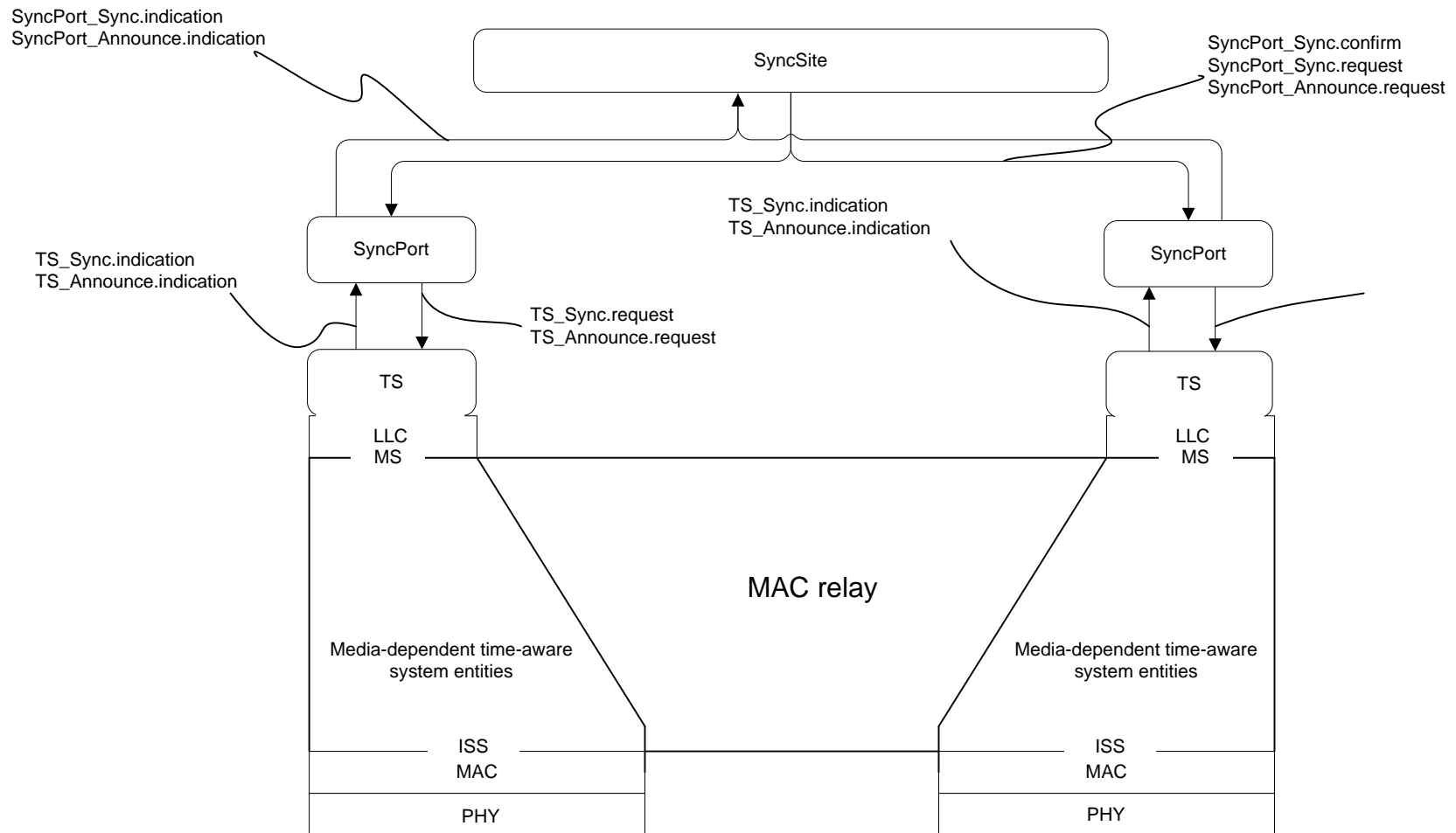
gmgarner@comcast.net

Summary

- ❑ The following four slides contain revised layer diagrams for 802.1AS, based on discussions of Draft D1.1 at the January, 2008 AVB TG meeting, and in the February 4, 2008 802.1AS call
- ❑ The diagrams include
 - Media independent layers for a time-aware bridge
 - Media independent and full-duplex, point-to-point link media-dependent layers for a time-aware bridge
 - Media independent layers for a time-aware end station
 - Media independent and full-duplex, point-to-point link media-dependent layers for a time-aware end station

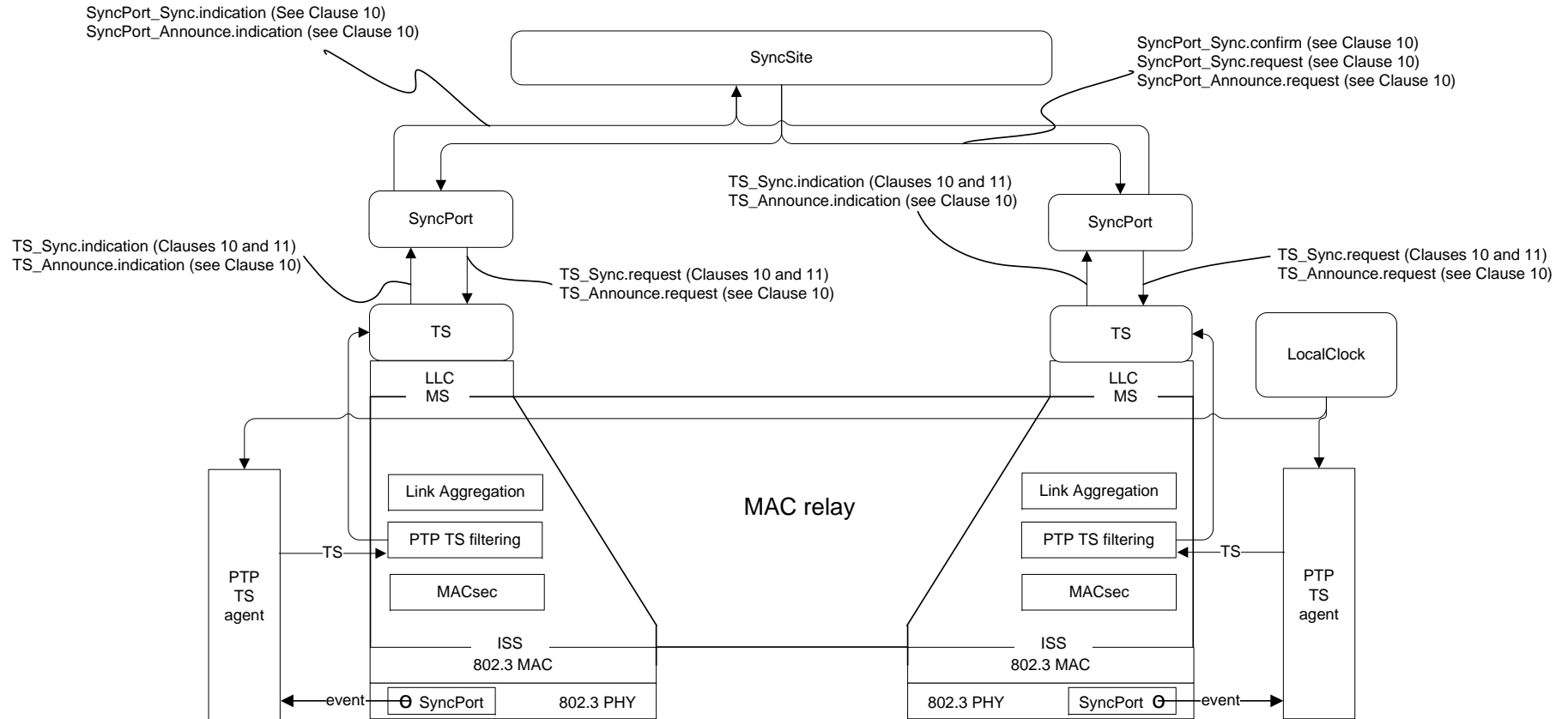
Time-aware bridge media-independent layers

<<Editor's Note: Would PortSync be a better name for the per-port media-independent entity? If so, would SiteSync or some other name where "Sync" is at the end rather than at the beginning be better for the central entity?>>



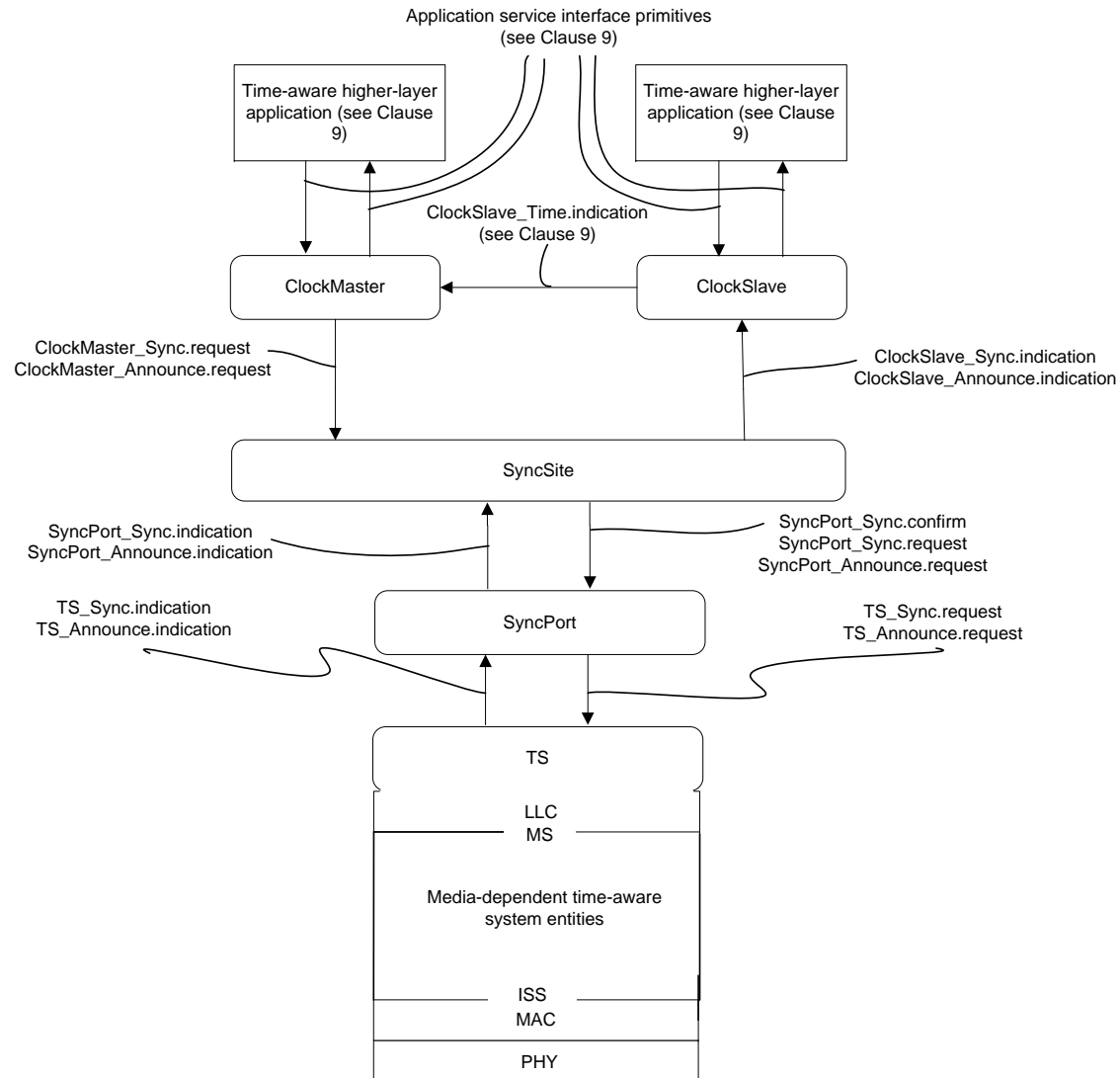
Time-aware bridge media-independent and full-duplex point-to-point link media-dependent layers

<<Editor's Note: Would PortSync be a better name for the per-port media-independent entity? If so, would SiteSync or some other name where "Sync" is at the end rather than at the beginning be better for the central entity?>>



Time-aware end station media-independent layers

<<Editor's Note: Would PortSync be a better name for the per-port media-independent entity? If so, would SiteSync or some other name where "Sync" is at the end rather than at the beginning be better for the central entity?>>



Time-aware end station media-independent and full-duplex point-to-point link media-dependent layers

<<Editor's Note: Would PortSync be a better name for the per-port media-independent entity? If so, would SiteSync or some other name where "Sync" is at the end rather than at the beginning be better for the central entity?>>

