

802.11aa LB164 – Status of ‘Interworking with 802.1Qat’ comments

Date: 2010-07-15

Authors:

Name	Affiliation	Address	Phone	email
Ganesh Venkatesan	Intel Corporation	JF3-336 2111NE 25 th Ave	+1 503 334 6720	Ganesh.Venkatesan@intel.com

Abstract

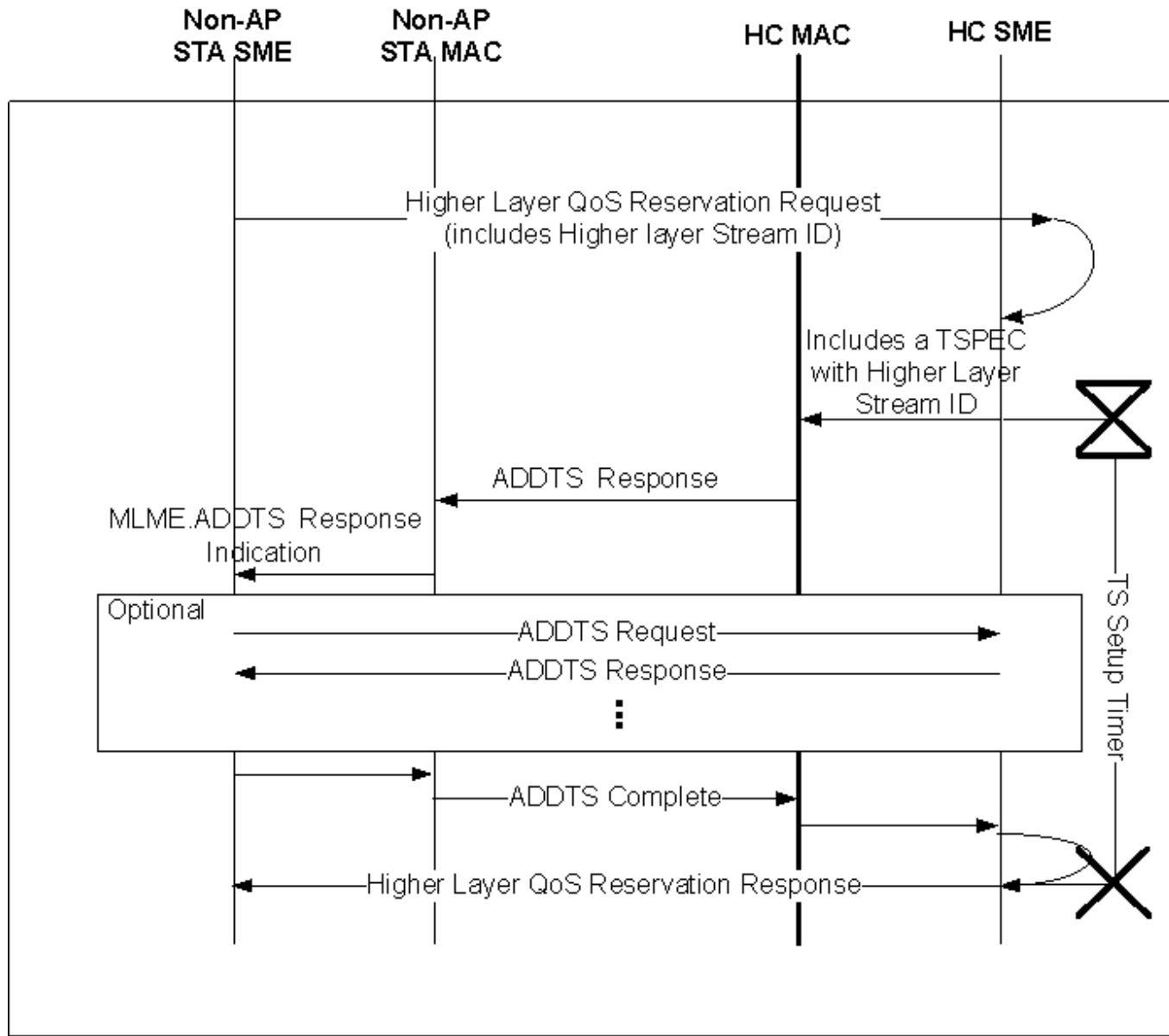
LB164 generated 40 comments related to the Interworking with 802.1Qat feature of 802.11aa LB164

There are proposed resolutions for all 40 comments

A few comments need to be discussed in this joint meeting

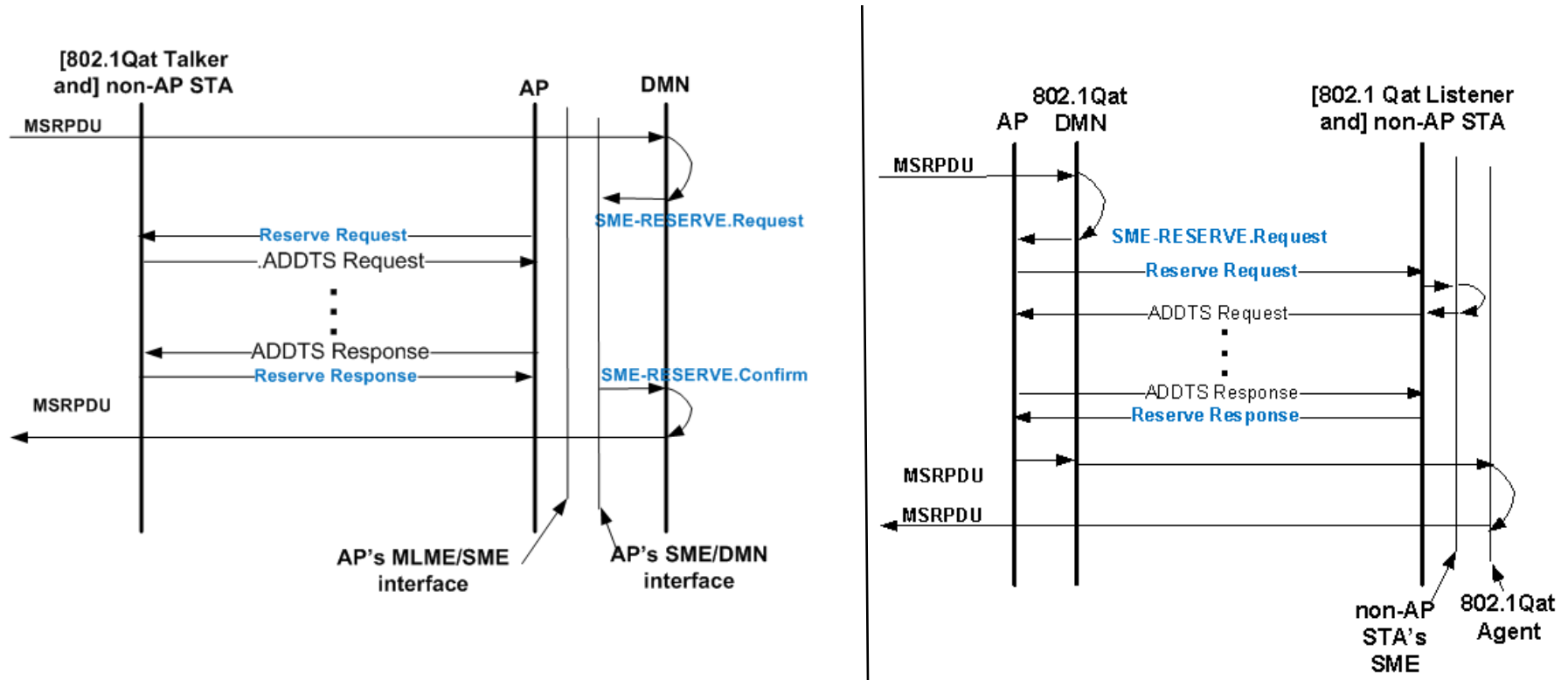
- 1.CID #12 Legacy STA behavior to AP initiated TS setup*
- 2.CID #770 (#712) on the choice of solution to enable SRP in 802.11*

CID #12



CID #770/#712

Alternate Proposal-B -- MSRP Handling at AP/DMN (to Talker/Listener)



1. Need a new "Reserve" management frame between AP to STA
2. STA at Talker end does not have to parse SRP messages; no additional processing in 802.11
3. No synchronization issues
4. Addresses all issues listed in slide-10

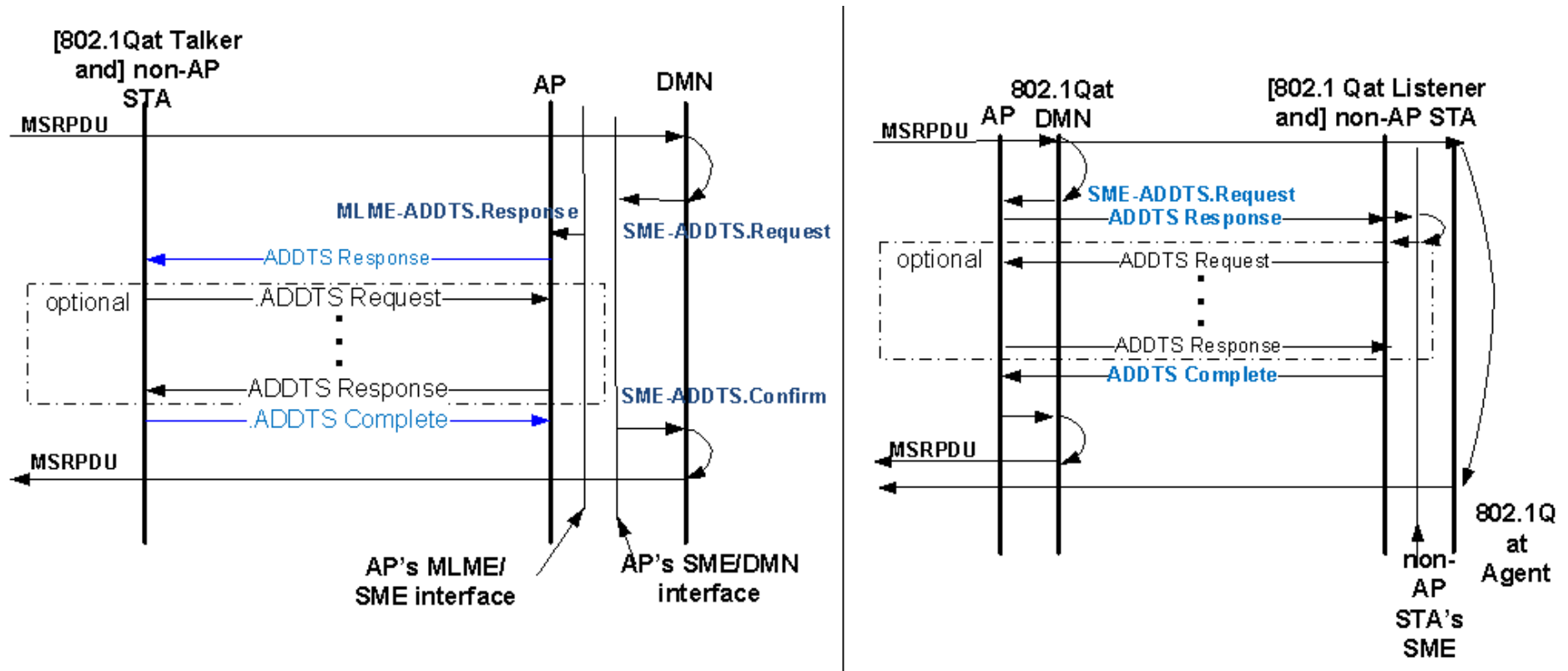
What is in the Reserve Request?

1. TSPEC Element with parameters set to values derived from information in the MSRPDU
2. Optionally TCLAS and TCLAS Processing elements.

What is in the Reserve Response?

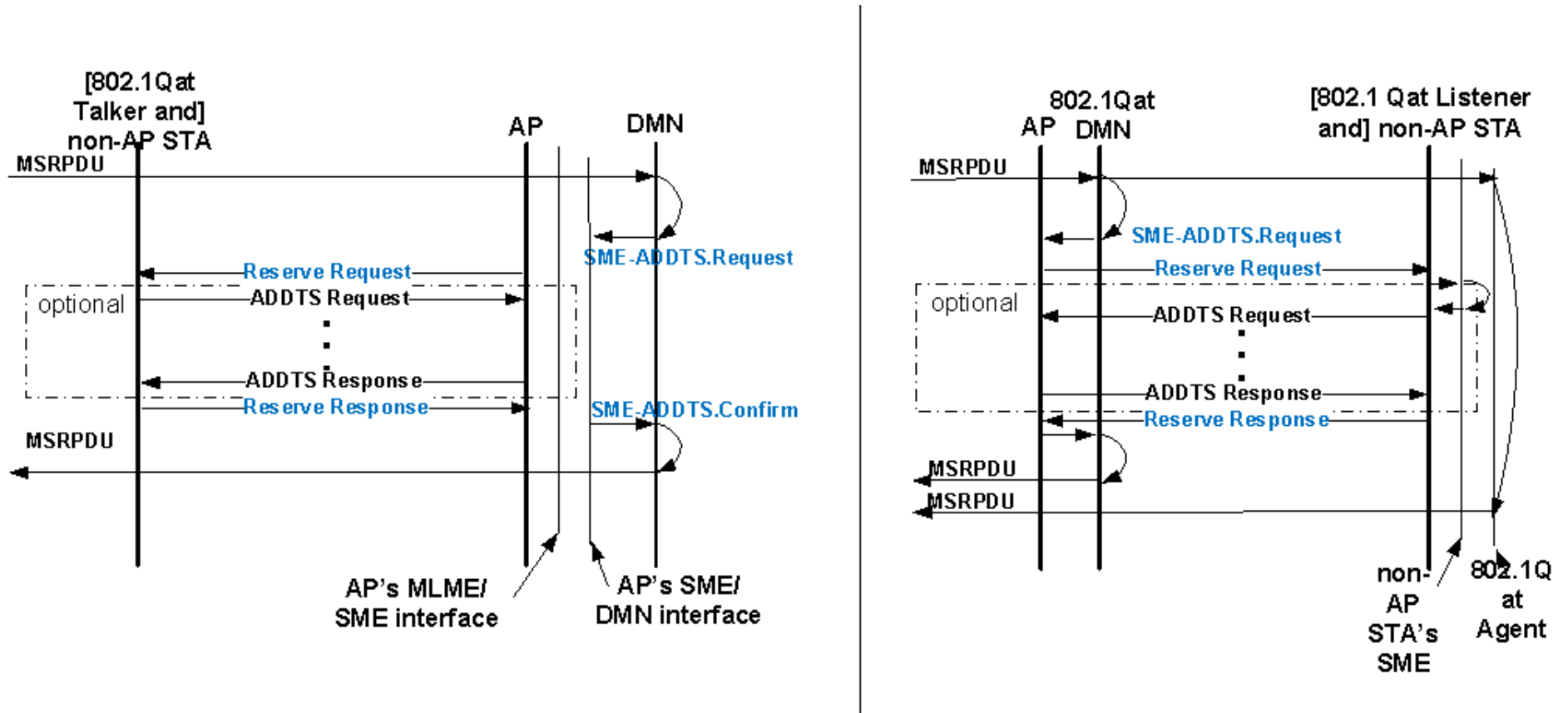
A Status Code corresponding to the Success/Failure of TSPEC/TCLAS negotiation between the AP and the STA

MSRPDU Reserve: Proposal 2.a



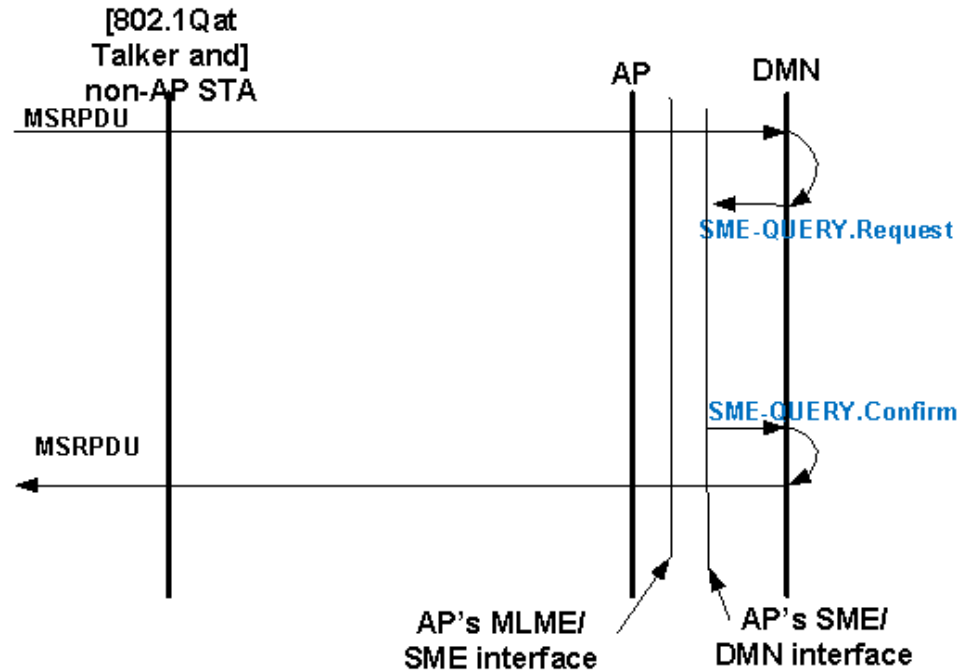
1. First ADDTS Response is autonomous
2. ADDTS Request and ADDTS Response have a new IE – MSR Stream ID (64 bits)
3. ADDTS Complete is same as Reserve Response and just has MSR Stream ID and Status IEs in it.

MSRPDU Reserve: Proposal 2.b



1. Reserve Request has a TSPEC element in it.
2. ADDTS Request and ADDTS Response have a new IE – MSR Stream ID (64 bits)

MSRPDU Query



1. MSRPDU Querying for resource availability forwarded to the AP from the non-AP STA
2. The DMN at the AP translates the MSRPDU into equivalent 802.11 TSPEC and invokes the SME-QUERY.Request
3. The SME at the AP responds back to the DMN at the AP using the SME-QUERY.confirm primitive
4. There are no 802.11 messages over the air to complete this protocol

Straw Polls

- 1. Should we stay with just the current solution (Slide-7)? 3/9*
- 2. Which of the following alternate proposals do you prefer (Y/N)?*
 - a. Proposal 2.a in Slide-17(10/2)*
 - b. Proposal 2.b in Slide-18 (9/2)*
 - c. Do you prefer 2.a over 2.b? (9/2)*