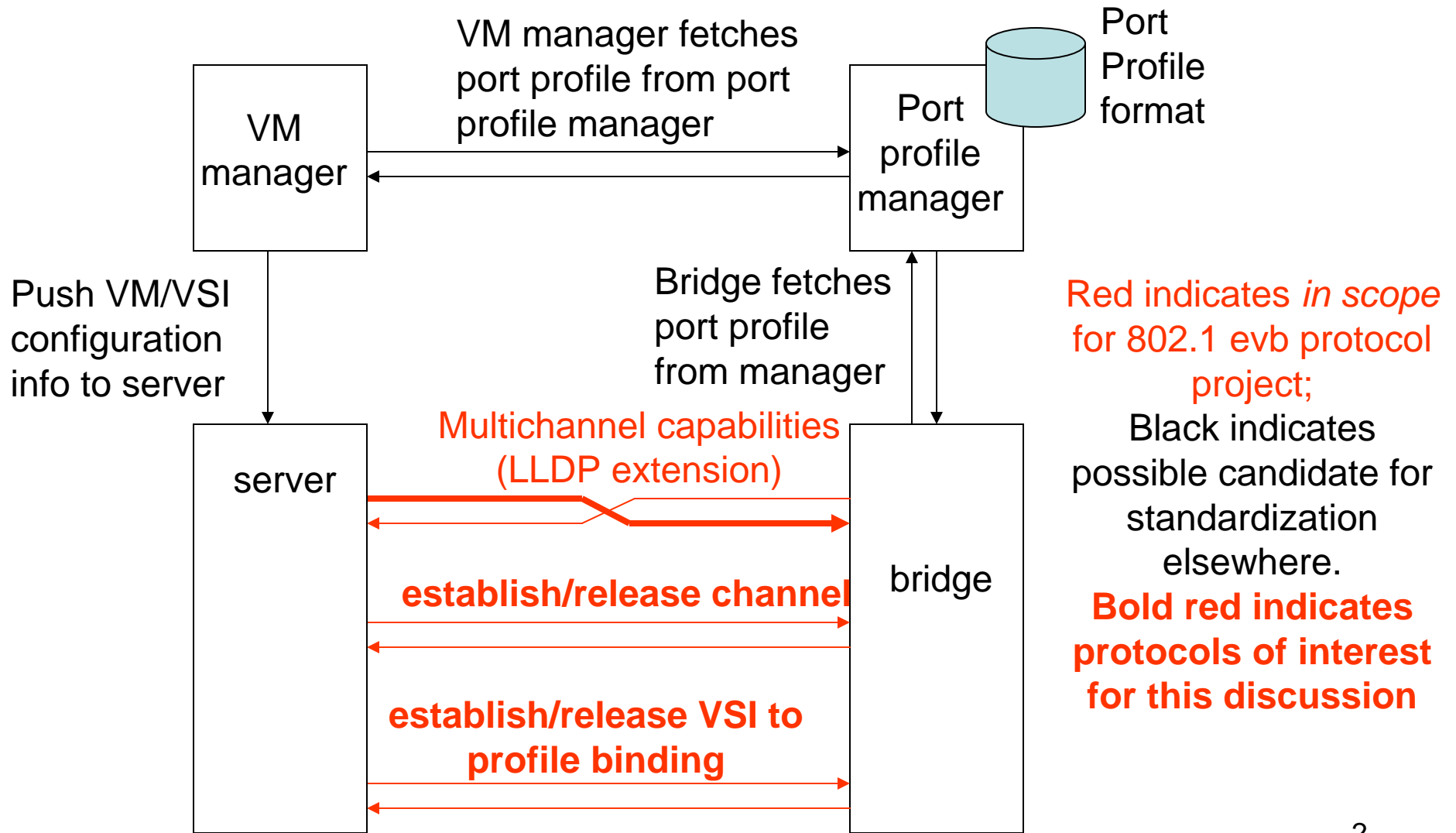


Binding Control Protocol

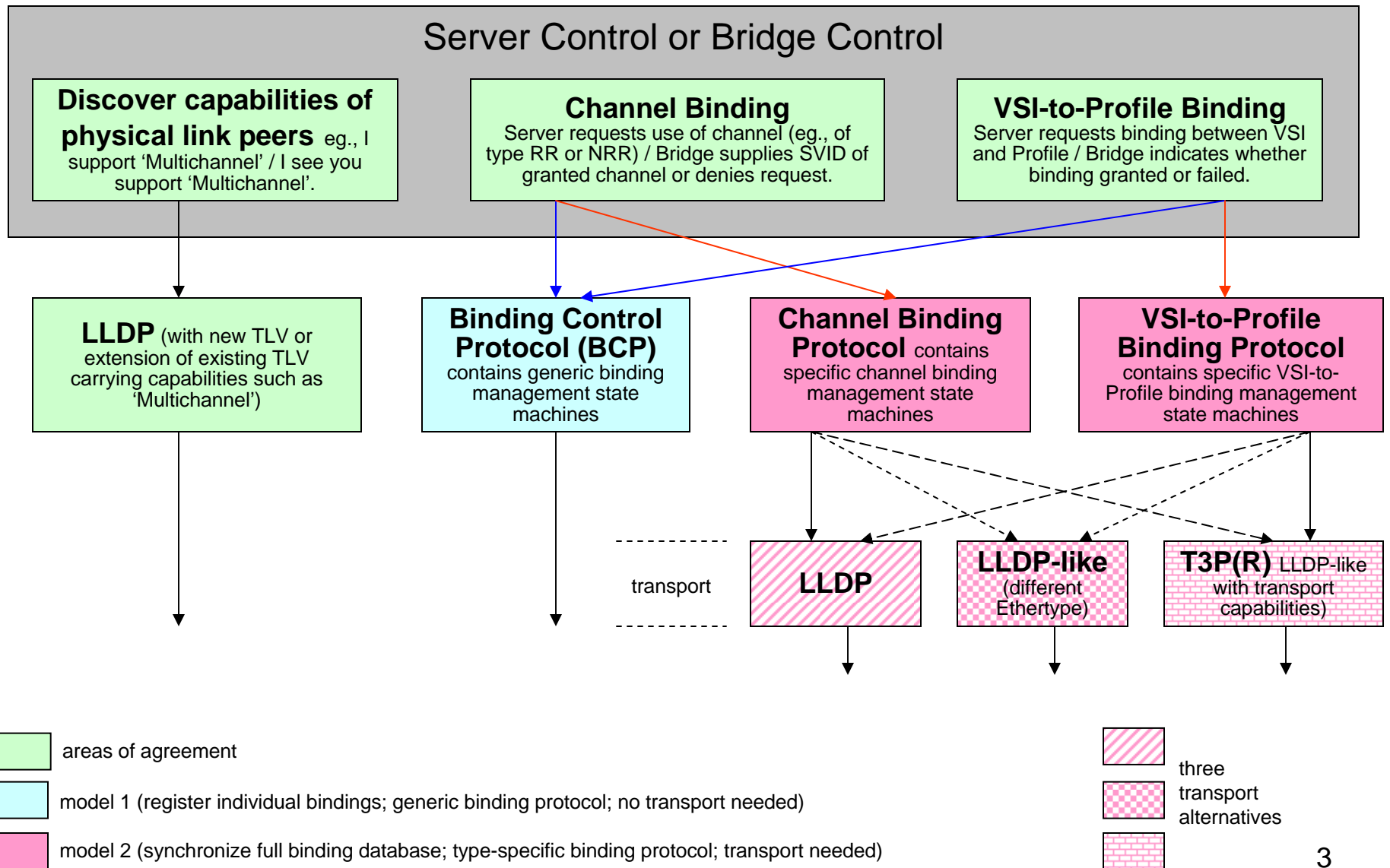
for discussion in Thursday joint DCB-Interworking session at
January 2010 802.1 Interim meeting Austin, TX, USA

Bob Sultan (bsultan@huawei.com)

evb Protocols



evb protocol alternatives

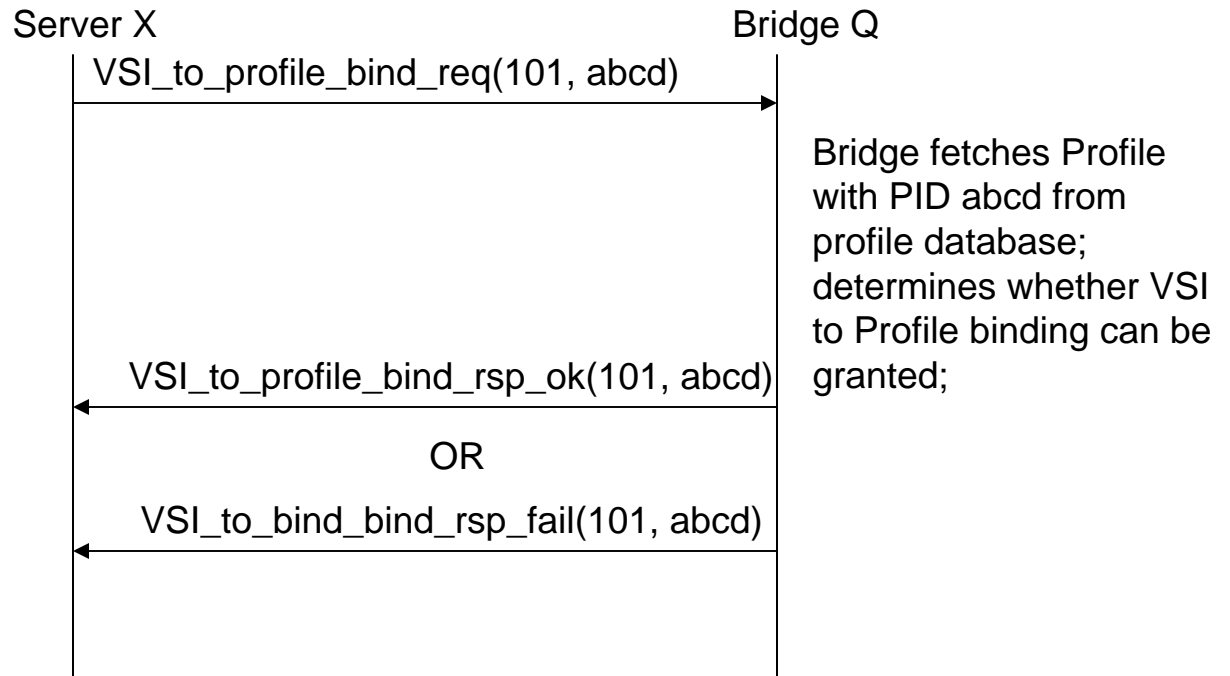


VSI bind example

Server sends request for binding between VSI 101 and Profile ID (PID) abcd.

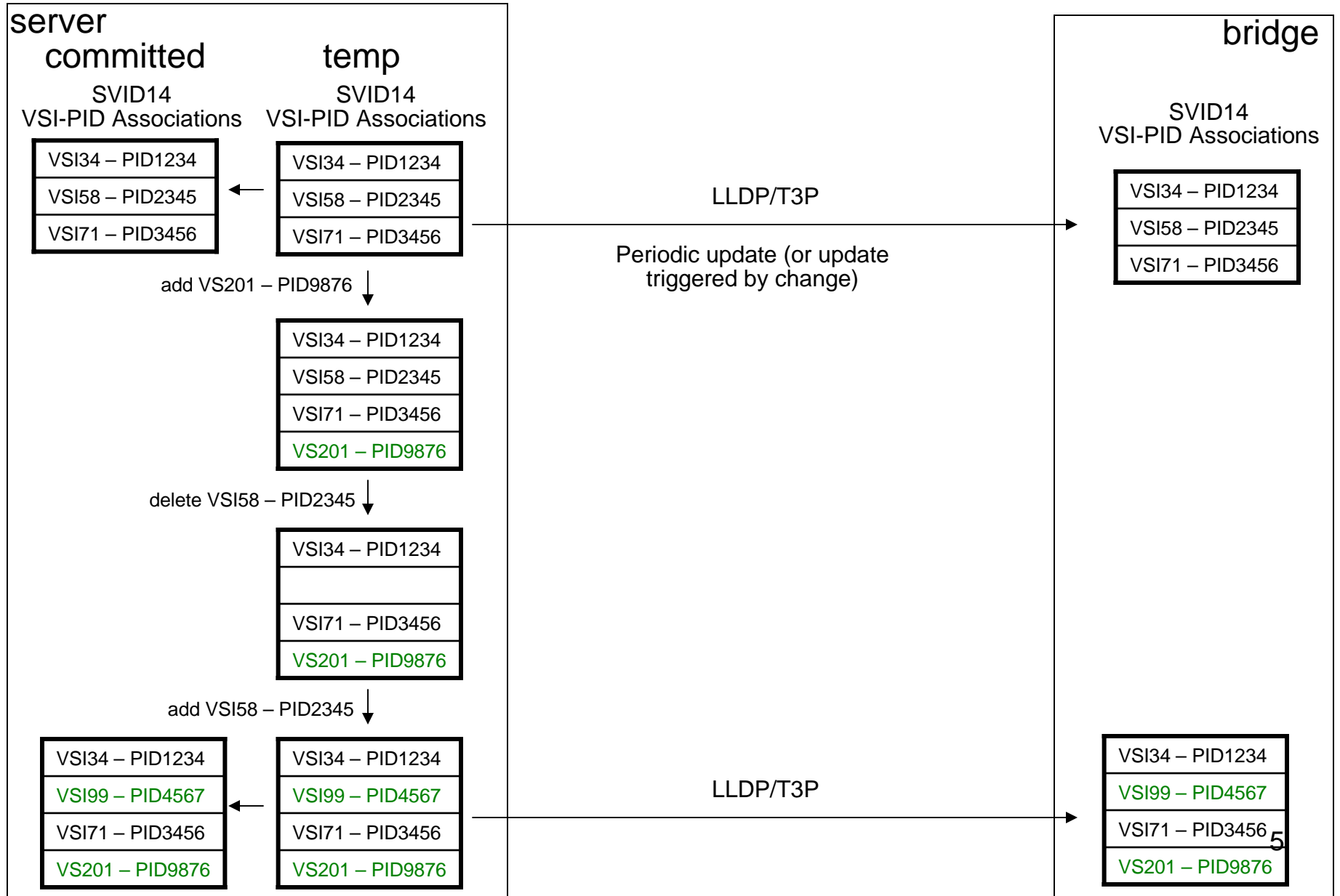
The binding has been established (the hypervisor can start the VM with VSI 101);

The binding has been rejected (the hypervisor can try to start this VM somewhere else or take other action);



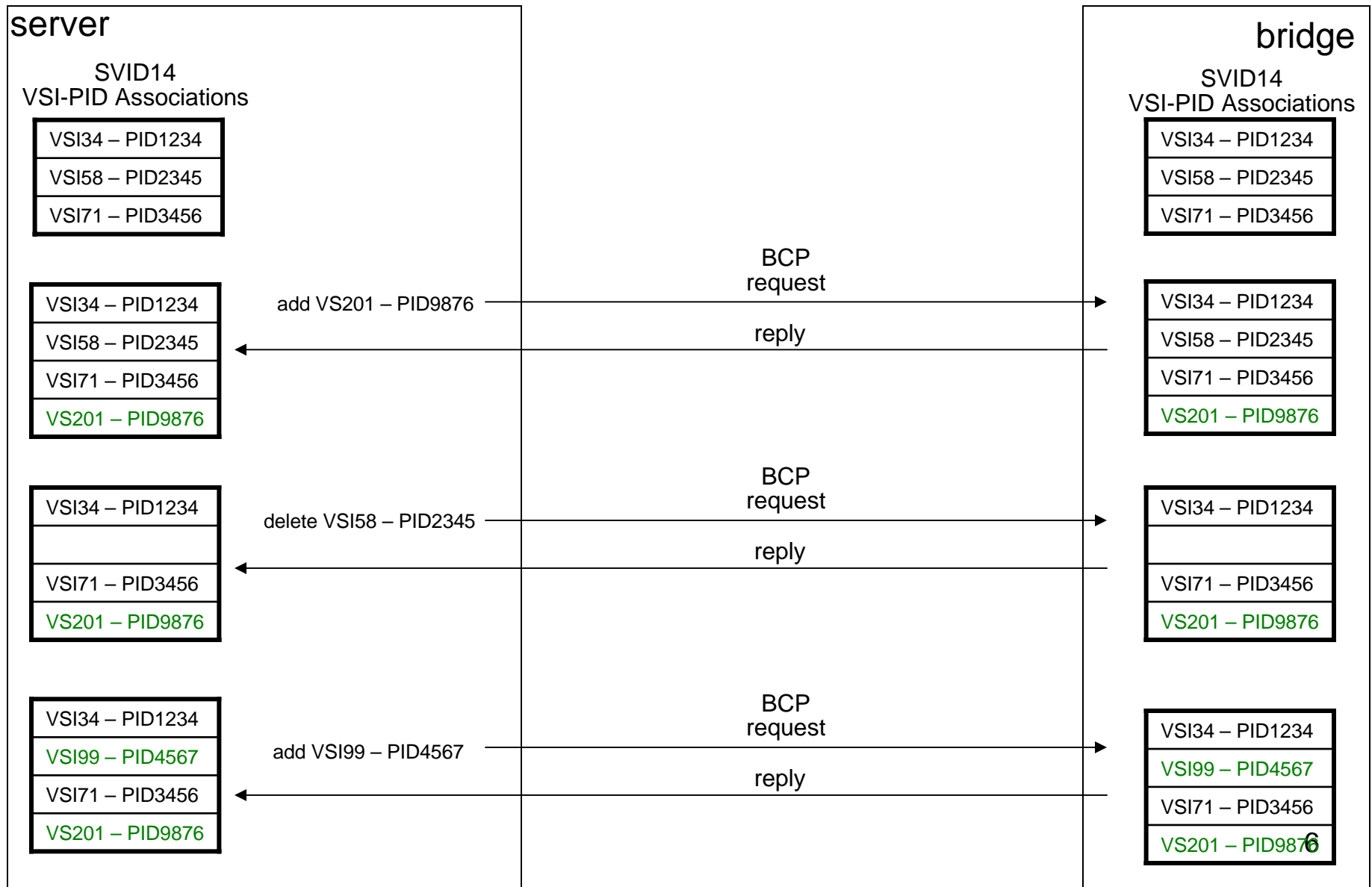
LLDP/T3P Model

Transfer Entire Database when VM Moves



BCP Model

Transfer *one* database entry when VM Moves



Key points

- There are *two* types of protocols proposed for ‘channel establish/release’ and ‘VSI-to-profile binding’:
 - Protocols (LLDP, T3P) that *transfer the entire database* of VSI-to-profile associations when a VM moves;
 - Require the introduction of a new transport protocol;
 - A protocol (BCP) that transfers only the VSI-to-profile association for the VM that has moved;
- Not a *shred* of evidence has been introduced to justify the need to transfer the entire database when a VM moves;
 - The interworking group should be very concerned about the introduction of a new transport protocol;
 - Particularly when no justification has been provided;
 - and a simple request/response control protocol is adequate.