



# Improving IoT Security: the role of the manufacturer

Eliot Lear

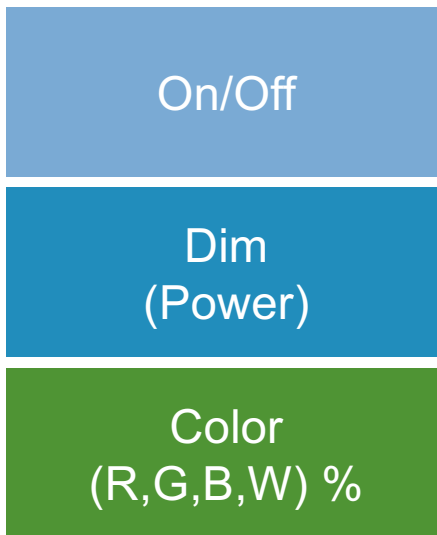
# Introduction

# A View Through a Light Bulb

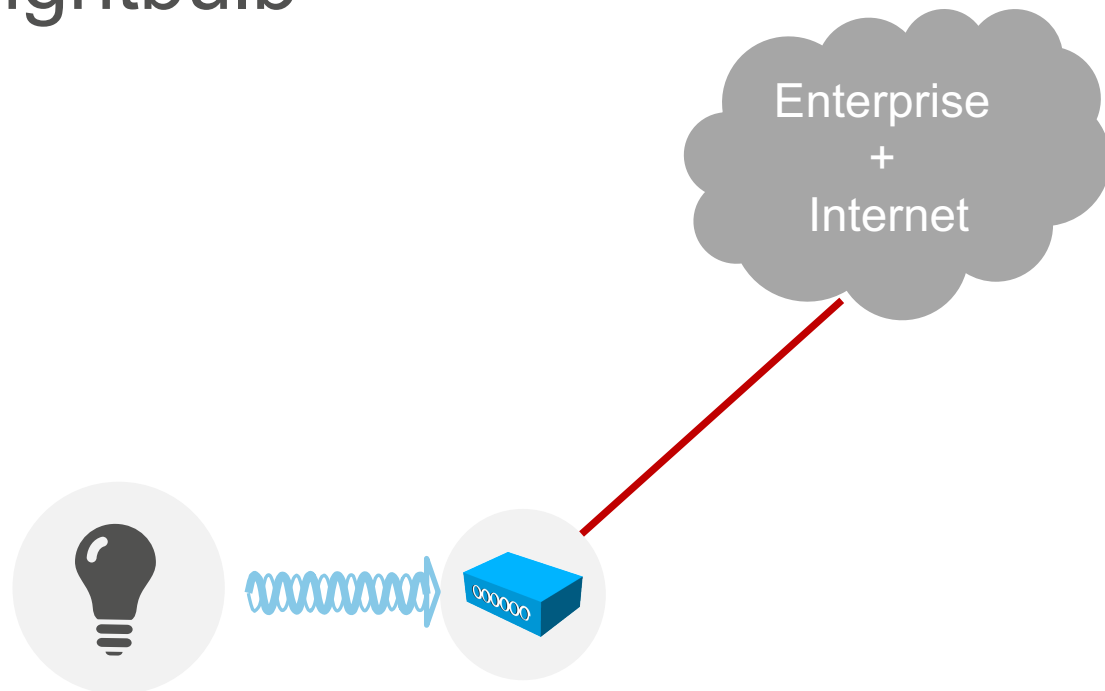
- Connected Spaces is a big deal
- Automated and efficient lighting
- Room assignment and scheduling
- Changing of conditions for different customer profiles



# A non-networked light bulb



# A networked lightbulb



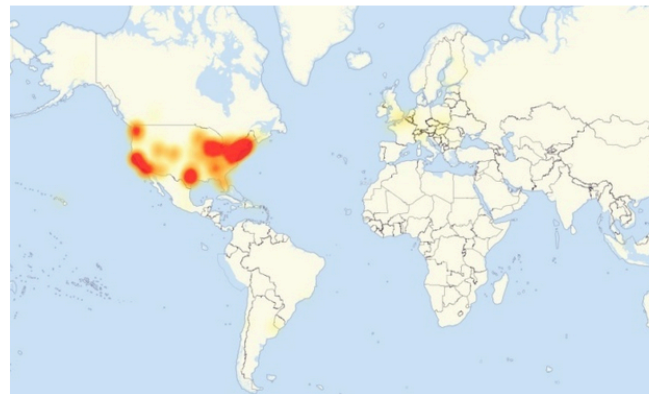
# What do manufacturers wish to avoid

NETWORKWORLD  
FROM IDG

INSIDER Sign In | Register

Home > Security

## Chinese firm admits its hacked products were behind Friday's massive DDOS attack



A map of Friday's massive DDOS attack and the internet outages involved. Credit: Downdetector

Botnets created from the Mirai malware were involved in Friday's cyber attack

By Michael Kan | Follow  
IDG News Service | Oct 23, 2016 12:01 PM PT

### RELATED



IoT botnets used in unprecedented DDoS against Dyn DNS; FBI, DHS investigating



IoT botnets powered by Mirai continue to grow



Record IoT DDoS attacks raise bar for defenders

on IDG Answers

Can company see that I'm using their internet?



---

TECHNOLOGY

# *Why Light Bulbs May Be the Next Hacker Target*

---

By JOHN MARKOFF NOV. 3, 2016



# General Threats To Defend Against

- Attacker causes device to not perform its function or to malfunction
- Attacker uses device to attack other systems



By AMIR MARINE (Wikimedia) - Own work, CC BY-SA 3.0,







# Cost of configuration

Static environments

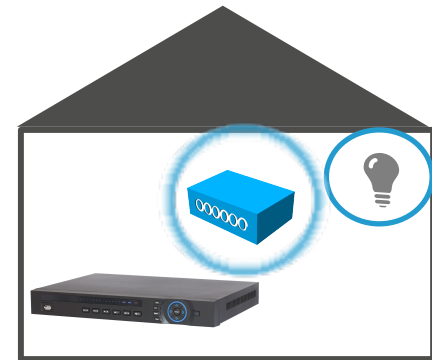


Dynamic systems



# What is needed?

- What is this thing?
  - Who made it?
  - Who owns it?
- **What access does it need?**

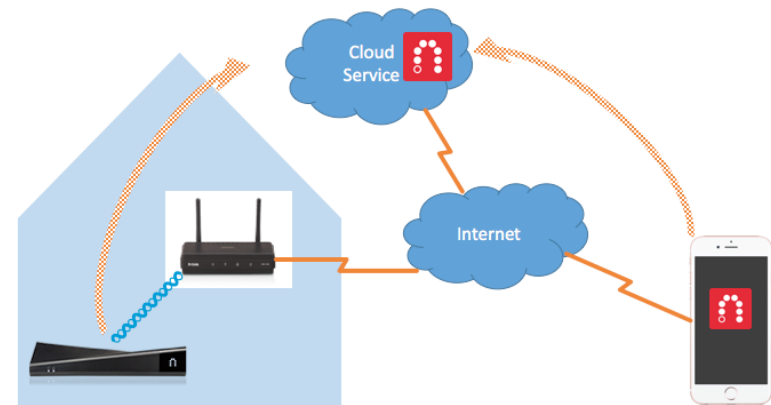


# A common design pattern: the cloud

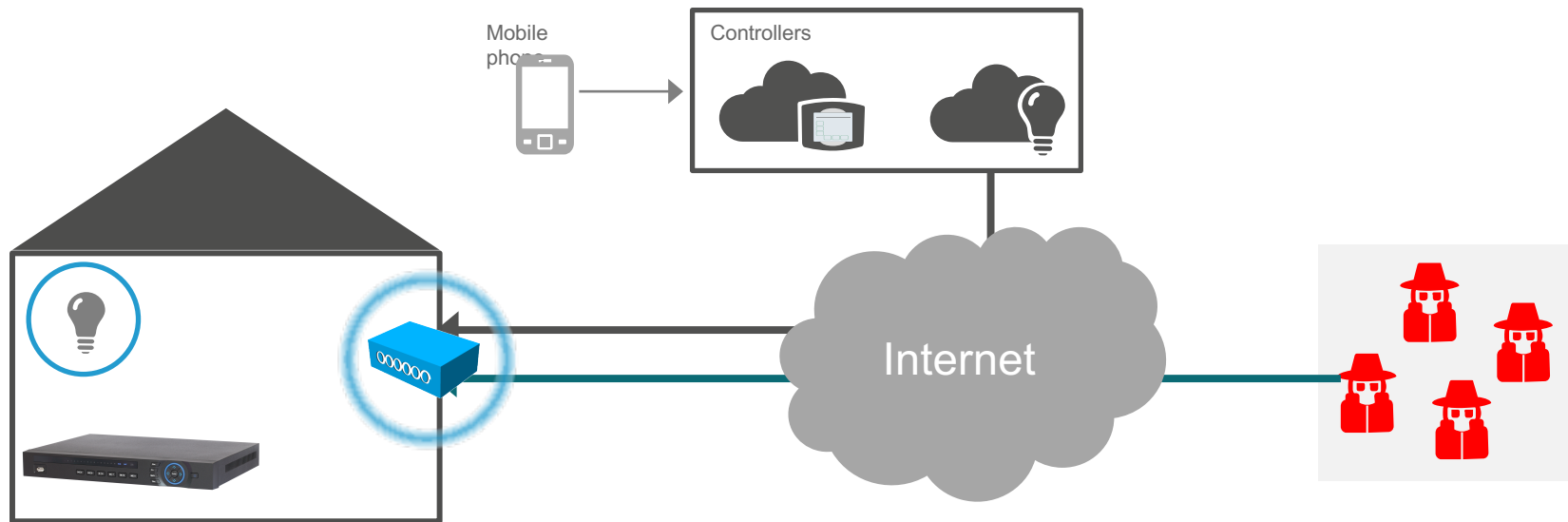
Clouds offer-

- A rendezvous point
- Substantial processing power

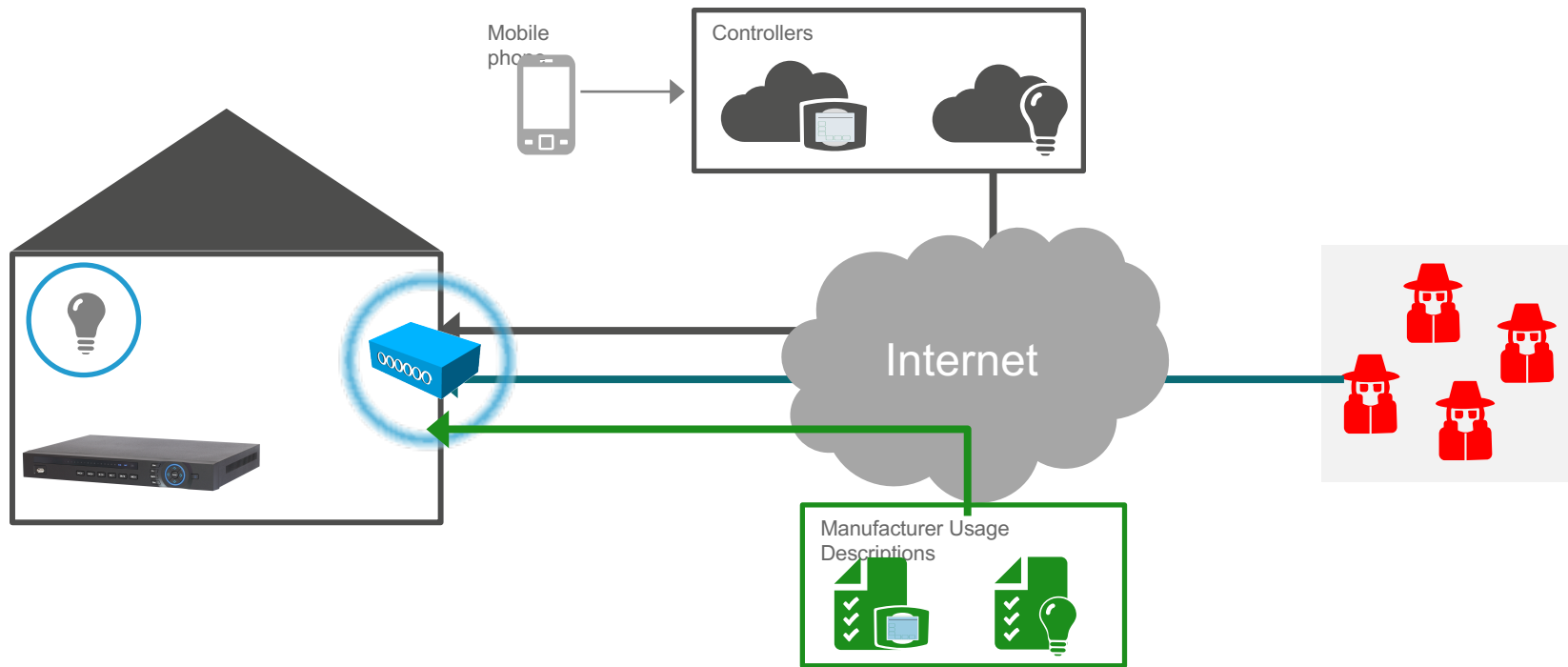
Cloud capabilities will continue to expand.



# Understanding the attack surface



# Introducing the Manufacturer Usage Descriptions (MUD)



# Assumptions and Assertions

## Assumptions

A Thing has a single use or a small number of uses.

Things are tightly constrained. Very **VERY** dumb. Resource constraints are tight.

Even those Things that can protect themselves today may not be able to do so tomorrow

Network administrators are the ultimate arbiters of how their networks will be used



## Assertions

Because a Thing has a single or a small number of intended uses, it all other uses must be unintended

Any intended use can be clearly identified

All other uses can be warned against in a statement

Manufacturers are in a generally good position to make the distinction

Drug Facts	
<b>Active Ingredient (in each tablet)</b>	<b>Purpose</b>
Aspirin 81 mg	Pain reliever
<b>Uses</b>	
for the temporary relief of minor aches and pains or as recommended by your doctor. Because of its delayed release action, this product will not provide fast relief of headaches or other symptoms needing immediate relief.	
<b>Do not use</b> if you have ever had an allergic reaction to any other pain relievers/fever reducers.	
<b>Warnings</b>	
<b>Reyes syndrome:</b> Children and teenagers who have or are recovering from chicken pox or flu-like symptoms should not use this product. When using this product, if changes in behavior with nausea and vomiting occur, consult a doctor because these symptoms could be an early sign of Reyes's syndrome, a rare but serious illness.	
<b>Ask a doctor before use if you have</b> stomach problems (such as heartburn, upset stomach, or stomach pain) that last or come back, bleeding problems, ulcers, asthma.	
<b>Ask a doctor or pharmacist before use if</b> you are taking a prescription drug for diabetes, gout, arthritis.	
<b>Allergy alert:</b> Aspirin may cause a severe allergic reaction which may include: facial swelling, asthma (wheezing), shock, hives.	
<b>Alcohol warning:</b> If you consume 3 or more alcoholic drinks every day, ask your doctor whether you should take aspirin or other pain relievers/fever reducers. Aspirin may cause stomach bleeding.	
<b>Stop use and ask doctor if</b> an allergic reaction occurs. Seek medical help right away. Pain gets worse or lasts more than 10 days, redness or swelling is present, new symptoms occur, the ears or loss of hearing occurs.	
<b>If pregnant or breast-feeding</b> ask a health professional. It is especially important not to use aspirin during the third trimester of pregnancy unless definitely directed to do so, because it may cause problems in the unborn child or complications during delivery.	
<b>Keep out of the reach of children.</b> In case of emergency, call 1-800-POISON or contact a Poison Control Center immediately.	
<b>Directions</b>	
-drink a full glass of water with each dose. -Ac 12 years of age and over: take 4 to 8 tablets every 4 to 6 hours. Do not exceed 48 tablets in 24 hours unless directed by a doctor. -Children under 12 years: consult a doctor.	
<b>Other information</b> store at room temperature	
<b>Inactive ingredients:</b> colloidal silicon dioxide, sodium, FD&C Yellow #10 lake, FD&C Yellow #6 lake, methacrylic acid copolymer, microcrystalline cellulose, talc, titanium dioxide, triethyl citrate	



# Translating intent into config

Any intended use can be clearly  
identified by the manufacturer



```
access-list 10 permit host  
controller.mfg.example.com
```

All other uses can be warned against  
in a statement by the manufacturer

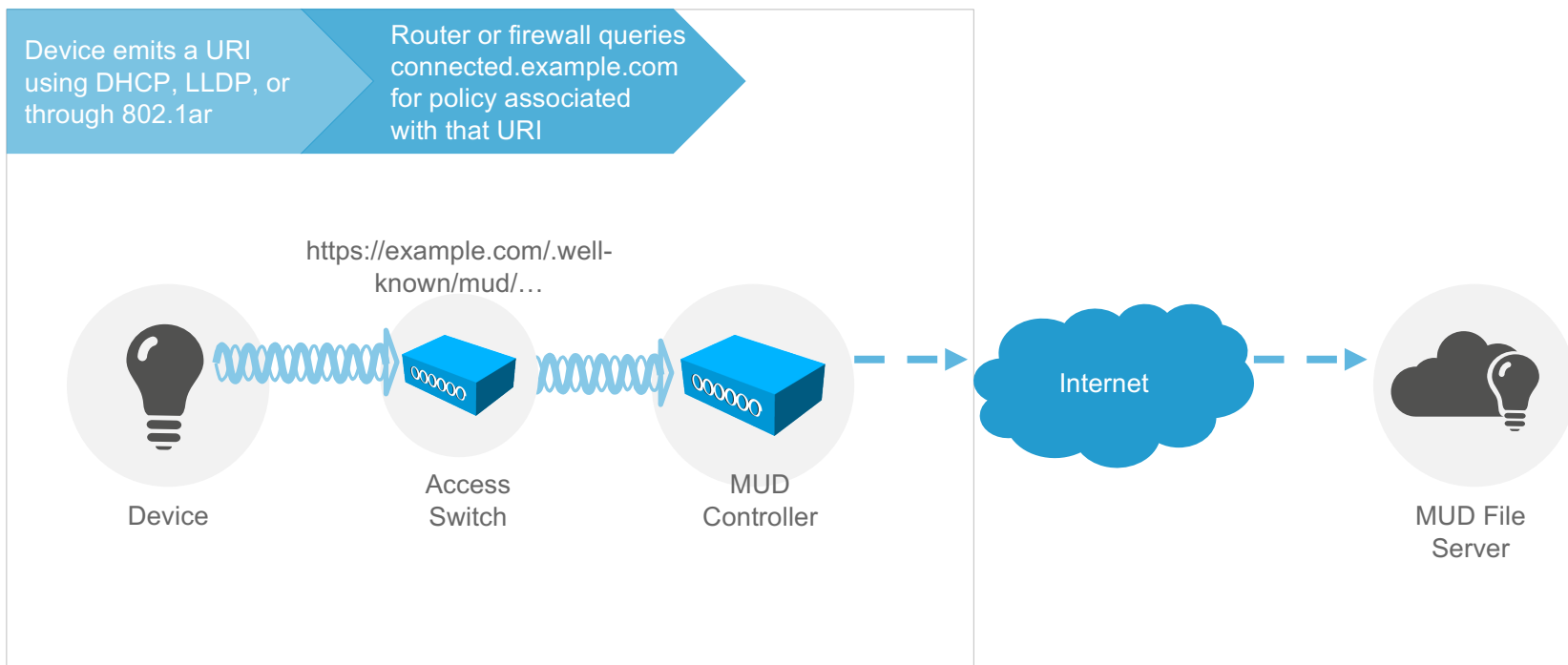


```
access-list 10 deny any any
```





# Expressing Manufacturer Usage Descriptions



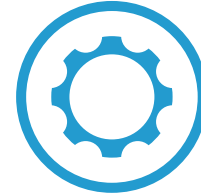
# How to locate the policy? A URL

**https**://mud.mfg.example.com/.well-known/mud/v1/CAS11LCDLversion2.12

“Manufacturer”



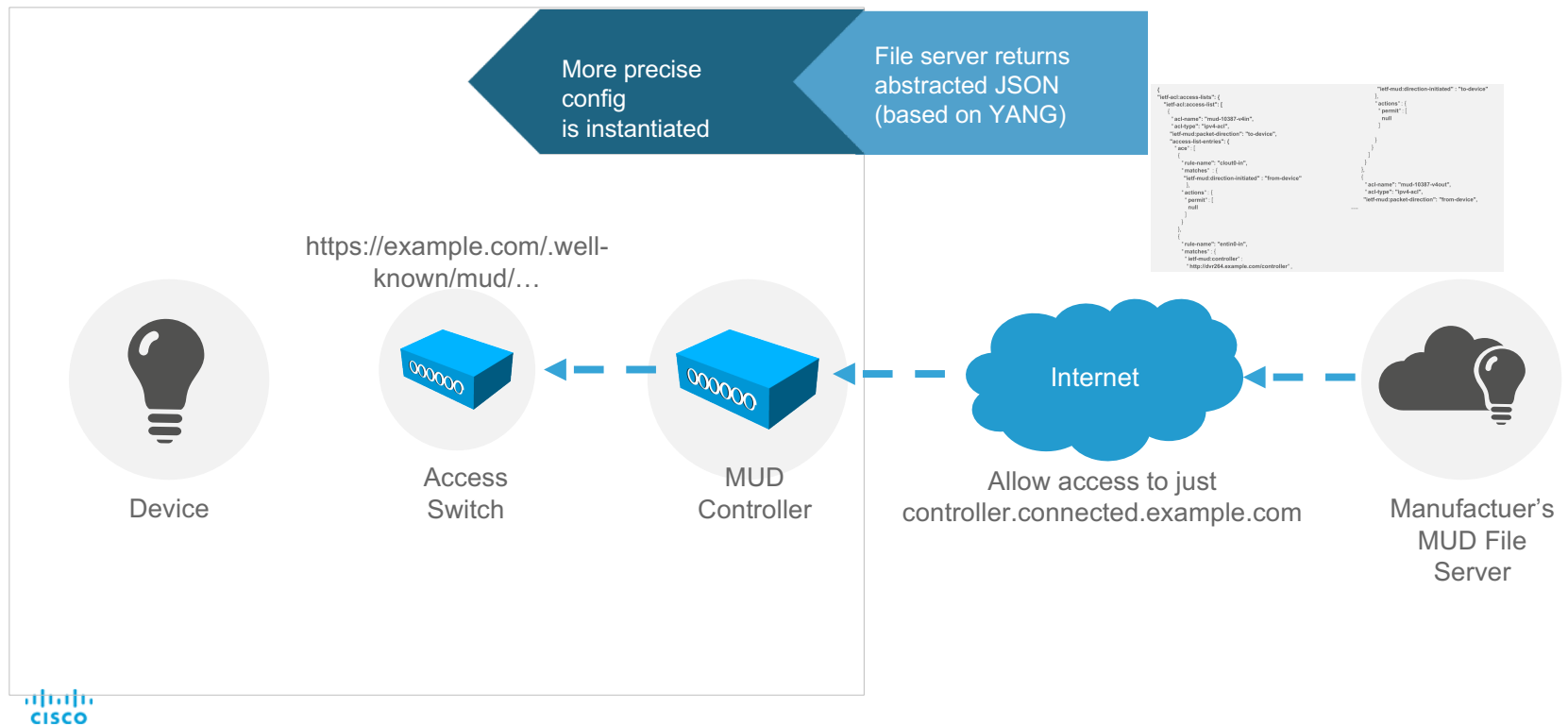
Model



# The MUD File

```
{
  "ietf-acl:access-lists": {
    "ietf-acl:access-list": [
      {
        "acl-name": "mud-10387-v4in",
        "acl-type": "ipv4-acl",
        "ietf-mud:packet-direction": "to-device",
        "access-list-entries": {
          "ace": [
            {
              "rule-name": "clout0-in",
              "matches": {
                "ietf-mud:direction-initiated": "from-device"
              },
              "actions": {
                "permit": [
                  null
                ]
              }
            },
            {
              "rule-name": "entin0-in",
              "matches": {
                "ietf-mud:controller":
                  "http://dvr264.example.com/controller",
                "ietf-mud:direction-initiated": "to-device"
              },
              "actions": {
                "permit": [
                  null
                ]
              }
            }
          ]
        }
      },
      {
        "rule-name": "mud-10387-v4out",
        "acl-type": "ipv4-acl",
        "ietf-mud:packet-direction": "from-device",
        ....
      }
    ]
  }
}
```

# Expressing Manufacturer Usage Descriptions



# Benefits

## Customer



- Reduces threat surface of exploding number of devices
- Almost no additional CAPEX
- Avoids lateral infections in the network
- Eases and scales access management decisions

## Manufacturer



- Reduces manufacturer product risk at almost no cost
- Will increase customer satisfaction and reduce support costs
- Avoids the front page
- Standards-based approach

# What does it mean to be connected?



Open Access	Limited Access
Open Innovation	Only published uses to authorized devices

## In search of that happy middle: MUD Classes

- (same) manufacturer
- (my) controller
- local

## Summary: Manufacturer Usage Descriptions

- A URI
- Use of {dhcp, EAP-TLS, lldp} to get it out
- Retrieval of a MUD file from a server
- Instantiation of class information onto the router



## So... what should manufacturers do?

1. Recognize that they have to do some stuff
2. Make use of good coding practices (like turning off unused services)
3. Establish an incident response capability
4. Establish appropriate software management processes
5. **Identify device and its profile to the network**

**(Nearly) all of this has been done by others!**

## Future work: the heavy lifting

- WPA Personal in the home is **suboptimal**

(shared keys)



## More information

- [mud-interest@cisco.com](mailto:mud-interest@cisco.com)
- [lear@cisco.com](mailto:lear@cisco.com)
- draft-ietf-opsawg-mud-04
- draft-ietf-anima-bootstrap-keyinfra-04

