

Paul Unbehagen
Big Switch Networks

Scott Fincher
Extreme Networks

802.1Qcj D1.1 Status

Commenting Statistics

- 7 Approved
- 3 Disapproved
- 28 Abstained

- 38 total voted

CATEGORY	All Respondents	
	TOTAL	%
Yes	7	70.00%
No	3	30.00%
Voting Yes or No	10	100.00%
Abs. Time	3	7.89%
Abs. Expertise	25	65.79%
Abs. Other	0	0.00%
Respondents	38	
Voting members	35	
Non-voting	3	
No. of commenters	3	7.89%
No. of comments	65	
TR	27	
T	14	
E	17	
ER	7	

Status

- Use of PBB terms – BSI vs. I-SID, and VLAN/VID vs. C-VLAN/S-VLAN constancy being added.
- Last 2 drafts have had no changes to technical content.
- Current comments revolve around updating the state machine and the nomenclature of different elements (VID/ISID, VLAN/BSI).
- D1.1 contains, 1st draft state machine, optimized HMAC and updated AA nomenclature (AAS, AAF, & AAB)
 - D1.2 will update State Machine draft diagrams significantly, see slides 8 & 9

Comment Summary

- State Machine Comments
 - 1,9,10,11,22,23,24,25,42,54,57,58,62 *Total:13*
- BSI vs. I-SID plus VID/VLAN, C-VID/S-VID usage inconsistencies
 - 26*,36,37,38*,43,55,56 *Total:7*
- LLDP mgmt VID use in LLDP vs Q (optional)
 - 44,45 *Total:2*
- Auto Attach 'Function' vs 'Protocol'
 - 26*,27,28,34,35,38*,42,49,52,59 *Total:10*
- MIB comments
 - 50,51 *Total:2*
- Editorial notes
 - 2,3,4,5,6,7,8,12,13,14,15,16,17,18,21,29,20,31,32,33,39,40,41,46,47,48,53,59,60,64 *Total:30*

Auto Attach terms – D1.1

- State Machine diagram in D1.0 was reflective of LLDP Tx and Rx diagrams for consistency.
- Auto Attach Function vs. Auto Attach Protocol
 - Auto Attach resides above LLDP (802.1AB protocol) functionally as a function to automate connecting VIDs to PBBN services.
- PBBN Backbone Service Instance (BSI) vs. I-SID
 - Need consensus on consistent term.
- VID/VLAN and C-VLAN/S-VLAN contexts
 - Auto Attach define support of Bridged LAN and Bridged VLAN.

Auto Attach (other) – D1.1

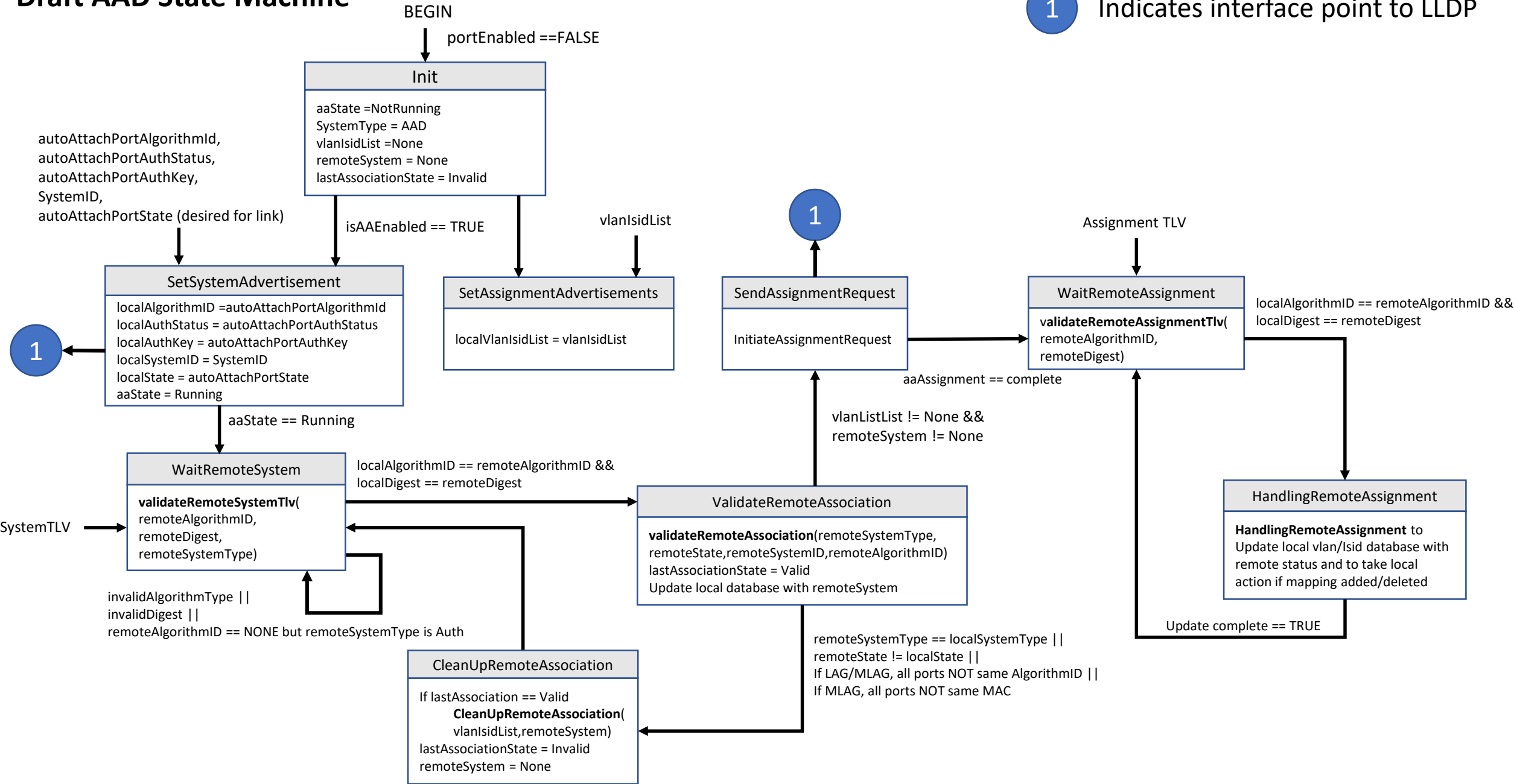
- Management VID (#44 & #45)
 - Reference required for LLDP Vendor Specific TLV support of Mgmt VID
- System ID in AA System TLV and LAG/MLAG
 - Need to accommodate PBB virtual BMAC for Auto Attach BEBs upstream from Auto Attach Device (IE: Link Agg to one or two PBB BEBs).
 - Auto Attach defines AA Device communication to ONE AA BEB

State Machine

- Redesign prepared for next draft.
- AA State Machine should follow LLDP diagrams as implementers will see AA as a side function using LLDP TLVs.

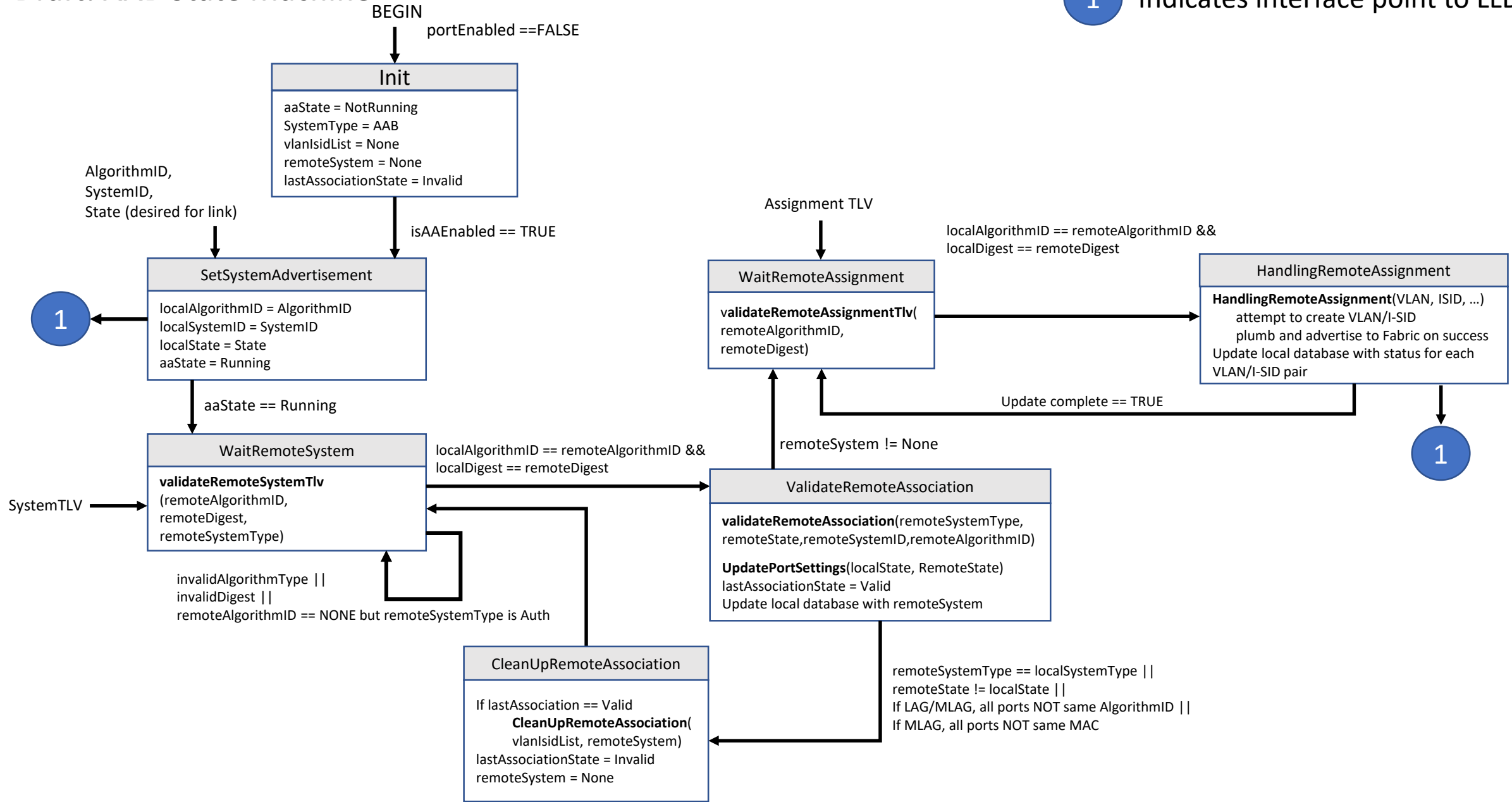
Draft AAD State Machine

1 Indicates interface point to LLDP



Draft: AAB State Machine

1 Indicates interface point to LLDP



Plan

- Comment resolution at this meeting.
 - Acceptance of all Editorial comments
 - Acceptance of service vs tag description terms (VLAN vs VID, BSI vs. I-SID)
 - Acceptance of State Machine diagram models
- Working group recirculation ballot for next draft.

End