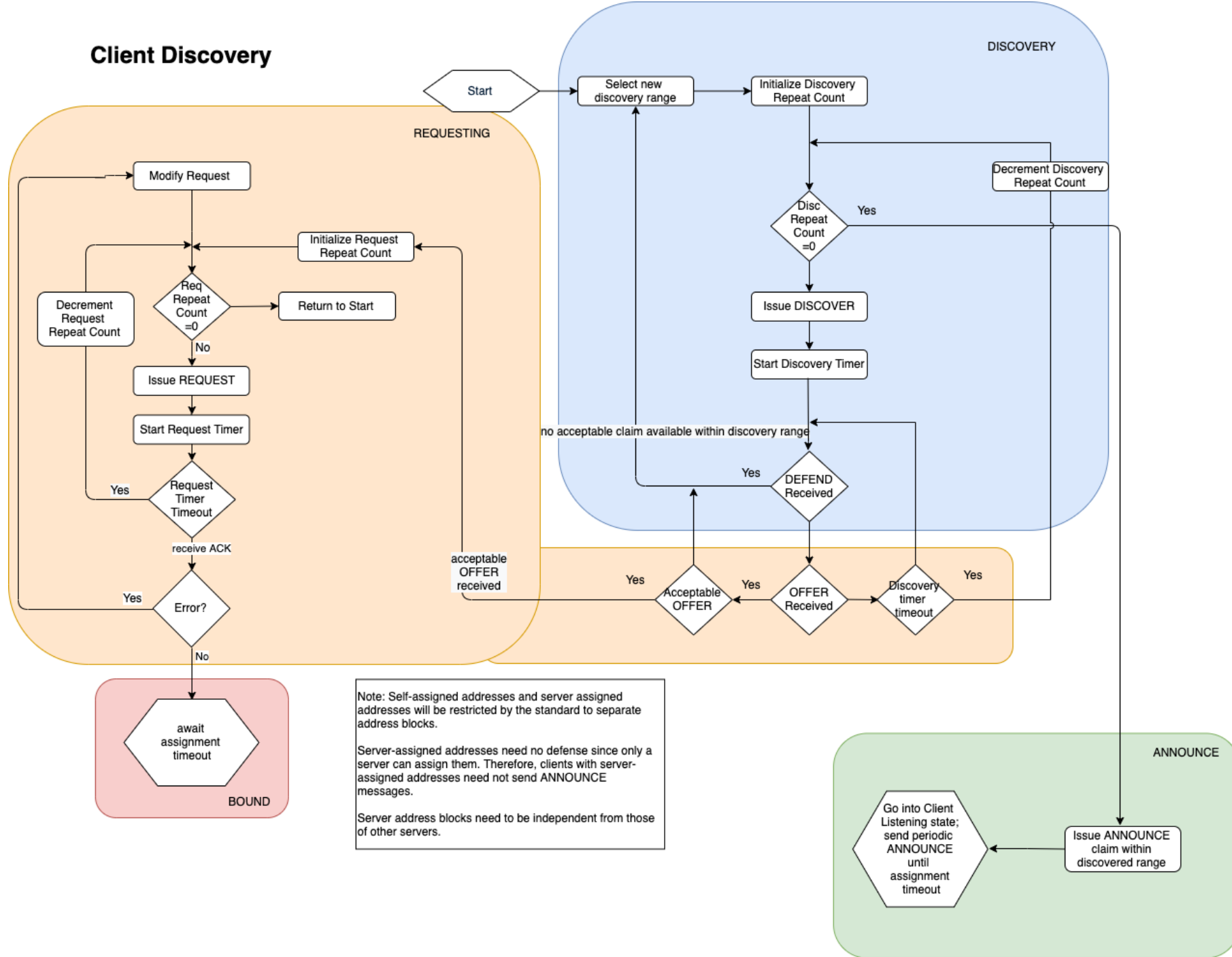


IEEE 802.1CQ State Machine

Antonio de la Oliva (Interdigital)

Roger Marks (EtherAirNet Associates)

Client Discovery



Note: Self-assigned addresses and server assigned addresses will be restricted by the standard to separate address blocks.

Server-assigned addresses need no defense since only a server can assign them. Therefore, clients with server-assigned addresses need not send ANNOUNCE messages.

Server address blocks need to be independent from those of other servers.

State Machine

- Working on the State Machine corresponding to previous flow diagram
 - See contribution [cq-aoliva-statemachine-1119-v1.pdf](#)