

-----  
| IEEE 802.1 REVISION REQUEST 0093 |  
-----

DATE: 3 January, 2013  
NAME: Kodirov Nodir and Sung Hyuk Byun  
COMPANY/AFFILIATION: ETRI  
E-MAIL: nodir@etri.re.kr, shbyun@etri.re.kr

REQUESTED REVISION:  
STANDARD: 802.1Qbg-2012  
CLAUSE NUMBER: multiple clauses stated in the following text  
CLAUSE TITLE: multiple clauses

RATIONALE FOR REVISION:

The R field of EVB TLV is the maxRetries value for ECP state machine (43.3.7.4).

Most system variables for R are named with "maxRetries" suffix, but some variables are named with "maxTries", and the ECP Tx state machine (43.3.4) is designed with "maxTries" in mind.

For example, in the ECP Tx state machine, ECPDU can be sent maximum 3 times when "maxRetries = 3", although ECPDU should be sent up to 4 times (1 + maxRetries). Also, if "maxRetries = 0" (which is valid value for R) and no ack was received, state transition from "transmitECPDU" fails.

So, the ECP Tx state machine should be modified to correctly reflect the meaning of "maxRetries". Additionally, several system variables such as evbSysEcpDfl tMaxTries (Table 12-17 and Table 12-18 of 12.26.1), ecpAdminMaxTries (Table 12-18 of 12.26.1) and ecpOperMaxTries (12.27.1, 41.5.5.9, 41.5.5.13, 43.3.7.4) need to be changed with "MaxRetries" concept.

PROPOSED REVISION TEXT:

1) Change the ECP transmit state machine (Figure 43-3, clause 43.3.4) with the proposed state machine (see the attached file ECP-transmit-state-machine.pdf)

In the proposed state machine, inc(retries) action is moved to newly added "Retry" state.

2) In Table 12-17 of clause 12.26.1, and table 12-18 of clause 12.26.1,

Change the variable "evbSysEcpDfl tMaxTries" to "evbSysEcpDfl tMaxRetries".

3) In Table 12-18 of clause 12.26.1,

Change the variable "ecpAdminMaxTries" to "ecpAdminMaxRetries".

4) In Table 12-26 of clause 12.17.1, clause 41.5.5.9, clause 41.5.5.13, and clause 43.3.7.4,

Change the variable "ecpOperMaxTries" to "ecpOperMaxRetries".

5) In Table 17-26 EVB MIB structure and object cross referece of clause 17.2.20,

Change "ieee8021BridgeEvpEcpOperMaxTries" to "ieee8021BridgeEvpEcpOperMaxRetries".

(Note: Ieee8021BridgeEvpEntry of EVB MIB (17.7.20) is defined with "ieee8021BridgeEvpEcpOperMaxRetries")

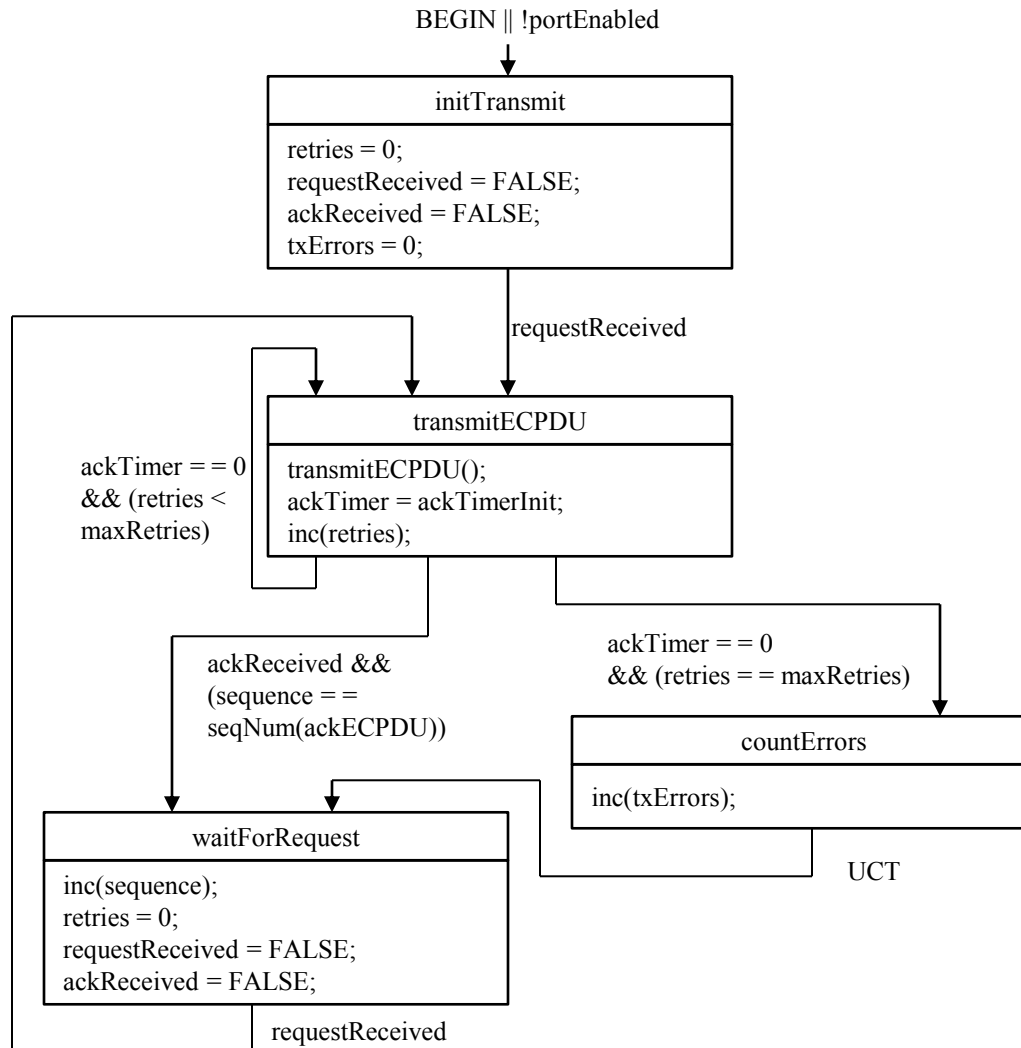
IMPACT ON EXISTING NETWORKS:

An early EVB implementation may have an incompatible MIBs and malfunctioning ECP transmit state machine. This clarification is needed to prevent further incompatible EVB implementations.

Please attach supporting material, if any  
Submit to: - Tony Jeffree, Chair IEEE 802.1  
and copy: - Glenn Parsons, Vice-Chair IEEE 802.1  
E-Mail: stds-802-1-maint-req@ieee.org

----- For official 802.1 use -----  
REV REQ NUMBER: 0093  
DATE RECEIVED: 01/09/2013  
EDITORIAL/TECHNICAL  
ACCEPTED/DENIED  
BALLOT REQ'D YES/NO  
Status: R

# Original ECP transmit state machine



# Proposed ECP transmit state machine

