

Project	<b>IEEE 802.16 Broadband Wireless Access Working Group</b> < <a href="http://ieee802.org/16">http://ieee802.org/16</a> >	
Title	<b>Definition of the process for Adaptive Channel Selection</b>	
Date Submitted	<b>2006-02-28</b>	
Source(s)	Wu Xuyong, Zhao Quanbo, Pan Zhong,  Huawei Huawei Industrial Base, Bantian, Longgang, Shenzhen 518129 P.R.C	Voice: +86-755-28971677 Fax: +86-755-28975523  <a href="mailto:wuxuyong@huawei.com">wuxuyong@huawei.com</a>
Re:	80216h-06_005: Call for Comments and Contributions: IEEE 802.16 License-Exempt Task Group (2006-02-06)	
Abstract	In order to collect the information from all the influenced BS nearby, IBS need to scan all the channel and broadcast the contact information in all the candidate channel. After collect the necessary information, BS need to start negotiate with the neighbors when necessary. Updating the information during operation is still open and not the main purpose of this paper.	
Purpose	Conform the process for ACS for IBS according to all the current material in the WD.	
Notice	This document has been prepared to assist IEEE 802.16. It is offered as a basis for discussion and is not binding on the contributing individual(s) or organization(s). The material in this document is subject to change in form and content after further study. The contributor(s) reserve(s) the right to add, amend or withdraw material contained herein.	
Release	The contributor grants a free, irrevocable license to the IEEE to incorporate material contained in this contribution, and any modifications thereof, in the creation of an IEEE Standards publication; to copyright in the IEEE's name any IEEE Standards publication even though it may include portions of this contribution; and at the IEEE's sole discretion to permit others to reproduce in whole or in part the resulting IEEE Standards publication. The contributor also acknowledges and accepts that this contribution may be made public by IEEE 802.16.	
Patent Policy and Procedures	The contributor is familiar with the IEEE 802.16 Patent Policy and Procedures < <a href="http://ieee802.org/16/ipr/patents/policy.html">http://ieee802.org/16/ipr/patents/policy.html</a> >, including the statement "IEEE standards may include the known use of patent(s), including patent applications, provided the IEEE receives assurance from the patent holder or applicant with respect to patents essential for compliance with both mandatory and optional portions of the standard." Early disclosure to the Working Group of patent information that might be relevant to the standard is essential to reduce the possibility for delays in the development process and increase the likelihood that the draft publication will be approved for publication. Please notify the Chair < <a href="mailto:chair@wirelessman.org">mailto:chair@wirelessman.org</a> > as early as possible, in written or electronic form, if patented technology (or technology under patent application) might be incorporated into a draft standard being developed within the IEEE 802.16 Working Group. The Chair will disclose this notification via the IEEE 802.16 web site < <a href="http://ieee802.org/16/ipr/patents/notices">http://ieee802.org/16/ipr/patents/notices</a> >.	

## Definition of the process for Adaptive Channel Selection Huawei Technologies Co., Ltd.

**Overview:**

the following diagram figure h17 in 15.2.1.3 need to be change.

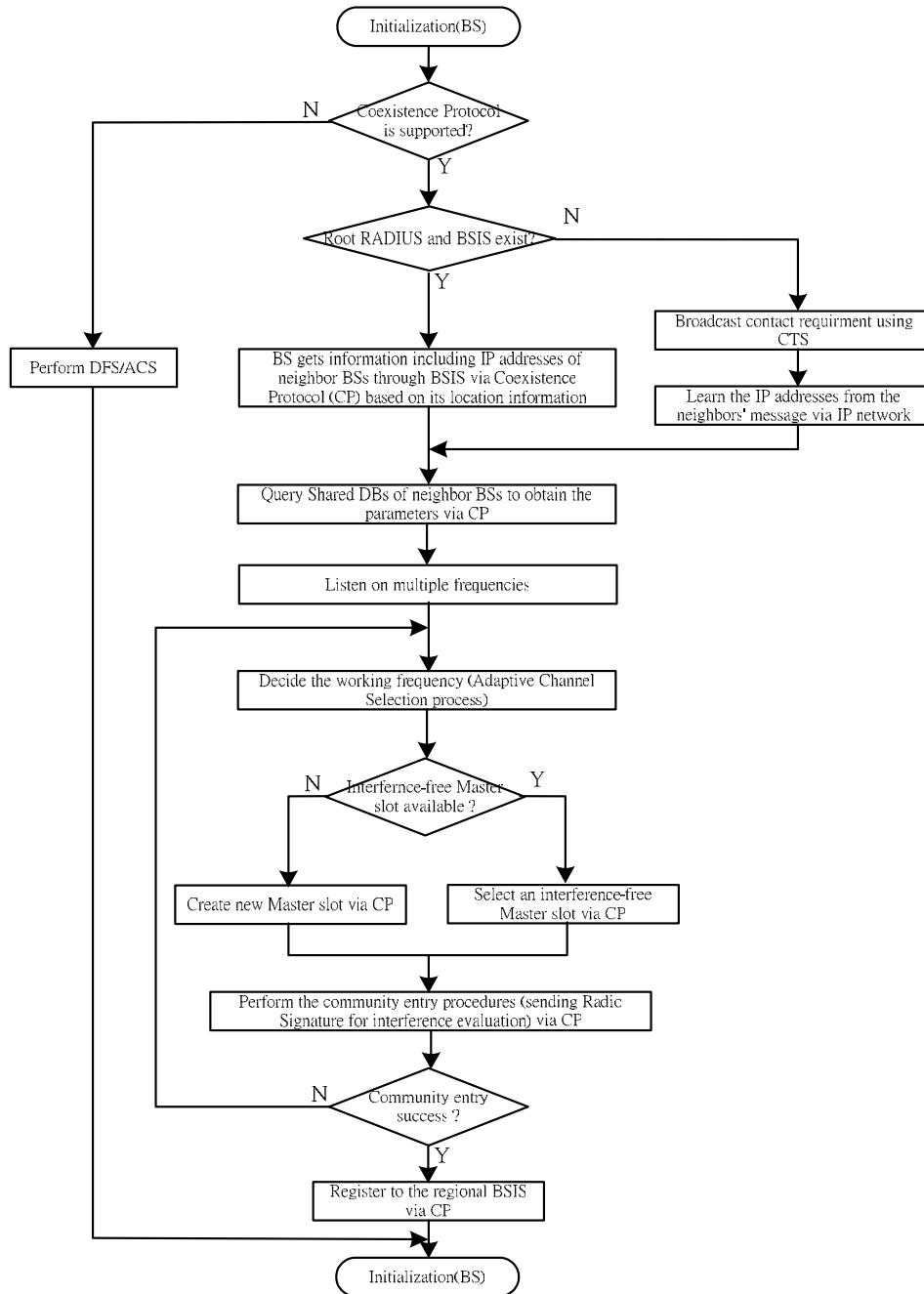


Figure h17—Initialization procedures — BS

To clarify the description of initialization procedure, the resource allocation and CP messaging procedure should be defined separately.

## Abbreviations and acronyms

### Reference:

- [1] *IEEE 802.16-06/004: Working Document for P802.16h (2006-02-06)*
- [2] *IEEE C802.16h-06/017: Entering the community using coexistence proxy (2006-02-28)*
- [3] *IEEE C802.16h-06/018: Optimization of channel distribution (2006-02-28)*

## Proposal

### Proposed text changes

*Insert text in section 15.4.1 as indicate:*

#### 15.4.1 Adaptive Channel Selection – ACS

*First try to find a vacant channel:*

- *Passive scan*
- *Active scan (see 15.2.1.3)*
- *CP messaging using IP network with neighbors (see 15.6.1 & 15.2.1.3)*

*Next try to coordinate for an exclusive channel*

- *Optimization of channel distribution (see 15.7.1 & 15.7.1.4)*

*Success of either step will enable the BS start working with an exclusive working channel*

*Fail will begin a working channel sharing coordinate procedure*

*Change the Figure h17 in 15.2.1.3 as indicate:*

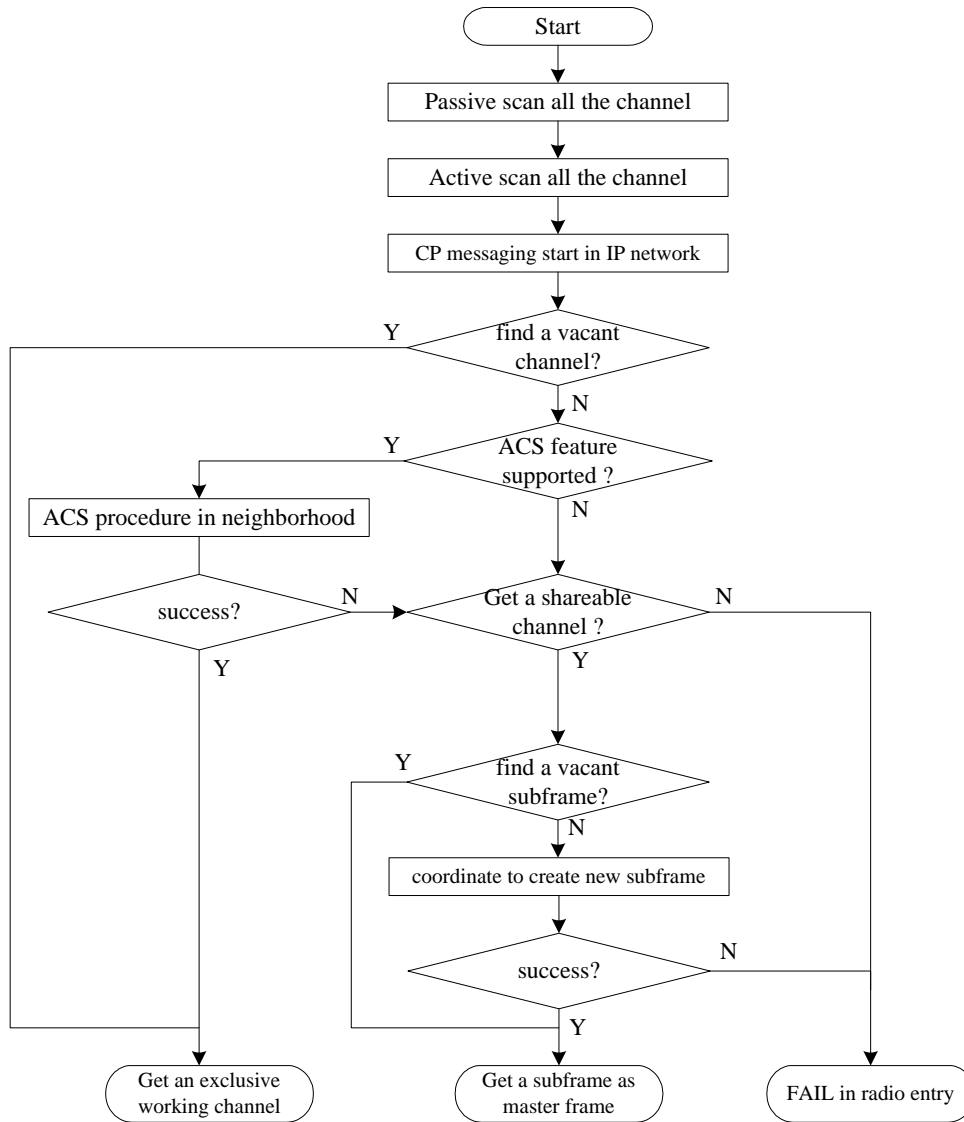


Figure h17—Initialization procedures — BS radio resource allocation

**Discussion:**

***Should we use the ACS similar approach to deal with the optimization of subframe Distribution?***