

Project	<b>IEEE 802.16 Broadband Wireless Access Working Group</b> < <a href="http://ieee802.org/16">http://ieee802.org/16</a> >	
Title	Changes to Working Draft Document for Conformance of Same PHY Profile Processes and the CX_CC concept	
Date Submitted	<b>2006-09-28</b>	
Source(s)	John Sydor Shanzeng Guo Communications Research Centre  Ottawa, Canada K2H 8S2	Voice: 613-998-2388 Fax: 613-990-8369 <a href="mailto:john.sydor@crc.ca">john.sydor@crc.ca</a>
Re:	Revision to IEEE C802.16h-06/092	
Abstract	Changes to conform with Draft Document	
Purpose	revision	
Notice	This document has been prepared to assist IEEE 802.16. It is offered as a basis for discussion and is not binding on the contributing individual(s) or organization(s). The material in this document is subject to change in form and content after further study. The contributor(s) reserve(s) the right to add, amend or withdraw material contained herein.	
Release	The contributor grants a free, irrevocable license to the IEEE to incorporate material contained in this contribution, and any modifications thereof, in the creation of an IEEE Standards publication; to copyright in the IEEE's name any IEEE Standards publication even though it may include portions of this contribution; and at the IEEE's sole discretion to permit others to reproduce in whole or in part the resulting IEEE Standards publication. The contributor also acknowledges and accepts that this contribution may be made public by IEEE 802.16.	
Patent Policy and Procedures	The contributor is familiar with the IEEE 802.16 Patent Policy and Procedures < <a href="http://ieee802.org/16/ipr/patents/policy.html">http://ieee802.org/16/ipr/patents/policy.html</a> >, including the statement "IEEE standards may include the known use of patent(s), including patent applications, provided the IEEE receives assurance from the patent holder or applicant with respect to patents essential for compliance with both mandatory and optional portions of the standard." Early disclosure to the Working Group of patent information that might be relevant to the standard is essential to reduce the possibility for delays in the development process and increase the likelihood that the draft publication will be approved for publication. Please notify the Chair < <a href="mailto:chair@wirelessman.org">mailto:chair@wirelessman.org</a> > as early as possible, in written or electronic form, if patented technology (or technology under patent application) might be incorporated into a draft standard being developed within the IEEE 802.16 Working Group. The Chair will disclose this notification via the IEEE 802.16 web site < <a href="http://ieee802.org/16/ipr/patents/notices">http://ieee802.org/16/ipr/patents/notices</a> >.	

**Changes to Working Draft Document for conformance of Same PHY Profile Processes and the CX\_CC concept**

John Sydor, Shanzeng Guo  
Communications Research Center

Ottawa, Canada

## Introduction

With the development of the Coexistence Control Channel (CX\_CC) concept, there are a number of Same PHY profile processes that need to be changed to conform to the new concept. These are not new conceptual additions to the Draft Standard.

*Delete the current Section 15.3.2.1 and insert the following new section:*

### 15.3.2.1 Coexistence Messaging Interval (CMI) for use with Same Profile Systems and the CX\_CC

The CMI has duration of a frame 1.9 msec and is a repetitive slot found in the Coexistence Control Channel (CX\_CC). A CMI is claimed by a system and consists of 3 uplink and 3 downlink intervals found within a CX\_CC cycle (T\_cogn). Downlinks carry information BSD messages unique to the identity of the base station controlling the network for which the particular CMI is associated. Uplink messages carry SSURF messages unique to the subscriber stations associated with the network and base station associated with the same CMI. During a given CMI all other networks, not associated with the particular CMI, remain silent and receive only.

Every BSD (Section 6.3.2.3.62) sent downlink has a BS\_ID associated with it. The BS\_ID, when received by a foreign SS as part of the BSD, indicates to the foreign SS the source of interference to it. Additionally the BSD contains an UL-MAP which addresses specific SS associated with the BS\_ID to (and the same CMI) to send their SSURF messages (Section 6.3.2.3.63). The SSURF messages when received by a foreign BS, indicates to the foreign BS the source of interference to it. Only one BSD message is inserted randomly into the 1.9 second duration of the downlink CMI whereas multiple SSURFs are inserted inside the uplink CMI.

The rationale for the random placement of the BSD is to handle the event where two or more BSDs occurs in the same CMI. This is possible since there can be adjacent co-channel coexistence communities that interfere.

Normally the CMI claiming process and the Clear Channel assessment process that every BS undertakes before entry into the Coexistence Community limits a single system to a single CMI. However, this process cannot be guaranteed because of the nature of sporadic interference and the chance of hidden systems becoming visible.

In such situations the detection of interference is imperative. Detection of the multiple BSD messages is facilitated by randomizing their transmissions within the CMI. Randomization limits the chance that BSDs in the same CMI collide. The SS will be able to detect foreign BSDs within durations that they are expecting only their home BSD. Such a detection of interference in the invocation of the Coexistence Protocols, likely between the home and foreign BSD.

The probability of BSD collisions within the same CMI can be calculated, and is a process dependent on the width of the BSD (which is dependent on the datagram content, modulation, and channel bandwidth) and the width of the CMI interval within which the BSD is randomly placed; for Wireless MAN-CX systems the CMI interval is Tcc\_s (1.9 msec)

For the worst BSD collision case, there are n base stations in the common coverage area, the successful (non-overlapping) BSD transmission probability is

$$p = 1 - \frac{1}{m} \frac{1}{m} \quad C_n = 1 - \frac{1}{m} \frac{1}{m} \frac{n}{(n-2)! 2!}$$

Where  $\square$ . Assume the CMI downlink duration time length is t which is the uplink

portion of a physical frame (physical frame duration is varying from 2, 2.5, 4, 5, 8, 10,

12.5, to 20ms), the BSD downlink PDU time duration is  $\square$ , which is typically  $\ll 1$  msec

Delete the current Section 15.3.2.2 and insert the following new section:

15.3.2.2 Candidate Channel Determination (Using GPS/UTC Synchronized CMI and Common Profile)

Candidate Channel Determination (CCD) is the process used by WirelessMAN-CX systems (conforming to a synchronized CMI and common profile) where the base station monitors a band to which it has access and selects, within that band, a channel having minimal use and occupancy by neighboring wireless systems. This process is used, for example, by an IBS prior to undertaking entry into a Coexistence Community. Since a base station can only receive uplink traffic, this process relies on the monitoring uplink transmission intervals and the measurement of interference signal power [I] and noise power [N]. Each candidate channel will be ranked in terms of its (I/N) ratio. Those channels with the lowest ratio or ideally a ratio of 1 will be selected for use by the base station and be candidates for entry by an IBS, since such channels will have the lowest amount of discernable activity on them, hence likely have lower interference.

[I] and [N] will be determined using the RSSI measurement capability of the base station receiver as detailed in Section 8.4.11.2. After synchronization to the GPS and initialization of the base station operating parameters, the base station will select a channel and undertake noise floor measurements on CX\_CC\_No{1-7}, which are unoccupied CX\_CC slots (Section 10.5.2.3) used by WirelessMAN-CX networks, but may be used by non-WirelessMAN-CX networks (15.3.1.1.3.1)...or indeed any system synchronized to a GPS.

CX\_CC\_No{1-7}, in situations when it is unoccupied by any other wireless system, will be de-facto free from all WirelessMAN-CX transmissions and will provide an interval allowing the measurement of the receiver thermal noise floor [N]. The thermal noise floor is the noise power spectral density of the received channel (No) multiplied by the channel bandwidth. Measurements will be undertaken long enough to determine whether [N] has Gaussian characteristics. Measurements not deemed as Gaussian and/or RSSI measurements that are 3 db (TBD) higher than a predetermined [N] value (which can be provided a-priori as a Receiver Noise Figure estimate within RSSI measurement algorithm in the base station receiver) will be an indication that channel may be occupied by non-WirelessMAN-CX users. In this instance the value of the mean RSSI will be taken as the [I] created by the occupying WirelessMAN-CX network and the given channel will be discarded from further consideration as it is considered occupied. Otherwise, the measurement will provide a value for [N].

[I] measurements will be undertaken by calculating the mean signal strength and variance due to uplink SSURF messages summed over intervals CX\_CMI\_U{1-6}. The number of CMI cycles to be measured will be a variable (TBD) set for the base station by the operator. Measurement of the RSSI will be undertaken in accordance with Section 8.4.11.2, with care being taken to ensure that valid signals are being measured, even at close proximity to the base station. The mean RSSI and variance calculated for the summed CMI intervals of the channel will be construed as interference values [I] and [Var I] for the channel. In essence, what this measurement represents is the total power that the base station receives on that channel, due to the total of all Subscriber Stations operating on that channel. Because of the granular nature of the interference environment above and beyond what is simply given by [I] and [Var I]. The incorporation of interference detection approaches will not be presently considered in the context of the current discussion however.

The channels are then ranked, with the channels having the lowest [I/N] and smallest [Var I] measurements likely selected for IBS entry into a Coexistence Community. The process of operation for monitoring process described in Section XXX can be considered as an alternative method of ascertaining spectrum occupancy. Figure h32 shows the CCD process.

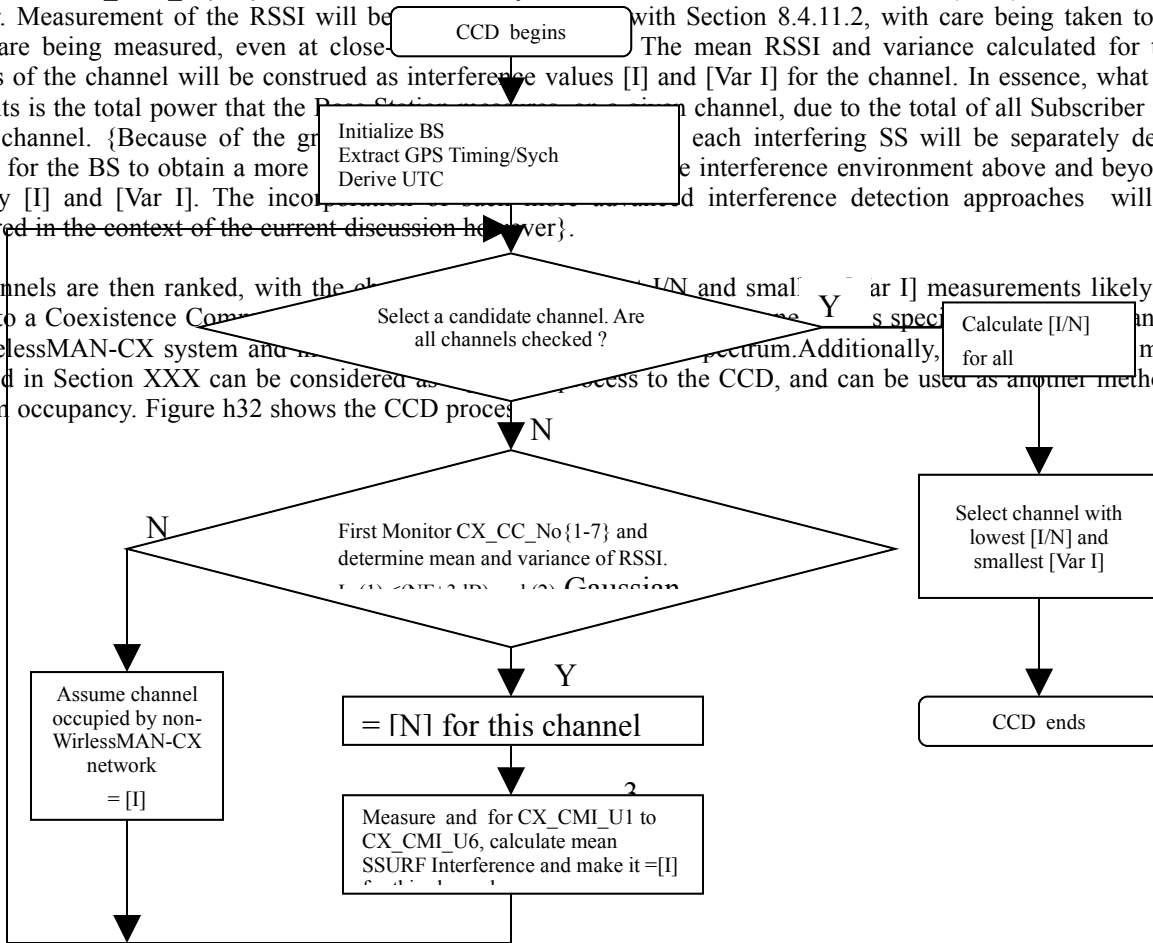


Figure h32 CCD Process

*Delete the current Section 15.3.2.3 and insert the following new section:*

**15.3.2.3 Entry of a new BS into a Interference Neighborhood and the Creation of a Coexistence Community Using CX\_CC**

**Synchronized Systems having the Same PHY profile**

In applications where the CX\_CMI intervals are synchronized to the CX\_CC and are used with systems having a common (same) PHY profile, entry of a new Base Station (IBS) will be undertaken in 4 steps, with the IBS:

- (a) Monitoring the CX\_CMI uplink Intervals,
- (b) Selecting an Empty CX\_CMI downlink interval,
- (c) Claiming an empty CX\_CMI downlink interval,
- (d) Becoming a member of a Coexistence Community using the claimed CX\_CMI.

Prior to entry into a Community of Operating Base Stations (OBS) it is assumed that the IBS will have undertaken the Candidate Channel Determination (Section 15.3.2.2) process and has selected a candidate channel and has no operational SS yet deployed. It is assumed that the IBS is deployed within an Interference Neighborhood, ie: active interference from existing operating systems is present. The IBS entry process is shown in Figure h33. Figure h34 shows aspects of the entry procedure with signaling.

#### (a) Monitoring the CX\_CMI

Having tuned to the candidate channel, the IBS monitors and determines the level of activity on each CX\_CMI uplink interval by demodulating the uplink SSURF (Sec 6.3.2.3.63) messages and storing their parameters in its Base Station Information Table( See Table h4). All demodulated SSURF messages will be from SSs that will interfere with the BS on the uplink and eventually coexistence will have to be negotiated with each of the OBS controlling these SSs. Each CMI interval from CX\_CMI\_U1 to CX\_CMI\_U3 is monitored (in the future this will include U4-U6). Each interval is monitored over a duration of 10 T\_cogn cycles or 2 minutes. If CX\_CC\_No[1-7] have detectable power on them, the channel will be construed as occupied by a non-Wireless MAN-CX systems (See 15.7). The channel will then be abandoned. In this manner the IBS is able to differentiate interferers as either being capable or not of coexistence. The signaling seen by an IBS is shown in Figure 2.

#### (b) Selection of an Empty CX\_CMI

The monitored CX\_CMI uplink intervals in which no (demodulated) SSURF messages are received become candidate CMI intervals. Empty intervals indicate that it is still possible for the IBS to create a new Coexistence Community including the OBS (only a maximum of 3 (future 6) co-channel networks can be accommodated by a single channel. Full loading is indicated by having all 3 (6) CX\_CMI intervals occupied).

During each candidate CX\_CMI a RSSI (see 8.4.11.2) will be undertaken during the uplink duration. RSSI is undertaken to determine the presence or absence of low level (un-demodulated) uplink SSURF messages. Each candidate interval is monitored in this manner over a duration of 10 T\_cogn cycles or 2 minutes. An interval will be considered as useable and chosen if the mean RSSI power measurement in it is no greater than  $\{[N] + 3 \text{ dB}\}$  (TBD); where [N] is the thermal noise floor of the IBS receiver and the noise power is integrated over the full 10 T\_cogn cycles.

The absence of uplink SSURFs means that the CX\_CMI is free of uplink (and possibly downlink occupancy), hence it can be considered as being ready for claiming.

#### (c) Claiming Procedure.

The purpose of the claiming process is to make adjacent OBS networks (which are likely members of different Coexistence Communities) aware of the presence of the IBS. Claiming is undertaken by having the IBS broadcast its BSD during an empty CX\_CMI downlink. Since the OBS are silent and are monitoring the downlink on each CX\_CMI other than their own, the broadcast message will be detectable during what was previously an empty interval (see discussion on undetected broadcasts below).

To begin the claiming procedure the IBS broadcasts at maximum EIRP its BSD (see 6.3.2.3.62) message. This message, when received by foreign SS belonging to adjacent networks that form the Interference Neighborhood, will result in those SS informing their home base stations of the presence of a new base station (the IBS) using the MAC message BS\_CCID\_RSP (see Section 6.3.2.3XX). All OBS having SS that detect the BSD during the claimed CX\_CMI downlink interval will then via an IP link respond back to the IBS informing it that it has been detected and is a de facto interferer on the downlink. The IBS will include in its BS

Information table the IP addresses of all of the OBS that have in essence redirected their BS\_CCID\_RSP messages to it. The IBS continues its BSD broadcast routine until no new BS\_CCID\_RSP messages are detected (the threshold for this is TBD). With the receipt of the totality of redirected BS\_CCID\_RSP messages the IBS will have then have determined the extent of its Interference Neighborhood which is now determined by the set of foreign SS which have received the IBS's BSD messages transmitted during the claimed CX\_CMI. Having this information the IBS will now know with which OBS it must negotiate coexistence, if indeed it is warranted. If it is not warranted (for instance, because the interference created is too difficult to resolve by the Coexistence Protocol), the IBS abandons the CX\_CMI and chooses an alternative channel that is identified as part of the CCD process

(a) Capacity Negotiation and membership in the Coexistence Community

The OBS networks which the IBS creates or sustains interference to/from become listed in the BS Information Table (See H4) of the IBS. This table contains the BS\_IDs and IP proxy addresses derived either from uplink SSURF messages that the IBS demodulated during its monitoring phase (above (a)) or from the REP\_RSP messages that it received via the IP backhaul from the OBS as part of the claiming procedure ((c) above).

Communication and negotiation with each OBS listed in the BS Information Table is undertaken via the {TBD} Coexistence Protocol (CP). Coexistence entails allocation of uplink and downlink transmission intervals in a manner that eliminates co-channel interference amongs **IBS entry Initialization** experience it and sustain degraded communications. This is done by parsing uplink and downlink intervals and establishing common, master, and slave subframes (see Sec 15.4.2.1.2). Each OBS that the IBS has listed in its BS Information Table as an interfering network must partake in such resolution of interference by scheduling. By undertaking GPS Timing Synchronization and Operational integrity check, the IBS forms a Coexistence Community for itself, and cons

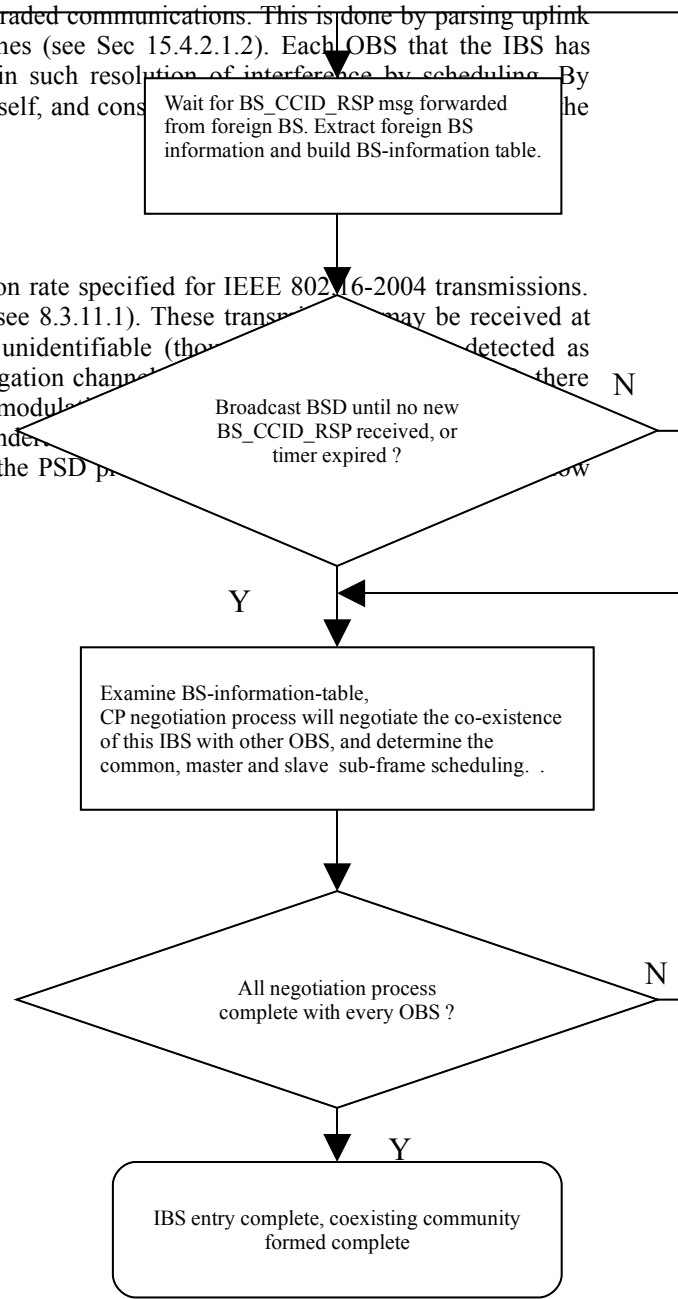
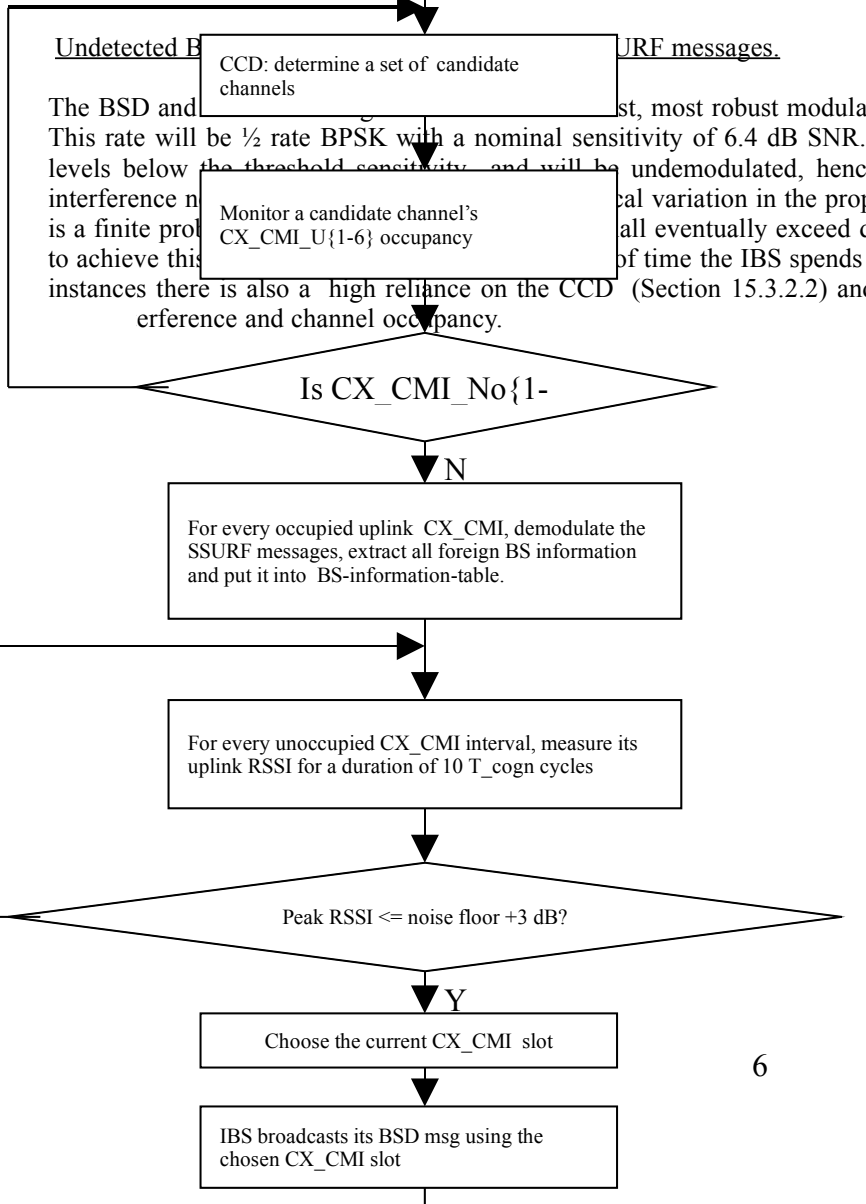


Figure h33. IBS community entry process for Same PHY Systems using CX\_CC CMI signaling .