

Project	<b>IEEE 802.16 Broadband Wireless Access Working Group</b> < <a href="http://ieee802.org/16">http://ieee802.org/16</a> >	
Title	<b>Fixes for Lost of MOB_HO-IND (reject) Messages</b>	
Date Submitted	<b>2008-03-10</b>	
Source(s)	Chi-Chen Lee, I-Kang Fu MediaTek Inc. No. 1, Dusing Rd. 1 Science-Based Industrial Park, Hsinchu, Taiwan 300	<a href="mailto:chichen.lee@mediatek.com">chichen.lee@mediatek.com</a> <a href="mailto:IK.Fu@mediatek.com">IK.Fu@mediatek.com</a>
Re:	IEEE 802.16 Letter Ballot Recirculation #26b, on P802.16Rev2/D3, as announced in IEEE 802.16-08/006.	
Abstract	In IEEE 802.16 Rev2/D3, there is no definition on MS's/BS's behavior when the message MOB_HO-IND message with the HO Reject commend is lost. This contribution explains the potential problems and proposes a resolution to resolve this confusion.	
Purpose	Accept the proposed text modification to IEEE 802.16 Rev2	
Notice	<i>This document does not represent the agreed views of the IEEE 802.16 Working Group or any of its subgroups. It represents only the views of the participants listed in the "Source(s)" field above. It is offered as a basis for discussion. It is not binding on the contributor(s), who reserve(s) the right to add, amend or withdraw material contained herein.</i>	
Release	The contributor grants a free, irrevocable license to the IEEE to incorporate material contained in this contribution, and any modifications thereof, in the creation of an IEEE Standards publication; to copyright in the IEEE's name any IEEE Standards publication even though it may include portions of this contribution; and at the IEEE's sole discretion to permit others to reproduce in whole or in part the resulting IEEE Standards publication. The contributor also acknowledges and accepts that this contribution may be made public by IEEE 802.16.	
Patent Policy	The contributor is familiar with the IEEE-SA Patent Policy and Procedures: < <a href="http://standards.ieee.org/guides/bylaws/sect6-7.html#6">http://standards.ieee.org/guides/bylaws/sect6-7.html#6</a> > and < <a href="http://standards.ieee.org/guides/opman/sect6.html#6.3">http://standards.ieee.org/guides/opman/sect6.html#6.3</a> >. Further information is located at < <a href="http://standards.ieee.org/board/pat/pat-material.html">http://standards.ieee.org/board/pat/pat-material.html</a> > and < <a href="http://standards.ieee.org/board/pat">http://standards.ieee.org/board/pat</a> >.	

# Fixes for Lost of MOB\_HO-IND (reject) Messages

Chi-Chen Lee, I-Kang Fu  
MediaTek Inc.

## 1 Problem Statement

Current standard is not clear about what should MS behave after expiration of T42 when rejecting HO. For example, Figure 149 indicates that the HO exchange ends without any further action at MS after expiration of T42. However, the MS should decide to send the MOB\_MSHO-REQ message to start another HO negotiation or send MOB\_HO-IND (release) message to perform HO in case of the harsh link quality. The problematic scenarios are described in Figure 1.

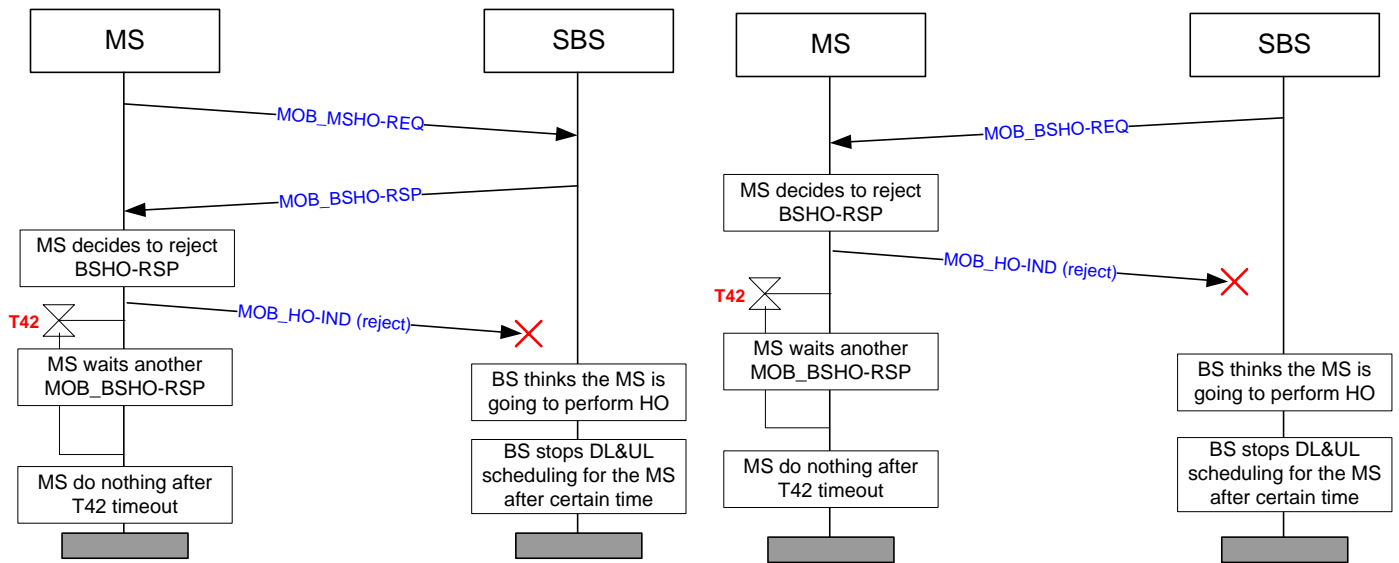


Figure 1 – Lost of MOB\_HO-IND (reject) message

## 2 Suggested Remedy

The suggested remedy is to clarify the MS behavior after expiration of T42.

## 3 Suggested Changes in Rev2/D3

-----Start of the Text-----

[InRev2/D3, line 45 on page 433, section 6.3.22.2.2, modify the text as follows]

If the MS signals rejection of serving BS instruction to HO through HO\_IND\_type field in the MOB\_HO-IND set value of 0b10 (HO reject option), the BS may reconfigure the neighbor BS list and retransmit MOB\_BSHO-RSP message including a new neighbor BS list. MS shall start T42 after sending MOB\_HO-IND message with HO\_IND type = 0b10. When T42 is expired and MS does not receive another MOB\_BSHO-REQ or

2008-03-10

IEEE C802.16maint-08/107

MOB\_BSHO-RSP message from BS, MS may either transmit MOB\_MSHO-REQ message to renegotiate target BS or transmit MOB\_HO-IND message to perform HO.

-----End of the Text-----