

Project	IEEE 802.16 Broadband Wireless Access Working Group < http://ieee802.org/16 >	
Title	Service Primitives for Location Update	
Date Submitted	2005-07-20	
Source(s)	Yun Won Chung, PhD Jee Hyeon Na, Sang Ho Lee, PhD ETRI, 161, Gajeong-dong, Yuseong-gu, Daejeon, 305-700, Korea	yun.chung@etri.re.kr jhna@etri.re.kr leesh@etri.re.kr Voice: +82-42-860-5244 Fax: +82-42-861-1966
Re:	Call for Comment on P802.16g Baseline Document	
Abstract	This contribution proposes service primitives for location update.	
Purpose	The document should be considered during the resolution of comments on the baseline document.	
Notice	This document has been prepared to assist IEEE 802.16. It is offered as a basis for discussion and is not binding on the contributing individual(s) or organization(s). The material in this document is subject to change in form and content after further study. The contributor(s) reserve(s) the right to add, amend or withdraw material contained herein.	
Release	The contributor grants a free, irrevocable license to the IEEE to incorporate material contained in this contribution, and any modifications thereof, in the creation of an IEEE Standards publication; to copyright in the IEEE's name any IEEE Standards publication even though it may include portions of this contribution; and at the IEEE's sole discretion to permit others to reproduce in whole or in part the resulting IEEE Standards publication. The contributor also acknowledges and accepts that this contribution may be made public by IEEE 802.16.	
Patent Policy and Procedures	The contributor is familiar with the IEEE 802.16 Patent Policy and Procedures < http://ieee802.org/16/ipr/patents/policy.html >, including the statement "IEEE standards may include the known use of patent(s), including patent applications, provided the IEEE receives assurance from the patent holder or applicant with respect to patents essential for compliance with both mandatory and optional portions of the standard." Early disclosure to the Working Group of patent information that might be relevant to the standard is essential to reduce the possibility for delays in the development process and increase the likelihood that the draft publication will be approved for publication. Please notify the Chair < mailto:chair@wirelessman.org > as early as possible, in written or electronic form, if patented technology (or technology under patent application) might be incorporated into a draft standard being developed within the IEEE 802.16 Working Group. The Chair will disclose this notification via the IEEE 802.16 web site < http://ieee802.org/16/ipr/patents/notices >.	

Service Primitives for Location Update

Yun Won Chung, Jee Hyeon Na, and Sang Ho Lee

ETRI, Korea

Problem Statement

In this contribution, we propose service primitives for Location Update which are exchanged through Control Service Access Point (C-SAP) of Management Plane specified in IEEE 802.16g baseline document. Location Update of an MS is performed by Mobility Management service of an NCMS. An MS in idle mode performs Location Update in order to inform an NCMS of its current location information, i.e., paging group, and this information is used to page cells within paging group of the called MS when there is pending DL traffic toward the MS.

Location Update is performed if any of Location Update conditions is met and there are currently four Location Update conditions defined: Zone Update, Timer Update, Power Down Update, and MAC Hash Skip Threshold Update. In Zone Update, the MS shall perform Location Update process when the MS detects a change in paging group by comparing the paging group identifier, PG_ID, stored in the MS with that of transmitted by the preferred BS in the DCD message or MOB_PAG-ADV broadcasting message. In Timer Update, MS shall periodically perform Location Update process prior to the expiration of the idle mode timer. In Power Down Update, the MS shall attempt to complete a Location Update once as part of its orderly power down procedure. In MAC Hash Skip Threshold update, the MS shall perform Location Update process when the MS MAC hash skip counter exceeds MAC hash skip threshold.

All the above Location Updates are realized by Ranging request/response (RNG-REQ/RSP) message between an MS and a BS, and Location Update request and Location Update response service primitives are defined between a BS and an NCMS to perform Location Update, as shown in Fig. 1.

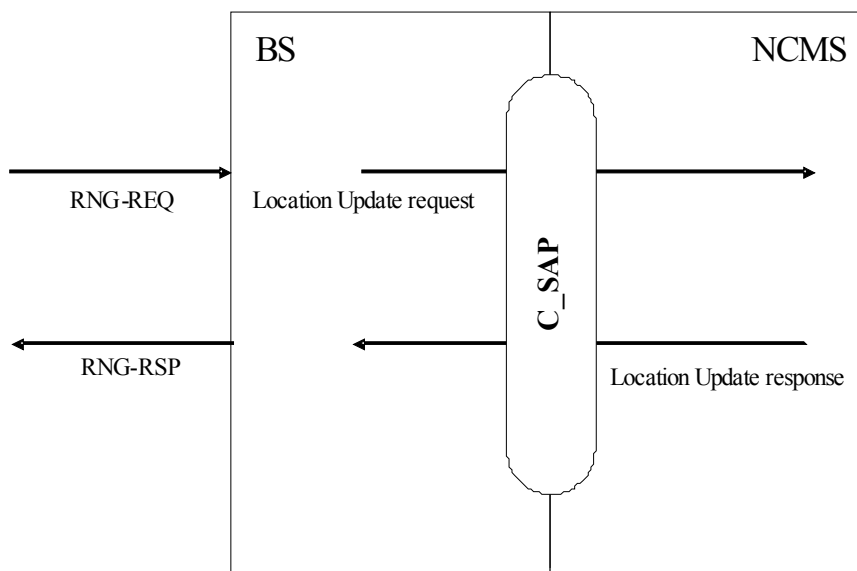


Fig. 1 - Location Update Primitives

Summary of the Proposed Remedy

In this contribution, we define two primitives for supporting Location Update between a BS and an NCMS, which are described briefly in the following table.

Primitive	Direction	Primitive Contents
Location Update request	BS -> NCMS	MS MAC Address, BS ID, Paging Controller ID, Paging Group ID, MAC Hash Skip Threshold, Power Down Indicator
Location Update response	NCMS -> BS	MS MAC Address, Location Update Result, Paging Information, Paging Controller ID, MAC Hash Skip Threshold, Power Down Response

Proposed Text Changes

[Modify section 14.5.9.3 as follow]

14.5.9.3 Location Management

14.5.9.3.1 Location Update Procedure

Location management of an MS is performed by mobility management service of an NCMS. An MS in idle mode performs Location Update in order to inform an NCMS of its current location information, i.e., paging group, and this information is used to page cells within paging group of the called MS when there is pending DL traffic toward the MS.

Location Update is performed if any of Location Update conditions is met and there are currently four Location Update conditions defined: Zone Update, Timer Update, Power Down Update, and MAC Hash Skip Threshold Update. In Zone Update, the MS shall perform Location Update process when the MS detects a change in paging group by comparing the paging group identifier, PG_ID, stored in the MS with that of transmitted by the preferred BS in the DCD message or MOB_PAG-ADV broadcasting message. In Timer Update, MS shall periodically perform Location Update process prior to the expiration of the idle mode timer. In Power Down Update, the MS shall attempt to complete a Location Update once as part of its orderly power down procedure. In MAC Hash Skip Threshold update, the MS shall perform Location Update process when the MS MAC hash skip counter exceeds MAC hash skip threshold.

All the above Location Updates are realized by Ranging request/response (RNG-REQ/RSP) message between an MS and a BS, and Location Update request and Location Update response service primitives are defined between a BS and an NCMS to perform Location Update.

Figure 2 shows service primitives for Location Update between a BS and an NCMS.

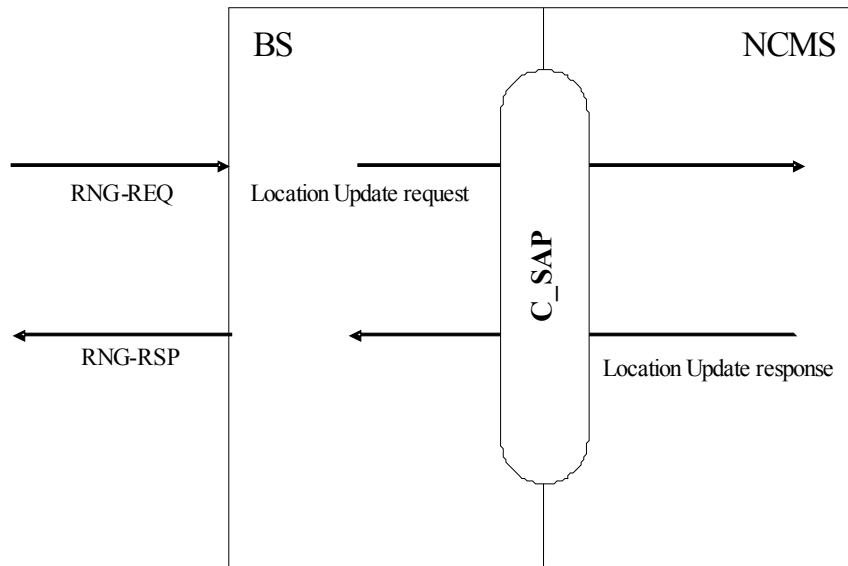


Fig. 2 - Location Update Primitives

14.5.9.3.2 Service Primitives for Location Update

14.5.9.3.2.1 Location Update request

14.5.9.3.2.1.1 Function

This primitive is issued by a BS to inform a management entity of Mobility Management Services in an NCMS that an MS requests to initiate Location Update.

14.5.9.3.2.1.2 Semantics of the service primitive

The parameters of the primitives are as follows:

Location Update request

(
 MS MAC Address
 BS ID
 Paging Controller ID
 Paging Group ID
 MAC Hash Skip Threshold
 Power Down Indicator
)

MS MAC Address

48-bit MAC address which will identify MS

BS ID

Identifier of serving BS

Paging Controller ID

The Paging Controller ID is a logical network identifier for the serving BS or other network entity retaining MS service and operational information and/or administering paging activity for the MS while in Idle Mode.

Paging Group ID

One or more logical affiliation groupings of BS

MAC Hash Skip Threshold

Maximum number of successive MOB_PAG-ADV messages that may be sent from a BS without individual notification for an MS, including MAC address hash of an MS for which Action Code is 00, 'No Action Required'.

Power Down Indicator

Indicates the MS is currently attempting to perform Location Update due to power down.

14.5.9.3.2.1.3 When generated

This primitive is generated when the BS receives RNG-REQ message with Paging Controller ID and Ranging Purpose Indication with bit #1 set to 1, MAC Hash Skip Threshold, or Power Down Indicator.

14.5.9.3.2.1.4 Effect of receipt

This primitive shall be generated on BS side and a management entity of Mobility Management Services shall respond to this primitive by sending Location Update response.

14.5.9.3.2.2 Location Update response**14.5.9.3.2.2.1 Function**

This primitive is issued by the NCMS to respond to Location Update request from the BS

14.5.9.3.2.2.2 Semantics of the service primitive

The parameters of the primitives are as follows:

Location Update response

```
(
    MS MAC Address
    Location Update Result
    Paging Information
    Paging Controller ID
    MAC Hash Skip Threshold
    Power Down Response
)
```

MS MAC Address

48-bit MAC address which will identify MS

Location Update Result

Response to Location Update Request:

0b00=Failure of Idle Mode Location Update. The MS shall perform Network Re-entry from Idle Mode

0b01=Success of Idle Mode Location Update

0b10, 0b11: Reserved

Paging Information

New Paging Information assigned to MS. Paging Information shall only be included if Location Update Response=0x01 and if Paging Information has changed. The Paging Information TLV defines the Paging Group ID, PAGING_CYCLE and PAGING_OFFSET

parameters to be used by the MS in IDLE mode. PAGING_CYCLE is the cycle in which the paging message is transmitted within the paging group. PAGING_OFFSET determines the frame within the cycle in which the paging message is transmitted and it must be smaller than PAGING_CYCLE value. Paging Group ID specifies the paging group the MS is assigned to.

Paging Controller ID

Paging Controller ID is a logical network identifier for the serving BS or other network entity retaining MS service and operational information and/or administering paging activity for the MS while in Idle Mode. Paging Controller ID shall only be included if Location Update Response=0x01 and if Paging Controller ID has changed.

MAC Hash Skip Threshold

Maximum number of successive MOB_PAG-ADV messages that may be sent from a BS without individual notification for an MS, including MAC address hash of an MS for which Action Code for the MS is 00,'No Action Required'. If BS does not include this TLV item in the RNG-RSP message, any BS may omit MAC Address Hash of the MS with Action Code 00,'No Action Required' from any MOB_PAG-ADV message.

Power Down Response

Indicates the MS's Power Down Location Update result.

0x00= Failure of Power Down Information Update.

0x01= Success of Power Down Information Update.

14.5.9.3.2.2.3 When generated

This primitive is generated at an NCMS in order to request a BS to issue a RNG-RSP message.

14.5.9.3.2.2.4 Effect of receipt

A BS receiving Location Update response shall transmit RNG-RSP message with the appropriate parameters settings.

References

[1] IEEE 802.16e/D9

[2] IEEE 802.16g-04/03r3, "Baseline Document – P802.16g Management Plane Procedures and Services"

[3] IEEE Std 802-16-2004