
Project	IEEE 802.16 Broadband Wireless Access Working Group < http://ieee802.org/16 >	
Title	Clarify the EAP based Authentication Procedure	
Date Submitted	2006-03-07	
Source(s)	Cancan Huang	chuang@ztesandiego.com
	Hong Chen	
	Jeff Qian	
	Mary Chion	
	Ling Xu	
	Sean Cai	
	ZTE	

Re:	Contribution on comments to P802.16g-D1	
Abstract	In this contribution, we clarify the EAP based authentication procedure in Figure 477	
Purpose	Adoption	

Notice	This document has been prepared to assist IEEE 802.16. It is offered as a basis for discussion and is not binding on the contributing individual(s) or organization(s). The material in this document is subject to change in form and content after further study. The contributor(s) reserve(s) the right to add, amend or withdraw material contained herein.
Release	The contributor grants a free, irrevocable license to the IEEE to incorporate text contained in this contribution, and any modifications thereof, in the creation of an IEEE Standards publication; to copyright in the IEEE's name any IEEE Standards publication even though it may include portions of this contribution; and at the IEEE's sole discretion to permit others to reproduce in whole or in part the resulting IEEE Standards publication. The contributor also acknowledges and accepts that this contribution may be made public by IEEE 802.16.
Patent Policy and Procedures	The contributor is familiar with the IEEE 802.16 Patent Policy and Procedures (Version 1.0) < http://ieee802.org/16/ipr/patents/policy.html >, including the statement "IEEE standards may include the known use of patent(s), including patent applications, if there is technical justification in the opinion of the standards-developing committee and provided the IEEE receives assurance from the patent holder that it will license applicants under reasonable terms and conditions for the purpose of implementing the standard."

Early disclosure to the Working Group of patent information that might be relevant to the standard is essential to reduce the possibility for delays in the development process and increase the likelihood that the draft publication will be approved for publication. Please notify the Chair <<mailto:r.b.marks@ieee.org>> as early as possible, in written or electronic form, of any patents (granted or under application) that may cover technology that is under consideration by or has been approved by IEEE 802.16. The Chair will disclose this notification via the IEEE 802.16 web site <<http://ieee802.org/16/ipr/patents/notices>>.

Clarification on EAP Based Authentication Procedure Diagram

Cancan Huang, Hong Chen, Mary Chion, Jeff Qian, Ling Xu, Sean Cai

1. Introduction

In Section 14.2.5.1 (EAP based authentication procedures), Figure 477, it is confused to use bi-direction arrow line to show interaction between 802.16 Entity and NCMS. It is hard to tell sequence of the call flow. Based on EAP specification, ~~the C_SM_REQ is sent from NCMS to 802.16 Entity. The 802.16 Entity will send C_SM_RSP in response to it. It is better to separate them by C_SM_NOTIFY~~, which will make the flow more accurate.

2. Proposed Solution

This contribution clarifies the primitive diagrams by ~~separating-changing~~ the C_SM_REQ/RSP primitive ~~into two unidirectional arrow line~~ C_SM_NOTIFY.

3. Detail Text Changes

[Modify section 14.2.5.1, replace Figure 477 with the following figures]

14.2.5.1 EAP based authentication procedure

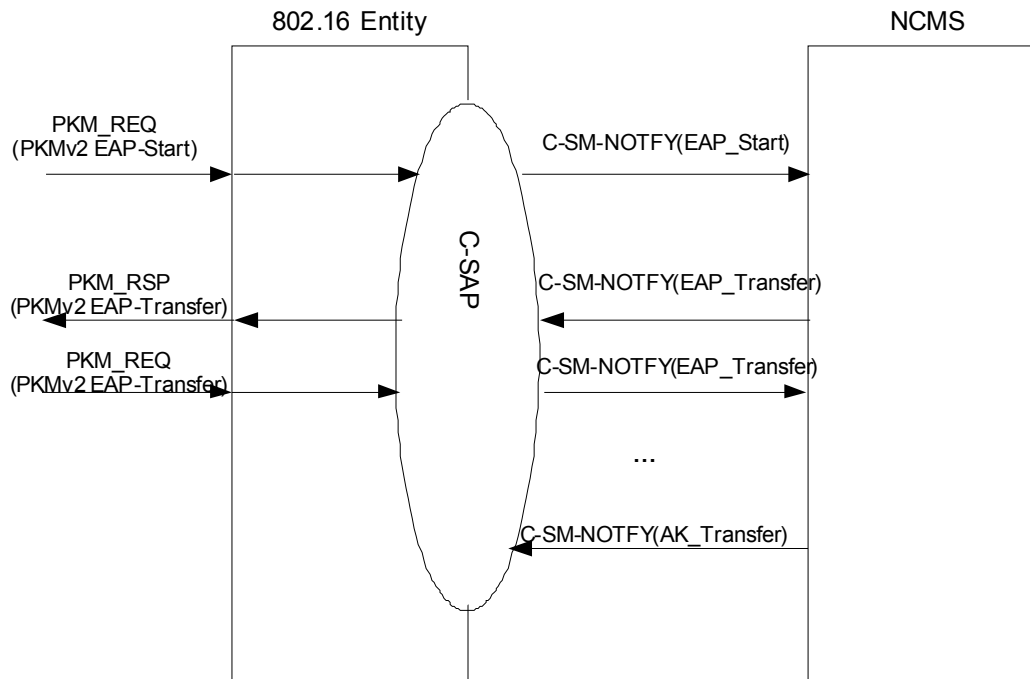


Figure 477 --- EAP based Authentication Procedure

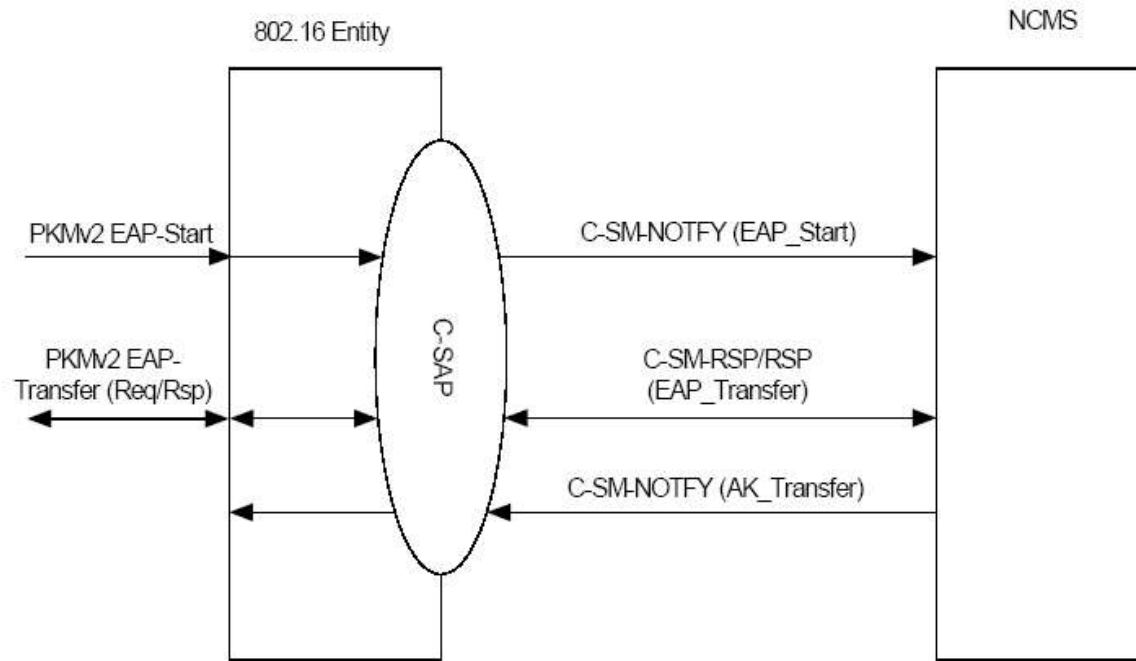


Figure 477—EAP based Authentication Procedure