

Project	<b>IEEE 802.16 Broadband Wireless Access Working Group</b> < <a href="http://ieee802.org/16">http://ieee802.org/16</a> >
Title	<b>Correction of Ranging Primitive Example</b>
Date Submitted	<b>2006-11-16</b>
Source(s)	Jaesun Cha and Chulsik Yoon <a href="mailto:jscha@etri.re.kr">jscha@etri.re.kr</a> ETRI 161 Gajeong-dong, Yuseong-gu Daejeon 305-700 Korea
Re:	Contribution on comments to IEEE 802.16g/D5
Abstract	Correction of ranging primitive example
Purpose	Adoption
Notice	This document has been prepared to assist IEEE 802.16. It is offered as a basis for discussion and is not binding on the contributing individual(s) or organization(s). The material in this document is subject to change in form and content after further study. The contributor(s) reserve(s) the right to add, amend or withdraw material contained herein.
Release	The contributor grants a free, irrevocable license to the IEEE to incorporate text contained in this contribution, and any modifications thereof, in the creation of an IEEE Standards publication; to copyright in the IEEE's name any IEEE Standards publication even though it may include portions of this contribution; and at the IEEE's sole discretion to permit others to reproduce in whole or in part the resulting IEEE Standards publication. The contributor also acknowledges and accepts that this contribution may be made public by IEEE 802.16.
Patent Policy and Procedures	The contributor is familiar with the IEEE 802.16 Patent Policy and Procedures (Version 1.0) < <a href="http://ieee802.org/16/ipr/patents/policy.html">http://ieee802.org/16/ipr/patents/policy.html</a> >, including the statement "IEEE standards may include the known use of patent(s), including patent applications, if there is technical justification in the opinion of the standards-developing committee and provided the IEEE receives assurance from the patent holder that it will license applicants under reasonable terms and conditions for the purpose of implementing the standard."  Early disclosure to the Working Group of patent information that might be relevant to the standard is essential to reduce the possibility for delays in the development process and increase the likelihood that the draft publication will be approved for publication. Please notify the Chair < <a href="mailto:r.b.marks@ieee.org">mailto:r.b.marks@ieee.org</a> > as early as possible, in written or electronic form, of any patents (granted or under application) that may cover technology that is under consideration by or has been approved by IEEE 802.16. The Chair will disclose this notification via the IEEE 802.16 web site < <a href="http://ieee802.org/16/ipr/patents/notices">http://ieee802.org/16/ipr/patents/notices</a> >.

## Proposed modifications to:

# Correction of Ranging Primitive Example

*Jaesun Cha and Chulsik Yoon, with Changes from Peretz*

*ETRI*

## 1. Motivation

Figure F9 shows how ranging primitives can be used when 802.16 device performs initial ranging. According to the Figure, NCMS at MS and BS participates in code-based ranging as well as message-based ranging procedure.

Because NCMS is a high-level logical entity and code-based ranging is a pure MAC-layer function, it is not a good approach for NCMS to participate in code-based ranging procedure. Only thing that NCMS needs to do is to trigger code-based ranging procedure.

In addition, NCMS doesn't need to manage parameters included in RNG-RSP sent to MS as a response to CDMA code for initial ranging because only BS can manage those parameters (timing off adjustment, frequency adjustment, power level adjustment, etc) related with air interface.

## 2. Proposed Text Changes

*[Modify F.4 Ranging Primitives Usage as follow]*

### **F.4 Ranging Primitives Usage**

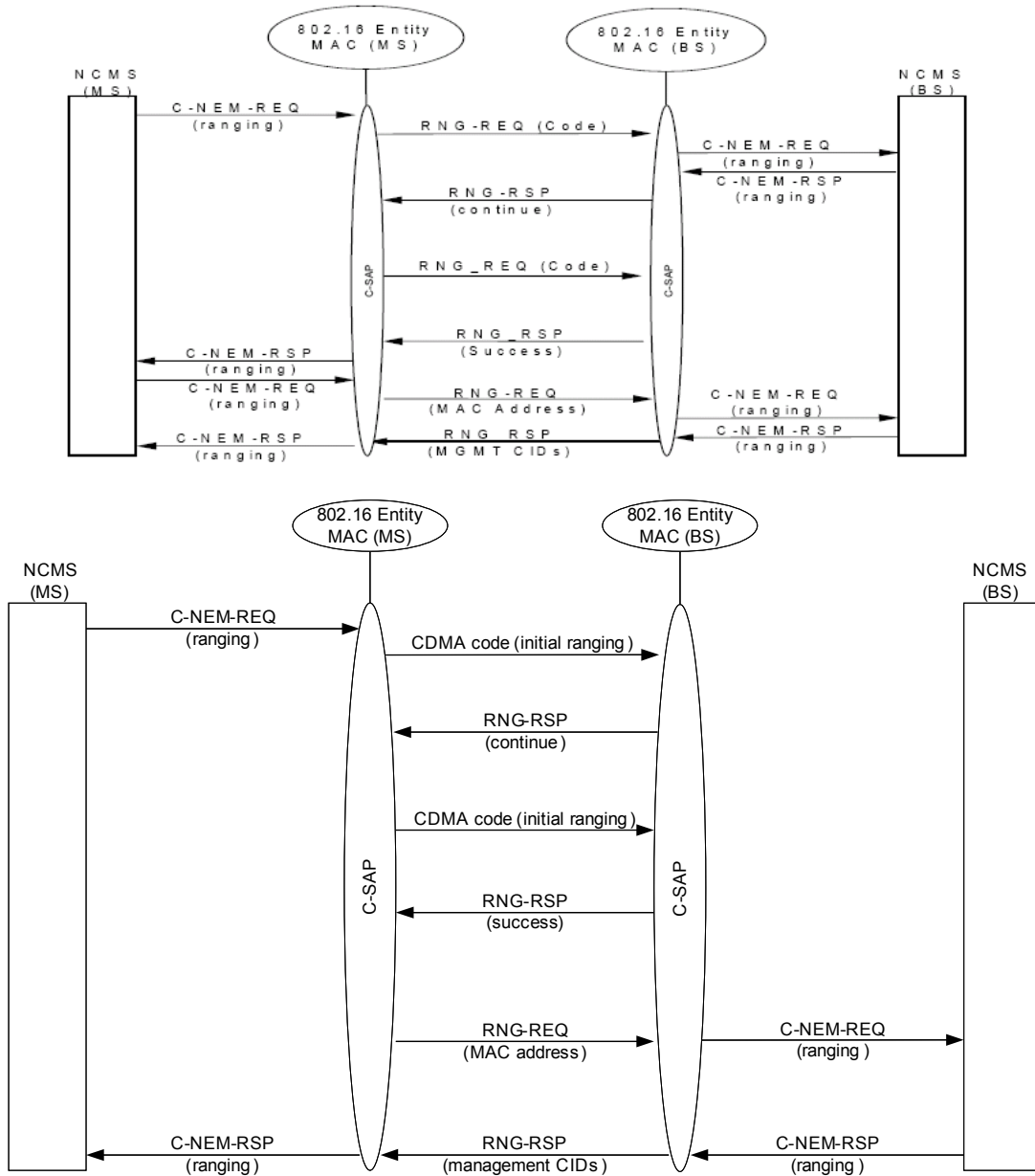
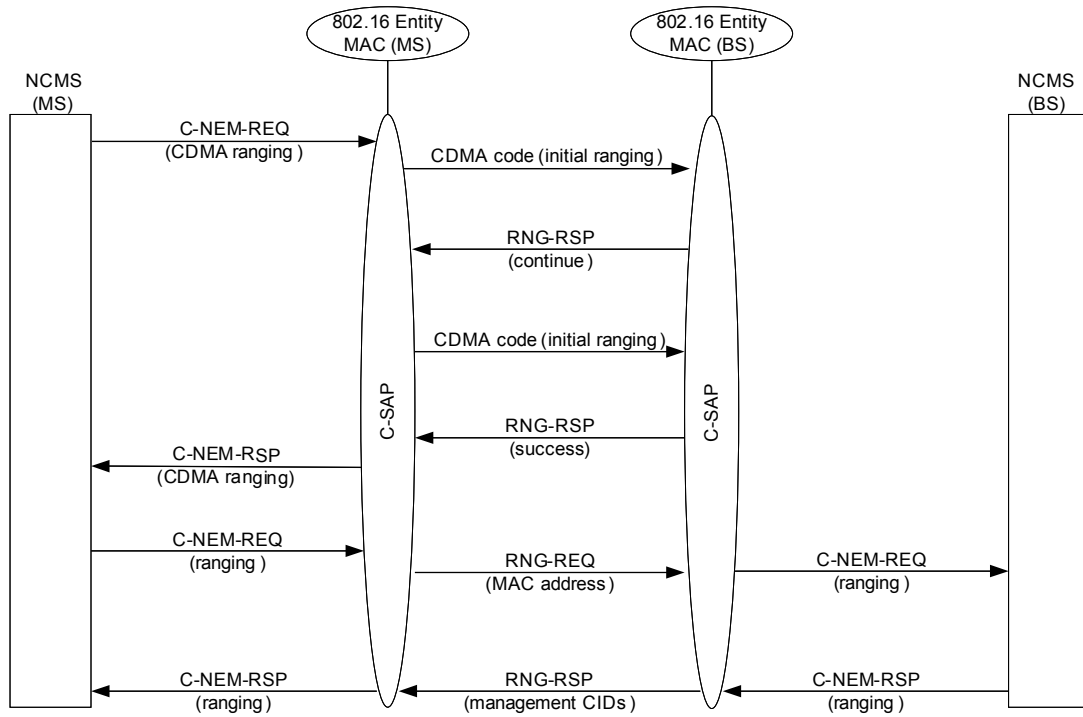


Figure F9 – The use of Ranging Primitives

Peretz's Comment: Suggest change to this Figure per the Figure below



Figure

F9 – The use of Ranging Primitives

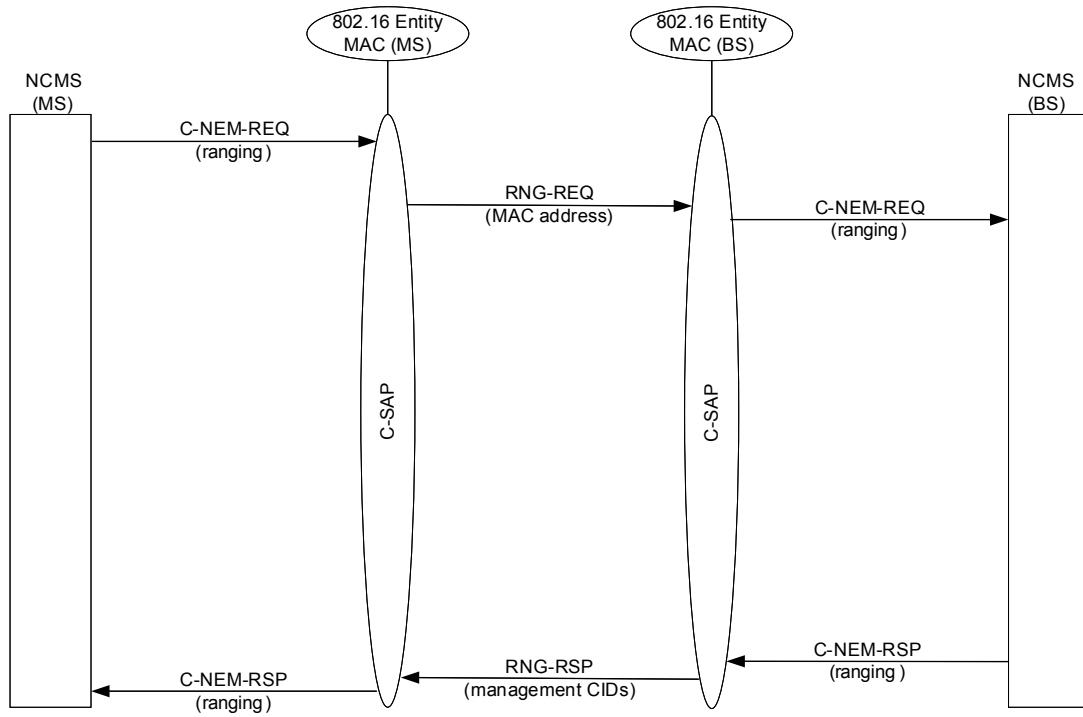


Figure F9a – The use of Fast Ranging Primitives