

1

2

Project	IEEE 802.16 Broadband Wireless Access Working Group < http://ieee802.org/16 >
Title	Figure Change
Date Submitted	2007-01-18
Source(s)	Peretz Feder, Honghai Zhang ALU pfeder@alcatel-lucent.com , hozhang@alcatel-lucent.com Pbarber@huawei.com
Re:	
Abstract	Additional Hand over primitives for Mobile Side
Purpose	Adoption
Notice	This document has been prepared to assist IEEE 802.16. It is offered as a basis for discussion and is not binding on the contributing individual(s) or organization(s). The material in this document is subject to change in form and content after further study. The contributor(s) reserve(s) the right to add, amend or withdraw material contained herein.
Release	The contributor grants a free, irrevocable license to the IEEE to incorporate material contained in this contribution, and any modifications thereof, in the creation of an IEEE Standards publication; to copyright in the IEEE's name any IEEE Standards publication even though it may include portions of this contribution; and at the IEEE's sole discretion to permit others to reproduce in whole or in part the resulting IEEE Standards publication. The contributor also acknowledges and accepts that this contribution may be made public by IEEE 802.16.
Patent Policy and Procedures	The contributor is familiar with the IEEE 802.16 Patent Policy and Procedures (Version 1.0) < http://ieee802.org/16/ipr/patents/policy.html >, including the statement "IEEE standards may include the known use of patent(s), including patent applications, if there is technical justification in the opinion of the standards-developing committee and provided the IEEE receives assurance from the patent holder that it will license applicants under reasonable terms and conditions for the purpose of implementing the standard." Early disclosure to the Working Group of patent information that might be relevant to the standard is essential to reduce the possibility for delays in the development process and increase the likelihood that the draft publication will be approved for publication. Please notify the Chair < mailto:r.b.marks@ieee.org > as early as possible, in written or electronic form, of any patents (granted or under application) that may cover technology that is under consideration by or has been approved by IEEE 802.16. The Chair will disclose this notification via the IEEE 802.16 web site < http://ieee802.org/16/ipr/patents/notices >.

1

2

Add an HO-Mobile Primitive

3

Peretz Feder - ALU

4

Honghai Zhang - ALU

5

Phil barber - Huawei

6 Abstract

7

8 The 802.16g draft is missing the trigger for Mobile Initiated Handover. When the NCMS
9 at the MS decides to initiate a handover (as opposed to HO-Start) with the Serving BS it
10 informs the 802.16 MS entity to send a MOB_MSHO-REQ listing the candidate BS for
11 an upcoming HO-Start or HO-Cancel.

12 [Modify text as:]

13 14.2.5.2.1 C-HO-REQ

14 This primitive is used by an 802.16 entity or NCMS to trigger a handover procedure. The Action Type
15 included in this primitive defines the type of handover procedure to be performed. The possible Action Types for
16 this primitive are listed in Table below:

Action Type	Description
HO-Serving	Handover procedure between current serving BS and NCMS.
HO-Target	Handover procedure between target BS and NCMS
HO-Scan	Neighbor BS scanning procedure
<u>HO-Mobile</u>	<u>Handover procedure between Mobile Station and NCMS</u>

17

18 [Insert new subsection as:]

19 14.2.5.2.1.4 C-HO-REQ (Action Type==HO-Mobile)

20 Function:

21 This primitive is used by the MS or the Mobility Management Services entity in the NCMS at the MS side to
22 indicate the initiation of the HO process. In case of SHO/FBSS, it can be used to update Anchor BS or to add a
23 new Active BS to the current Active set. The NCMS in the MS can use this primitive to inform the 802.16 MS
24 entity to initiate the HO process and inform the serving BS of all the candidate BSs for HO as seen by the MS.

25 Semantics of the service primitive:

26 The following parameters are included in this primitive.

27

C-HO-REQ

```

1      (
2      Operation_Type(Action),
3      Action_Type(HO-MobileInitiate),
4      Destination(MS_or_NCMS),
5      Attribute_list:
6          Serving_BSID,
7          MS_MAC_Address,
8          HO_Type,
9          Mode,
10         Number_of_candidate_target_BSSs,
11         List_of_candidate_target_BSSs,
12     )

```

13

14 **Serving BSID**

15 Base station unique identifier (same number as that broadcasted on the DL-MAP
16 message).

17 **MS MAC Address**

18 48-bit unique identifier used by MS

19 **HO Type**

20 Indication of HO types; HHO or SHO/FBSS

21 **Mode**

22 Various modes in Anchor BS update or Active Set Update

23 **Number of candidate target BSs**

24 Number of BSs which are recommended by the MS or BS as candidate target BSs. The
25 information of each recommended BS is included in the list of candidate target BSs.

26 **List of candidate target BSs**

27 This is the list of recommended target BSs by the Mobility Management Services entity.
28 The BSs in the list may be the candidate target BSs for HHO or an Anchor BS or Active
29 BSs for SHO/FBSS according to the value of HO type and Mode. MS Access
30 Information, Newly Allocation Information, and HO Quality Information can be included
31 in this list.

32

33 **When generated:**

34 NCMS to 802.16 MS entity:

35 This primitive is used by the Mobility Management Services entity in NCMS to inform the 802.16 MS
36 entity to initiate a handover.

37 802.16 MS entity to NCMS:

38 This primitive is used when the MS receives the MOB_BSHO-REQ from the BS.

39

40 **Effect of receipt:**

41 802.16 MS entity:

42 The MS generates MOB_MSHO-REQ MAC message to the serving BS providing it with all the
43 candidate BSs.

44 NCMS:

45 The NCMS may instruct the MS to start the actual handover procedure (i.e., sending MOB_HO_IND).

46

47 [Modify text as:]

48 **14.2.5.2.2 C-HO-RSP**

1 This primitive is used by a 802.16 entity or NCMS to respond a handover request. The Action Type included in
 2 this primitive defines the type of handover procedure to be performed. The possible Action Types for this
 3 primitive are listed in Table below:

Action Type	Description
HO-Serving	Handover procedure between current serving BS and NCMS.
HO-Target	Handover procedure between target BS and NCMS
HO-Scan	Neighbor BS scanning procedure
<u>HO-Mobile</u>	<u>Handover procedure between Mobile Station and NCMS</u>

4 -

5 [Insert new subsection as:]

6 **14.2.5.2.1.5 C-HO-RSP (Action_Type==HO-Mobile)**

7 **Function:**

8 This primitive is used by the MS to inform the Mobility Management Services entity in the NCMS MS about the
 9 arrival of a MOB-BSHO_RSP MAC message in response to the previously generated MOB_MSHO-REQ
 10 message and the pruned down list of the candidate BSs selected by the Mobility Management in the NCMS for
 11 the upcoming actual HO phase.

12 **Semantics of the service primitive:**

13 The following parameters are included in this primitive.

- 14 **C-HO-REQ**
- 15 (
- 16 Operation_Type(Action)
- 17 Action_Type(HO-Mobile),
- 18 Destination(NCMS),
- 19 Attribute_list:
- 20 Serving BSID,
- 21 MS MAC Address,
- 22 HO Type,
- 23 Mode,
- 24 Number of candidate target BSs,
- 25 List of candidate target BSs,
- 26)
- 27
- 28 **Serving BSID**
- 29 Base station unique identifier (same number as that broadcasted on the DL-MAP
- 30 message).
- 31 **MS MAC Address**
- 32 48-bit unique identifier used by MS
- 33 **HO Type**
- 34 Indication of HO types; HHO or SHO/FBSS
- 35 **Mode**
- 36 Various modes in Anchor BS update or Active Set Update
- 37 **Number of candidate target BSs**

1 Number of BSs which are recommended by the MS or BS as candidate target BSs. The
2 information of each recommended BS is included in the list of candidate target BSs.

3 **List of candidate target BSs**

4 This is the list of recommended target BSs that is pruned down by the serving BS. The
5 BSs in the list may be the candidate target BSs for HHO or an Anchor BS or Active BSs
6 for SHO/FBSS according to the value of HO type and Mode. MS Access Information,
7 Newly Allocation Information, and HO Quality Information can be included in this list.
8

9 **When generated:**

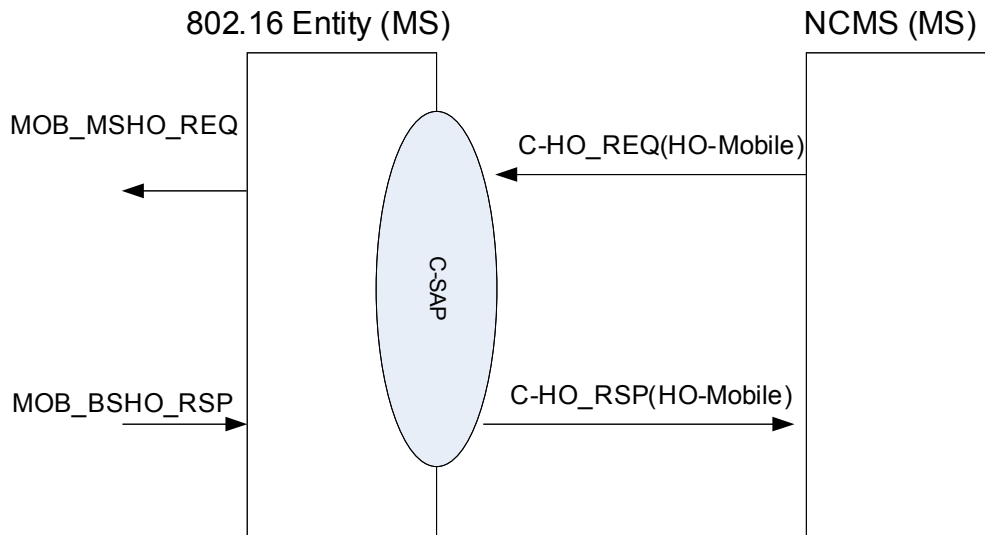
10 802.16 MS entity to NCMS:

11 This primitive is used by the 802.16 MS entity to inform the Mobility Management Services entity
12 about the arrival of a response to the previously generated C-HO_Req (HO-MobileInitiate) primitive.
13

14 **Effect of receipt:**

15 NCMS at the MS:

16 The NCMS learns about the pruned down list of the potential candidates BS to select as the final
17 candidate.
18
19
20



21
22

23
24

Figure xxx – Primitive flow between NCMS at the MS and the MS when HO is initiated