

Project	IEEE 802.16 Broadband Wireless Access Working Group < http://ieee802.org/16 >
Title	Proposed text to Subclause 1.3 Reference Models
Date Submitted	2007-05-02
Source(s)	Joey Chou Intel Corporation [mailto:joey.chou@intel.com]
Re:	
Abstract	This contribution proposes the text to subclause 1.3 Reference Models.
Purpose	Adoption
Notice	This document has been prepared to assist IEEE 802.16. It is offered as a basis for discussion and is not binding on the contributing individual(s) or organization(s). The material in this document is subject to change in form and content after further study. The contributor(s) reserve(s) the right to add, amend or withdraw material contained herein.
Release	The contributor grants a free, irrevocable license to the IEEE to incorporate material contained in this contribution, and any modifications thereof, in the creation of an IEEE Standards publication; to copyright in the IEEE's name any IEEE Standards publication even though it may include portions of this contribution; and at the IEEE's sole discretion to permit others to reproduce in whole or in part the resulting IEEE Standards publication. The contributor also acknowledges and accepts that this contribution may be made public by IEEE 802.16.
Patent Policy and Procedures	<p>The contributor is familiar with the IEEE 802.16 Patent Policy and Procedures (Version 1.0) <http://ieee802.org/16/ipr/patents/policy.html>, including the statement "IEEE standards may include the known use of patent(s), including patent applications, if there is technical justification in the opinion of the standards-developing committee and provided the IEEE receives assurance from the patent holder that it will license applicants under reasonable terms and conditions for the purpose of implementing the standard."</p> <p>Early disclosure to the Working Group of patent information that might be relevant to the standard is essential to reduce the possibility for delays in the development process and increase the likelihood that the draft publication will be approved for publication. Please notify the Chair <mailto:r.b.marks@ieee.org> as early as possible, in written or electronic form, of any patents (granted or under application) that may cover technology that is under consideration by or has been approved by IEEE 802.16. The Chair will disclose this notification via the IEEE 802.16 web site <http://ieee802.org/16/ipr/patents/notices>.</p>

Table of Content

1. Introduction..... 3

2. Reference Model Proposal..... 3

3. New Acronyms..... 4

¶

1

2. Introduction

2

3 This contribution proposes the contribution proposes the text to subclause 1.3 Reference Models.

2. Reference Model Proposal

4

5 *[Add Subclause 1.3 as shown below:]*

6

1.3 Reference Models

7

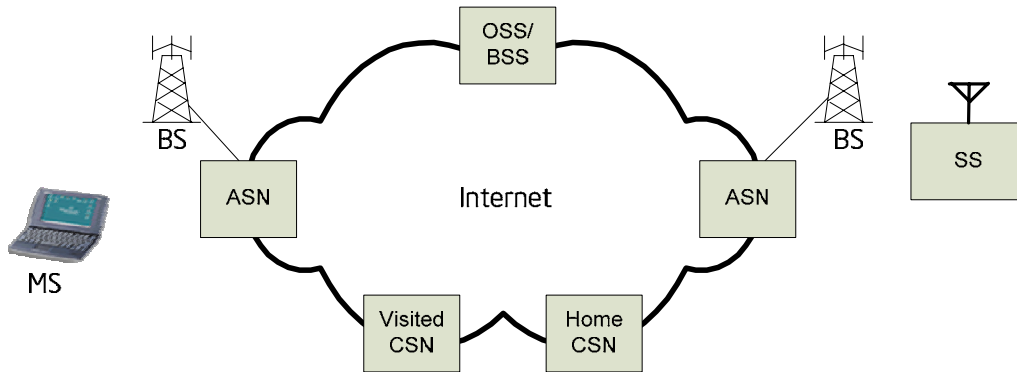
8 *[Replace Subclause 1.3 with the following:]*

9

10 Figure 1 shows the network reference model for both fixed and mobile Broadband Wireless Access
11 (BWA) networks that consists of OSS/BSS (Operation Support System / Business Support System) and
12 the following network elements:

- 13 • MS (Mobile Station)
- 14 • SS (Subscriber Station)
- 15 • BS (Base Station)
- 16 • ASN (Access Service Network)
- 17 • CSN (Connectivity Service Network)

18



19

20 **Figure 1: BWA Network Reference Model**

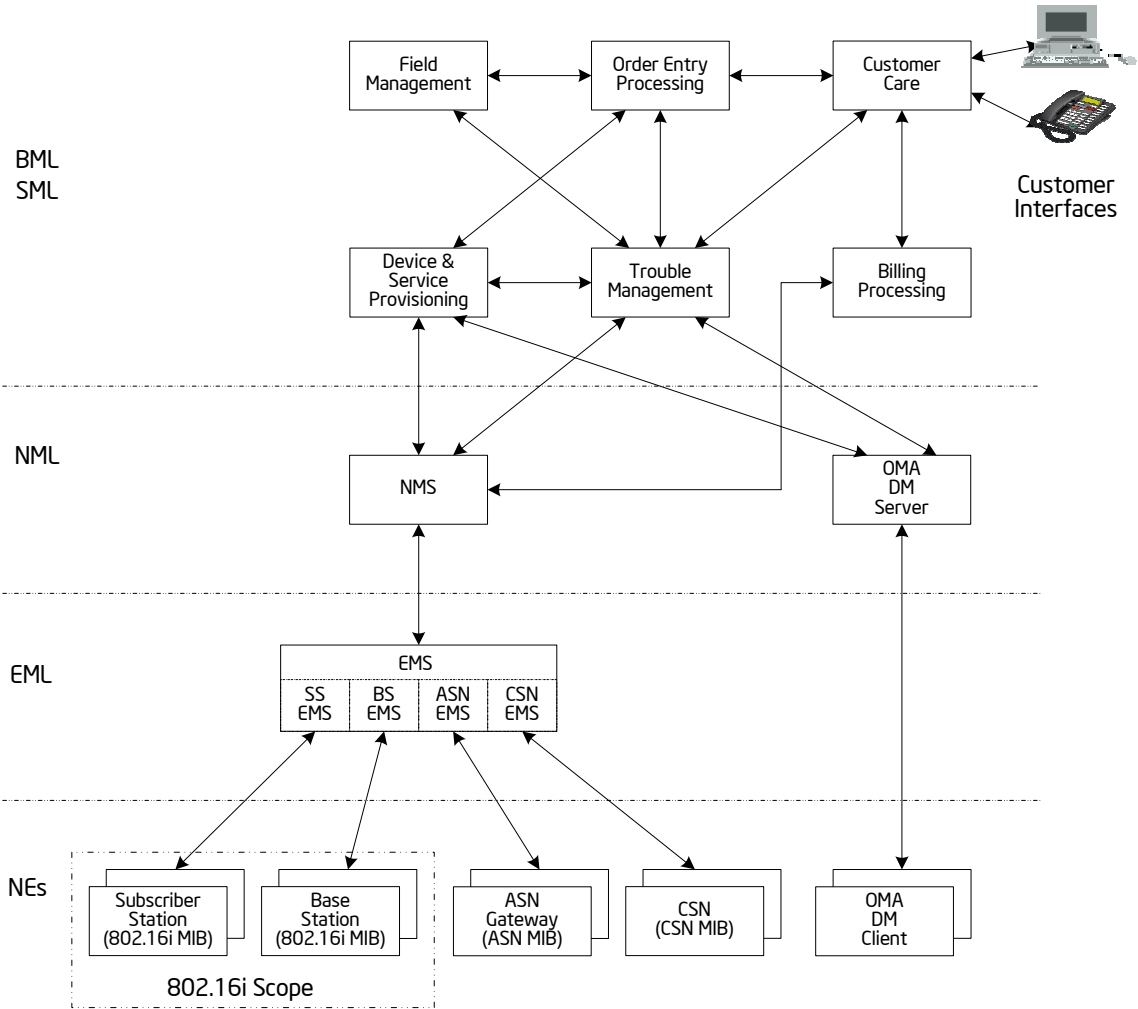
21

22 OSS/BSS manages BS, ASN, CSN via the standard IP networks. Internet. For managed SS, OSS/BSS can
23 send the management information over the secondary management connection between BS and SS.

24

25 A TMN (Telecommunications Management Network) model has been proposed by the ITU and
26 TeleManagement Forum (TMF) to structure OSS/BSS management functions and define interfaces
27 between the functional entities. Figure 2 illustrates the BWA OSS/BSS reference model that describes
28 how IEEE 802.16i MIB is to interface with other management entities in order to support BWA business
29 development and operation.

29



1
2

Figure 2: BWA OSS/BSS Reference Model

3
4

3. New Acronyms

5

4. Abbreviations and Acronyms

6
7

[Insert the following acronyms:]

8
9

- 10 OSS Operation Support System
- 11 BSS Business Support System
- 12 ASN Access Service Network
- 13 CSN Connectivity Service Network

14
15

