

Project	<b>IEEE 802.16 Broadband Wireless Access Working Group</b> < <a href="http://ieee802.org/16">http://ieee802.org/16</a> >	
Title	<b>Obtaining Sleep Mode Information in RS</b>	
Date Submitted	<b>2006-11-15</b>	
Source(s)	<p>Yuefeng Zhou; Mike Hart; Sunil Vadgama Fujitsu Laboratories of Europe Ltd Hayes Park Central, Hayes End Road, Hayes, Middlesex, UB4 8FE, UK</p> <p>Shiao-Li Tsao, Fang-Ching Ren, Wern-Ho Sheen, I-Kang Fu National Chiao Tung University (NCTU) /Industrial Technology Research Institute (ITRI), Taiwan No. 195, Sec. 4, Chung Hsing Rd., Chutung, Hsinchu, Taiwan 310, R.O.C.</p>	<p>Voice: +44 (0) 20 8573 4444 FAX: +44 (0) 20 8606 4539 <a href="mailto:yuefeng.zhou@uk.fujitsu.com">yuefeng.zhou@uk.fujitsu.com</a> <a href="mailto:mike.hart@uk.fujitsu.com">mike.hart@uk.fujitsu.com</a> <a href="mailto:sunil.vadgama@uk.fujitsu.com">sunil.vadgama@uk.fujitsu.com</a></p> <p>Voice: +886-3-5712121-54717 Fax: +886-3-5721490 E-mail: <a href="mailto:sltsao@cs.nctu.edu.tw">sltsao@cs.nctu.edu.tw</a>;<a href="mailto:frank_ren@itri.org.tw">frank_ren@itri.org.tw</a></p>
Re:	IEEE 802.16j-06/027: "Call for Technical Proposals regarding IEEE Project P802.16j"	
Abstract	In MR networks, RS could have more flexibility for scheduling, if it can obtain sleep mode information.	
Purpose	Discuss and adopt proposed text.	
Notice	This document has been prepared to assist IEEE 802.16. It is offered as a basis for discussion and is not binding on the contributing individual(s) or organization(s). The material in this document is subject to change in form and content after further study. The contributor(s) reserve(s) the right to add, amend or withdraw material contained herein.	
Release	The contributor grants a free, irrevocable license to the IEEE to incorporate material contained in this contribution, and any modifications thereof, in the creation of an IEEE Standards publication; to copyright in the IEEE's name any IEEE Standards publication even though it may include portions of this contribution; and at the IEEE's sole discretion to permit others to reproduce in whole or in part the resulting IEEE Standards publication. The contributor also acknowledges and accepts that this contribution may be made public by IEEE 802.16.	

---

Patent Policy and Procedures	<p>The contributor is familiar with the IEEE 802.16 Patent Policy and Procedures &lt;<a href="http://ieee802.org/16/ipr/patents/policy.html">http://ieee802.org/16/ipr/patents/policy.html</a>&gt;, including the statement "IEEE standards may include the known use of patent(s), including patent applications, provided the IEEE receives assurance from the patent holder or applicant with respect to patents essential for compliance with both mandatory and optional portions of the standard." Early disclosure to the Working Group of patent information that might be relevant to the standard is essential to reduce the possibility for delays in the development process and increase the likelihood that the draft publication will be approved for publication. Please notify the Chair &lt;<a href="mailto:chair@wirelessman.org">mailto:chair@wirelessman.org</a>&gt; as early as possible, in written or electronic form, if patented technology (or technology under patent application) might be incorporated into a draft standard being developed within the IEEE 802.16 Working Group. The Chair will disclose this notification via the IEEE 802.16 web site &lt;<a href="http://ieee802.org/16/ipr/patents/notices">http://ieee802.org/16/ipr/patents/notices</a>&gt;.</p>
------------------------------------	--

---

# Obtaining Sleep Mode Information in RS

*Yuefeng Zhou, Mike Hart, Sunil vadgama*

## 1. Problem Statement

In WiMAX MR networks, MS in sleep mode may maintain triggers to perform event-based actions, such as sending MOB\_SCN-REP, MOB\_MSHO-REQ, and MOB\_SCN-REQ messages to MR-BS. MS may include Enabled-Action-Triggered TLV in RNG-REQ or MOB\_SLP-REQ message requesting to associate specific actions with certain triggers. In response to the RNG-REQ or MOB\_SLP-REQ message, MR-BS shall transmit RNG-RSP or MOB\_SLP-RSP message including Enabled-Action-Triggered TLV provided that it allows to activate the requested type of Power Saving Class. After receiving RNG-RSP or MOB\_SLP-RSP message including the Enabled-Action-Triggered TLV, MS in sleep mode shall perform the actions indicated in the Enabled-Action-Triggered TLV following function/action specified in DCD or MOB\_NBRADV message. Therefore, in distributed case, RS shall allocate resources to this sleep-mode MS to properly perform the event-based actions. However, if the RS does not decode MOB\_SLP-RSP messages, it may not allocate proper resources to MSs on time, thus the event-based actions may failed.

Moreover, if RS, in both distributed and centralized case, can know that an MS has switched to sleep mode by decoding the MOB\_SLP-RSP message, it shall avoid sending management message to this MS. Also, an RS, in distributed case, can cancel the bandwidth resources allocated to this MS during the sleep period, thus saving bandwidth.

On the other hand, in WiMAX MR Networks, the sleep mode would be managed by the MR-BS, even in distributed case. The MR-BS may buffer the traffic addressed to a sleep mode MS, thus saving buffering in RS.

## 2. Proposed Remedy

The sleep mode will be managed by MR-BS, which can buffer the traffic addressed to a sleep-mode MS, thus saving buffering in RS.

RS may have the capability to listen and decode the MOB\_SLP\_RSP message to obtain the sleep-mode information. For example, if the sleep mode is initialized by MS, as shown in Fig. 1, RS shall decode the MOB\_SLP\_RSP message sent by MR-BS to obtain enough timing information, thus it can allocate resources to MS on time for the event-based actions, also RS can avoid sending management messages to this MS, and can cancel the bandwidth allocated to MS during the sleep period.

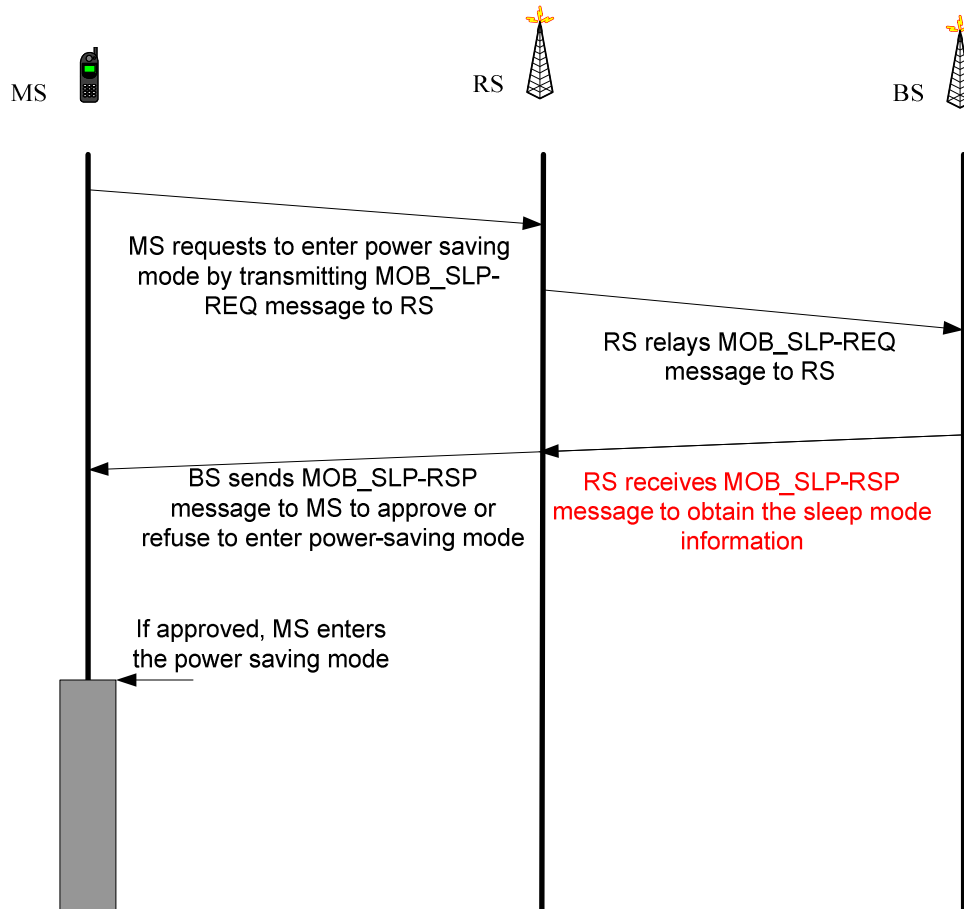


Fig. 1. RS decodes the MOB\_SLP\_RSP message for further scheduling

### 3. Specific Text Change

#### 6.3.21 Sleep mode for mobility-support MS

##### 6.3.21.1 Introduction

*[Insert two new paragraph after the last paragraph in 6.3.21.1]*

In MR networks, the sleep mode is managed by MR-BS. MR-BS shall buffer the traffic addressed to a sleep-mode MS, thus saving buffering in RS. RS shall know an MS being in sleep mode, thus it can avoid sending management message to the sleep-mode MS.

In distributed case, RS may decode the MOB\_SLP-RSP messages sent by MR-BS to obtain the timing and the event-based action information, thus RS can schedule proper radio resource to the MS in sleep mode to perform the event-based actions, and may cancel the bandwidth resources allocated to the sleep-mode MS during its sleep period.